



1-1/4" (32mm) DIAMETER WALL-MOUNTED GRAB BARS

INSTALLATION GUIDE:

1. Provide concealed anchor device or backing as specified or required in accordance with local building codes before wall is finished.
2. Pull snap flange covers (A-1) away from mounting flanges.
3. Use concealed mounting flange as a template to mark the locations of the mounting screw holes. (**Important note:** in order to ensure proper safety when in use, screws should be placed so that they are drilled into in-wall studs.) Remove grab bar and drill flange mounting holes in the marked areas.
4. Place the grab bar back on the wall, aligning the holes of the grab bar with the drilled holes on the wall.
5. Insert 1/4"-20 x 2" (M6.3-1 x 51mm) stainless steel screws into the drilled holes and tighten as much as necessary.
6. Place the snap flange covers back in place to cover the mounting holes and lock by turning the flange covers clockwise.

Note: Concealed mounting screws and anchor devices are not included with this grab bar. It is important to use the proper types of screws and supports necessary for your wall type. If you are unsure what type of support is necessary please consult a professional. **For your safety, proper in-wall support is imperative.**

STRAIGHT GRAB BARS - Dimensions (L)

12" = TBST-XXX-1030 (soft touch) / TBPC-101-1030 (stainless steel)
16" = TBST-XXX-1040 (soft touch) / TBPC-101-1040 (stainless steel)
20" = TBST-XXX-1050 (soft touch) / TBPC-101-1050 (stainless steel)
24" = TBST-XXX-1060 (soft touch) / TBPC-101-1060 (stainless steel)
36" = TBST-XXX-1290 (soft touch) / TBPC-101-1290 (stainless steel)
48" = TBST-XXX-1120 (soft touch) / TBPC-101-1120 (stainless steel)
60" = TBST-XXX-1150 (soft touch) / TBPC-101-1150 (stainless steel)

135 DEGREE GRAB BARS

TBST-XXX-1135 (soft touch)
TBPC-101-1135 (stainless steel)

90 DEGREE CORNER GRAB BARS

TBST-XXX-1090 (soft touch)
TBPC-101-1090 (stainless steel)

L-SHAPE GRAB BARS

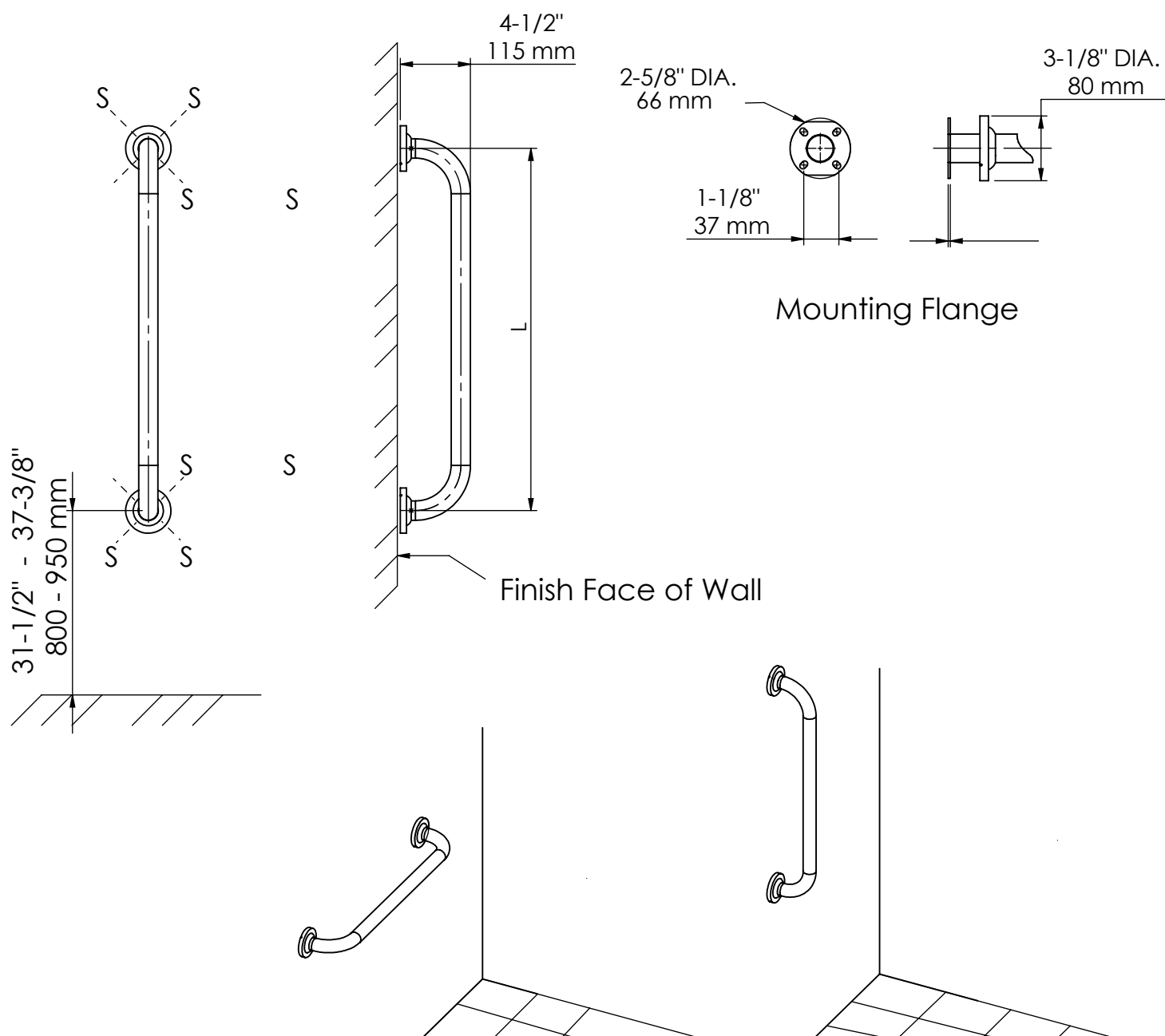
TBST-XXX-0090 (soft touch)
TBPC-101-0090 (stainless steel)



1-1/4" (32mm) DIAMETER STRAIGHT GRAB BAR

STRAIGHT GRAB BARS - Dimensions (L)

12" = TBST-XXX-1030 (soft touch) / TBPC-101-1030 (stainless steel)
16" = TBST-XXX-1040 (soft touch) / TBPC-101-1040 (stainless steel)
20" = TBST-XXX-1050 (soft touch) / TBPC-101-1050 (stainless steel)
24" = TBST-XXX-1060 (soft touch) / TBPC-101-1060 (stainless steel)
36" = TBST-XXX-1290 (soft touch) / TBPC-101-1290 (stainless steel)
48" = TBST-XXX-1120 (soft touch) / TBPC-101-1120 (stainless steel)
60" = TBST-XXX-1150 (soft touch) / TBPC-101-1150 (stainless steel)

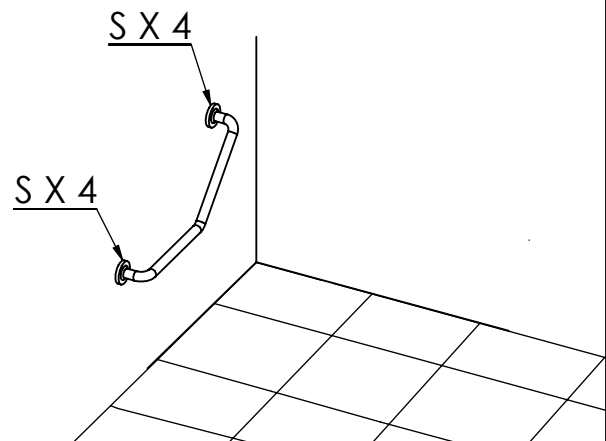
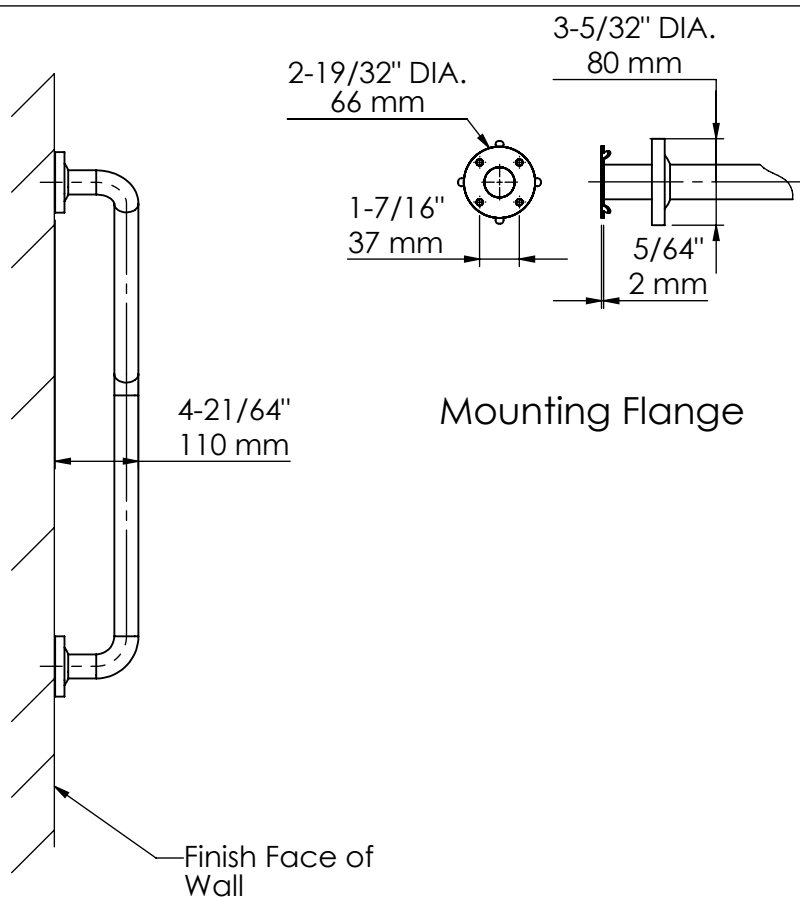
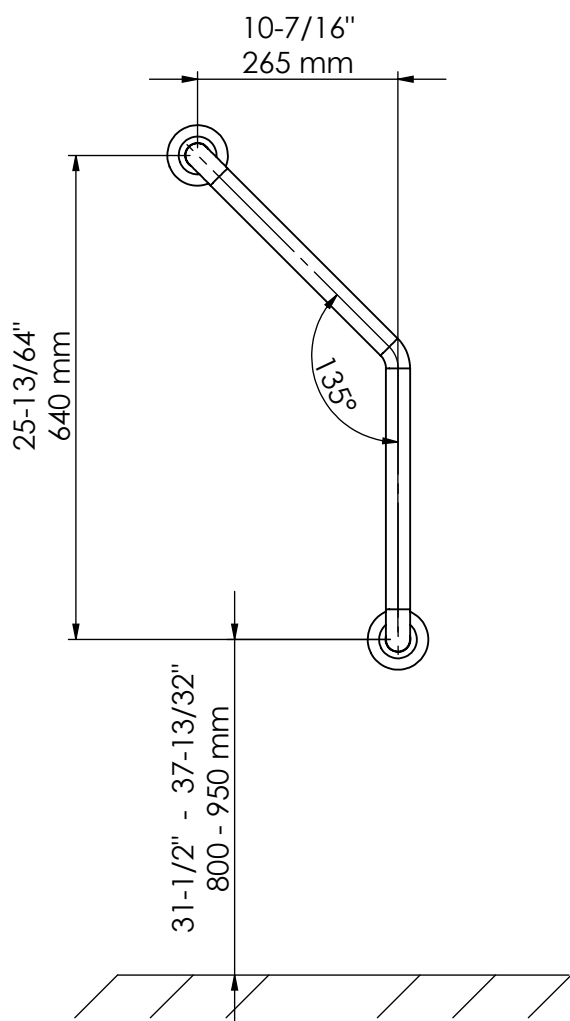


MATERIALS:

- Grab Bar - 18-8, Type 304, 15-gauge (5/8") stainless steel tubing with satin-finish. 1-1/4" (32mm) outside diameter. Tubing is tig argon welded to mounting flanges.
- Concealed Mounting Flanges - 18-8, Type 304, 3-1/8" (79mm) in diameter with 4 mounting holes for attachment to wall; welded to tubing.
- Snap Flange Covers - 18-8, Type 304, 22-gauge (3/4") drawn stainless steel with satin-finish. 3-1/4" (81mm) diameter x 3/8" (10mm) deep. Each cover snaps over mounting flange to conceal mounting screws



1-1/4" (32mm) DIAMETER 25-13/64" (640mm) 135-DEGREE ANGLE GRAB BAR

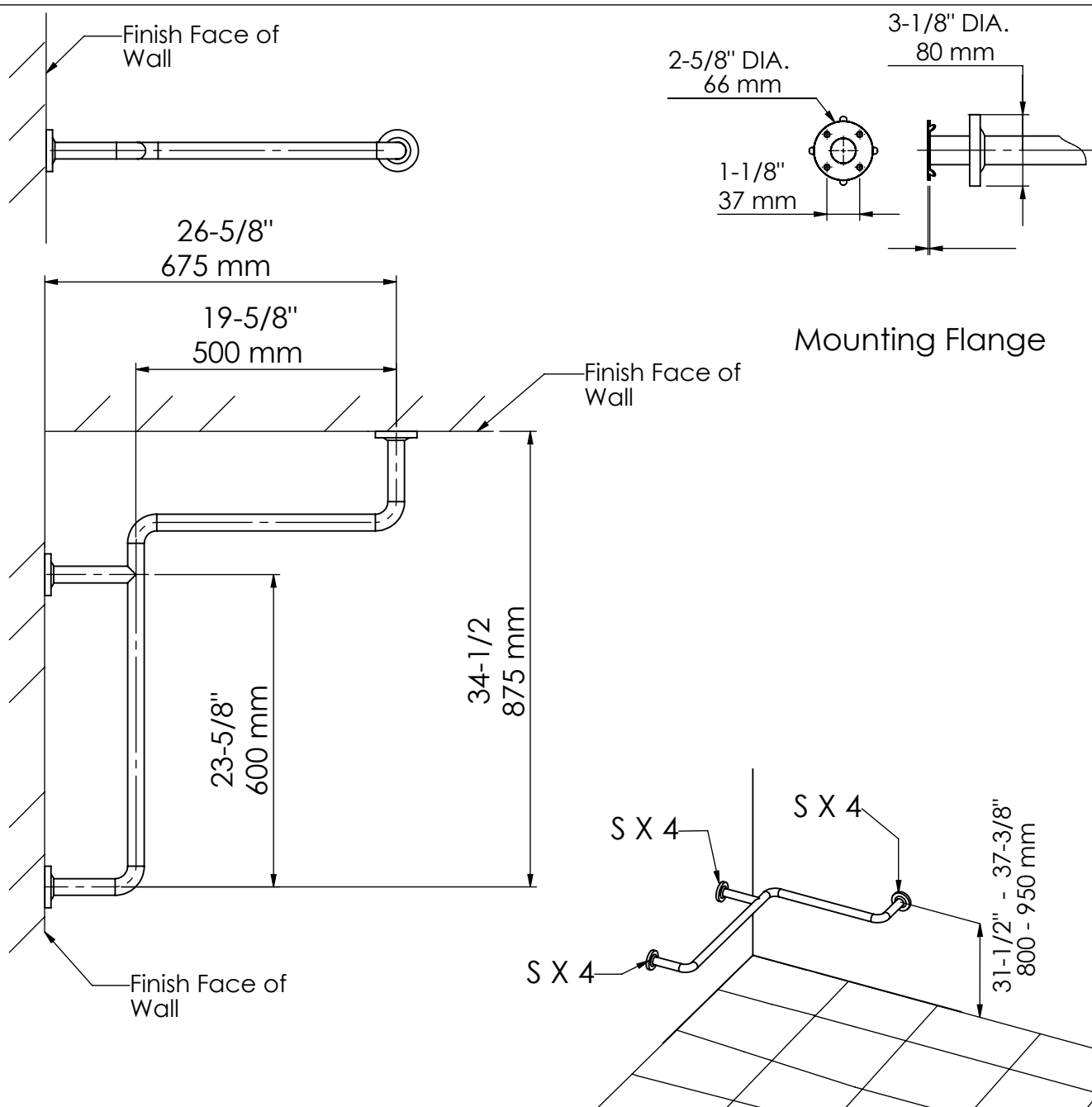


MATERIALS:

- Grab Bar - 18-8, Type 304, 15-gauge (1.5 mm) stainless steel tubing with satin-finish. 1-1/4" (32mm) outside diameter. Tubing is tig argon welded to mounting flanges.
- Concealed Mounting Flanges - 18-8, Type 304, 3-1/8" (79mm) in diameter with 4 mounting holes for attachment to wall; welded to tubing.
- Snap Flange Covers - 18-8, Type 304, 22-gauge (0.8mm) drawn stainless steel with satin-finish. 3-3/16" (81mm) diameter x 13/32" (10mm) deep. Each cover snaps over mounting flange to conceal mounting screws.



1-1/4" (32mm) DIAMETER 23 5/8"
19 5/8" (600 x 500mm)
90-DEGREE TWO-WALL
TUB / SHOWER / TOILET
COMPARTMENT BAR

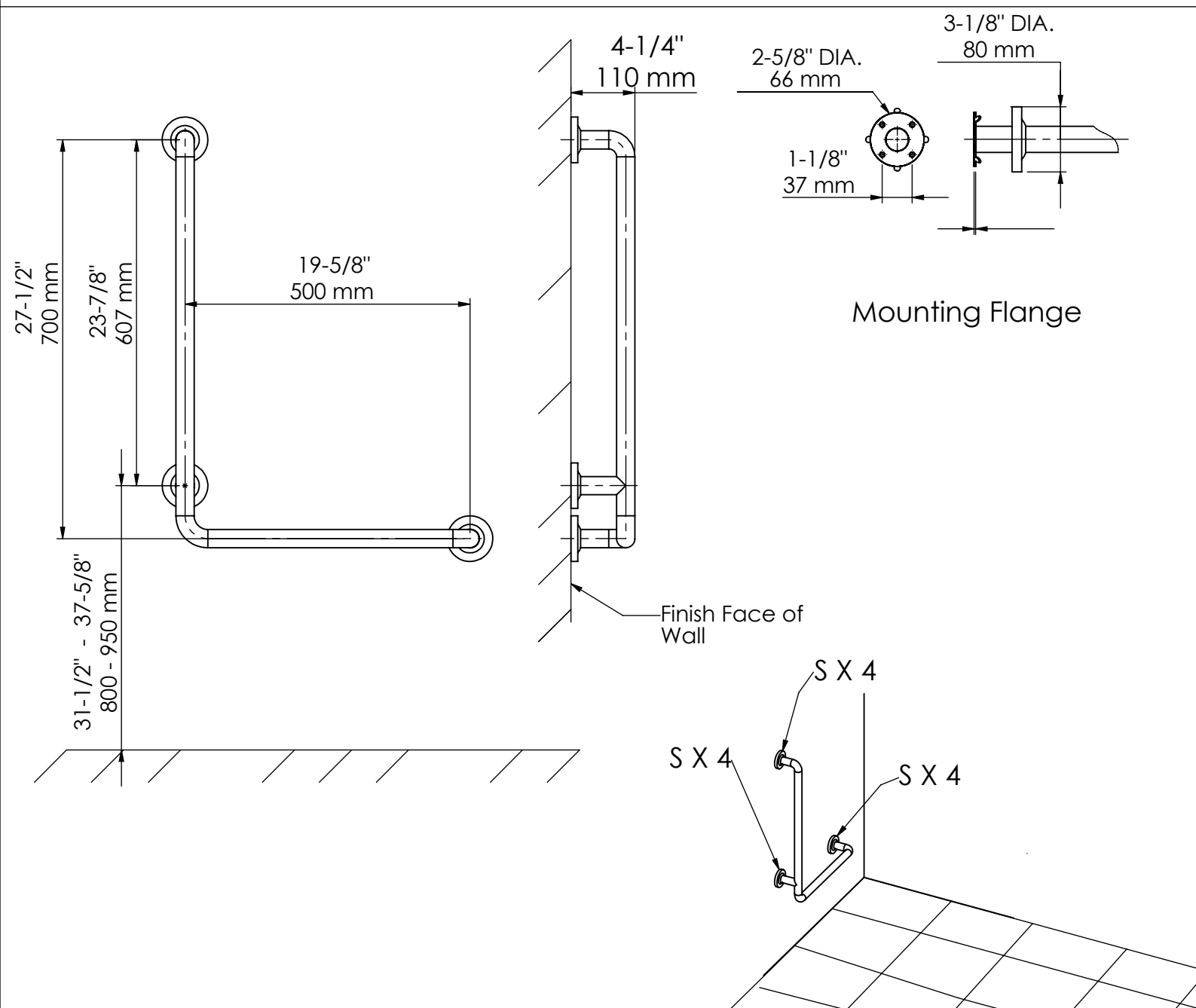


MATERIALS:

- Grab Bar - 18-8, Type 304, 15-gauge (5/8") stainless steel tubing with satin-finish. 1-1/4" (32mm) outside diameter. Tubing is tig argon welded to mounting flanges.
- Concealed Mounting Flanges - 18-8, Type 304, 3-1/8" (79mm) in diameter with 4 mounting holes for attachment to wall; welded to tubing.
- Snap Flange Covers - 18-8, Type 304, 22-gauge (3/4") drawn stainless steel with satin-finish. 3-1/4" (81mm) diameter x 3/8" (10mm) deep. Each cover snaps over mounting flange to conceal mounting screws.



**1-1/4" (32mm) DIAMETER
27-1/2" x 19-5/8" (700 x
500mm) 90-DEGREE GRAB
BAR**

**MATERIALS:**

- Grab Bar - 18-8, Type 304, 15-gauge (5/8") stainless steel tubing with satin-finish. 1-1/4" (32mm) outside diameter. Tubing is tig argon welded to mounting flanges.
- Concealed Mounting Flanges - 18-8, Type 304, 3-1/8" (79mm) in diameter with 4 mounting holes for attachment to wall; welded to tubing.
- Snap Flange Covers - 18-8, Type 304, 22-gauge (0.8mm) drawn stainless steel with satin-finish. 3-1/4" (81mm) diameter x 1-3/8" (10mm) deep. Each cover snaps over mounting flange to conceal mounting screws.