

Minoan Triple Function Antique Bathroom Sink Faucet

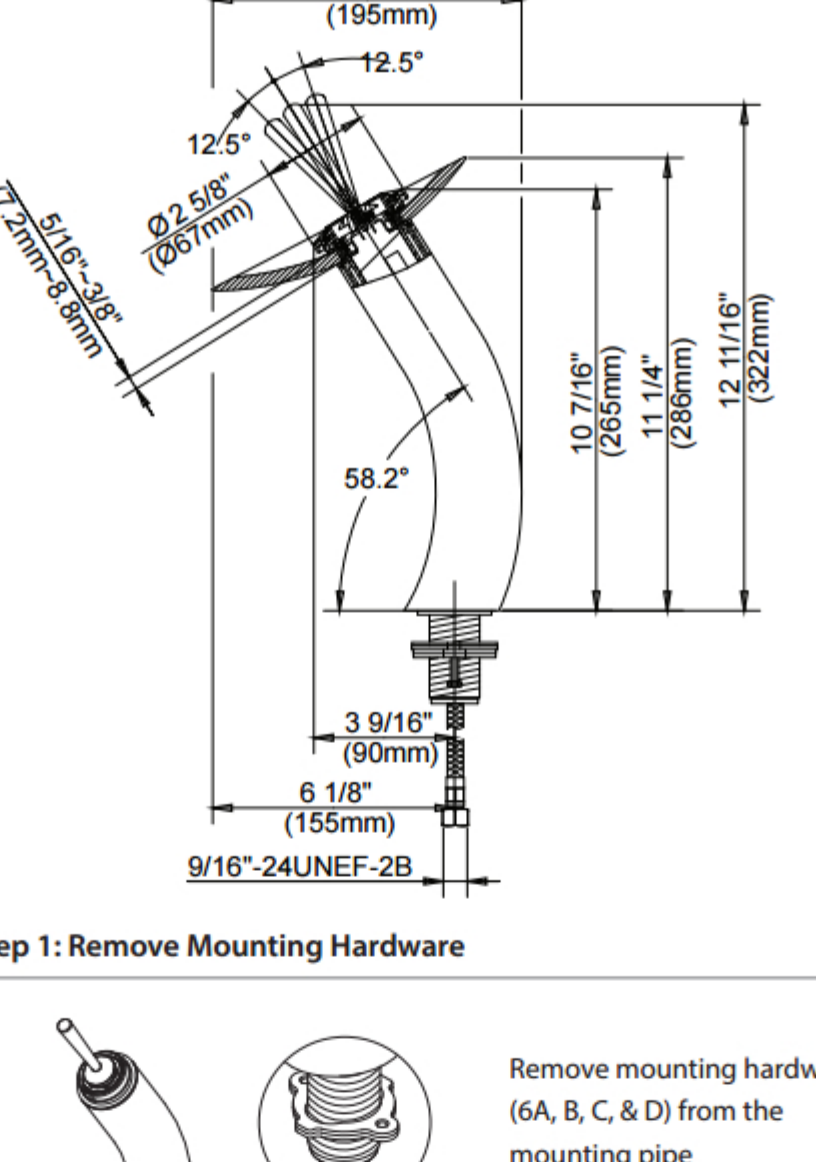
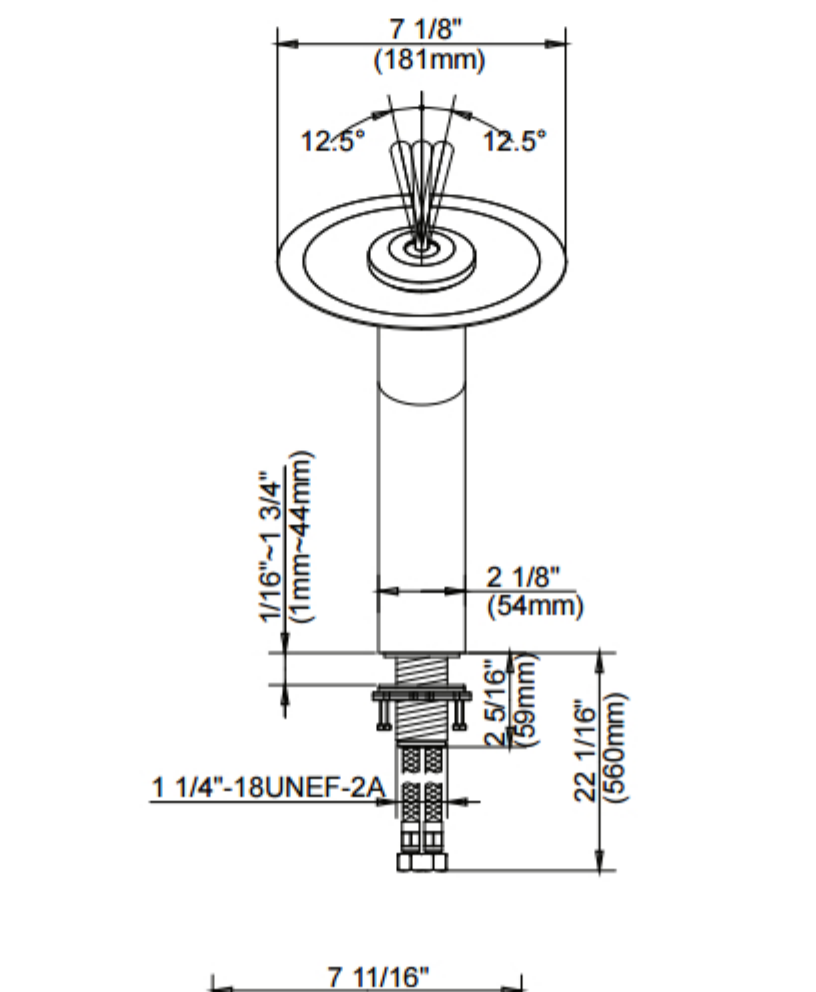
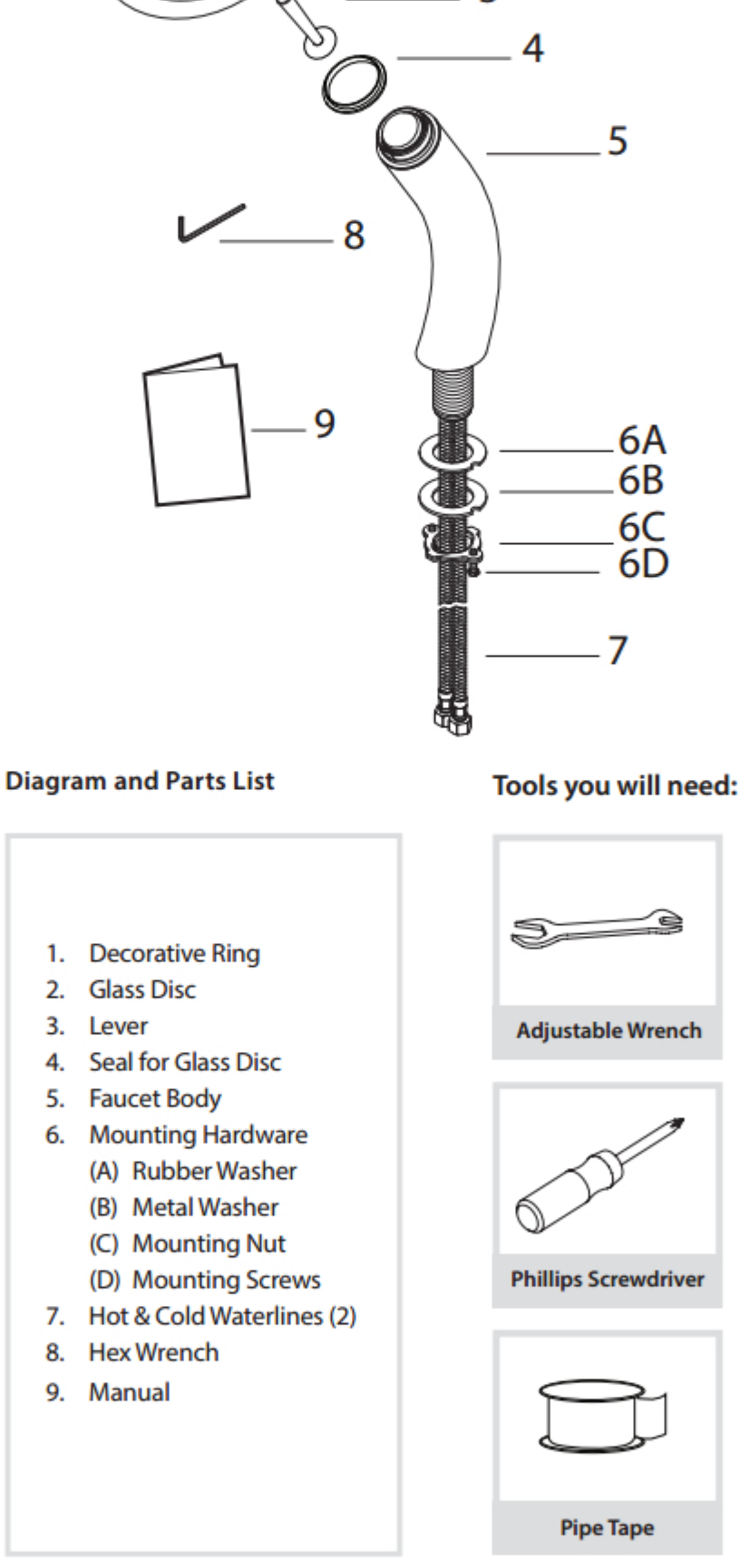


INSTALLATION INSTRUCTIONS

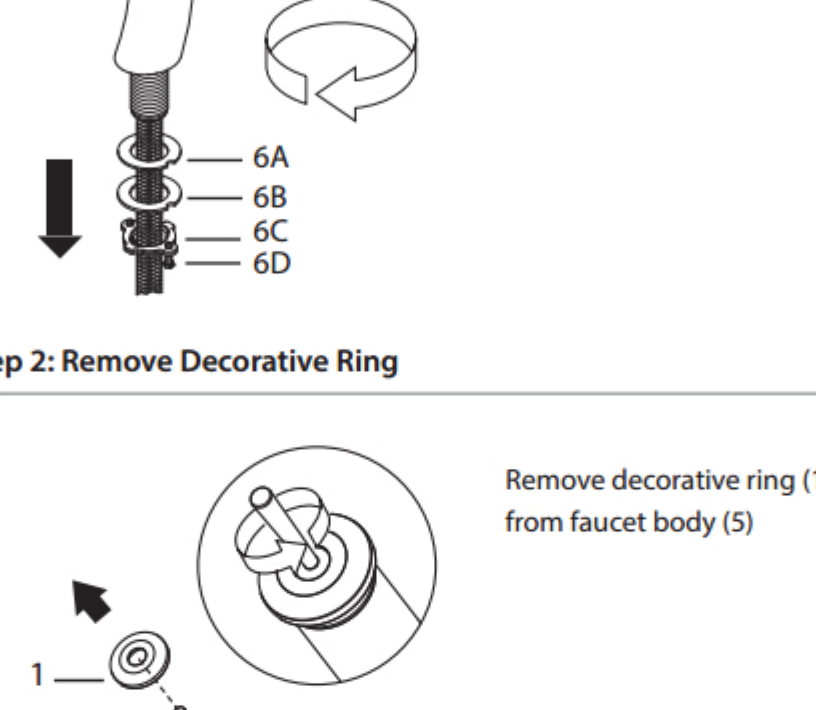
Prior to Installation:

- Make sure you have all necessary parts by checking the diagram and parts list. If any part is missing or damaged, please contact Juno showers Customer Service at 800-297-0232 for a replacement•
- Turn off the hot and cold water supply at the angle stops and turn on the old faucet to release any built up pressure. Remove existing faucet. Clean sink or countertop to remove any debris, plumber's putty, or silicone • Place bucket under angle stops. Turn on angle stops to flush any debris prior to installing new plumbing. Shut off angle stops •

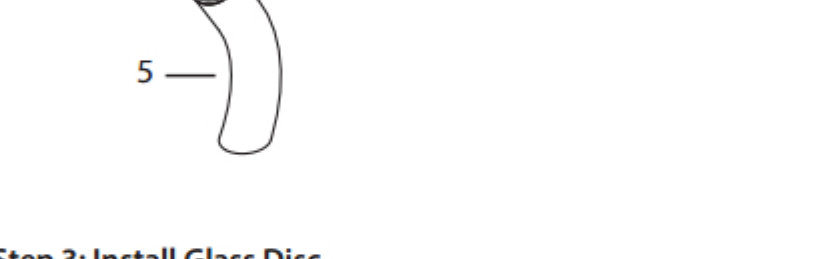
- Pre-drilled hole size requirement: 1 3/8" (min) •
- Max countertop thickness: 1 3/8"



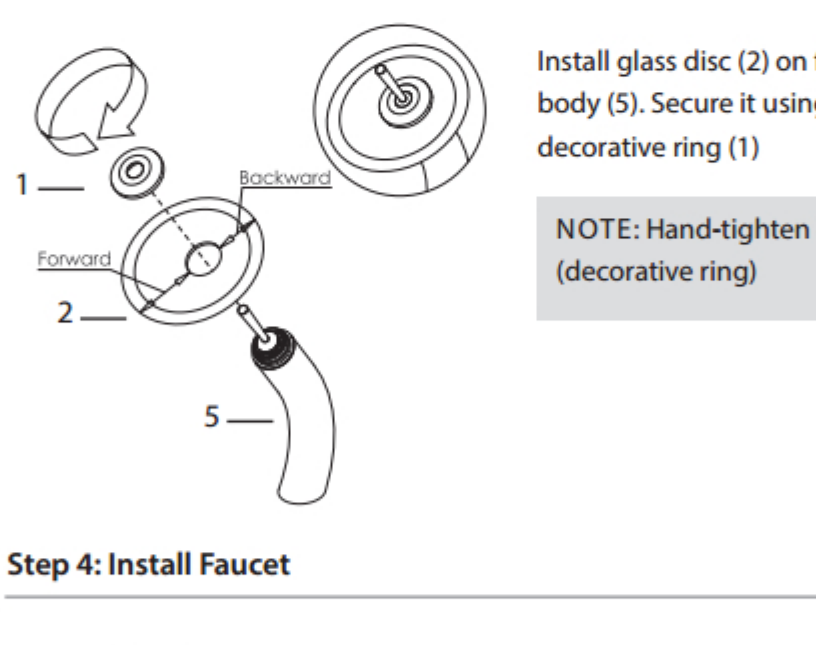
Step 1: Remove Mounting Hardware



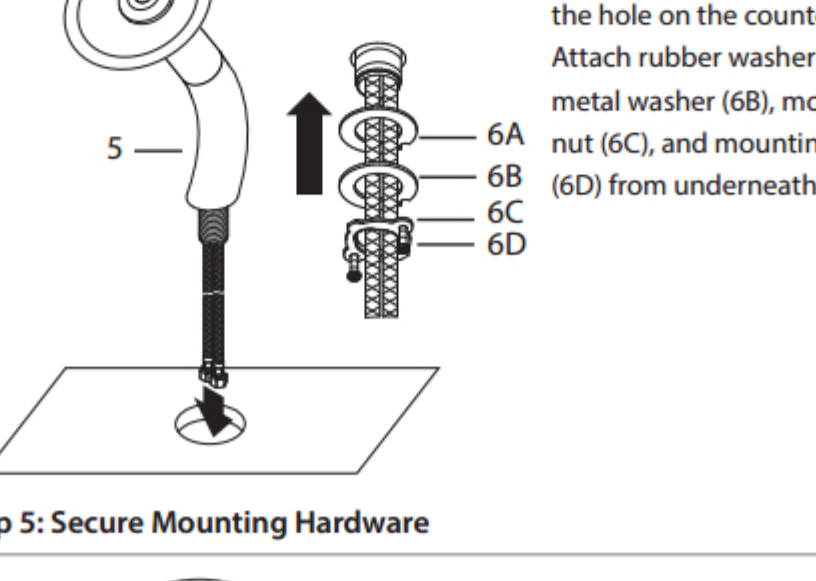
Step 2: Remove Decorative Ring



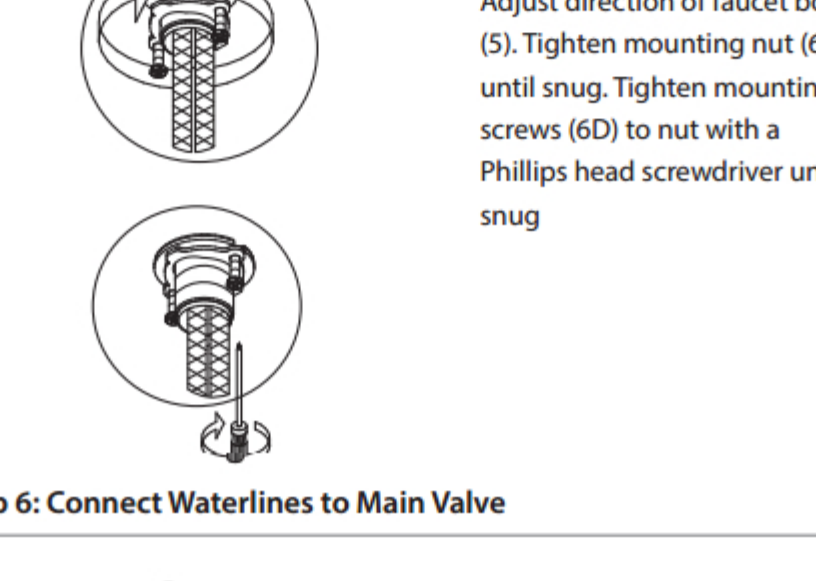
Step 3: Install Glass Disc



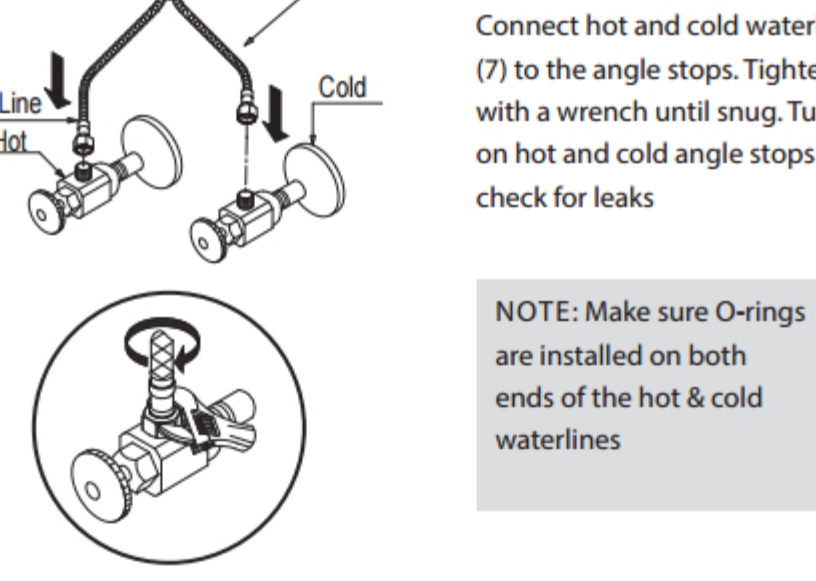
Step 4: Install Faucet



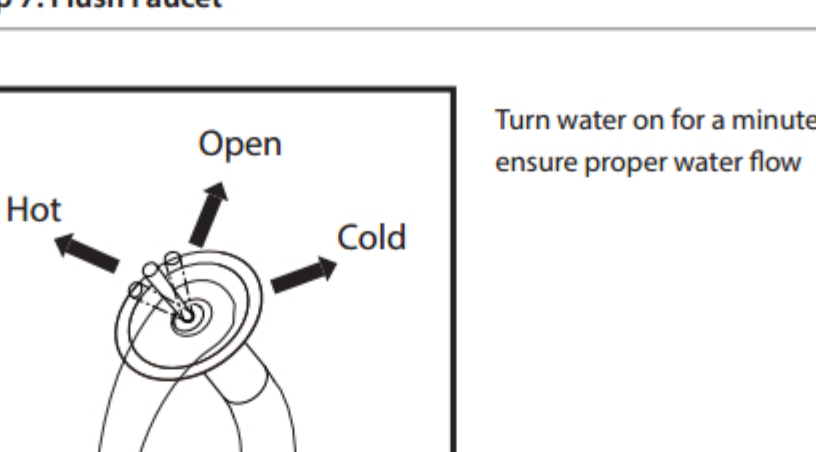
Step 5: Secure Mounting Hardware



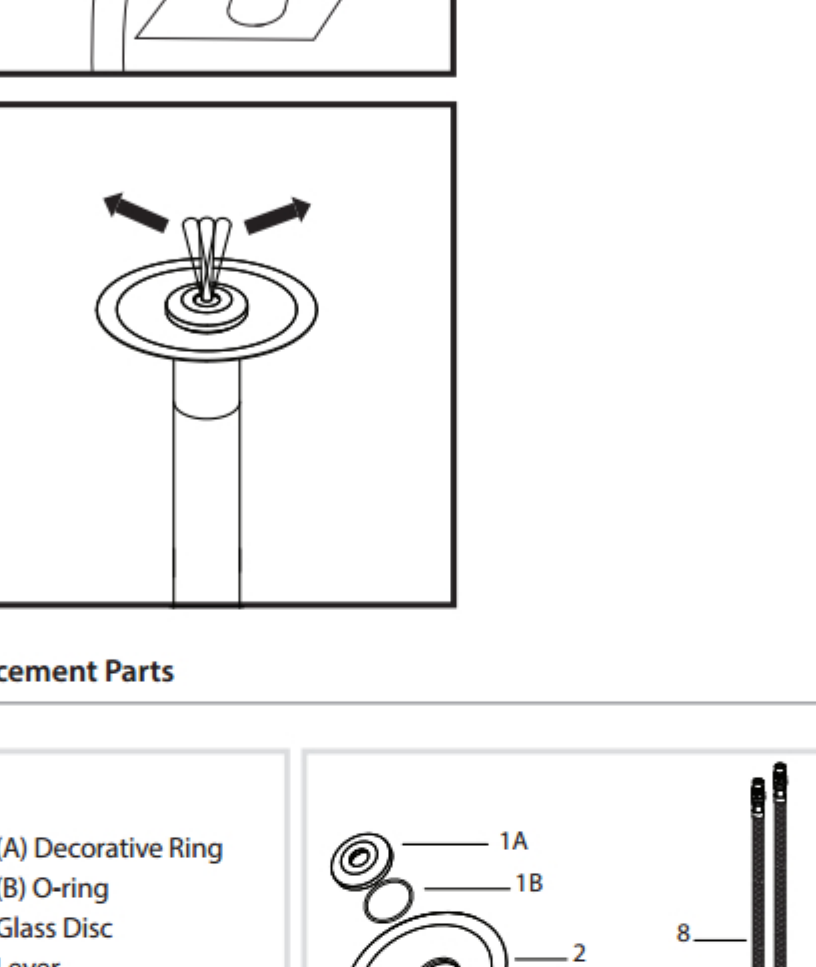
Step 6: Connect Waterlines to Main Valve



Step 7: Flush Faucet



Replacement Parts



Trouble - Shooting

If you have followed the instructions carefully and your faucet still does not work properly, take the following corrective steps:

PROBLEM	CAUSE	ACTION
Leakage under the handle	Locking nut has come loose	Unscrew the decorative ring (by hand) and remove the glass disc. Loosen set screw with a hex wrench located underneath lever and remove lever. Tighten locking nut with a reversible wrench
Water will not shut off completely	Cartridge may be defective	Unscrew decorative ring (by hand) and remove glass disc. Loosen set screw with a hex wrench located underneath lever and remove lever. Unscrew locking nut with a reversible wrench. Remove ceramic disc cartridge. Check for cracks
Drain is leaking	Washers may be compromised or installed incorrectly	Check washers to make sure they are installed correctly and not cracked

This General diagram and installation instructions are not intended for any specific model, but is presented as a general guideline for Installations!