

Leonardo Sárga Contemporary Bath Sink Faucet



INSTALLATION INSTRUCTIONS

RECOMMENDED TOOLS



Screwdriver



Channel Locks



Goggles



Adjustable Wrench



Teflon tape



Allen key

WARNING:
Please keep the tool for future use!

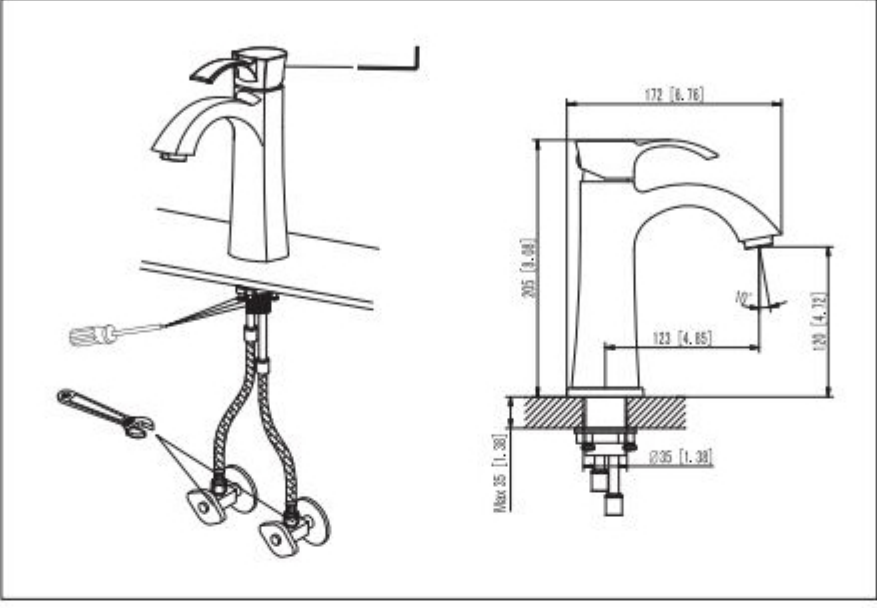
Attention:
for easy installation, you will need:
1.To read all the installation instruction completely before beginning.
2.To read all the warning, attention and maintenance information.
3.To purchase the proper supply lines.



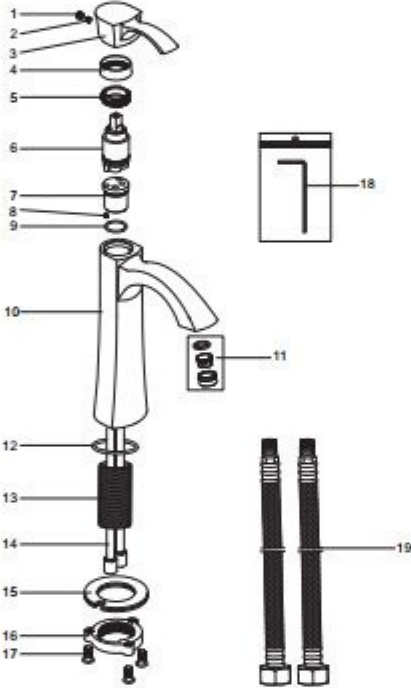
SINGLE HANDLE LAVATORY FAUCET


ASME A112.18.1/CSA B125.1

The tools might be applied to the following places:

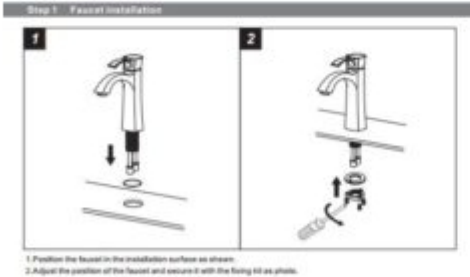
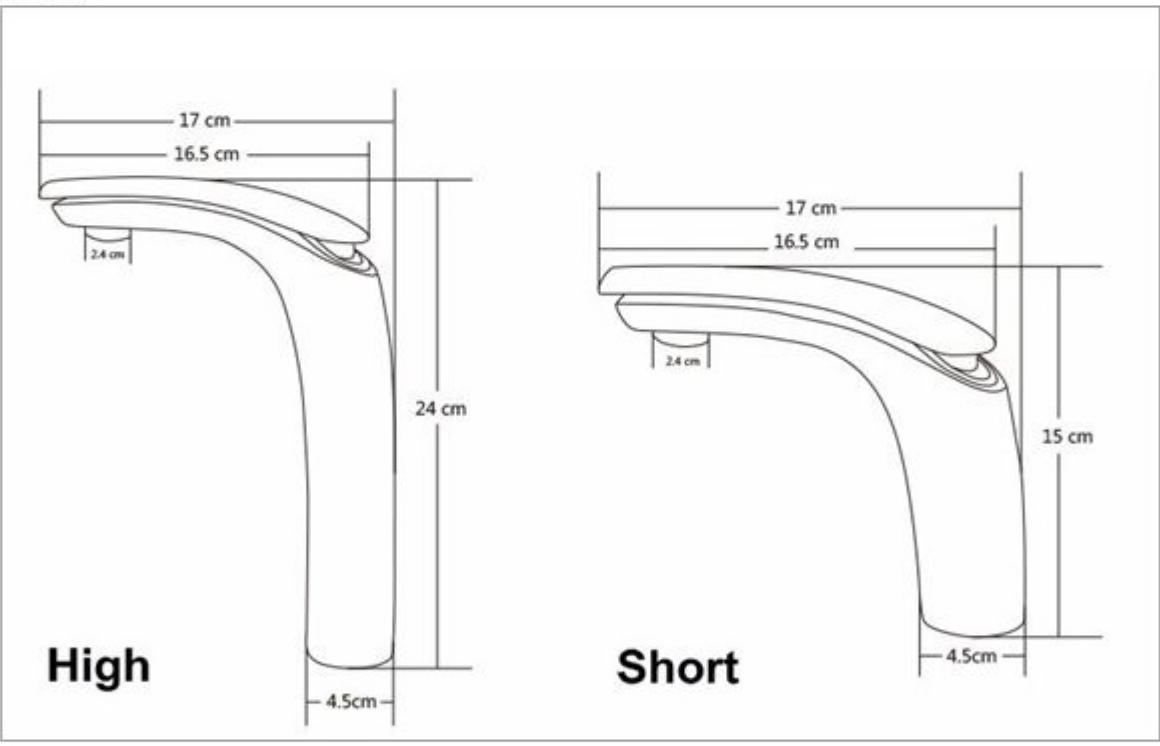


Parts list

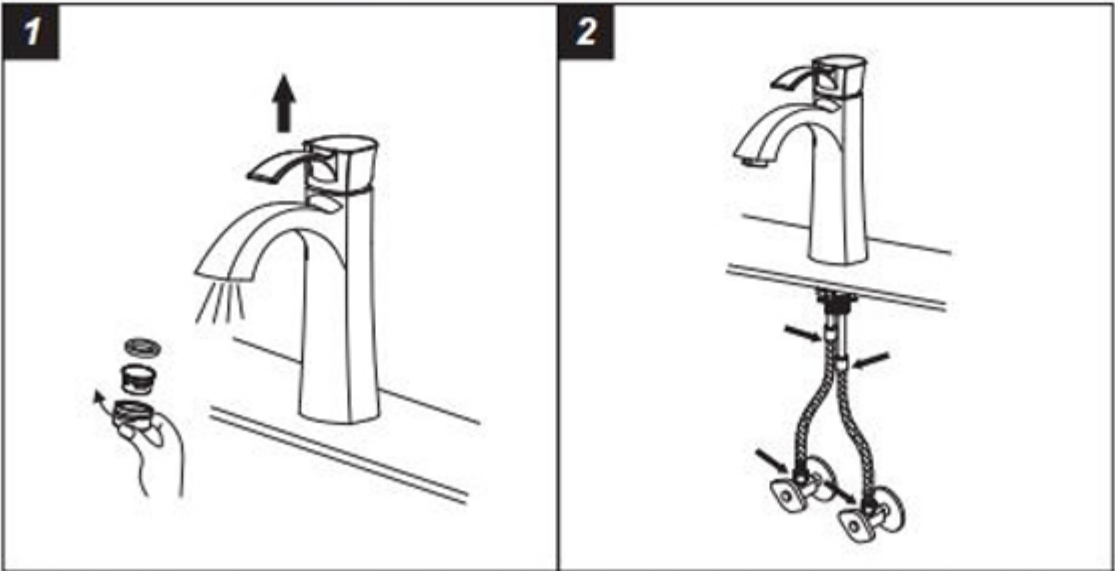


NO.	PART NAME
1	Index
2	Screw
3	Handle
4	Trim cap
5	Cartridge lock nut
6	Cartridge
7	Cartridge seat
8	Screw
9	O-ring
10	Body
11	Aerator assembly
12	O-ring
13	Threaded sleeve
14	Copper tube
15	Gasket assembly
16	Lock nut
17	Screw
18	Allen key
19	Flexible hose

Taranto Deck Mounted Single Handle Faucet with Hot/Cold Water Mixer



Step 2 Checking and testing



1.Remove the aerator by hand. Turn the faucet handle all the way on, turn on hot and cold water supply and flush water lines for one minute. Reinstall aerator by hand.
2.Check all connections at arrows for leaks, re-tighten it if necessary. **BUT DON'T OVERTIGHTEN!**

Step 3 Cleaning and care

Daily cleaning and care are required in order to keep the product shining and properly working.

- 1 Clean it with water and dry it with soft cloth.
- 2 Clean the product with gentle liquid or glass cleaner.
- 3 Don't use acid cleaner.
- 4 Don't clean with abrasive material, abrasive paper or knife.

This General diagram and installation instructions are not intended for any specific model, but is presented as a general guideline for Installations!