



TWO-PIECE TOILET

Model: **LT1D**

INSTALLATION INSTRUCTIONS



READ ALL INSTRUCTIONS BEFORE UNPACKING THE PRODUCT

INSTRUCTIONS THAT, IF IGNORED COULD RESULT IN DEATH OR SERIOUS INJURY CAUSED BY INCORRECT HANDLING OR INSTALLATION OF THE PRODUCT. THESE INSTRUCTIONS MUST BE OBSERVED FOR SAFE INSTALLATION.

CAUTION!

**TWO PERSON
LIFT REQUIRED**
**2 PEOPLE ARE REQUIRED TO LIFT AND DURING
ENTIRE INSTALLATION OF THIS PRODUCT**


INSTALLATION OF LESSCARE PRODUCTS BY AN
INEXPERIENCED INSTALLER MAY RESULT
PERSONAL INJURY OR DEATH!



LessCare reserves the right to change, update, modify, alter, redesign this manual/product or its policies without prior notice!
It is your responsibility to visit website to download or contact customer service for the most updated version of the installation instructions.

LessCare shall not be liable for any injuries or property damages in connection with this product during installation or use of this product!

LessCare products must be installed by a fully insured and licensed plumber only. Installation of any LessCare product by anyone other than fully insured and licensed plumber shall void limited warranty. LessCare recommends that such licensed plumber have experience in the installation of products.

Limited warranty is void on any commercial installation

LessCare is not responsible for local code compliance for this product. Building and plumbing codes may vary from state-to-state in accordance to your location. LessCare is not responsible for providing any compliance certifications.

LessCare is not responsible to provide any type of certifications for this product

Under no circumstances LessCare shall not be liable for any and all incidental damages sustained in connection with this product

Neither manufacture, nor distributor, nor retailer is responsible for water damage or flood caused due to use of this product.

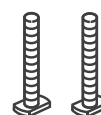
Under no circumstances LessCare shall not be liable for any and all fees, cost of installation/reinstallation/removal, subsequent damage or transportation in case of the product defect

TOILET COMPONENTS

During unpacking the product and prior installation inspect your new product for any damages or missing parts. Do not attempt to install or operate the product if the product is damaged.



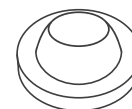
One piece toilet
with soft-close
toilet seat x 1



Closet
Bolts x 2



Nuts x 2
Washers x 2

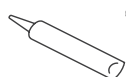


Wax
Ring x 1

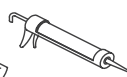
TOOLS REQUIRED FOR INSTALLATION



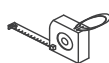
Soft Cloth
or Blanket



Silicone



Silicone/
Caulk Gun



Tape
Measure



Pencil/Marker



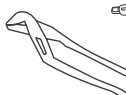
Safety Glass



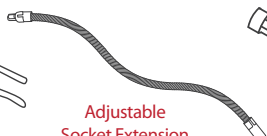
Knife



Adjustable
Wrench



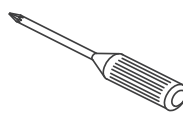
Channel
Lock Pliers



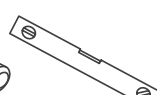
Adjustable
Socket Extension



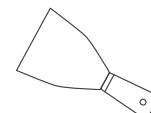
Hand
Wrench



Philips
Screwdriver



Level

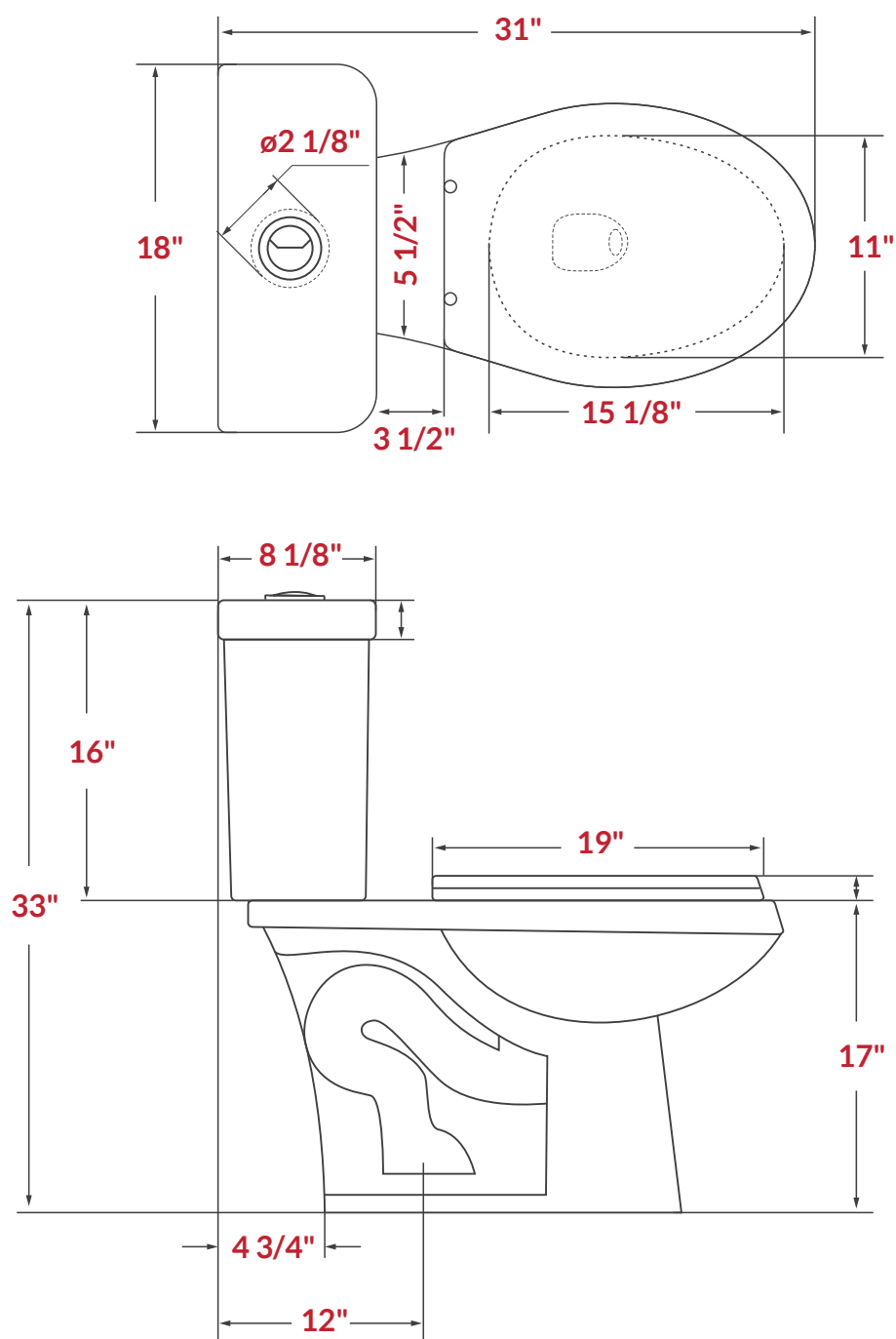


Putty Knife

OTHER TOOLS MAY BE REQUIRED

www.lesscare.com

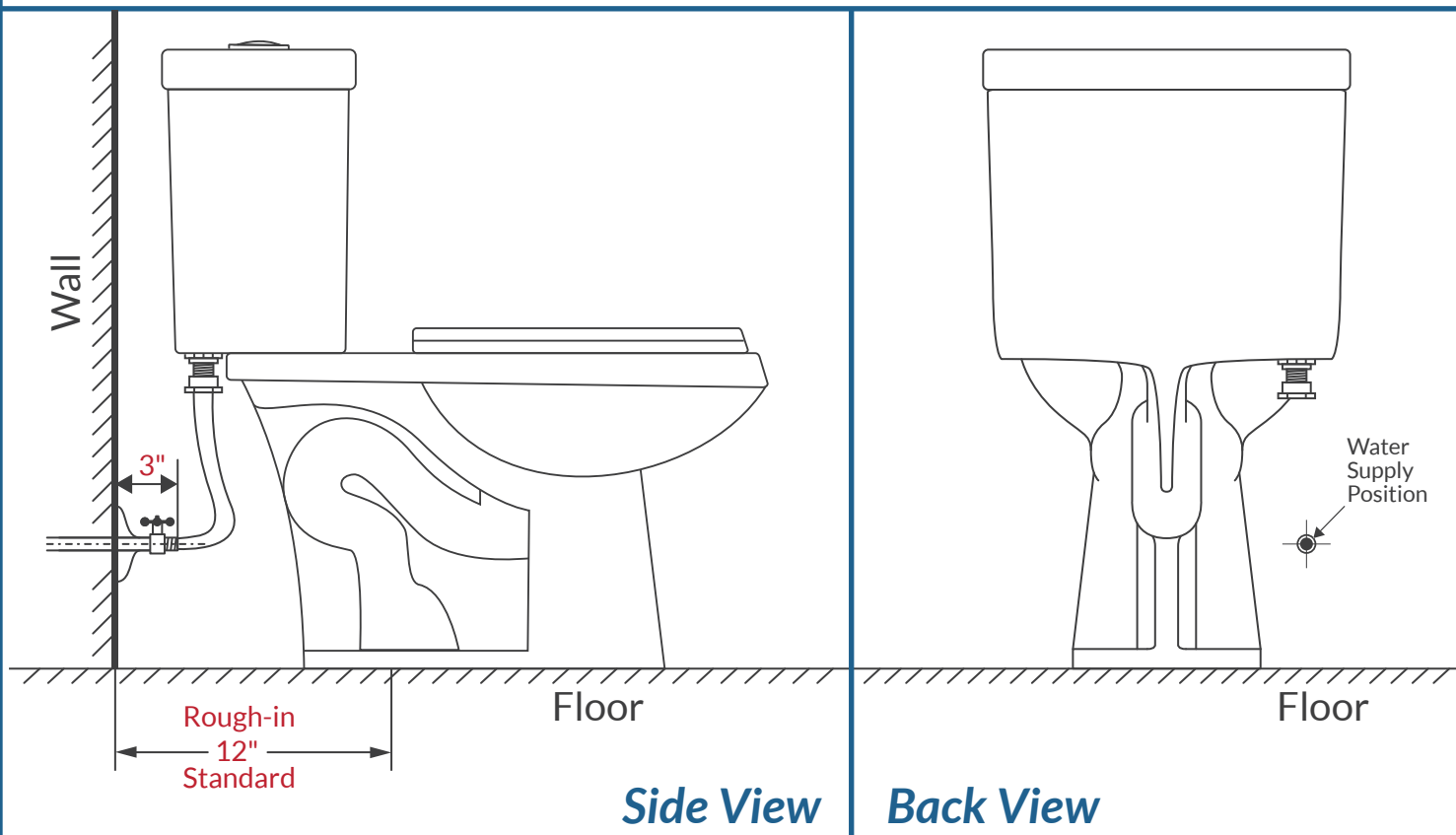
DIMENSIONS/TECHNICAL DATA



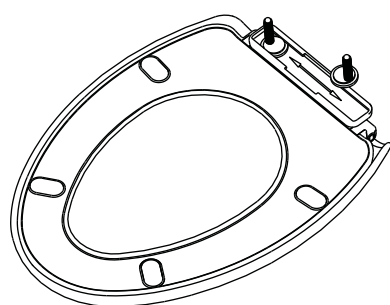
ATTENTION! Dimensions may vary by up to $\frac{3}{8}"$. It is highly recommended to pull all dimensions of actual model for installation and measuring purposes.

TECHNICAL DATA

WATER SUPPLY LOCATION & TOILET SEAT ADJUSTMENT

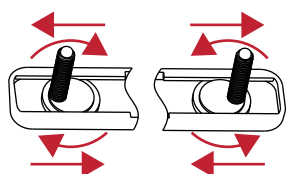


ADJUST SOFT-CLOSE SEAT



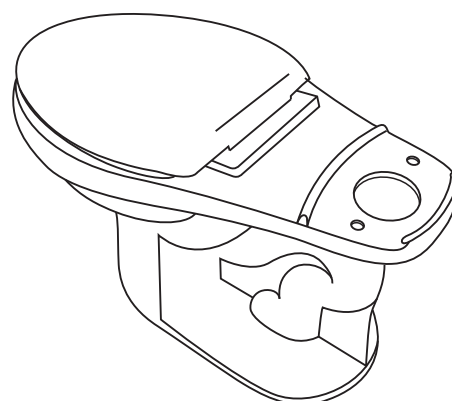
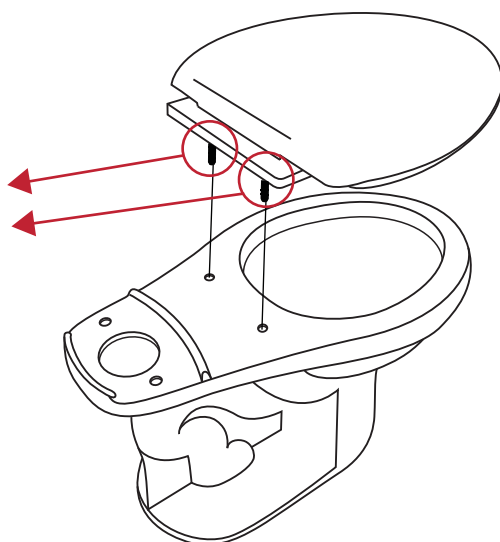
1. Insert bolts

Install toilet seat mounting bolts by inserting every bolt's cap into the bolt holder and slide it to the side as shown on the image.



2. Adjust bolts and install toilet seat

Adjust position of the bolts on the seat to match the holes on toilet bowl and install the toilet seat.



3. Secure toilet seat

Attach plastic washers and then plastic nuts to secure the installed toilet seat to the toilet bowl.

Important: Do not use any type of pliers at this step. Use only hand power. Using pliers or similar tools may damage the plastic mounting hardware or the toilet itself.



IMPORTANT!

Shut off main water supply prior to installation!

REMOVE OLD TOILET

1. Shut off water supply line. If you do not have shut-off valve near the toilet shut off main water supply line.
2. Flush the old toilet and make sure that tank is empty.
3. Disconnect and remove water supply line connected to the toilet's tank.
4. Remove old toilet, bolts, nuts from the closet flange.
5. Clean closet flange area from old wax ring and putty sealant using putty knife from the base area.
6. Clean any remaining debris and wipe any water at the installation area
7. Temporarily plug flange on a floor with a flange plug or towel to prevent gasses from escaping

IMPORTANT! The mounting surface area must be clean, dry, and leveled prior to installation of the new toilet!

NOTE! Inspect the existing closet flange for damages. If damaged, replace it to new flange before proceeding to the installation

PREPARE CLOSET FLANGE

Make sure that rough-in is 12" by measuring the distance from the wall to the center of the closet flange.

See Figure 1

Step 1. Insert 2 floor bolts inside of the toilet flange

Step 2. Slide the closet bolts through the holes and align bolts horizontally.

See Figure 2

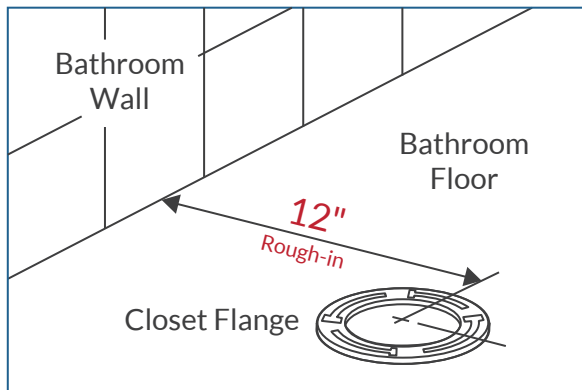


Figure 1

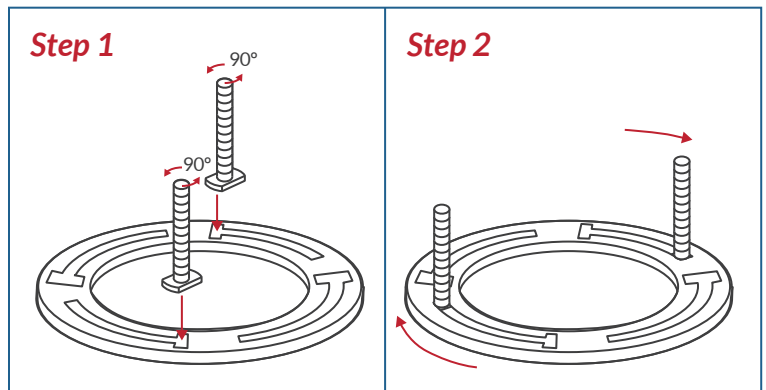


Figure 2

INSTALL WAX RING

Important: safety glasses must be worn by the installer and all bystanders.

Cover the floor with a soft-close blanket. Carefully turn the toilet on it's side or upside-down on the blanket with assistance of a second person. Install wax ring over the horn discharge located on the bottom of the toilet's bowl. See Figure 3

Note: Ceramic is a fragile material. Always cover the floor with a soft-cloth blanket if you want to put the toilet on the floor on any side other than the bottom of the toilet. If you do not cover the floor with the blanket contact of the toilet with the floor may and will cause minor or moderate scratches on the toilet's surface.

Prior to installtion the wax ring must be kept in a room temperature between 70-75°F.

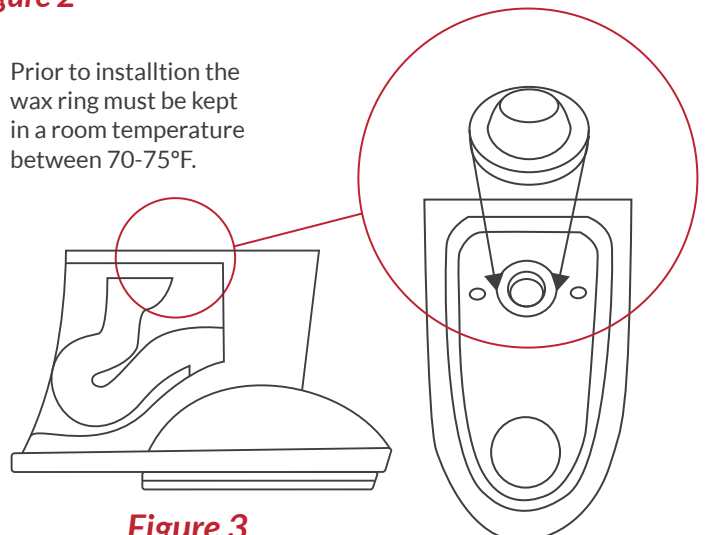


Figure 3

Always Use Soft-Cloth Blanket

INSTALLATION INSTRUCTIONS

INSTALL NEW TOILET

Step 1. Lift and carefully put the toilet over the closet flange so the closet bolts can go through the mounting holes in the toilet's base. Once the bowl is in the position press the bowl down with slight twisting motion in level position towards the floor. Apply your body weight to evenly compress the wax ring to create watertight seal. Make sure that the bowl is as leveled as possible to have a nice seal tight.

Do not rock the toilet back and forth and side to side as it may and will break a seal and you will need to replace the wax ring again and start the installation process over.

See Figure 4

Step 2. Once the toilet is set and leveled install washers and nuts over the closet bolts. Tighten nuts. Do not overtighten the nuts. It may and will cause damage to the toilet's ceramic base. Install bolt caps on top of the bolts.

See Figure 5

CONNECT TOILET'S TANK TO WATER SUPPLY LINE

Connect the water supply line between the tank and water shut-off valve using a toilet hose (not supplied). When connecting toilet hose tighten coupling nut to the tank by 1/4 turn beyond the hand tight.



Do not overtighten nut on the tank connection. It may and will cause water leakage.

Turn on valve on water supply line and allow tank to fill. Check all connections for leakages and tighten as needed. Once tank is filled with water flush it 4-5 times to perform a test of the flushing system. At the same time check the bottom of the toilet for leaks to make sure that the wax ring is properly installed and sealed.

If there are no leaks you are ready to finalize the installation. If any shims are installed at the bottom of the toilet's bowl you may trim them. Apply silicone around base of the toilet's. Allow 24 hours for silicone to dry before start using the toilet. See Figure 6

Important: Leaks may not occur during or right after the installation. Make sure to check for leaks every couple hours first day installed and occasionally check it everyday for the next week to ensure that toilet is properly installed and no leaks occur. If any leaks occur immediately shut off the water supply line valve and contact your local plumber to fix all leaks.

Important:

Under no circumstances LessCare shall not be liable for any and all incidental damages sustained in connection with this product

Neither manufacture, nor distributor, nor retailer is responsible for water damage or flood caused due to use of this product.

Under no circumstances LessCare shall not be liable for any and all fees, cost of installation/reinstallation/removal, subsequent damage or transportation in case of the product defect

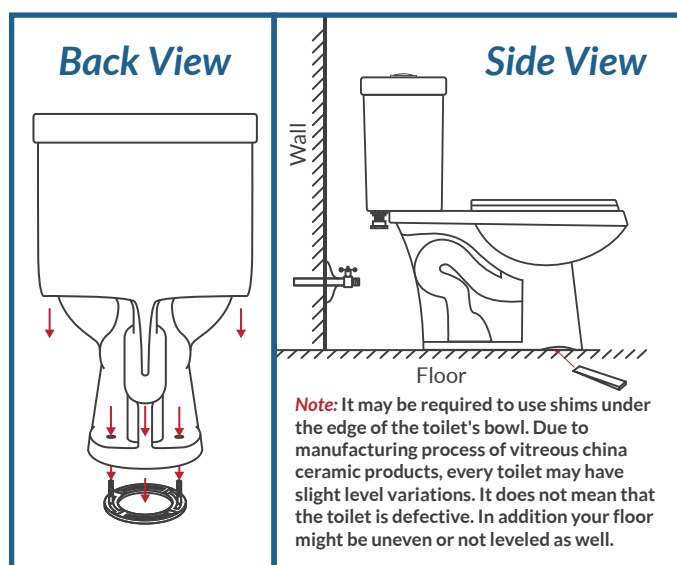


Figure 4

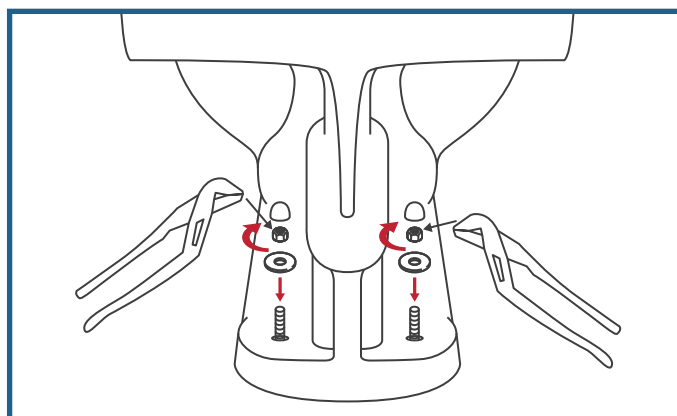


Figure 5

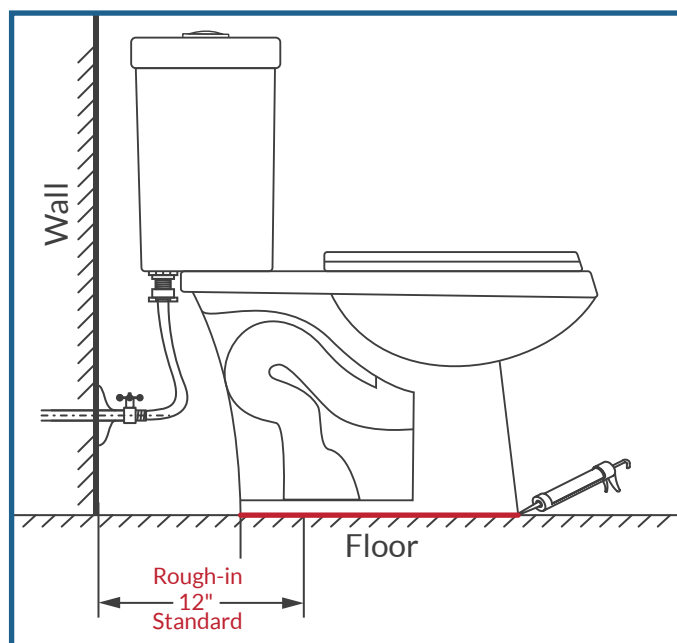


Figure 6

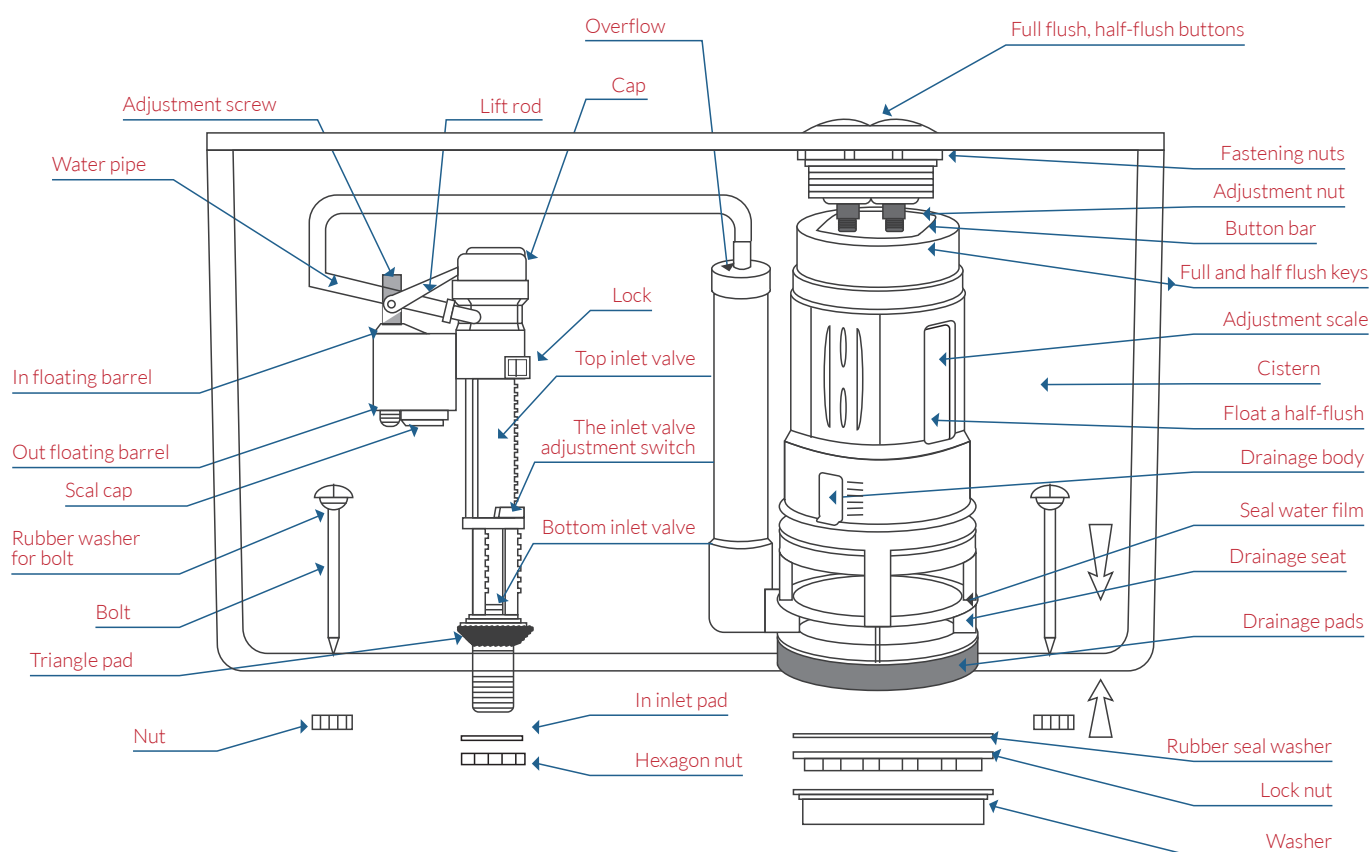


IMPORTANT!

Read the instructions carefully before installation or adjustment of the toilet

FUNCTIONS

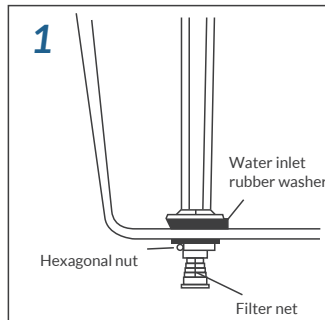
Water supply upright. Water level adjustment. Instant water stopping. Drain valve has full and half-flush functions.



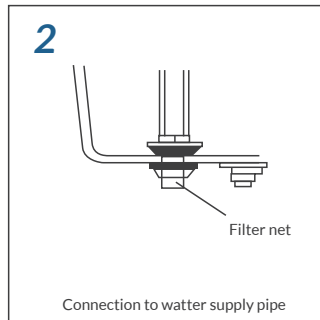
IMPORTANT!

- 1) Do not use in-tank cleaning solutions containing chlorine, calcium hypochlorite, or any other chemicals
- 2) Do not use any components by third party suppliers. Only original LessCare components must be used
- 3) This product and its components operate at the water temperature between 41°F - 104°F (5°C - 40°C)
- 4) This product and its components operate at the water pressure between 0.04 mPa - 0.8 mPa

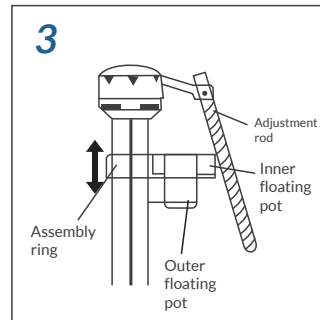
INSTALLATION STEPS



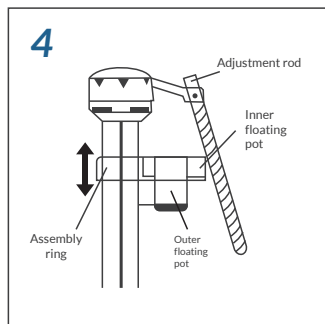
Turn off the hexagonal nut. Put the inlet valve into the water inlet of the cistern. Make sure the inlet rubber washer and the filter net are in position shown in the figure then place the hexagonal nut and secure it.



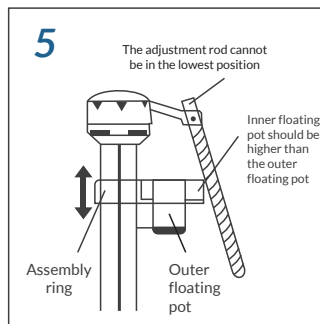
Let water flush through the water supply pipe.



Turn the adjustment rod by 90 degrees and pull it out. Push up or press down the assembly ring to adjust the height of the floating pot. Adjust the height of water level. Press the inner floating pot, pull the adjusting rod to the lowest position and rotate it by 90 degrees.

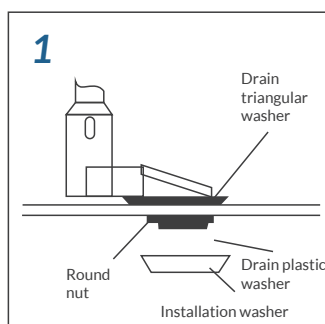


The inner and outer floating pots are in same height. Insert the adjusting rod into the inner floating pot while the adjusting rod is put in the lowest position.

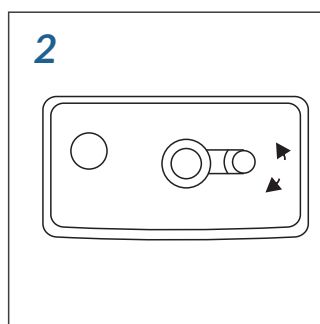


The inner floating pot is above the top side of the outer floating pot. Insert the adjusting rod into the inner floating pot while the adjusting rod is not in the lowest position.

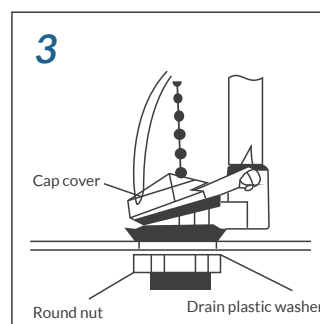
INSTALLATION STEPS



Turn the nut tightly. Make sure the drain triangular washer touch the wall of the cistern. Install the cap cover onto the two hooks of the drainage assembly.



Regulate the angle of drain valve A, so that the chain of the cap cover will not be affected when it is installed later and the cap cover is easily opened. Rotate the nut tightly so that the drain triangular washer is completely sealed with the rim of the ceramics hole.



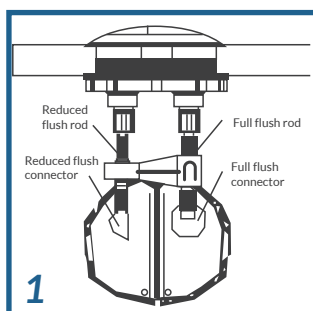
Remove the round nut and drain plastics washer. Put the drain valve into the central hole in the bottom of cistern. Make sure the drain plastic washer, drain triangular ring are the position shown in the figure.



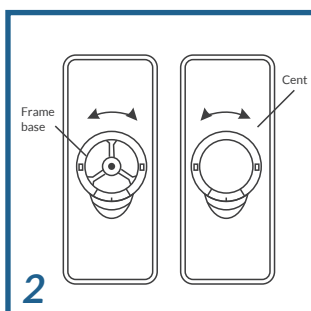
IMPORTANT!

Installation is required by licensed and insured professional only.
Flush valve must be properly secured to avoid leakage.
Neither LessCare nor its distributors are responsible for any damages of the toilet and/or its parts due to the excessive force used during installation.

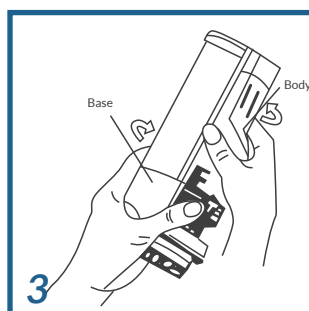
INSTALLATION STEPS



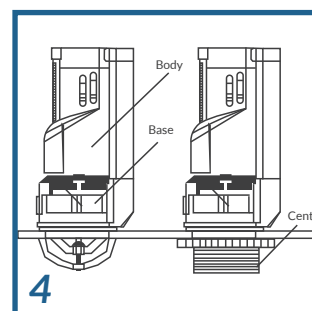
Adjust the direction of button to align the reduced flush rod to the reduced flush connector and the full flush rod to the full flush connector. Then screw up the nut.



Install the base of the flush valve into the outlet hole, with the U hook just resting on the wall of the tank. Rotate the base to a proper angle and secure it with the screw.



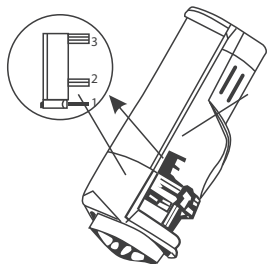
Rotate the flush valve body as shown in the figure to remove the flush valve body from the base.



Reinstall flush valve body into the base. Rotate in to a proper position and fasten it.

WATER LEVEL ADJUSTMENT

Full flush water level adjustment:

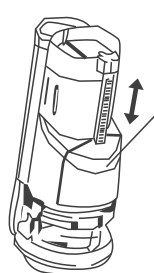


Red adjustment chip

The red adjustment chip is able to adjust the full flush water level:

1. When the red adjusting chip is set at first grade, the full flush water level is at its lowest position and the full flush is at its biggest capacity.
2. When the red adjustment chip is set at third grade, the full flush water level is at its highest position and the full flush is at its biggest capacity.
3. When the red adjustment chip is set upward, the full flush water level goes up while the full flush capacity reduces.

Reduced flush water level adjustment:



Reduced flush float

The set position of the float decides the capacity of the reduced flush:

1. When the red adjusting chip is set at first grade, the full flush water level is at its lowest position and the full flush is at its biggest capacity.
2. When the red adjustment chip is set at third grade, the full flush water level is at its highest position and the full flush is at its biggest capacity.
3. When the red adjustment chip is set upward, the full flush water level goes up while the full flush capacity reduces.

TROUBLESHOOTING

Symptom	Solution
Water level is too low or too high	Readjust according to Figure 1.2
Intake valve cannot stop the water or take water in or the flow is too small.	<ol style="list-style-type: none"> 1. Check if the intake switch is open. 2. Check if the refill tube presses over the float. 3. Check the filter net periodically.
Leakage	<ol style="list-style-type: none"> 1. Check if the intake valve nut is fastened. 2. Reinstall the flush valve according to the procedures.
Without reduced flush	Without reduced flush
No flush or flush too small when press the button	<ol style="list-style-type: none"> 1. Make sure the button is press firmly. 2. Check if the button connection rod is too short. If so, adjust the length or the connection rod.



TWO-PIECE TOILET
LT1D

MAINTENANCE & CARE

MAINTENANCE & CARE

Use soft sponges or soft-cloths to clean the surface. Always rinse thoroughly any cleaning solutions immediately after cleaning. Do not any chemical remain on the surface for extended periods of time.

IMPORTANT!

DO NOT USE: Abrasive cleaners such as: acid, ammonia, bleach, and similar solutions. Use of such solutions may cause corrosion, finish peeling, and/or dull the surface.

DO NOT USE: Abrasive sponges or cloth. Never use steel, wool, or wired brushes that will permanently scratch the surface.

FILL/FLUSH VALVES MAINTENANCE & CARE

Do not pour any amounts of chlorine or any other chemicals into the tank. Use of chemical products will result in damage to the fill valve and flush valve components and may cause flood and property damage

Note: fill and flush valves are maintenance free. No maintenance is required.

Retain these installation instructions for future reference!

Thank you for using
LessCare products!

