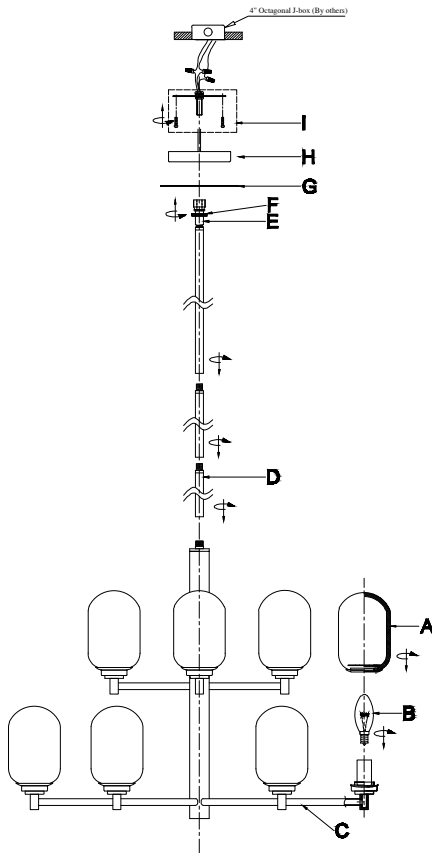


DIAGRAM OF INSTALLATION STRUCTURE

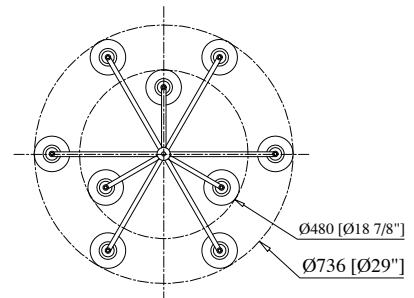
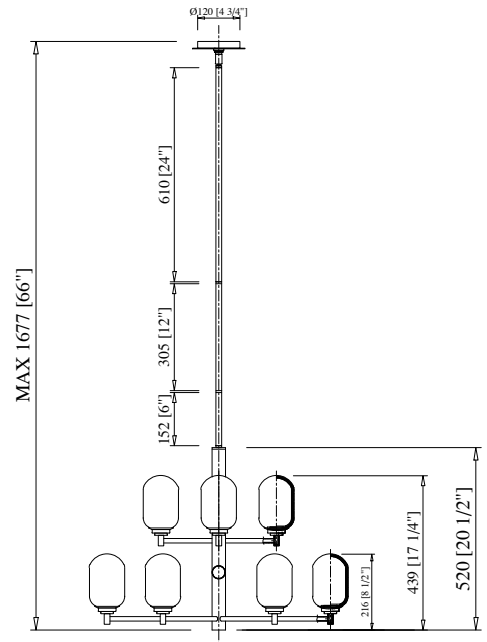
SKU No. :CE1013061

Product Size: Ø29"*H20 1/2"

Light Source: 9 × B10 E12 Bulb



- A: Glass shades
- B: B10 E12 bulbs(Not Included)
- C: Frame
- D:1x6"+1x12"+1x24" Rods
- E: Swivel
- F: Threaded ring
- G: Decorative plate
- H: Canopy
- I: Mounting hardware



Installation instruction

1. Turn off the power.
2. Carefully push fixture wires from top of frame (C) up through the rods (D). Screw rods (D) onto top of frame (C).
3. Determine desired hanging height of fixture. Select the quantity of rods(D) to achieve that height.
4. Carefully push fixture wires through remaining rods (D). Screw rods (D) together.
5. Fasten mounting hardware(I) to junction box with machine screws.
6. Slip threaded ring (F) down ,position the threaded ring (F), decorative plate(G)and canopy(H) over end of rod (D) and screw the swivel onto the top of rod(D).
7. Raise the fixture up to the ceiling and do the wire connection. Place the canopy(H) over the junction box and secure with threaded ring (F).
8. Screw recommended bulbs(B) (E12 B10 bulb type, not included) into sockets.
9. Install the glass shades(A) onto the sockets.
10. After finish the installation, turn on the power.