

Shower Panel

Installation and Operation Guide

Caution:

Before connecting the shower panel, please flush out the debris inside the hot and cold water pipe. Installation without flushing out the debris might reduce water pressure, and cause damage and clogging to the hose and pipe



787-392-B



787-392-R



787-392-M



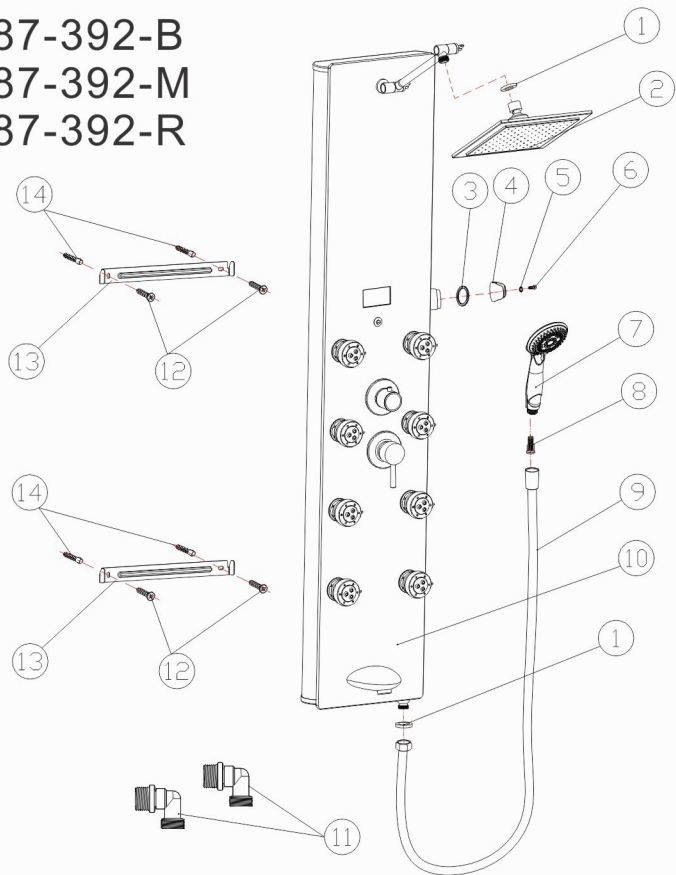
788-331-B



V878-392-H

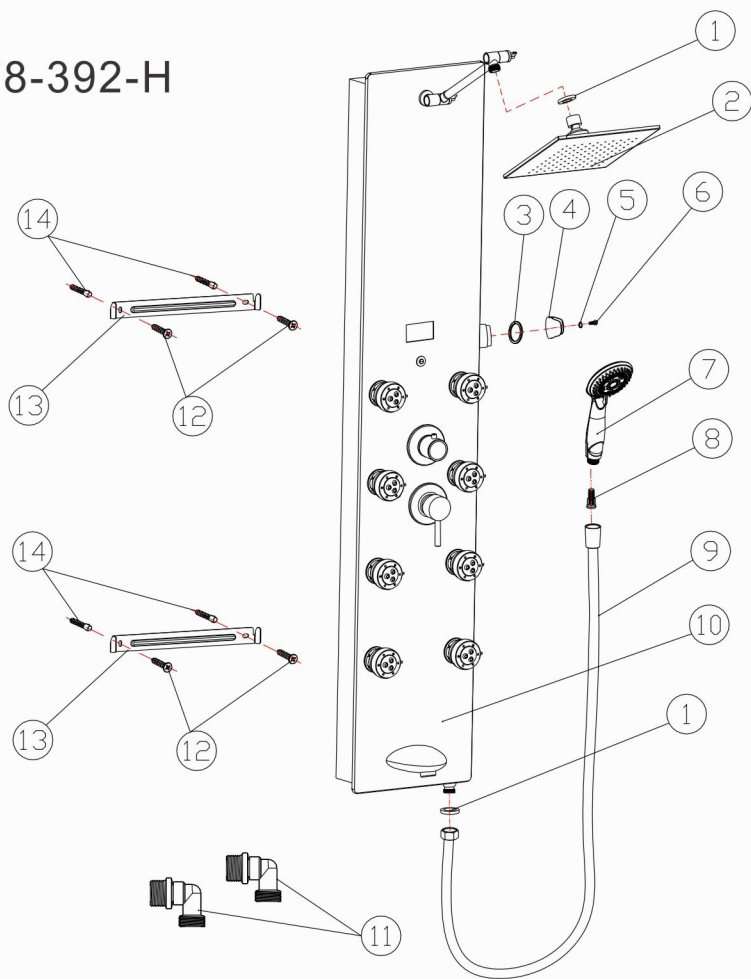
1.Part List

787-392-B
787-392-M
787-392-R



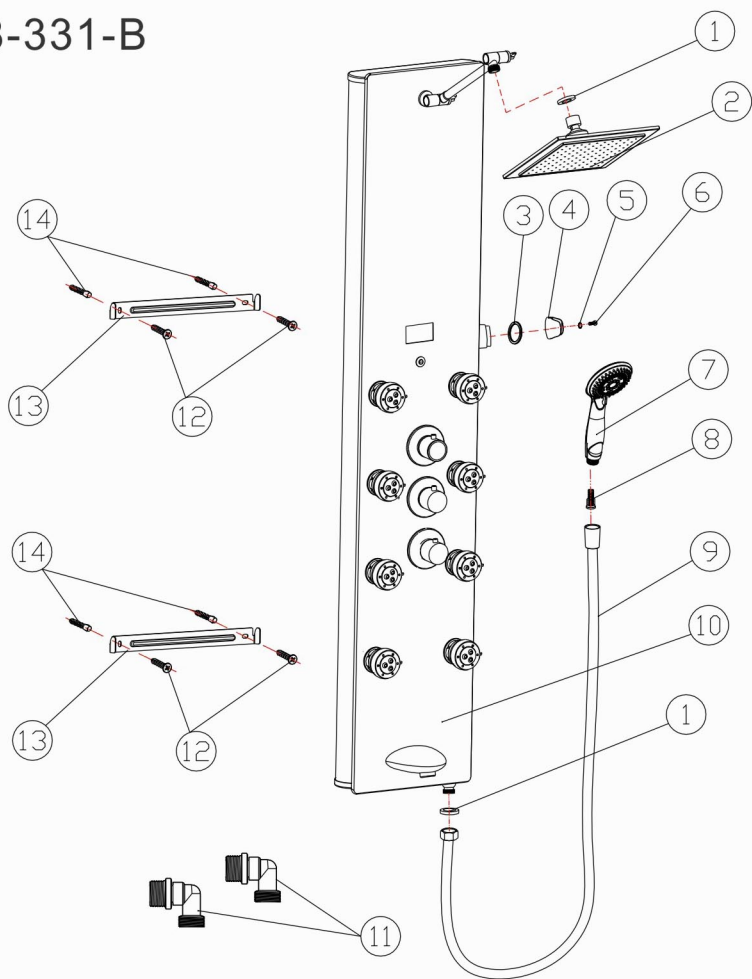
①	Rubber Washer	⑧	Shower Head Filter
②	6021A Rainfall Shower Head	⑨	Shower Head Hose
③	Shower Head Holder Washer	⑩	Shower Panel Body
④	Shower Head Holder	⑪	Brass Elbow(Optional Part)
⑤	M4 Ring	⑫	M4 X 20 Screws
⑥	M4X16 Screw	⑬	Mounting Bracket
⑦	392 Handheld Shower Head	⑭	Plastic Expand Plug

V878-392-H



①	Rubber Washer	⑧	Shower Head Filter
②	K05 Rainfall Shower Head	⑨	Shower Head Hose
③	Shower Head Holder Washer	⑩	Shower Panel Body
④	Shower Head Holder	⑪	Brass Elbow(Optional Part)
⑤	M4 Ring	⑫	M4 Screws X 20
⑥	M4X16 Screw	⑬	Mounting Bracket
⑦	392 Handheld Shower Head	⑭	Plastic Expand Plug

788-331-B

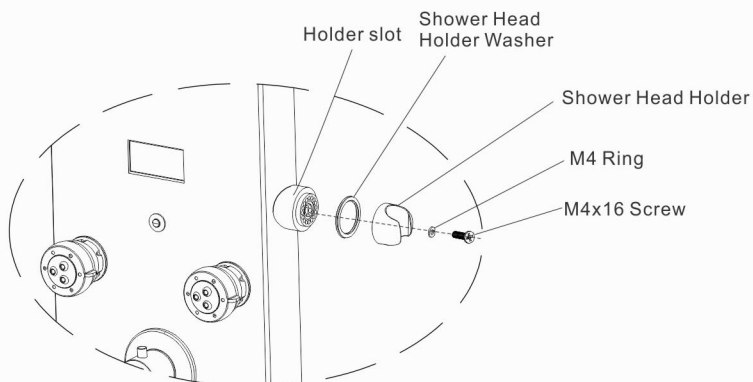


①	Rubber Washer	⑧	Shower Head Filter
②	6021A Rainfall Shower Head	⑨	Shower Head Hose
③	Shower Head Holder Washer	⑩	Shower Panel Body
④	Shower Head Holder	⑪	Brass Elbow(Optional Part)
⑤	M4 Ring	⑫	M4 X 20 Screws
⑥	M4X16 Screw	⑬	Mounting Bracket
⑦	331 Handheld Shower Head	⑭	Plastic Expand Plug

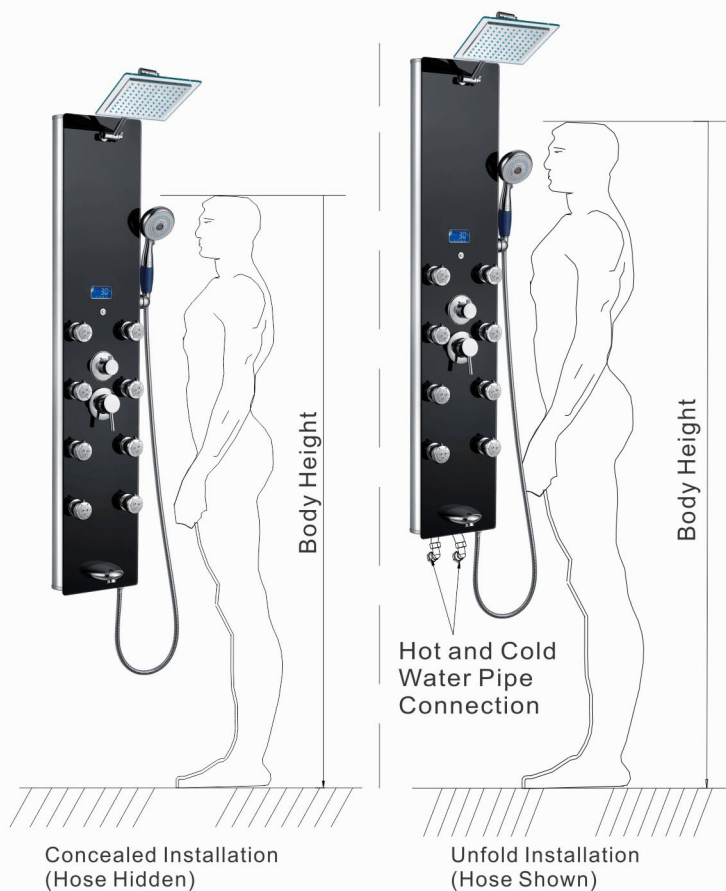
2. Installation

1) Installing the handheld shower head holder

Place the shower head holder washer onto the slot, and put on the shower head holder. Use M4 ring and M4X16 screw to secure the shower head shower. onto the slot



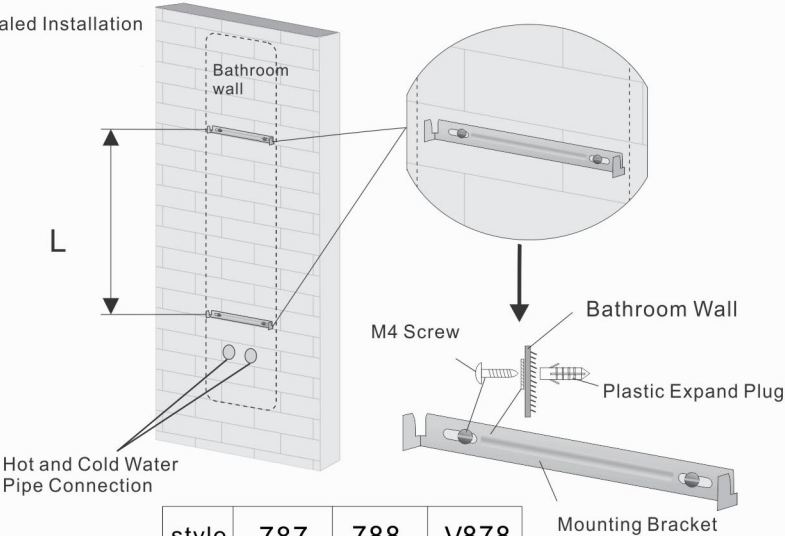
3. Based on the height of the user(s) and location of the hot/cold pipe inlet, select concealed or unfold installation. (See picture below)



4.Installing the mounting bracket :

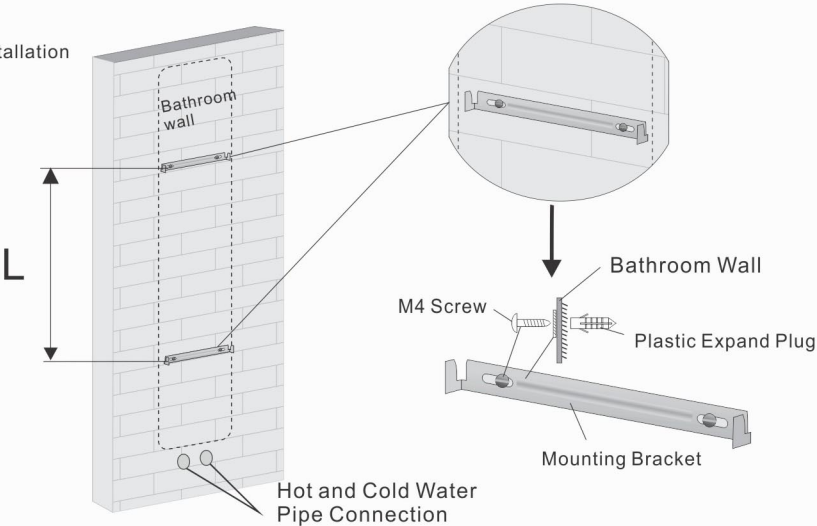
Base on the height you want to install the shower panel,mark and drill 4screw holes on the wall. Once the hole is drilled, put in the plastic expand plug and screw the mounting bracket onto the wall. When screwing the mounting bracket,please make sure that it is being screwed on a wood stud behind the wall in order to provide sufficient strength to hold the shower panel.

Concealed Installation



style	787	788	V878
L	650mm	650mm	510mm

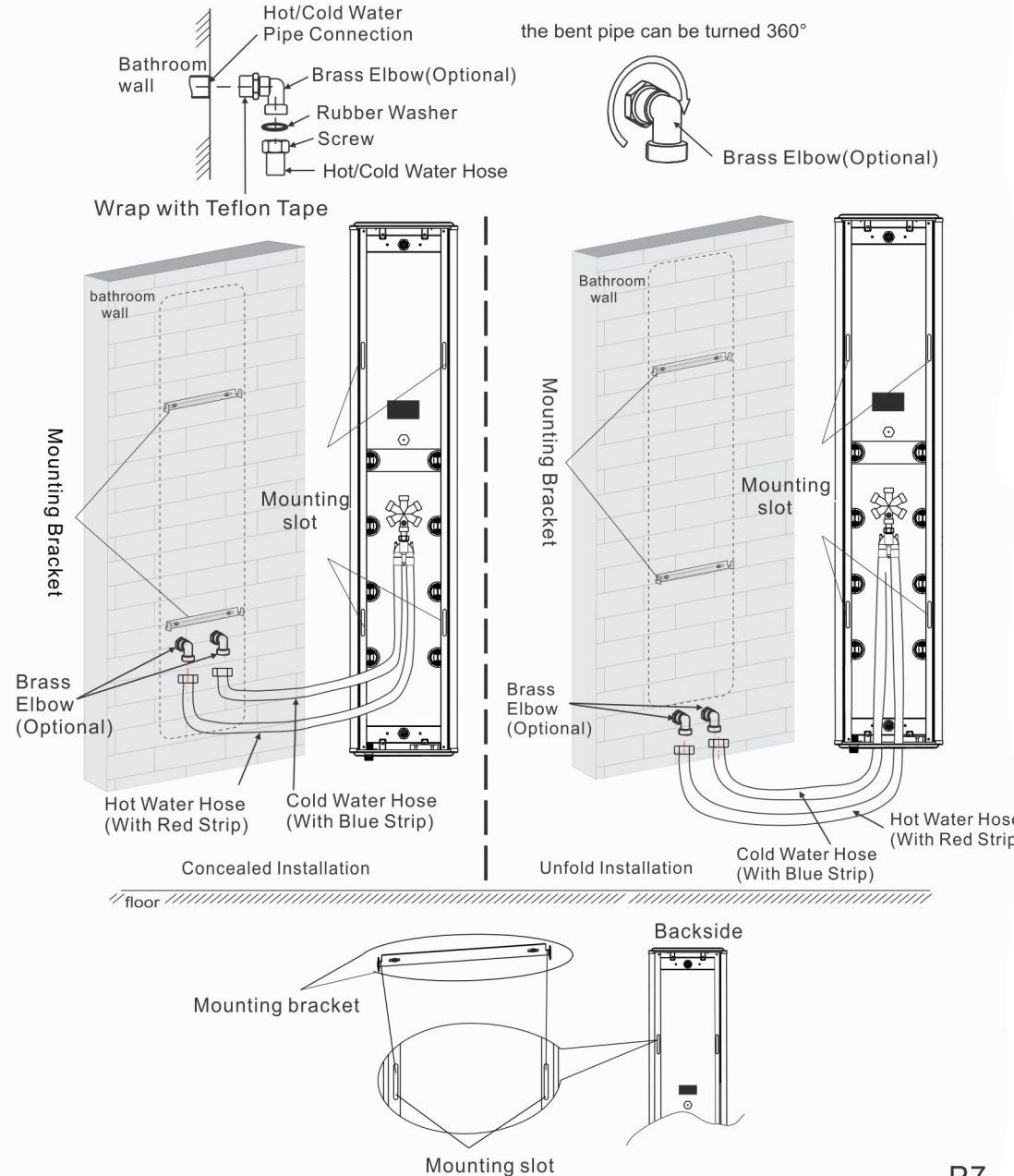
Unfold Installation



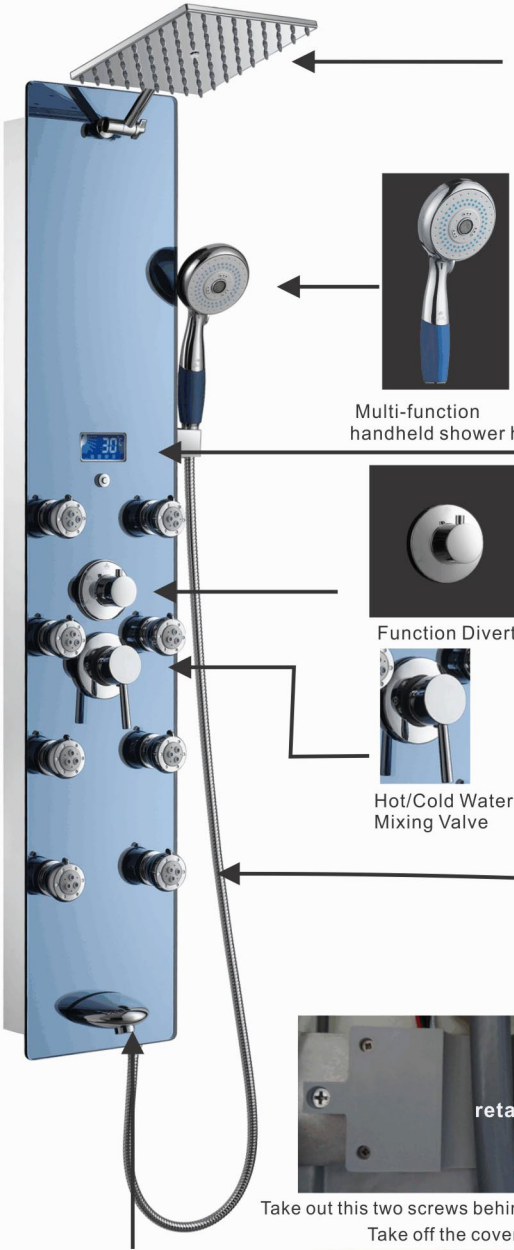
style	787	788	V878
L	650mm	650mm	510mm

5.Connecting and Hanging of Shower Panel Body

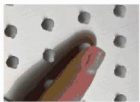
Before connecting, please switch on water supply to flush out the debris(i.e. rust and small particle) inside the water pipe. Failure to do so might cause hoses to be clogged. To install, use Teflon Tape to wrap around the fitting of the water pipe, insert a rubber washer with mesh onto the hoses, and simply connect the 1/2 "hoses with a 1/2" pipe fitting. After connection is done, switch on the water to make sure no leaking occurs. To mount the shower panel, screw the mounting bracket onto the wall, and simply mount the shower panel onto the mounting bracket. When screwing the mounting bracket, please make sure that it is being screwed on a wood stud behind the wall to provide sufficient strength to hold the shower panel.(See Picture Below)



6.Install Glass Shelf



Rainfall Shower Head



Simply wipe the rubber nozzle to prevent clogging



Multi-function handheld shower head



Function Diverter



Hot/Cold Water Mixing Valve

Temperature Display
Display can be powered by hydro when there is water running or be powered by 2 AA batteries.



0 to 32 Degree Celsius
Display shows Blue color.



32 to 40 Degree Celsius
Display shows Red/orange color.

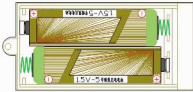


Above 40 Degree Celsius
Display shows Red/orange color with flashes.



On/Off button for display
(only when battery is used)

Screw



Battery slot is located underneath the shower panel and it can be accessed from the outside without unmounting the shower panel. Two AA batteries are needed for the battery slot.

3 Function jet



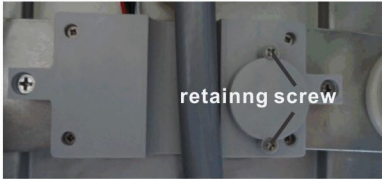
Massge Function



Mist Function



Mist&Massge Function



retaining screw

Take out this two screws behind the indicator(as above)
Take off the cover(as above)



Tub spout



Switch 2 to ON for Fahrenheit
(Button 1 is for language)



Turn off this two switches to "1"&"2"
indicator shows, °C

*Battery will need to be removed when switching the button
**When screwing the cover back on to the display ,please
make sure not to over tight the screw ,or it might break the cover