



OLYMPIA FAUCETS, INC.

Interchange City Distribution Center #20
1277 Heil Quaker Boulevard
La Vergne, TN 37086
(888) 772-7701
www.olympiafaucets.com

Model Number: P-2370T, P-2371T, P-2372T,
P-2374T, P-2375T (CP, BN)

Warnings and Notes:

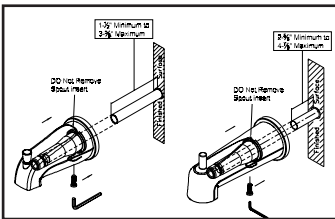
Check with local plumbing code requirements before installation.

This product should be installed by a local listed plumber.

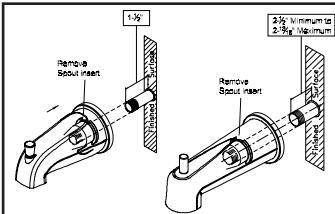
Do not use plumbers putty on threads.

Installation Steps:

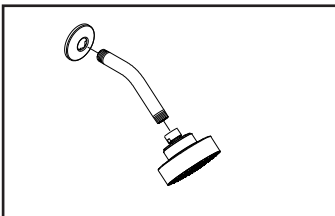
Single Handle Tub And Shower Trim Set



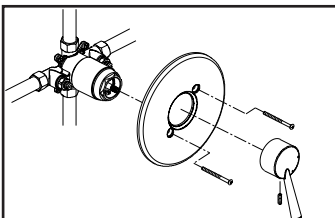
(1) For slip-fit Installation: The 1/2" nominal copper tube must be cut with a minimum length of 1-1/2" to a maximum length of 3-5/8" and 2-5/8" minimum length to a maximum length of 4-7/8" for 7" extended tub spout from finished face of tub or wall. Then end of copper tube should be chamfered free of any burrs to prevent cutting or nicking o-ring inside the spout. The outside surface may be sanded free from nicks and scratches. Press and twist the spout over copper tube flush with the finished tub or wall surface. Tighten the set screw, but do not overtighten.



(2) For IPS Installation:- The 1/2" threaded pipe nipple must be kept with a minimum length 1-1/8" to maximum length of 1-3/8" and minimum length 2-1/2" to maximum length of 2-13/16" for 7" extended tub spout from finished face of tub or wall. Remove the octagonal nut inside the spout by using nose pliers. Apply sealant tape at the threaded connection. Screw tub spout onto the threaded pipe nipple and tighten by strap wrench.



3) Caution: To avoid plugging the showerhead spray outlet use sealant tape on the shower arm threads. Remove temporary nipple from the shower elbow. Use silicon to caulk the back of the shower arm flange. Slide the shower arm flange over the shower arm. Apply the sealant tape on the both threaded ends of shower arm and install the shower arm to the shower elbow. Carefully tighten with a clean strap wrench. Press the shower arm flange against the finished wall. Flush out the system. Thread the shower-head to the shower arm.



(4) Slide the face plate on the valve. Secure the face plate with the help of face plate screws. Use silicon to caulk around the face plate. Tighten the set screw on the bottom of handle with help of 3/32" Allen wrench to secure the handle on the valve.

INSTALLATION

Tools:



Adjustable Wrench



Plumbers Putty



Sealant Tape



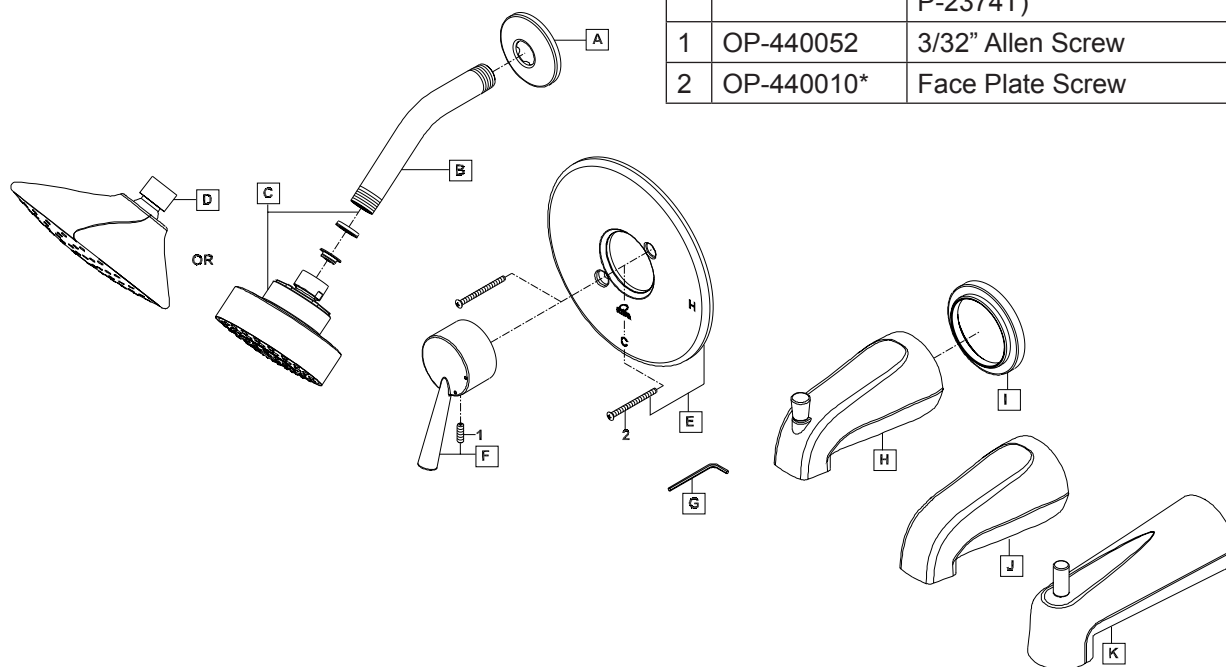
Rags



Exploded Drawing:

* Note: Please specify finish/color when ordering.

	ITEM #	DESCRIPTION
A	OP-640001*	Shower Arm Flange
B	OP-640002*	Shower Arm
C	OP-640038*	Shower Head
C	OP-640039*	1.5 GPM Shower Head
D	OP-640037*	Rain Shower Head (For P-2374T, P-2375T)
E	OP-440051*	Face Plate
F	OP-140011*	Lever Handle
G	OP-490011	3/32" Allen Wrench
H	OP-640007*	Diverter Tub Spout (For P-2370T)
I	OP-640008*	Escutcheon (For P-2370T, P-2371T)
J	OP-640019*	Non Diverter Tub Spout (For P-2371T)
K	OP-640040*	Extended Diverter Tub Spout (For P-2374T)
1	OP-440052	3/32" Allen Screw
2	OP-440010*	Face Plate Screw



For more care information or trouble shooting inquiries about your Olympia product, Please call:
OLYMPIA FAUCETS, INC. (888) 772-7701
 7AM - 8PM EST (4AM to 5PM PST)
www.olympiafaucets.com