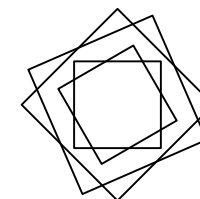
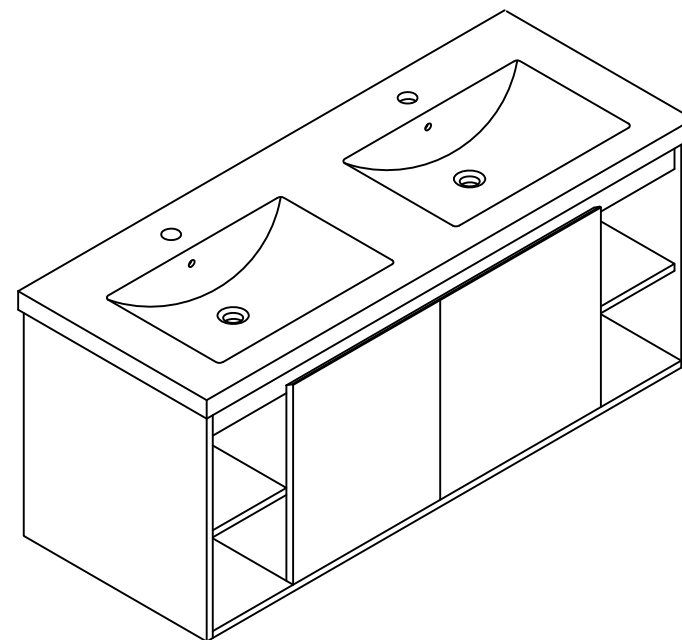


THANKS FOR WATCHING


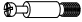



Your feedback is invaluable to us and we would love to hear about your experience. Please take the time to leave us a review.

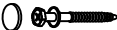
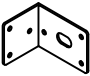







Thank you for shopping with us!

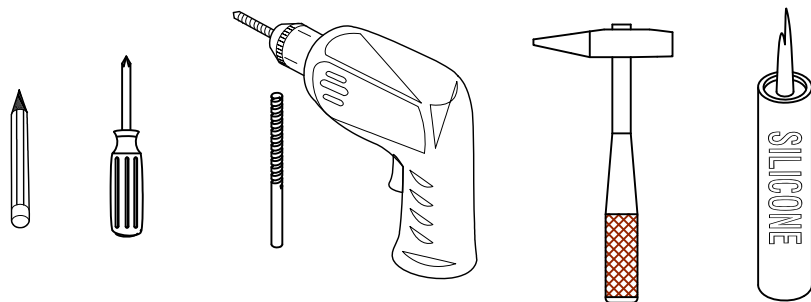
We encourage you to take a few minutes to go through this booklet. It contains important information on installation and care tips to keep your furniture looking as good as new.

Hardware

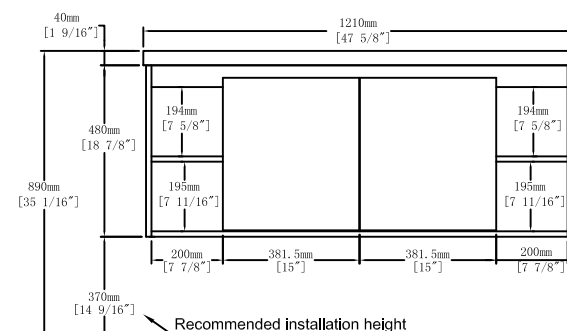
NO.	Draw	QTY
A	 Screws Ø4x14mm	44
B	 Two-in-one connector	45
C	 Two-in-one connector	45
D	 Wood plug	10
E	 Plastic anchor(Ø10mm)	4

NO.	Draw	QTY
F	 Screws for fix on the wall	4
G	 Bracket (53x70x44mm)	2
H	 Bracket (19x19x35mm)	2
I	 Hinges (Full cover)	4
J	 Anti-collision gasket	2
K	 Door stopper	2
L	 Screwdriver	1

Recommended tools



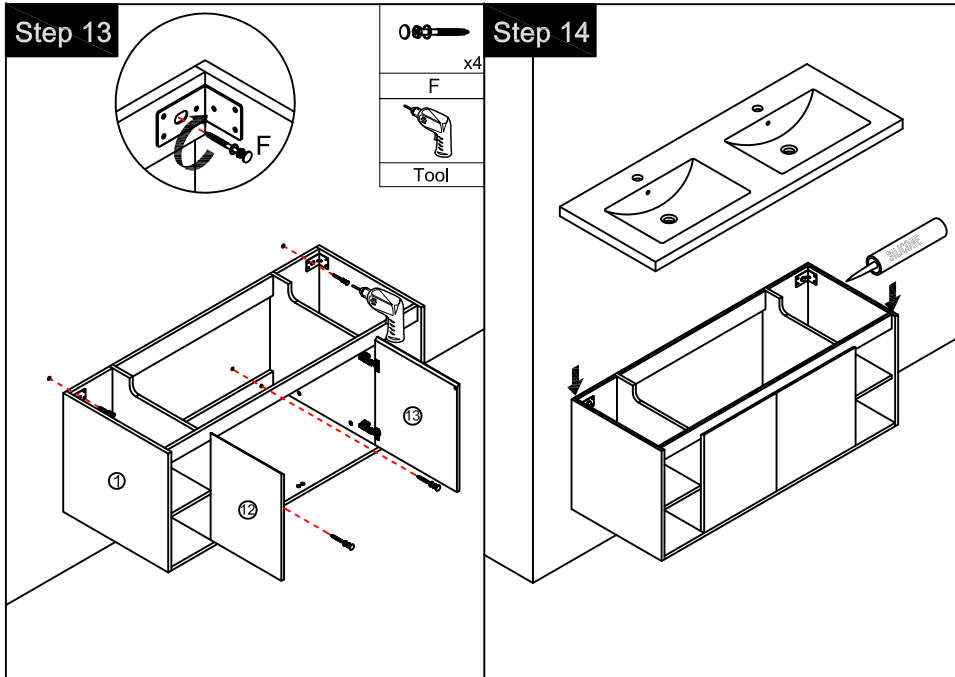
Top View

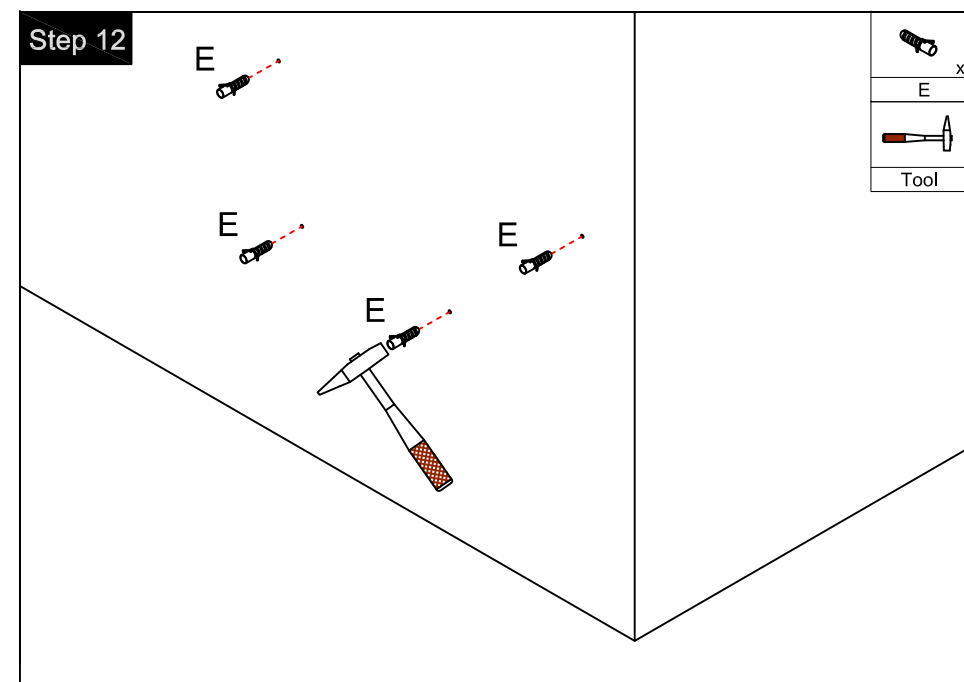
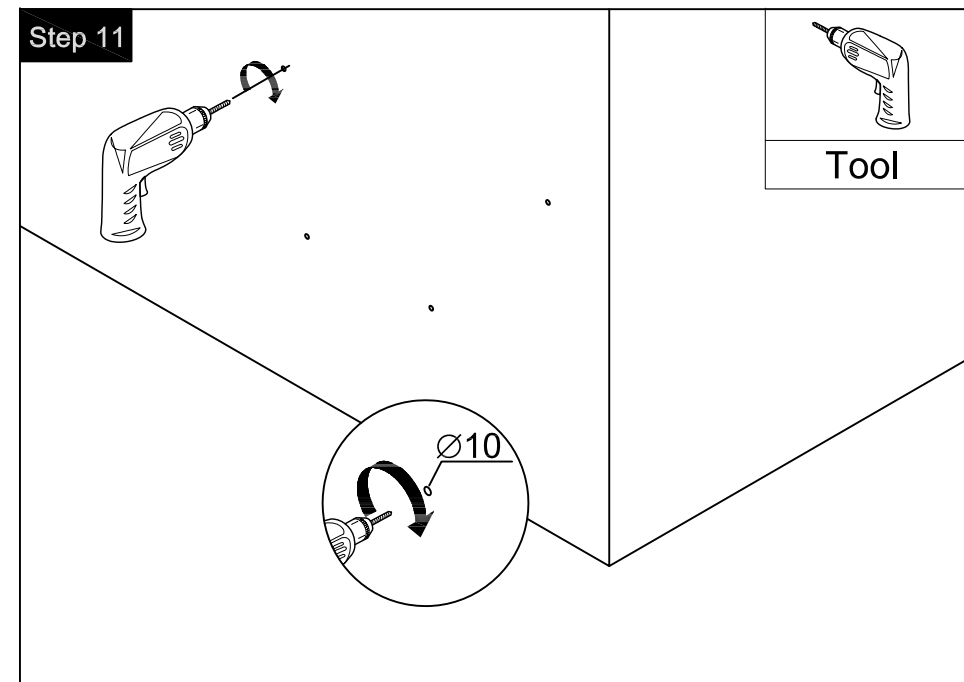
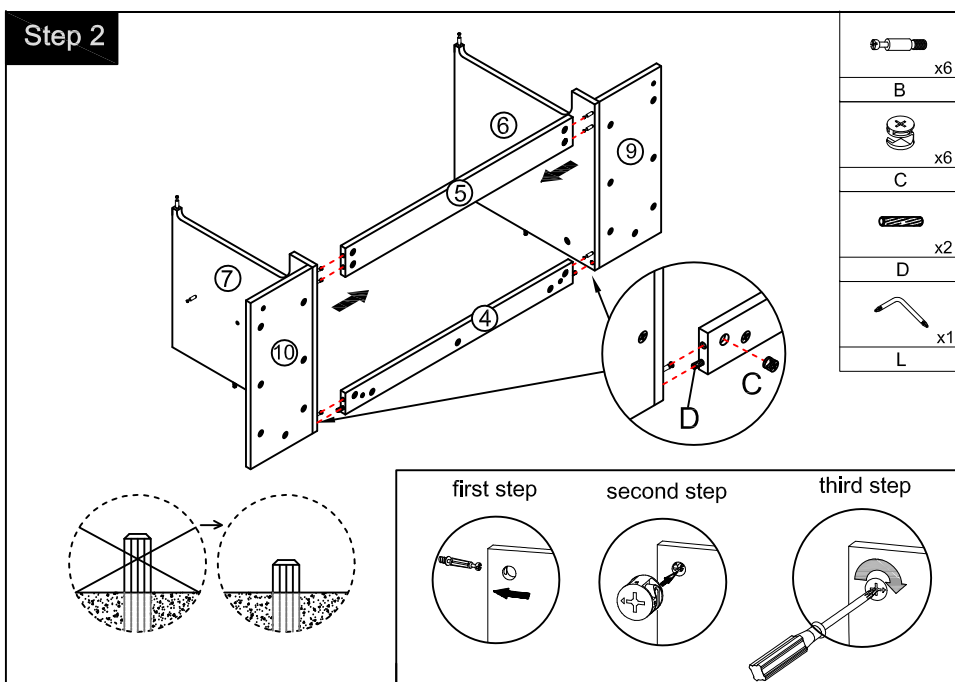
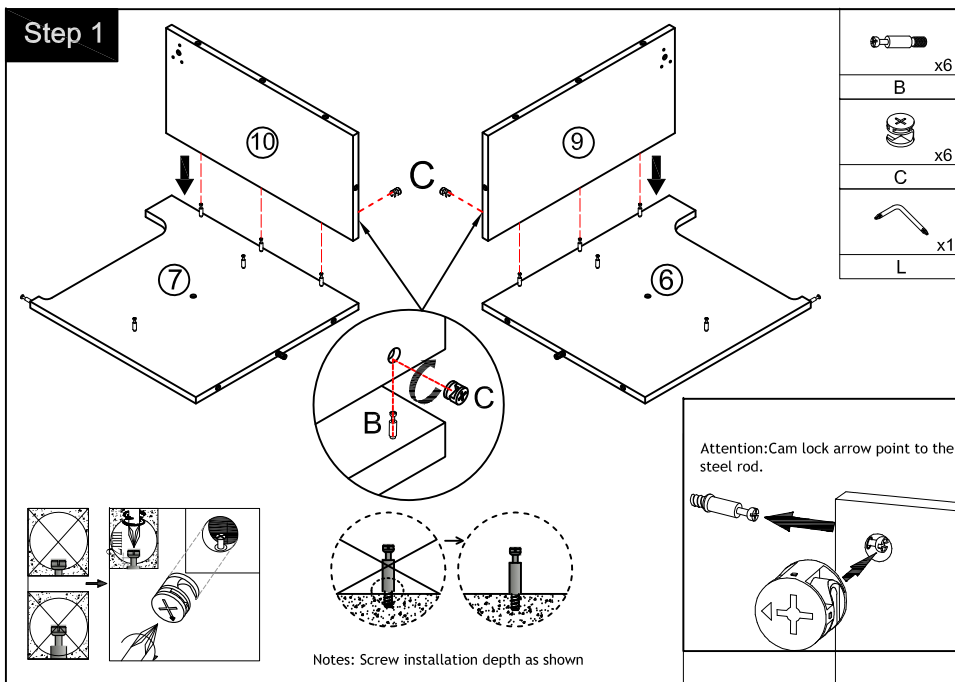


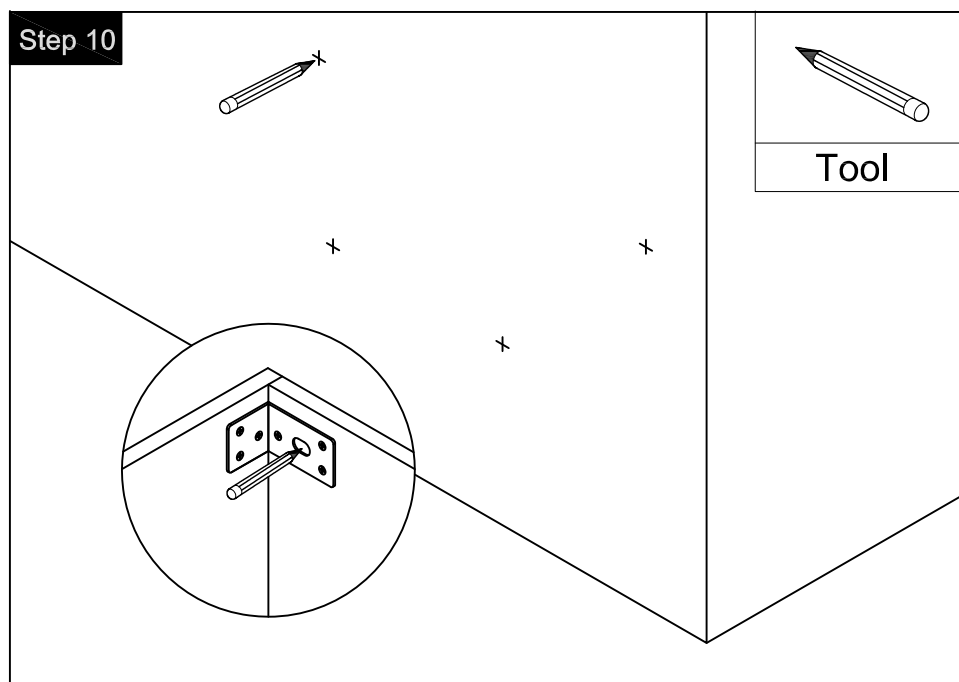
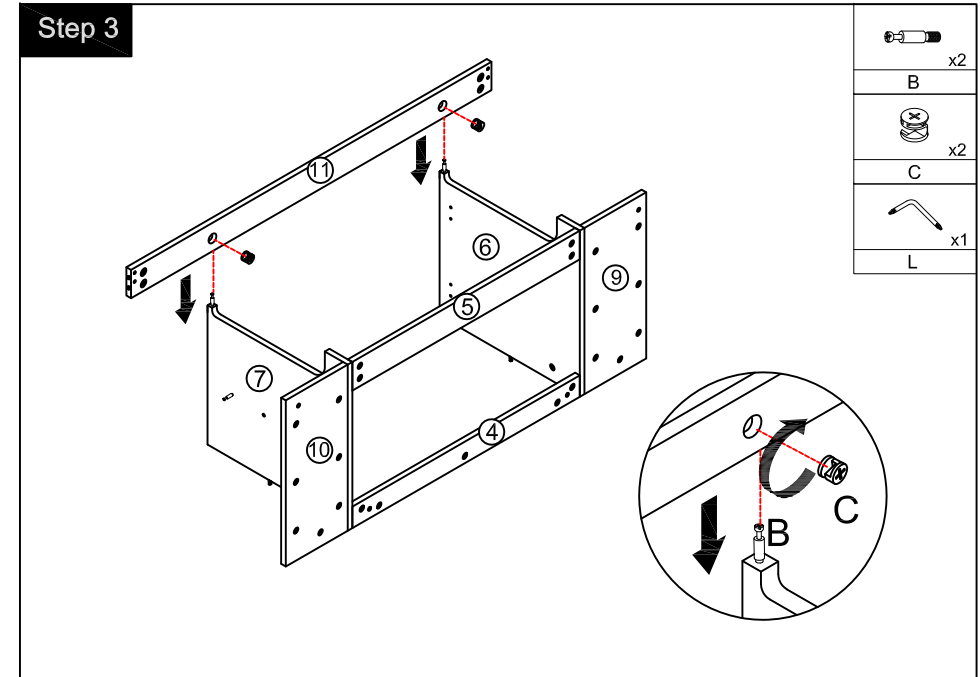
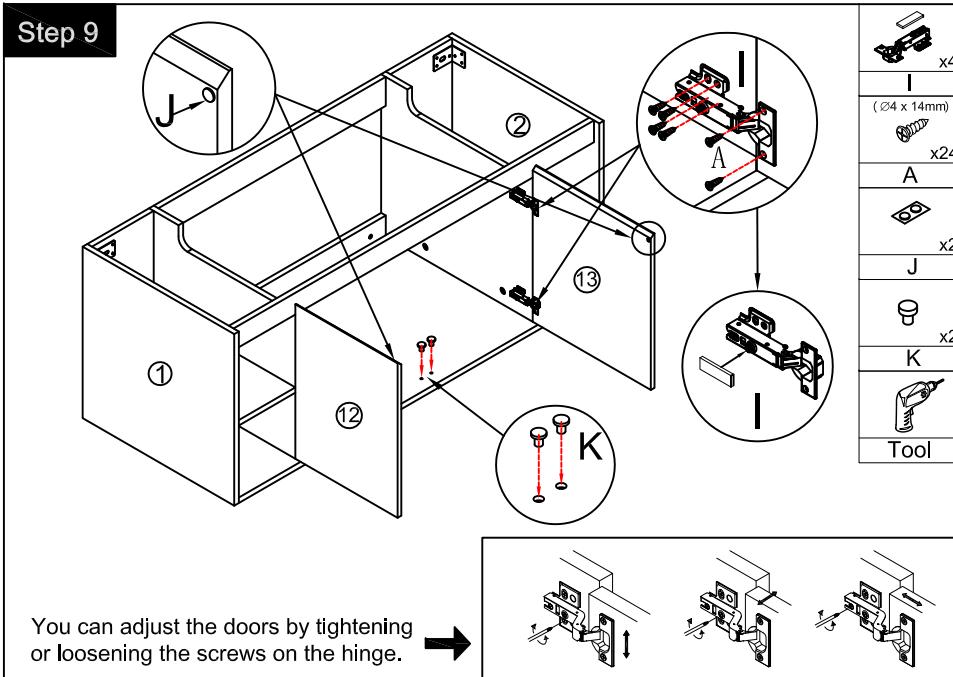
Floor

CARE CLEANING AND MAINTENANCE

- 1.Dust regularly with a soft , dry cloth.
- 2.Avoid the use of all chemicals household cleaners, abrasives, or cleaners that contain lemon, vinegar, or other acids that may damage the finish.
- 3.Excessive exposure to sunlight and extreme changes in temperature and moisture can damage wood furniture.
- 4.The sink top is resilient, but care needs to be taken to preserve its appearance.
- 5.Do not place hot appliances, such as curling irons and hot hair dryers directly on the countertop. Wipe spills immediately.

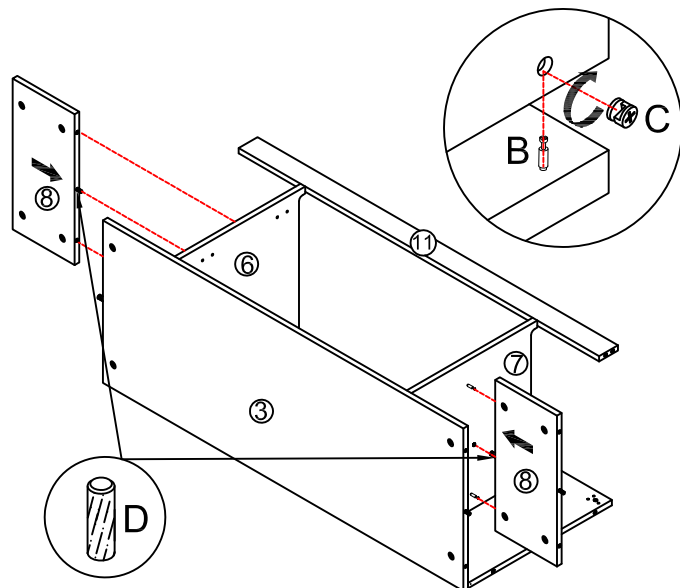






Note: The D parts are used for these two holes

Step 5

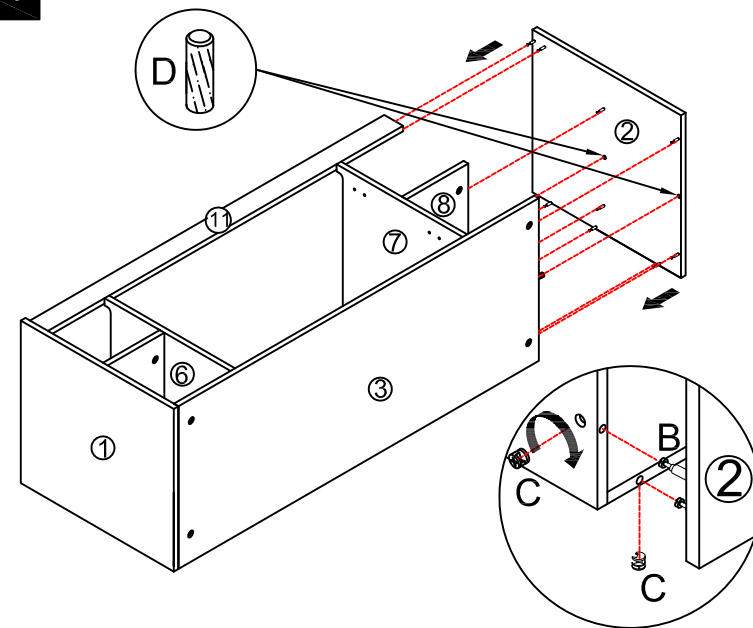


	x4
	x4
	x4
	x2
	x1

Note: The D parts are used for these two holes

Step 7

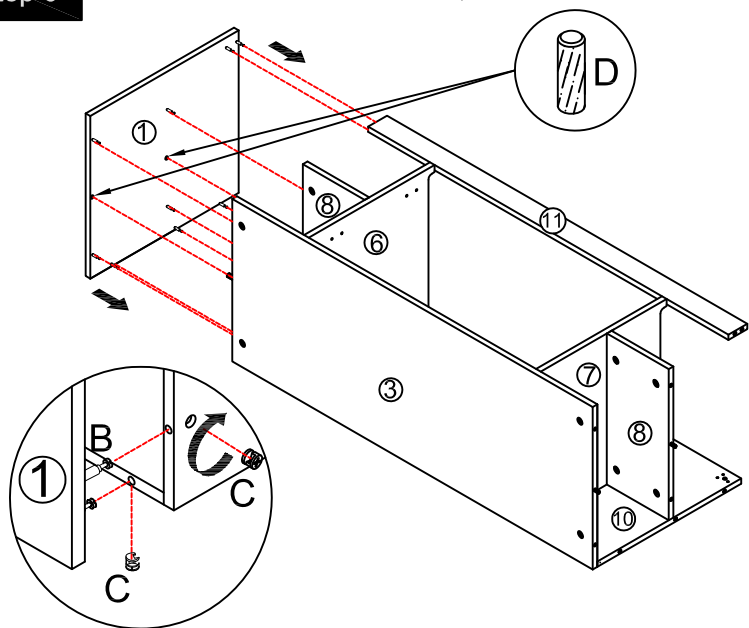
Note: The D parts are used for these two holes



	x9
	x9
	x9
	x2
	x1

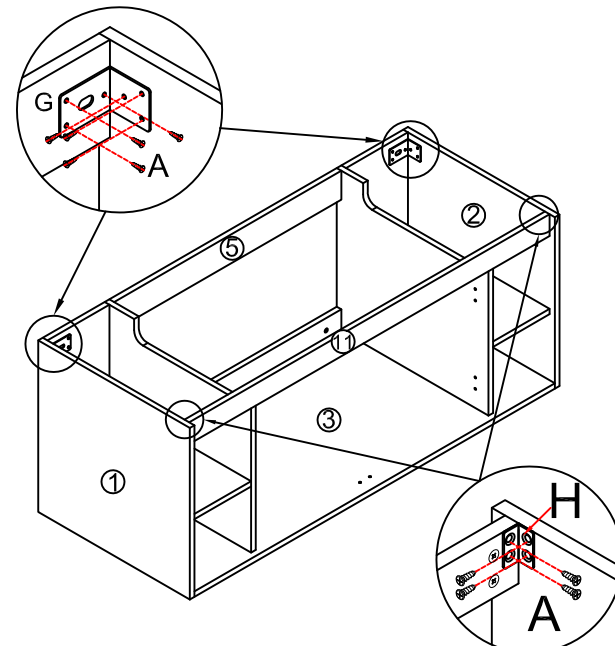
Step 6

Note: The D parts are used for these two holes



	x9
	x9
	x9
	x2
	x1

Step 8



	x2
	x2
	x20