



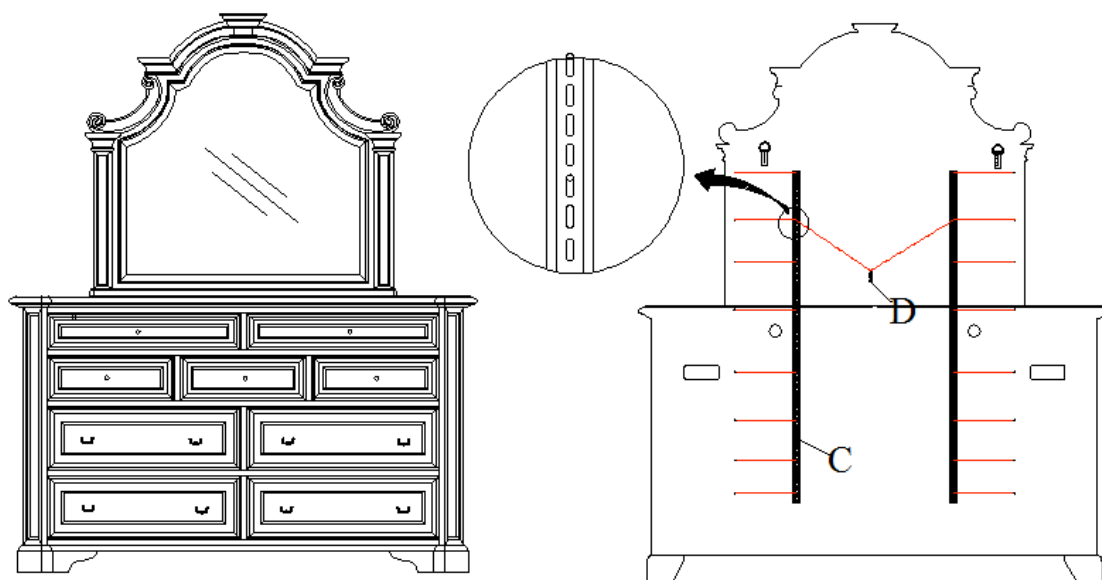
ASSEMBLY INSTRUCTION

Item#: 5403-90009 Shaped Mirror

Item#: 5403-90002 Nine-Drawer Dresser

**** Please make sure you have all parts indicated below prior to assembly.
This mirror is heavy and can best be assembled with the help of two or more persons.**

NO.	PARTS	Q'TY
C	 MENDING PLATE	2PCS
D	 SCREW	16PCS



Assembly Steps:

1. Place mirror on top of dresser. Be sure to position mirror in the middle of top. The back bottom edge of the mirror and the back edge of the top should be flushed.
2. Attach a mending plate (C) at back of mirror and back of dresser. Align holes on mending plate to the pre-drilled holes at the back of dresser and tighten 4pcs of screws (D) through the holes. Tighten another 4 screws (D) at random location through mending plate to mirror frame with care.
3. Repeat step 2 for another mending plate (C).

Caution: Do not over tighten.

Cleaning Instruction: Clean finished parts with a damp cloth using a mild dishwashing liquid and water solution. Polish the finish with soft cloth and an industry recognized furniture polish.