



KITCHEN FAUCET

KF-AZ258CH/BN/ORB/BKM

DESCRIPTION

- Brass construction
- Thread : NPT1/2


FLOW

- Water usage is limited to these maximum flow rates as indicated by the corresponding product markings
- North America: 2.5gpm max (9.5L/min) at 60psi

CARTRIDGE

- Brass cartridge

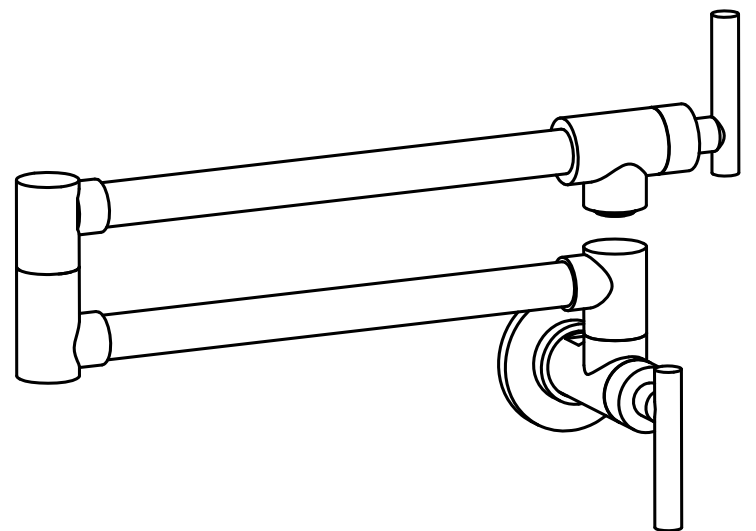
STANDARDS

- Certified to CUPC
- Certified to AB1953
- Certified to NSF/ANSI 61
- **ADA**  for lever handle

WARRANTY

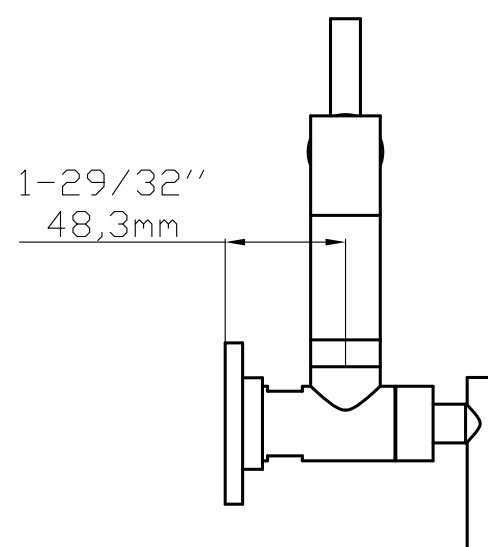
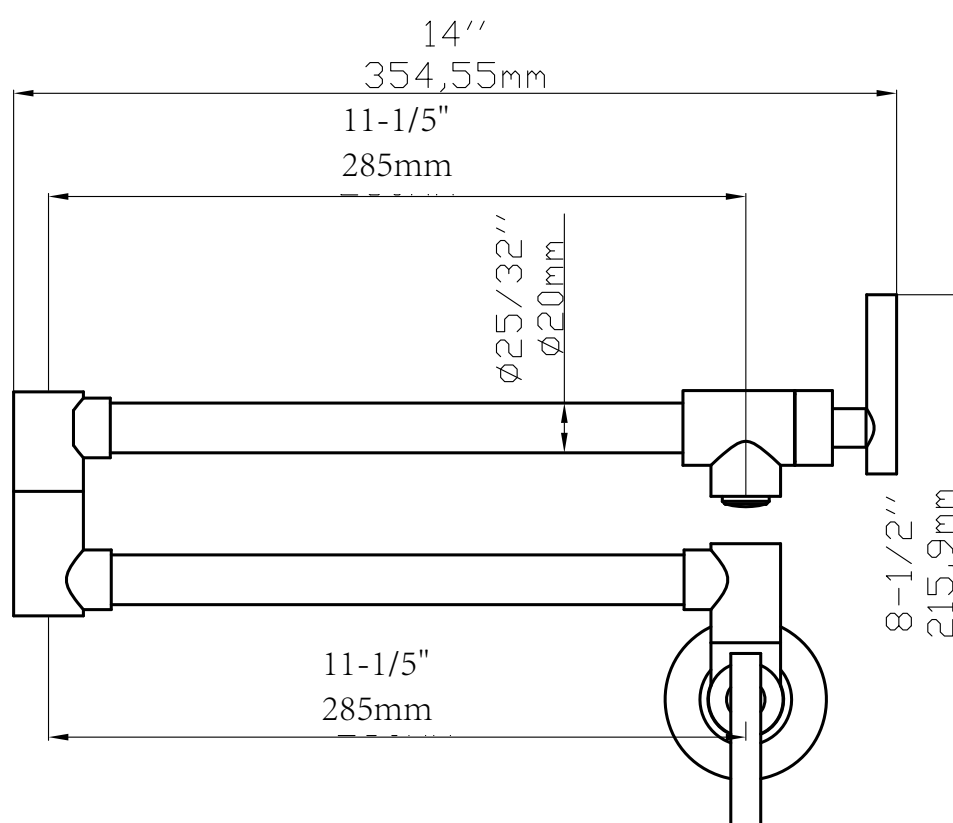
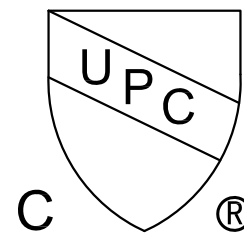
- Lifetime limited warranty against leaks, drips and finish defects to the original consumer purchaser
- 5 year warranty if used in commercial installations

Specifications



Kitchen Faucet

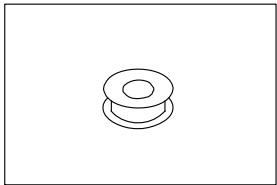
NOTE: THIS FAUCET IS DESIGNED TO BE INSTALLED THRU 1 HOLE, $\Phi 1\text{-}3/8"$ MIN.



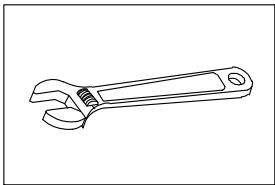
CRITICAL DIMENSIONS

Kitchen Faucet Installation

INSTALLATION MANUAL Tools You Will Need :



Pipe tape



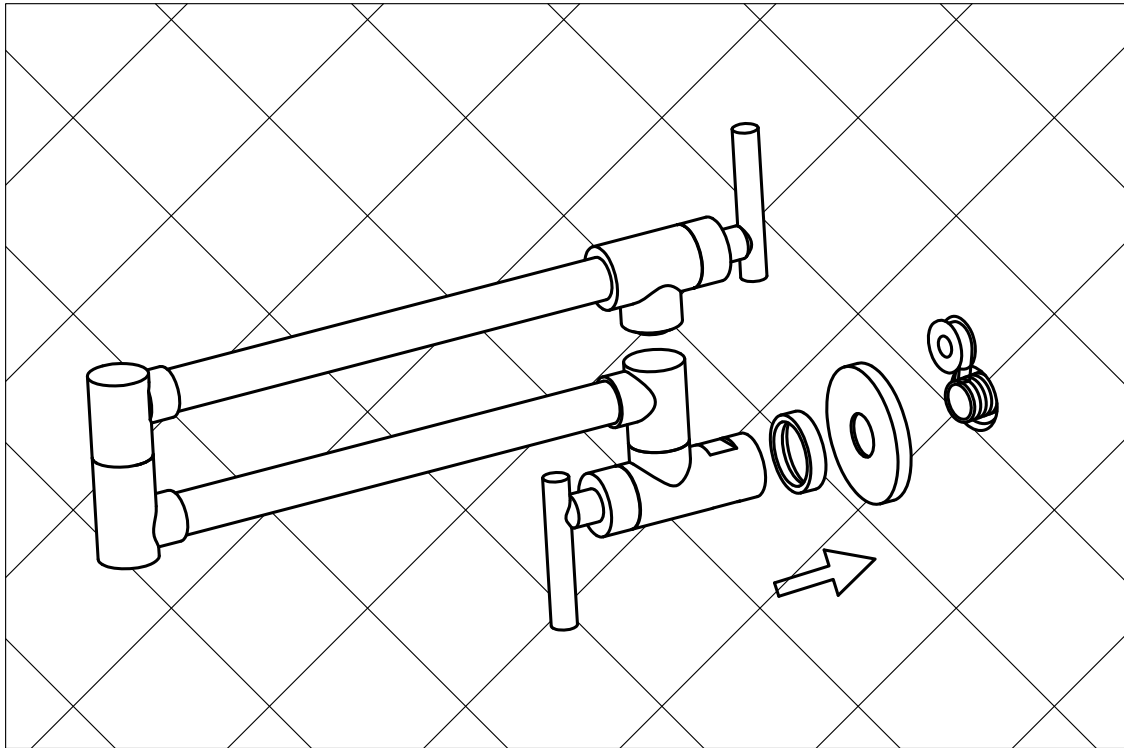
Adjustable wrench

Notes before installation :

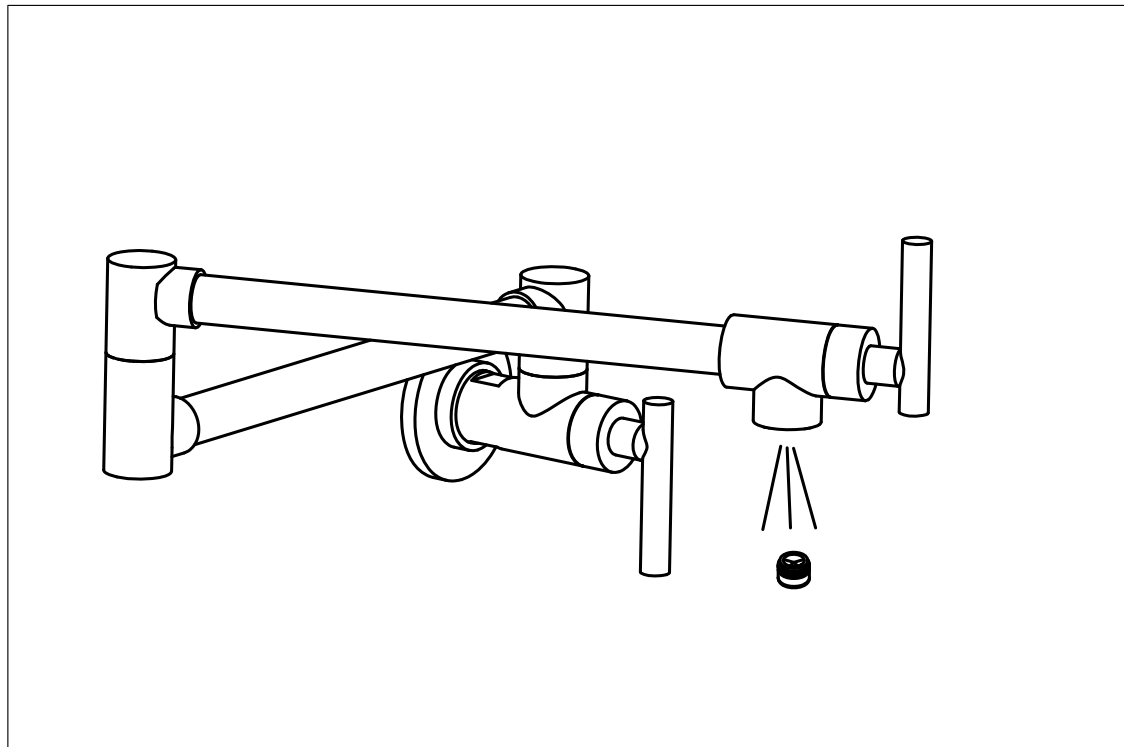
- 1.Please check that all components are present.
- 2.Before installation ensure that all feed lines are clear of debris and on/off valve is present.
- 3.Ensure water pressure is between 20-125 PSI (Includes combination of hot and cold feed lines).
- 4.Pictures in the manual are general in content and may not represent exactly your purchased faucet. If you are having difficulties please contact a professional plumber.
- 5.If you will be away from home for an extended period you should shut off the main water supply.

Daily maintenance

- 1.Use a soft cloth and vinegar to remove hard-water spots.
- 2.Check aerator (if present) regularly for calcium build up are when water stream is not optimum.
- 3.DO NOT use caustic cleaning products as the use will break down finish and will void the product warranty.
- 4.Acceptable cleaners include vinegar or mild non-abrasive liquid detergents.
- 5.If the water pressure appears to be less than optimum remove, inspect, clean or replace aerator.



1.wrap the thread on pipe with the plumber's tape and install the escutcheon on the flange.Then install the faucet on the mounting nipple and push the escutcheon against the wall.



2.Remove the areator,turn on the water ,then flush the faucet and check for the leaks.If ok,then turn off the water and install the areator.