

NEW IN PRODUCTION

Pianta

COLLECTION



MACHINE-MADE FROM 100% POLYPROPYLENE

Like an eclectic collection of works of impressionism art the Pianta collection can't be defined as a whole, but rather by each unique rug within. The bright colors and extraordinary shapes bring lift to each design in the Pianta Collection. Machine-Made in Egypt of 100% Polyester makes the Pianta Collection the perfect complement to any indoor or outdoor space. The durable fibers not only make this collection stain resistant but also tough enough to handle high traffic areas throughout your home.

INDOOR/OUTDOOR USE, UV-STABILIZED, FADE & HEAT RESISTANT
MACHINE-MADE FROM 100% POLYPROPYLENE IN EGYPT
OPEN BACKED, LIGHT WEIGHT AND EASY TO MOVE

1'11" x 3'7"
2'2" x 7'10"

3'11" x 5'7"
5'3" x 7'6"
5'3" x 5'3" RD

7'10" x 7'10" RD
7'10" x 10'10"



PTA01-91 | Teal



PTA02-91 | Teal



PTA03-86 | Multi



PTA03-91 | Teal



PTA04-22 | Navy



PTA05-86 | Multi



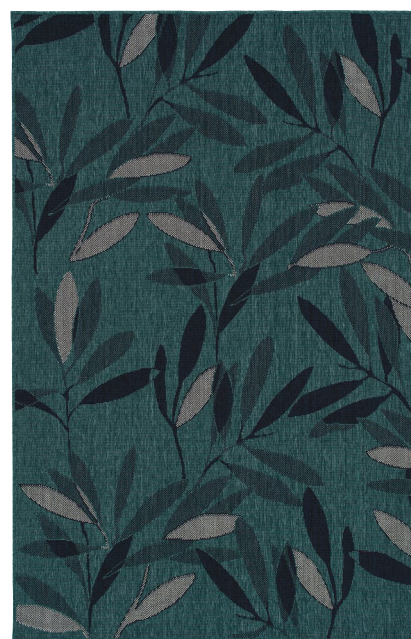
PTA06-25 | Red



PTA06-91 | Teal



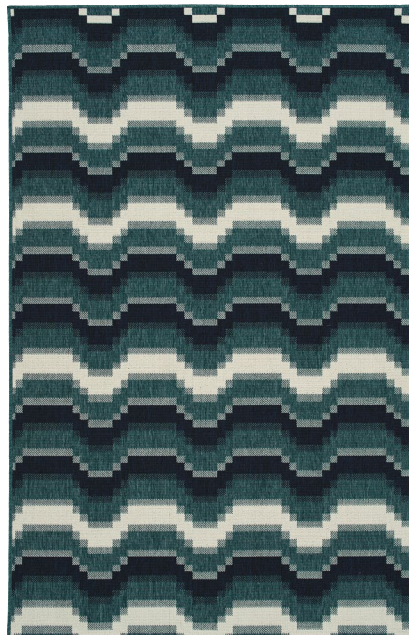
PTA07-01 | Ivory



PTA07-91 | Teal



PTA08-25 | Red



PTA08-91 | Teal



PTA09-91 | Teal