

OXFORD GARDEN® EILAND Club Chair

EDCCT112

FEATURES

- Lightweight yet sturdy, even in windy conditions
- Open weave of composite cord creates visual interest and a comfortable seat
- Arrives fully assembled
- Stackable for convenient storage
- Low-maintenance and ideal for outdoor applications
- Leg end caps provide protection against marring and scratching of surfaces
- Optional seat pad has quick-dry construction with a waterproof bag encasing the foam core and a vented bottom to allow for drainage

MATERIALS

Powder-coated aluminum is durable and lightweight. Its rustproof nature ensures furniture will remain beautiful over its lifetime. Durable and easy to maintain, composite cord is PVC coated polyester thread woven into a cord that is ideally suited for the outdoor environment.

CONSTRUCTION

Welded aluminum

HARDWARE

N/A

SHIPPING

Ships via small parcel

ASSEMBLY

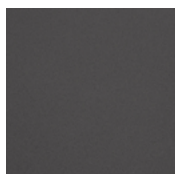
No assembly required



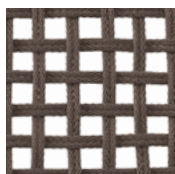
Seat Height	Assemb. Width	Assemb. Depth	Assemb. Height	Assemb. Weight Lbs.
15.25"	25.5"	26.5"	30"	15
Carton # of Boxes	Carton Width	Carton Depth	Carton Height	Carton Weight Lbs.
1	29"	38"	40"	① 25 ② 41

① ② Indicates weight for packs of ONE or TWO.

FRAME

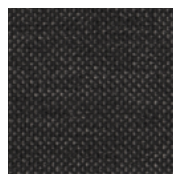


CARBON
POWDER COATED
ALUMINUM C



MOCHA
COMPOSITE
CORD T112

QUICK SHIP CUSHION FABRIC



PEPPER
SOLUTION-DYED
OLEFIN PR



Chair pads also available in custom fabric or Customer's Own Material. Pricing, minimum order quantities, and lead times will vary; please call for more information.

For Quick Ship or Extended Lead Time SKU status, please call 877-866-3331 or email sales@oxfordgarden.com.