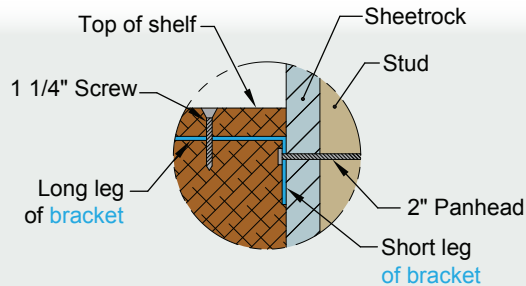


Hidden Bracket



TOOL LIST

- Phillips screwdriver/bit
- Pencil and Level
- Drill
- 1/4" bit for masonry
- Drill bit 1/8" and 3/16"
- Stud finder is helpful

NOTE Thin brick / stone / veneers / tile.

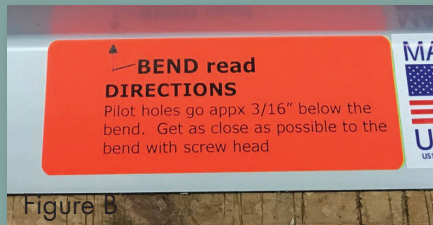
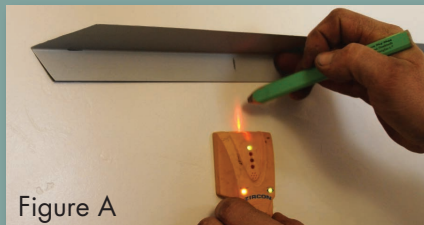
Drill 1/4" hole thru wall board to the studs behind the veneer. The screws must penetrate the studs a minimum of 1 1/2". If veneer is over masonry, anchors must be into the concrete block or wall behind the veneer. Screw length may vary and must be purchased by customer. Contact us if you require assistance.

Installation Directions

Recommended weight rating: 15lb. per screw installed into stud - 5lb. per anchor. Go to : <https://www.youtube.com/watch?v=c3by-3a8RFc> for heavier hollow wall fastener applications.

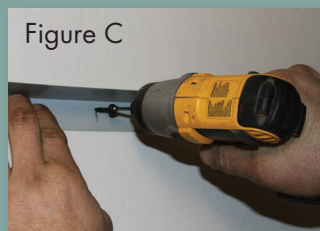
1

Find the studs in your wall and mark them (Figure A). Make corresponding marks on the bracket toward the bend line.



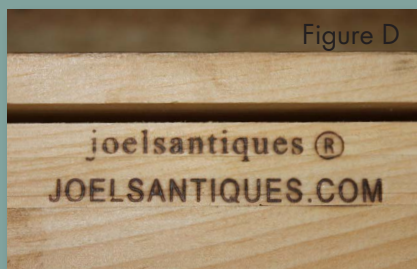
2

Screw the bracket to the wall, **MAKING SURE YOU HIT THE STUDS**. Use a 2" pan head screw. To ease installation of screws, pre-drill a 1/8" diameter hole in the studs, especially if you are using a hand screw driver. **If bracket warps or twists a screw may have been overtightened. If this happens it is usually due to a wall not being flat. Remedy: loosen the screw that is over tightened or too deep.** (Figure C).



3

There is a corresponding saw cut groove (Figure D) in the back of the mantel or shelf. Slide the mantel on (Figure E) and **push it tight to the wall**. Install supplied 1 1/4" or 1 5/8" screws into the countersunk holes in the top (Figure F), while pushing it tight to the wall. The screws will go through the top of the shelf in pilot holes, through the metal bracket and into the wood below. (See Figure F) Do not over-tighten the screws. They should be flush with the top of the shelf when installed properly. (See Figure G)



This is a very strong and sturdy mounting system when done properly. TO SEE HOW STRONG THE MOUNTING IS, go to joelsantiques.com. See a picture of a 75lb., 91"W x 11" D x 5" H shelf with 210lb. standing on it. Go to metal bracket mounting.



[HTTPS://WWW.YOUTUBE.COM/WATCH?V=JG6VMKLL2J4](https://www.youtube.com/watch?v=JG6VMKLL2J4)

**IF YOU HAVE ANY ISSUES OR QUESTIONS
PLEASE CALL OR EMAIL.**