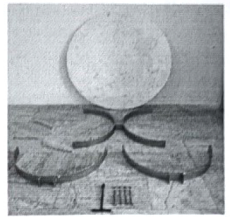
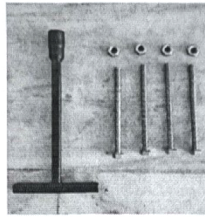


ASSEMBLY INSTRUCTION

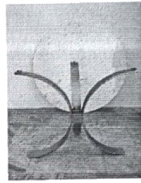
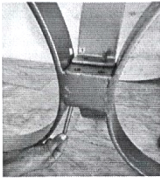
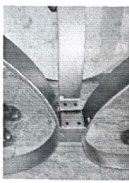
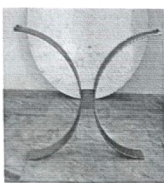
ITEM CODE - 59002005B

PARTS INCLUDED

1. MARBLE TOP
2. 3 IRON LEGS
3. 1 SPANNER
4. 4 BIG IRON NUTS AND SCREWS

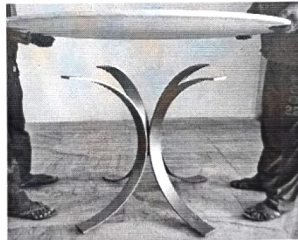
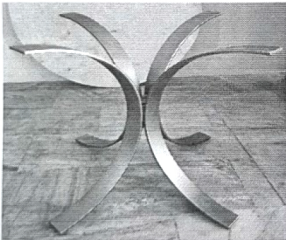


1. Attach the iron legs to the base as shown in the picture 1 by 1 & tighten the screws with the help of allen key.



2. After attaching both legs make sure they are fixed firmly and not shaking.

3. Overturn the iron base carefully and place the marble top as shown below in the picture



Now your product is ready for use enjoy.