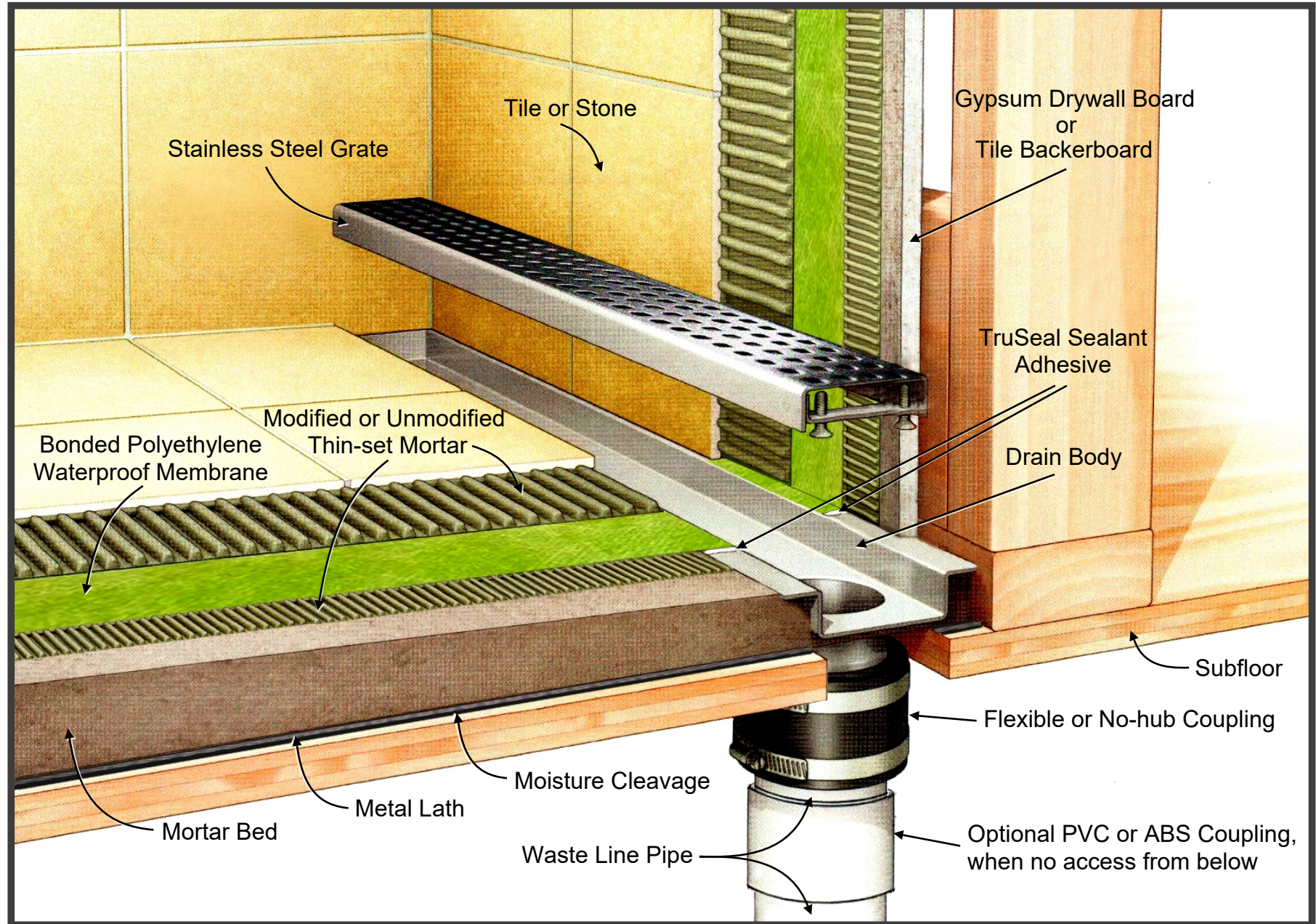
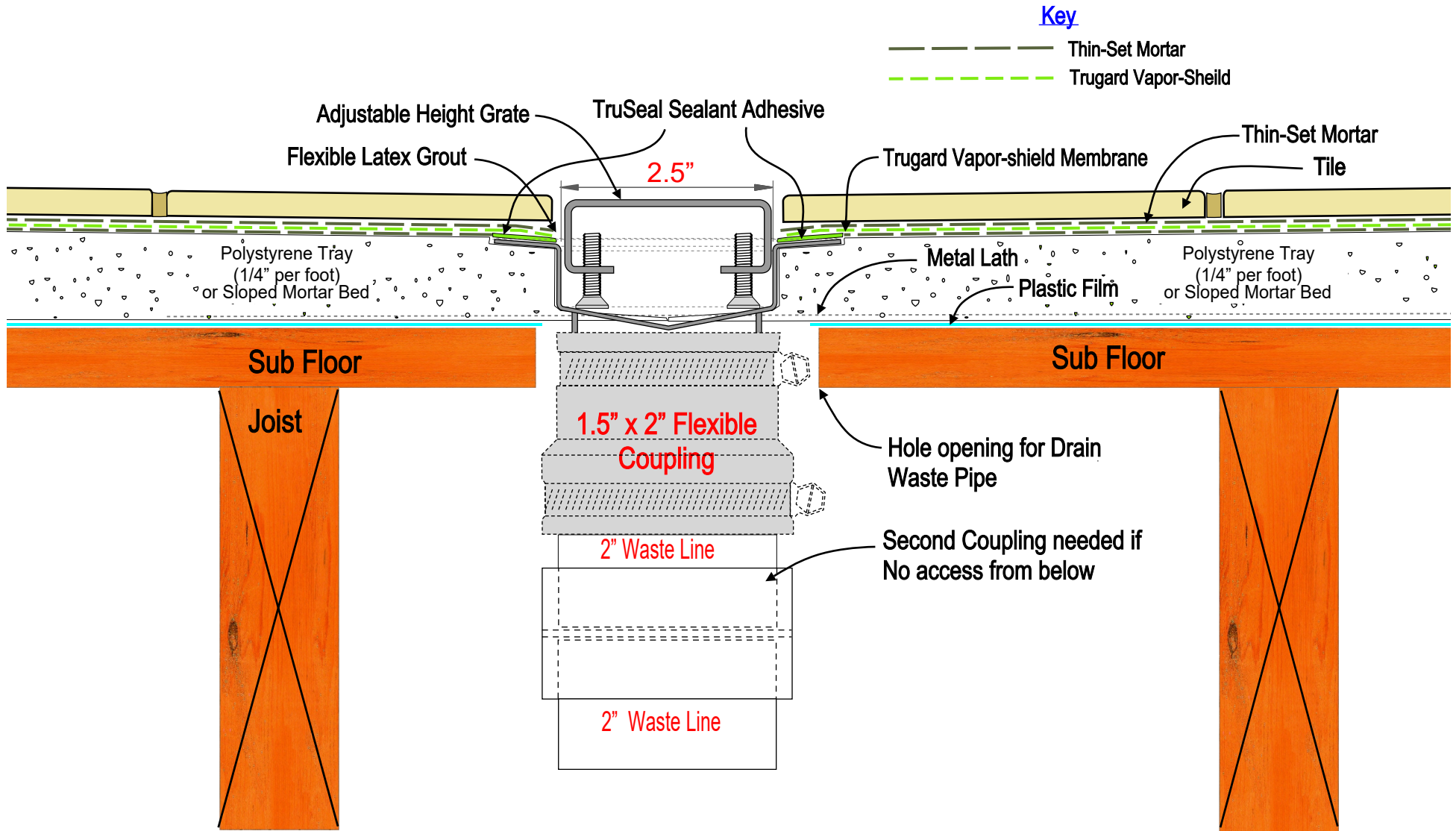


## TRU-LINE LINEAR DRAIN - Layers Illustration for Installation on Wood Floors with Mortar Bed



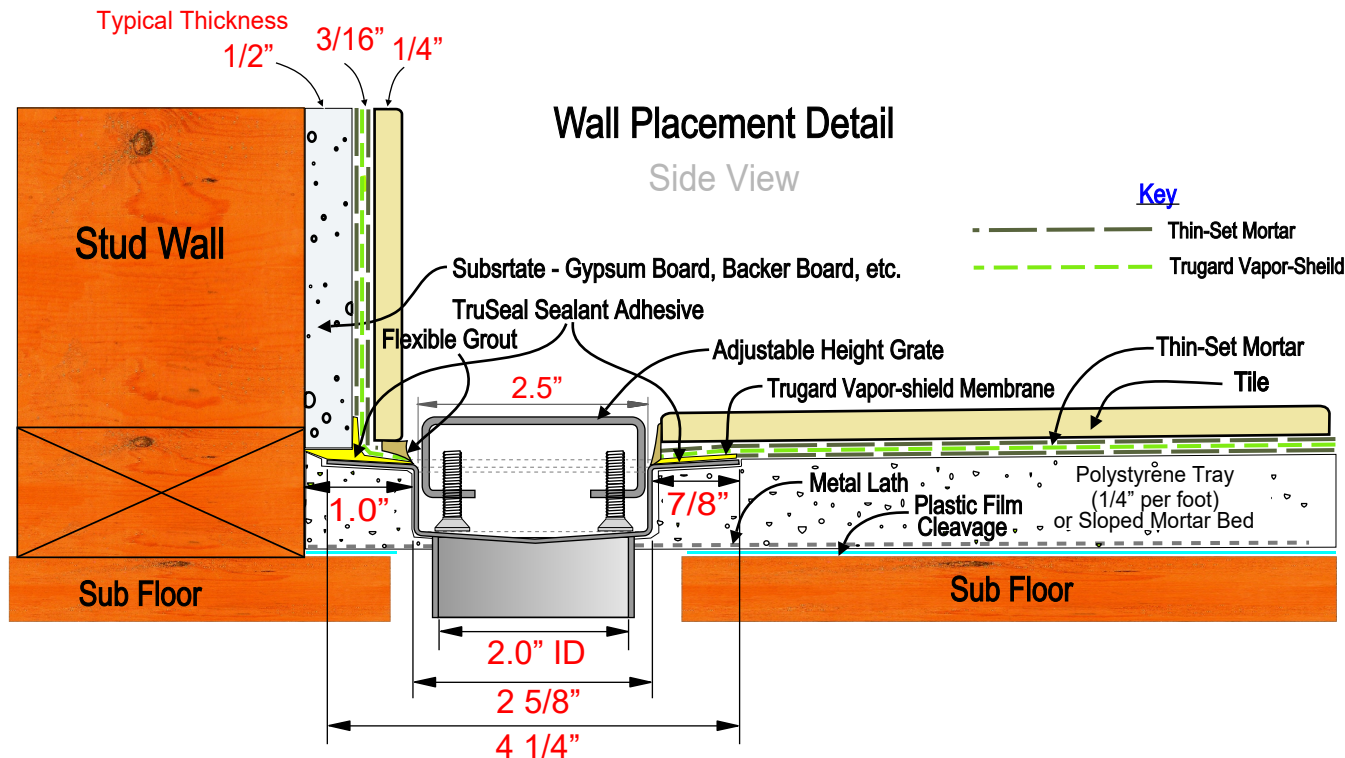
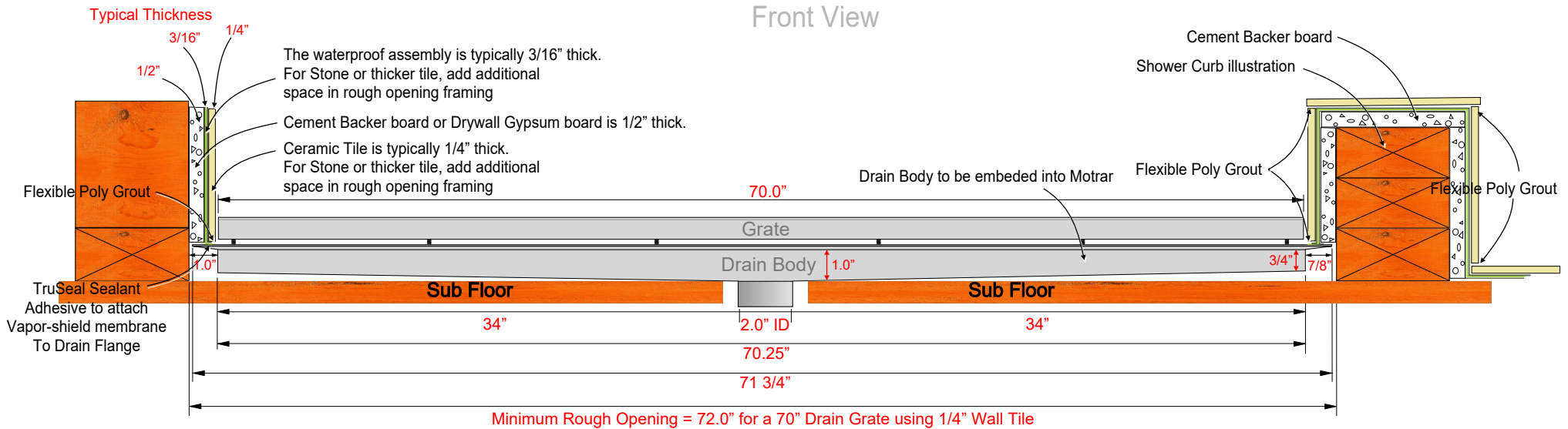


# Intermediate Placement Detail



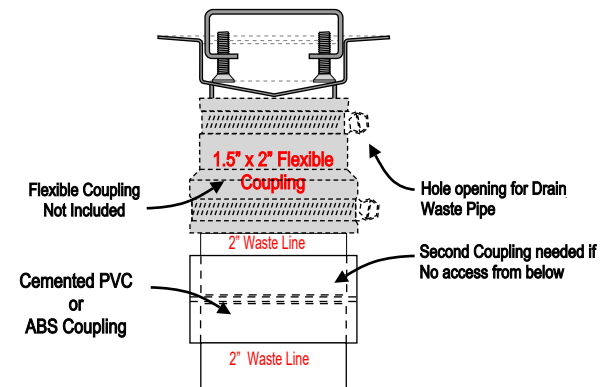
# 72" Truline Linear Drain Framing Detail Drawing

Front View



Sloped Mortar Bed  
(1/4" per foot)

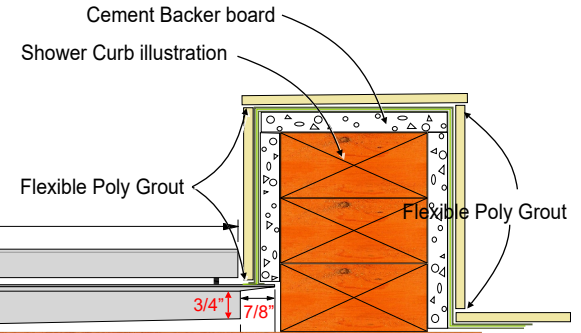
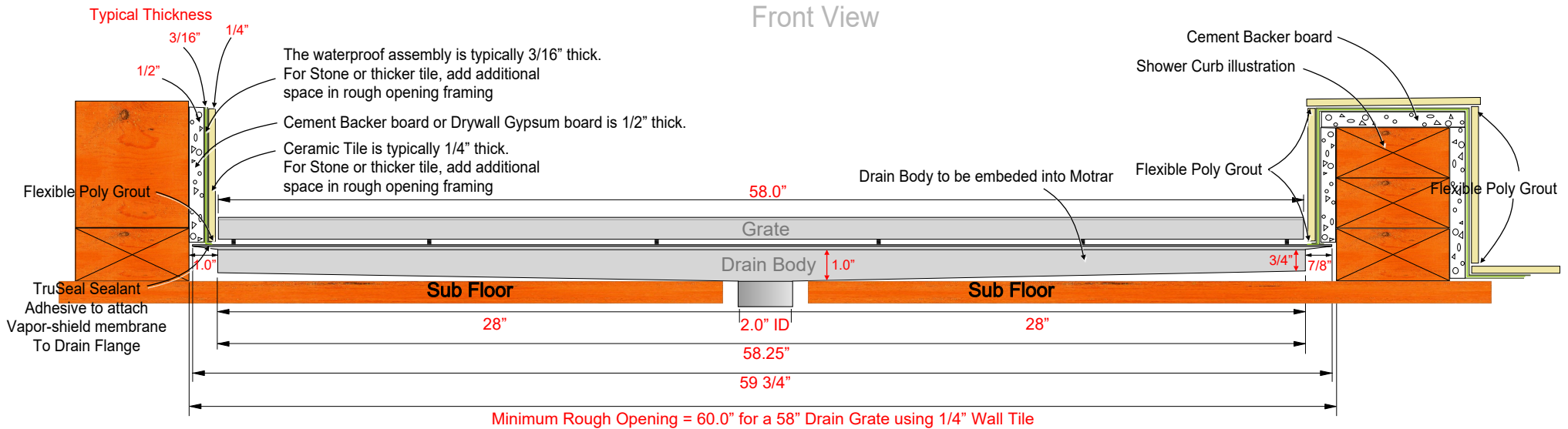
## Drain Connection



**Note:** To determine the framing rough opening size, add one inch to the length or width of the drain body, if a one quarter inch thick tile is being used. If the tile or stone is thicker than the 1/4" and the additional thickness of the tile to the 1 inch distance normally used to determine the rough opening size. So for example, for the rough opening for a 70 inch linear drain, the rough opening would need to be 72 inches, when 1/4" tile is being used.

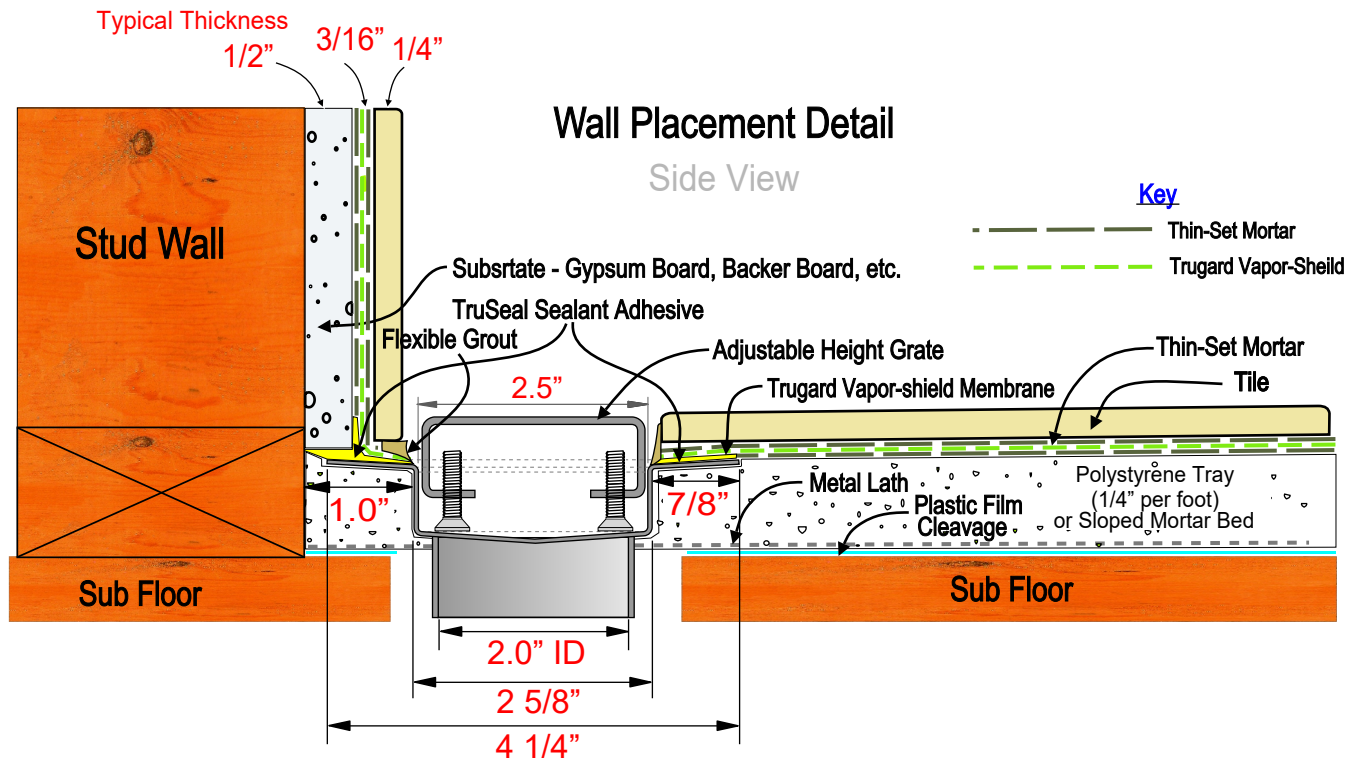
# 60" Truline Linear Drain 58" Grate Framing Detail Drawing

Front View



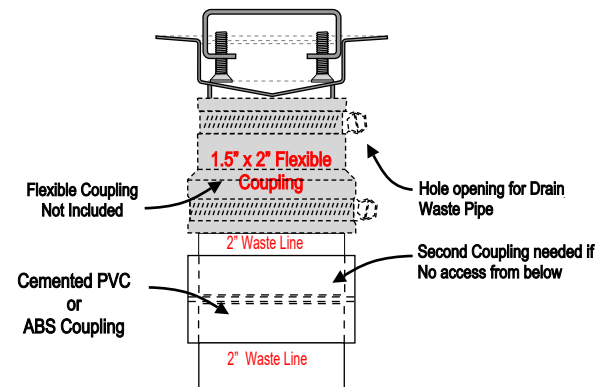
## Wall Placement Detail

Side View



Sloped Mortar Bed  
(1/4" per foot)

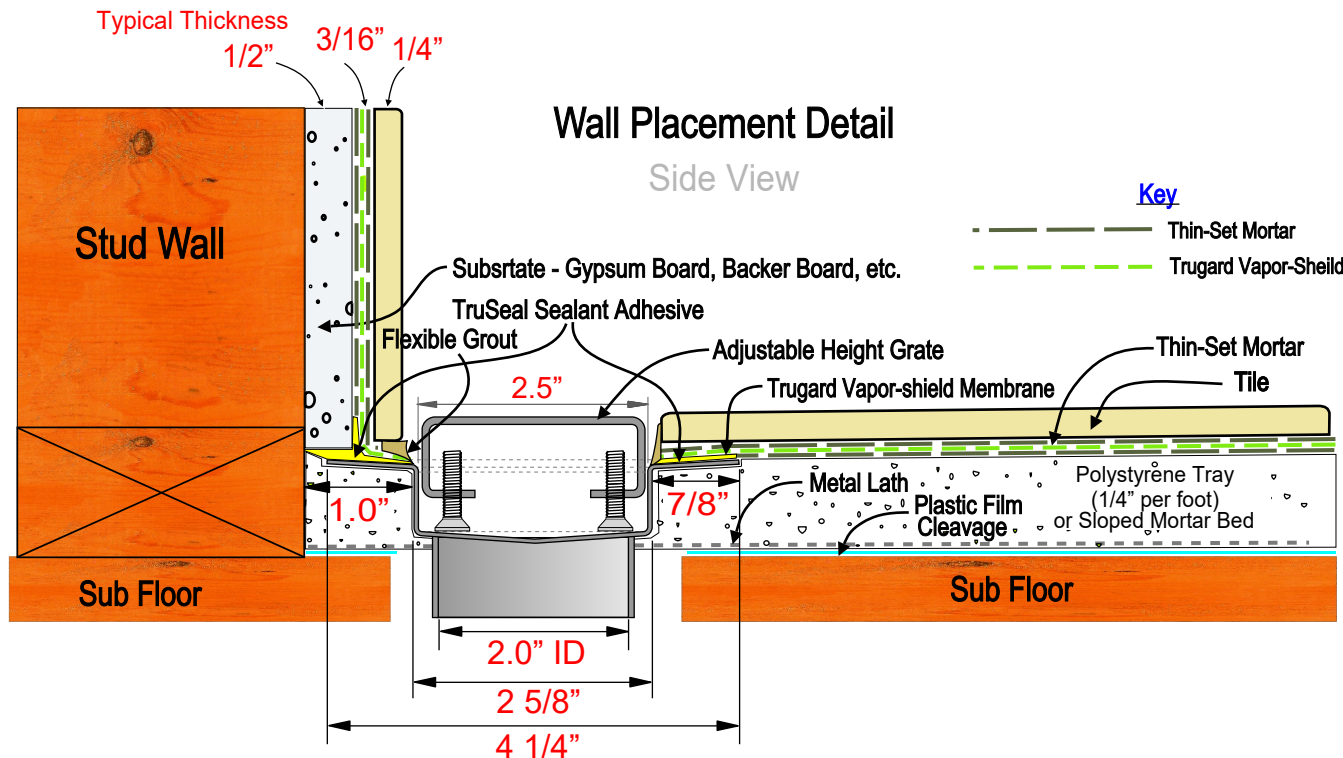
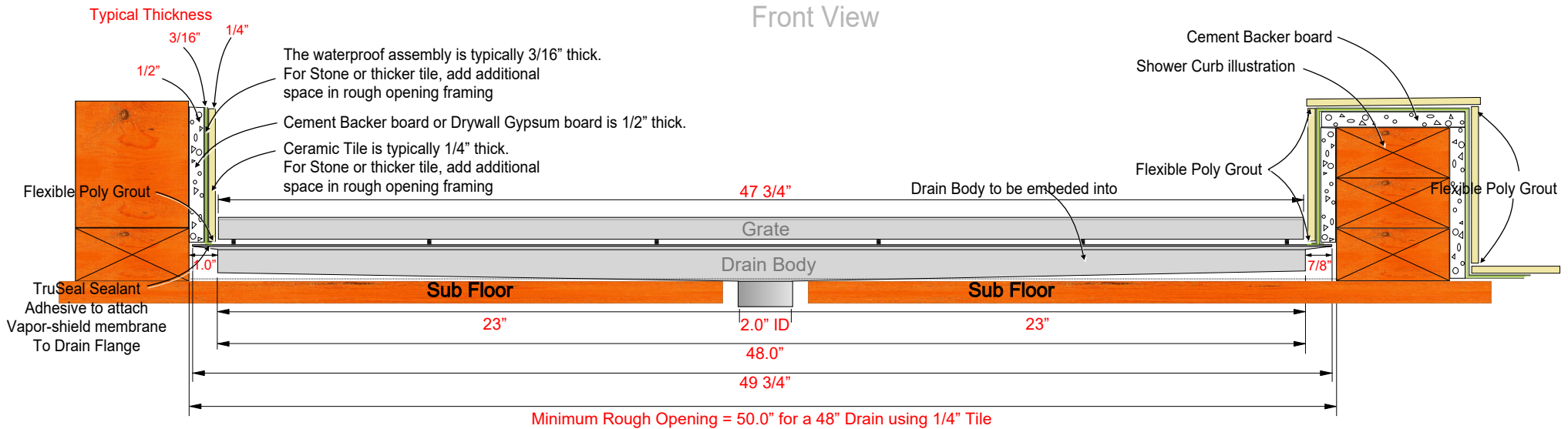
## Drain Connection



**Note:** To determine the framing rough opening size, add one inch to the length or width of the drain body, if a one quarter inch thick tile is being used. If the tile or stone is thicker than the 1/4" and the additional thickness of the tile to the 1 inch distance normally used to determine the rough opening size. So for example, for the rough opening for a 70 inch linear drain, the rough opening would need to be 72 inches, when 1/4" tile is being used.

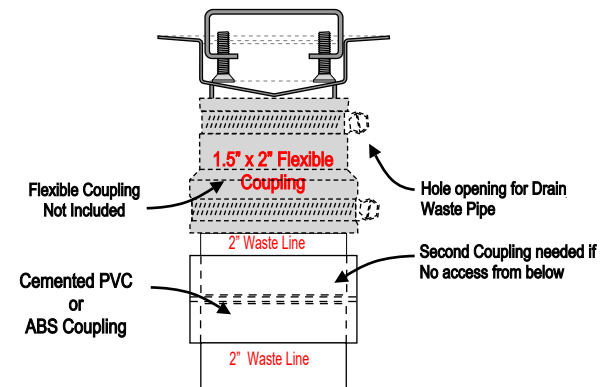
# 48" Truline Linear Drain Framing Detail Drawing

Front View



Sloped Mortar Bed  
(1/4" per foot)

## Drain Connection

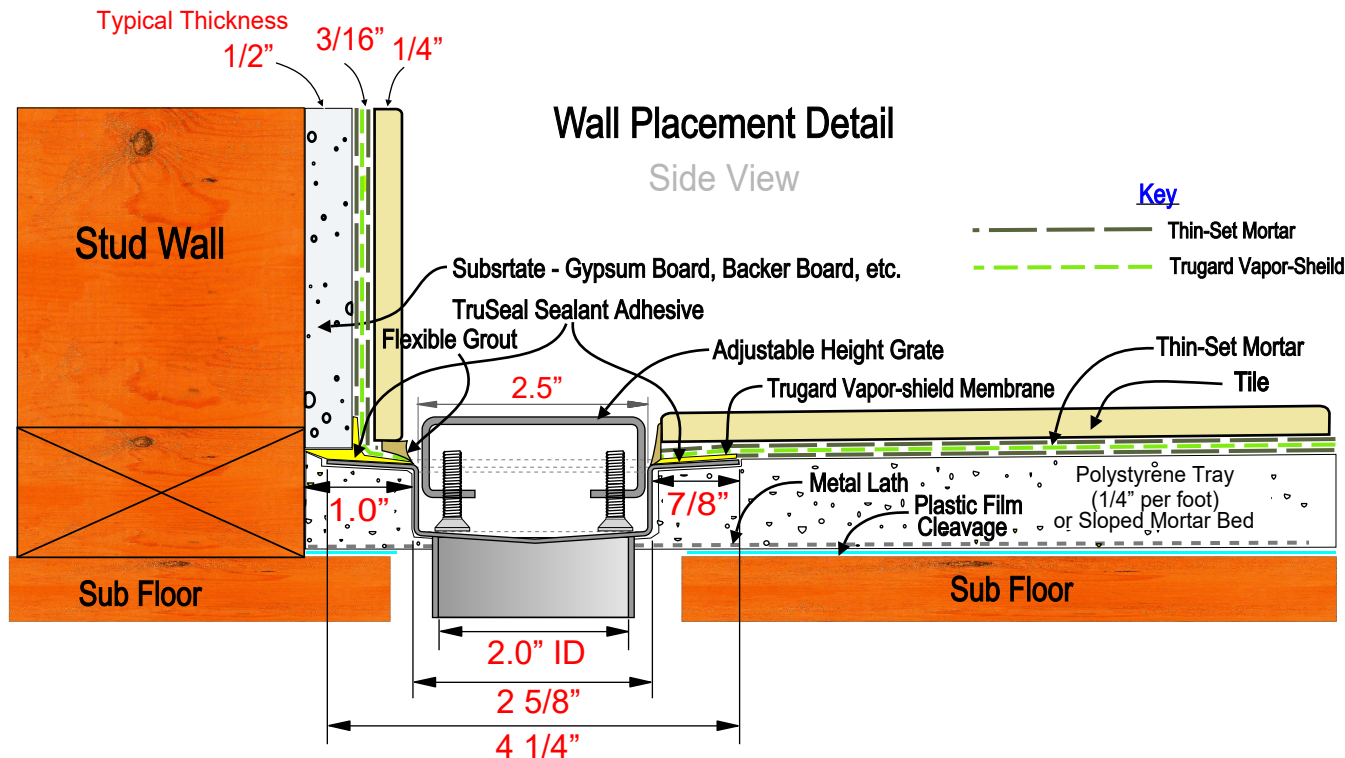
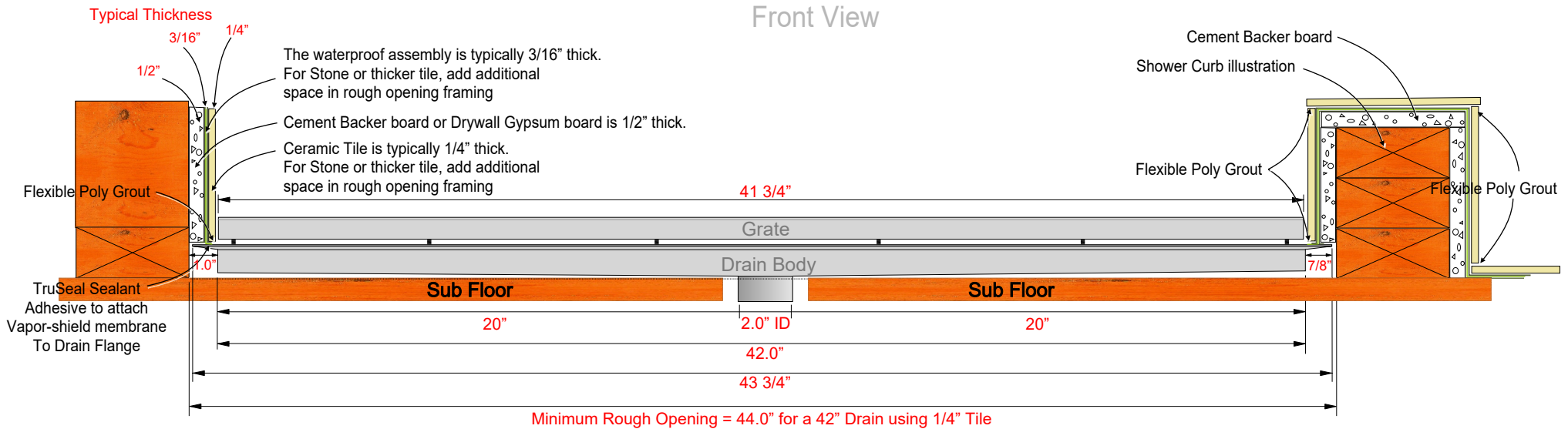


**Note:** To determine the framing rough opening size, add one inch to the length or width of the drain body, if a one quarter inch thick tile is being used. If the tile or stone is thicker than the 1/4" and the additional thickness of the tile to the 1 inch distance normally used to determine the rough opening size. So for example, for the rough opening for a 48 inch linear drain, the rough opening would need to be 50 inches, when 1/4" tile is being used.



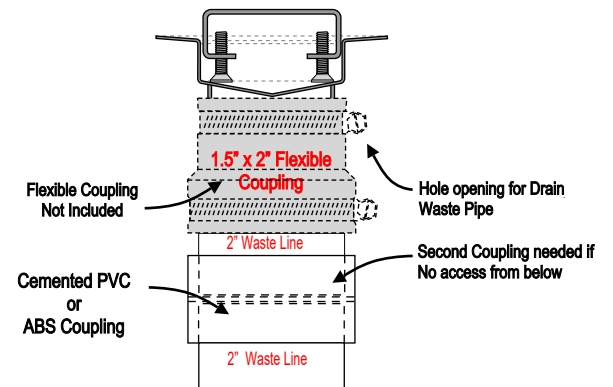
# 42" Truline Linear Drain Framing Detail Drawing

Front View



Sloped Mortar Bed  
(1/4" per foot)

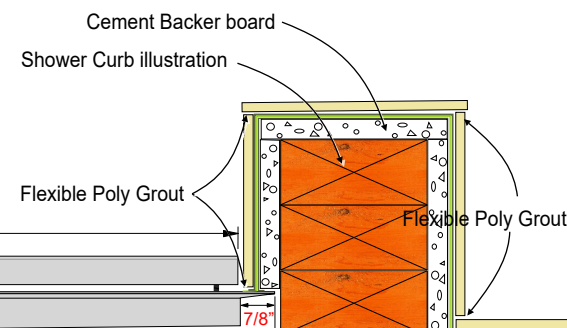
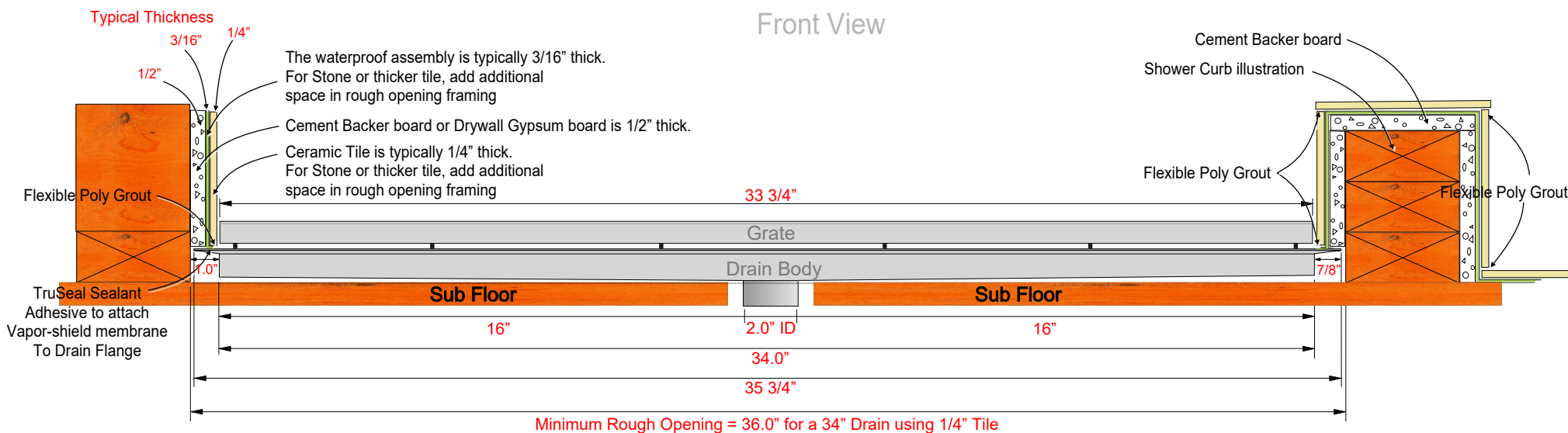
## Drain Connection



**Note:** To determine the framing rough opening size, add one inch to the length or width of the drain body, if a one quarter inch thick tile is being used. If the tile or stone is thicker than the 1/4" and the additional thickness of the tile to the 1 inch distance normally used to determine the rough opening size. So for example, for the rough opening for a 42 inch linear drain, the rough opening would need to be 44 inches, when 1/4" tile is being used.

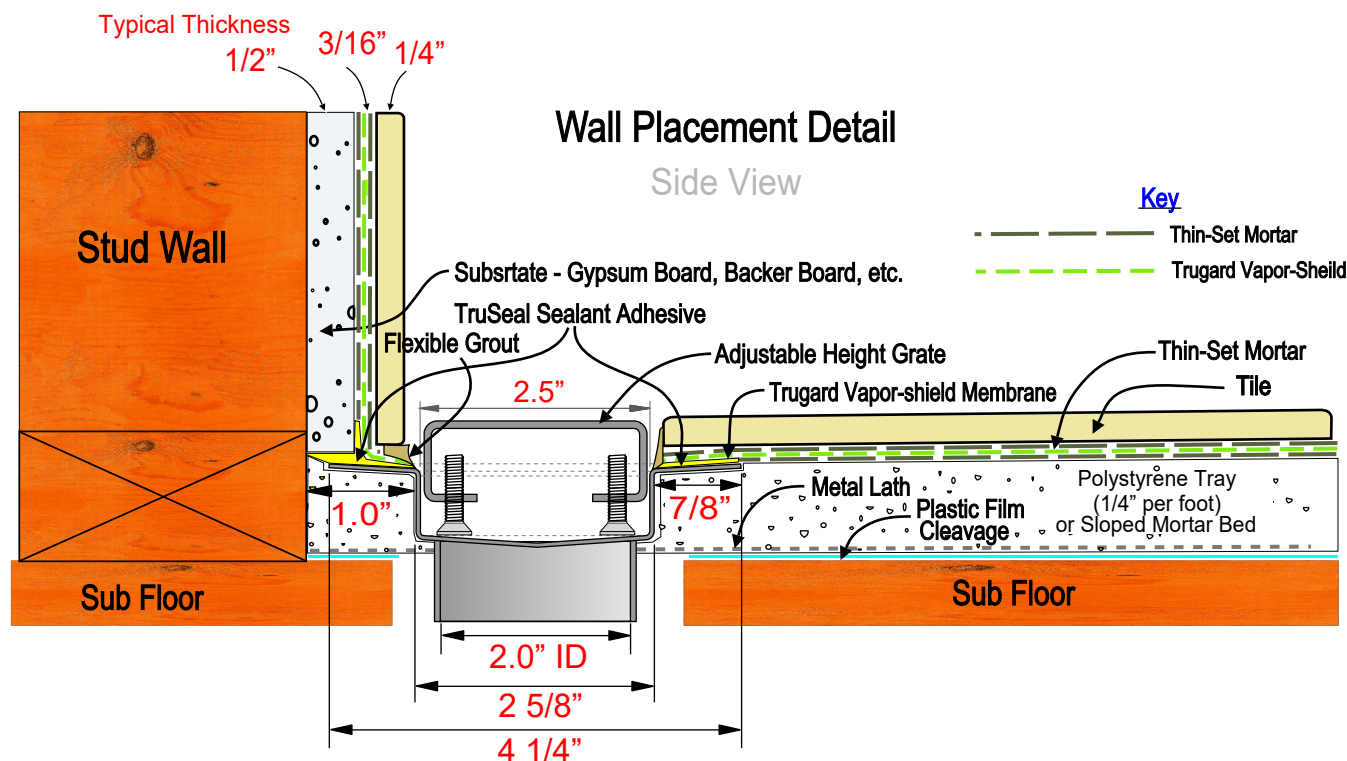
# 36" Truline Linear Drain 34" Grate Framing Detail Drawing

Front View



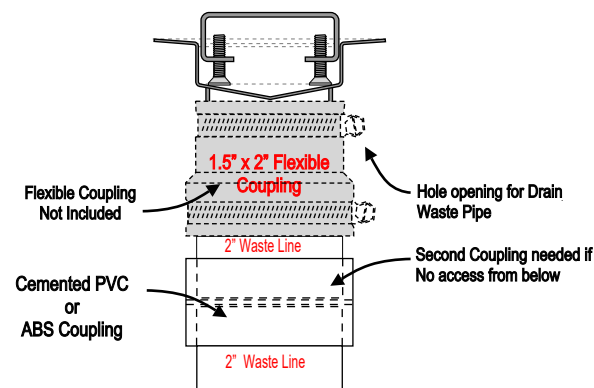
## Wall Placement Detail

Side View



Sloped Mortar Bed  
(1/4" per foot)

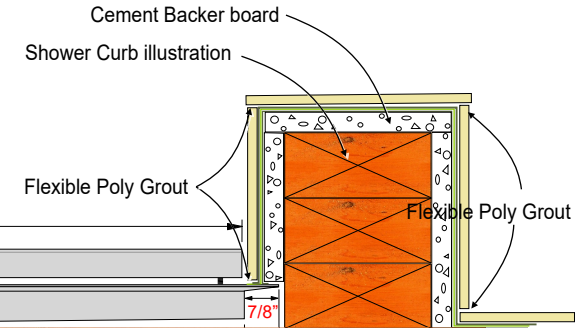
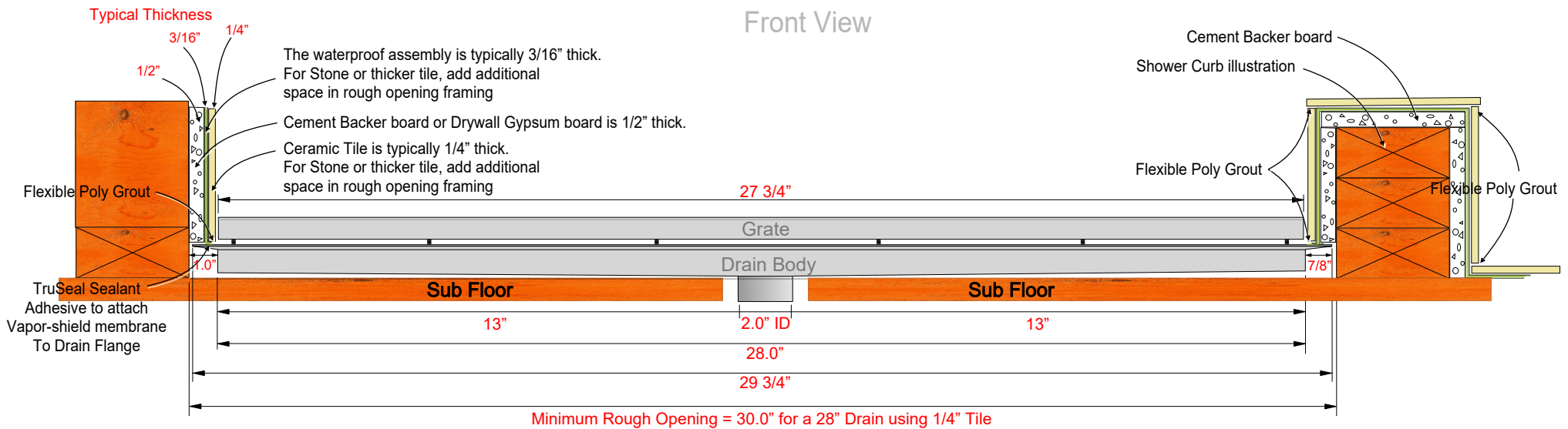
## Drain Connection



**Note:** To determine the framing rough opening size, add one inch to the length or width of the drain body, if a one quarter inch thick tile is being used. If the tile or stone is thicker than the 1/4" and the additional thickness of the tile to the 1 inch distance normally used to determine the rough opening size. So for example, for the rough opening for a 34 inch linear drain, the rough opening would need to be 36 inches, when 1/4" tile is being used.

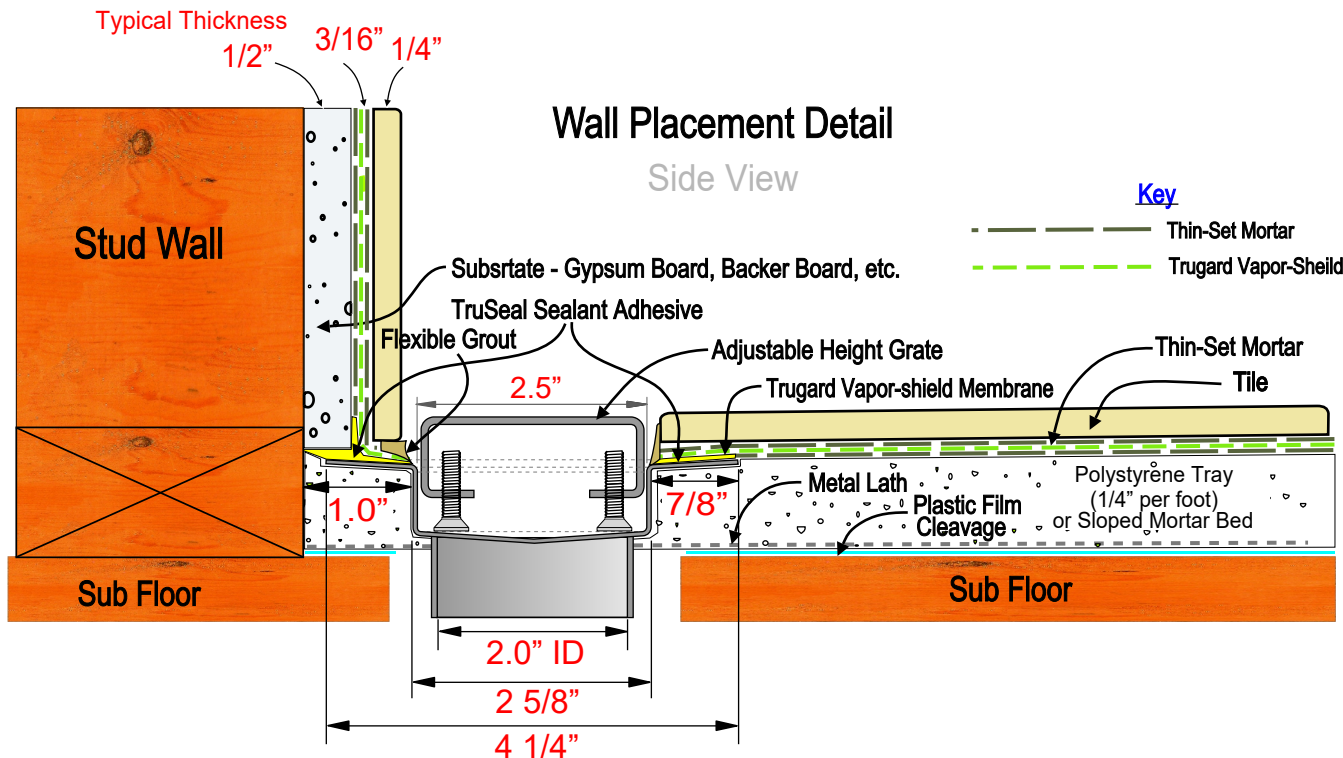
# 30" Truline Linear Drain 28" Grate Framing Detail Drawing

Front View



Wall Placement Detail

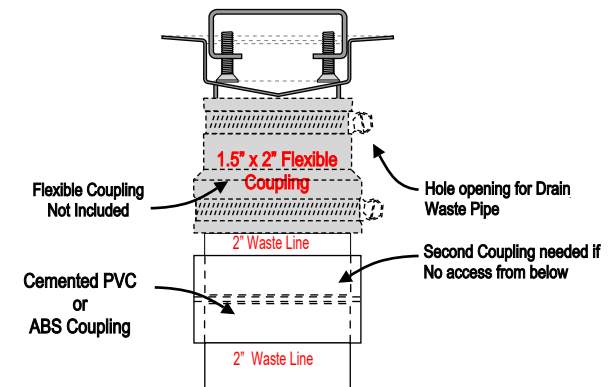
Side View



Key



Drain Connection

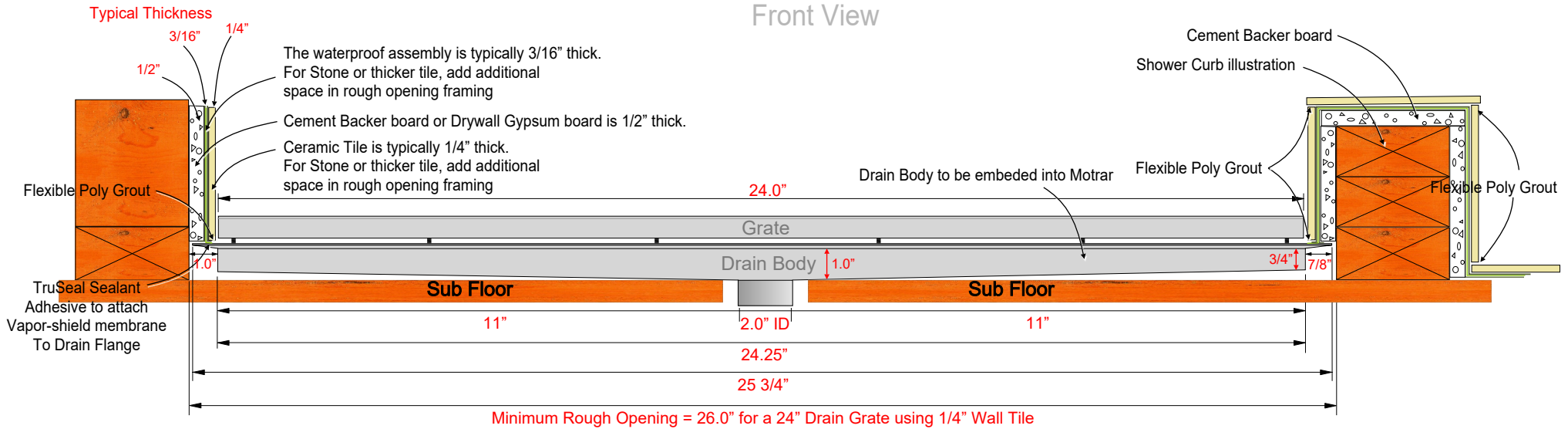


**Note:** To determine the framing rough opening size, add one inch to the length or width of the drain body, if a one quarter inch thick tile is being used. If the tile or stone is thicker than the 1/4" and the additional thickness of the tile to the 1 inch distance normally used to determine the rough opening size. So for example, for the rough opening for a 28 inch linear drain, the rough opening would need to be 30 inches, when 1/4" tile is being used.



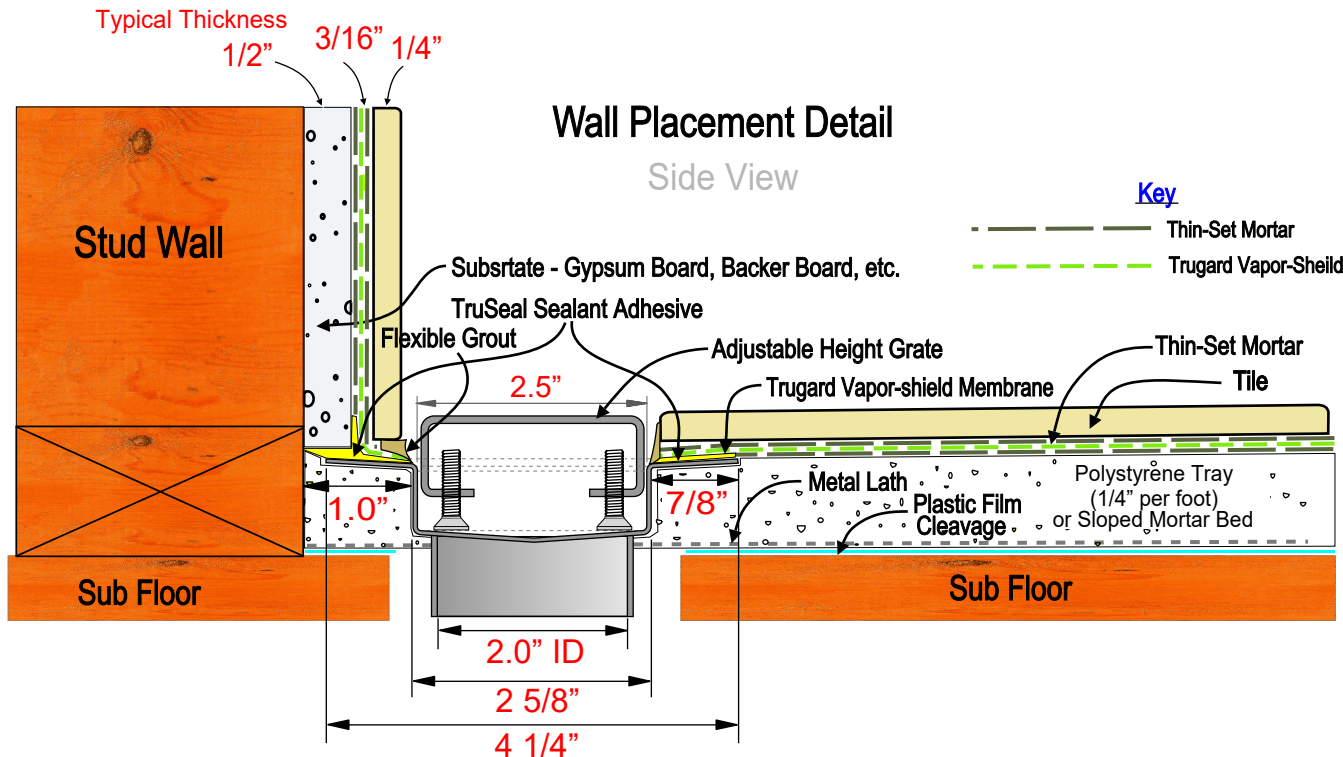
# 26" Truline Linear Drain 24" Grate Framing Detail Drawing

Front View



## Wall Placement Detail

Side View

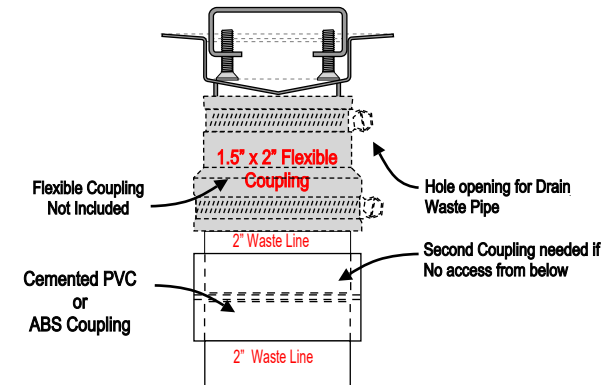


### Key

- Thin-Set Mortar
- Trugard Vapor-Shield

Sloped Mortar Bed  
(1/4" per foot)

## Drain Connection



**Note:** To determine the framing rough opening size, add one inch to the length or width of the drain body, if a one quarter inch thick tile is being used. If the tile or stone is thicker than the 1/4" and the additional thickness of the tile to the 1 inch distance normally used to determine the rough opening size. So for example, for the rough opening for a 24 inch linear drain, the rough opening would need to be 26 inches, when 1/4" tile is being used.