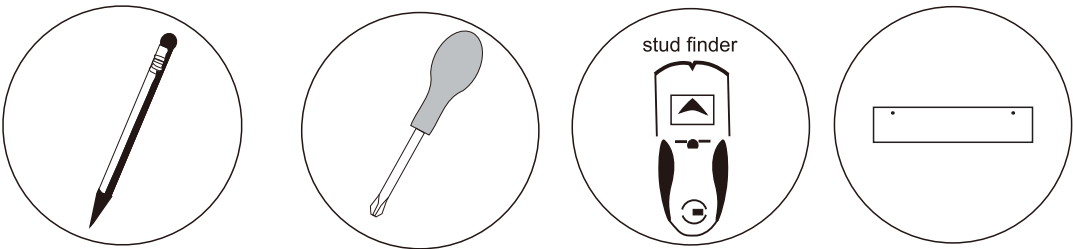


Maximum load claim  
Whole shelf set:Holds up to 12 lbs (5.4kg)

# WALL SHELF SKU: BR17052

with keyholes

## TOOLS NEEDED



## HARDWARE

plastic dry wall anchor  
Size:6mmØ×30mm L

philip head screws  
Size:4mm dia.×30mm L

stud mounting screw  
Size:4mmØ×50mm L

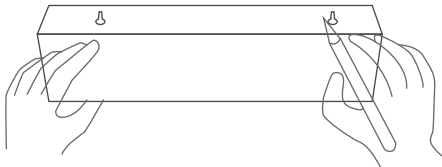


### NOTE:

- For drywall mounting, use anchors with screws.
- For stud mounting, use stud mounting screw.
- If walls are concrete or plaster, please consult your local hardware store.

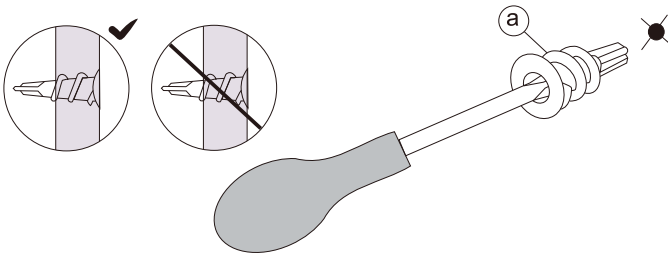
### STEP1

**Drywall Mounting**(1a)Determine placement of shelf on wall. Using the enclosed paper template, stick it on the wall at the desired position to determine the location of the screws. Drill a 2mm (3/32") hole through the paper into the wall for each screw needed. Remove paper template from the wall.



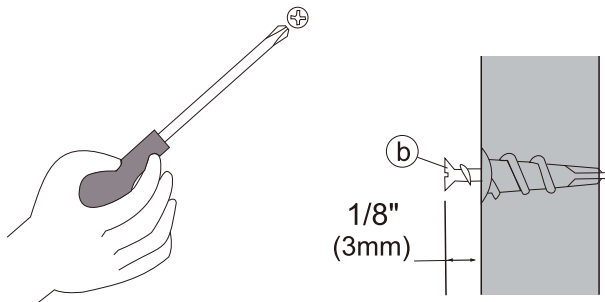
### STEP2

Dry wall mounting:(2a)Place Philips screw driver into anchor (a).Press the anchor into wall, then turn clockwise until anchor is flush with the wall.



### STEP3

**Dry wall mounting:**(3a) Insert screws (b) into anchors.



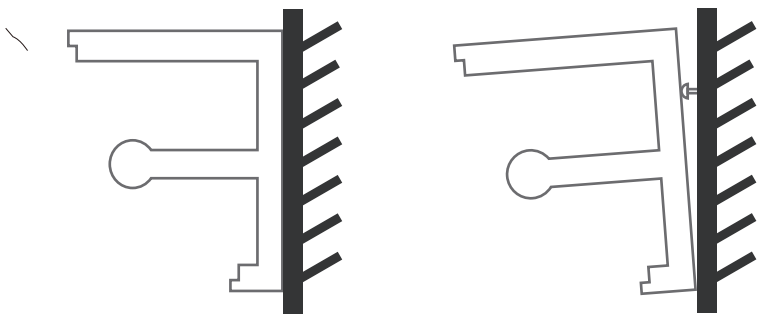
**Stud Mounting**(1b)Using a stud finder, locate and carefully mark the location of studs on the wall where you want to hang your shelf.  
Note: It is best to mount the shelf to at least one stud.

**Stud Mounting:**(2b) Skip to step 3

**Stud Mounting:**(3b)Using Philips

### STEP 4

Hang shelf.



NOTE: Tighten screw and re-hang

