

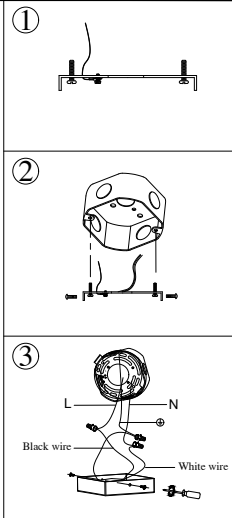
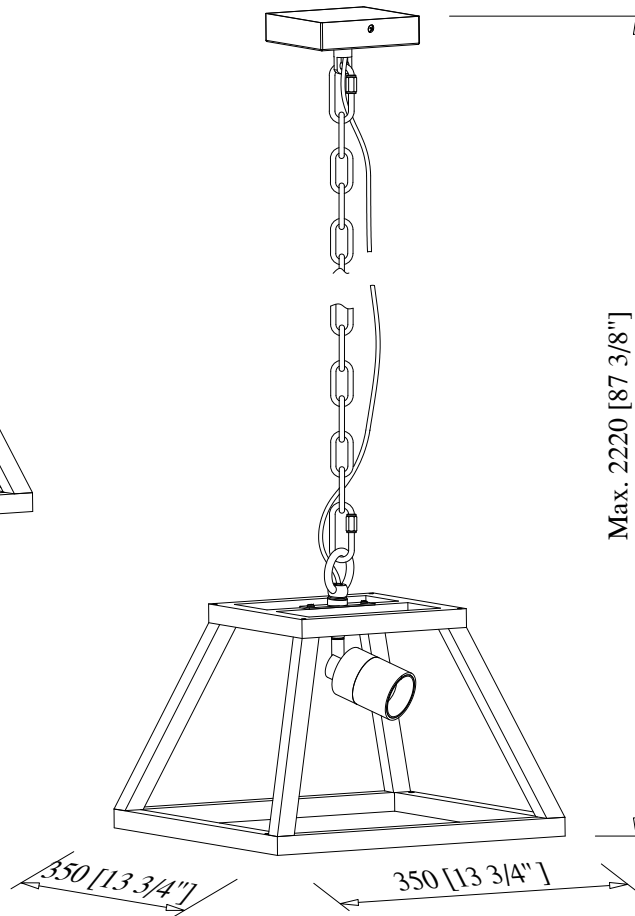
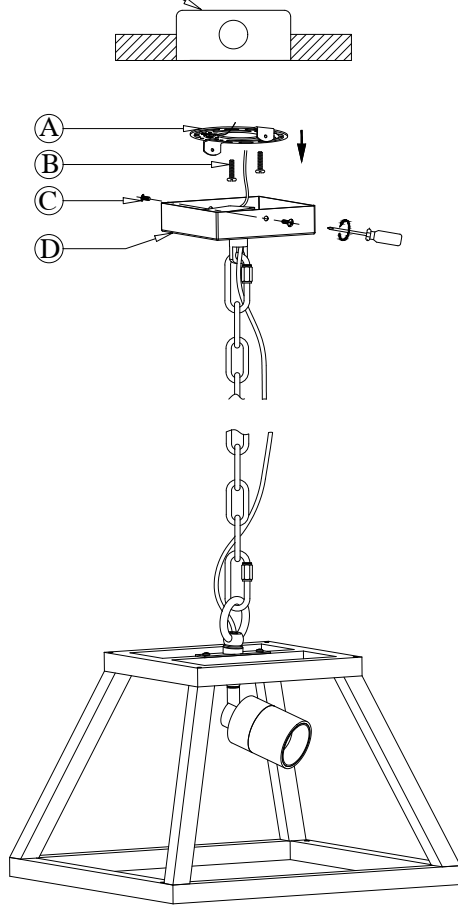
DIAGRAM OF INSTALLATION STRUCTURE

SKU No. :CE1009216/CE1009217/CE1009218

Product Size: L13.8"*W13.8"*H87.4"(Max)

Light Source: COB

4" Octagonal J-box(by others)



- ① Mounting Bracket ② Mounting Screw (2X) ③ Round Head Screw (2X) ④ Canopy

Installation instruction

- 1.Unpack and take out the fixture / accessory bag, then turn off the power.
- 2.Dismantle mounting bracket subassembly as picture(1), then install mounting bracket(A) to J-Box with mounting screws(B).
- 3.Adjust the length of the chain and the the wire cable to the required installation height.
- 4.Connect the fixture to a suitable ground in accordance with local electrical codes.
- 5.Connect the White wire to the neutral power line wire with a wire nut.
- 6.Connect the Black wire to the hot power line wire with a wire nut.
- 7.Neatly place all wires and wire nut connections inside the J-box.
- 8.Install canopy(D) to ceiling with round head screws(C).
- 9.Adjust the direction and angle of spotlight as the need.
- 10.After finish the installation, turn on the power.