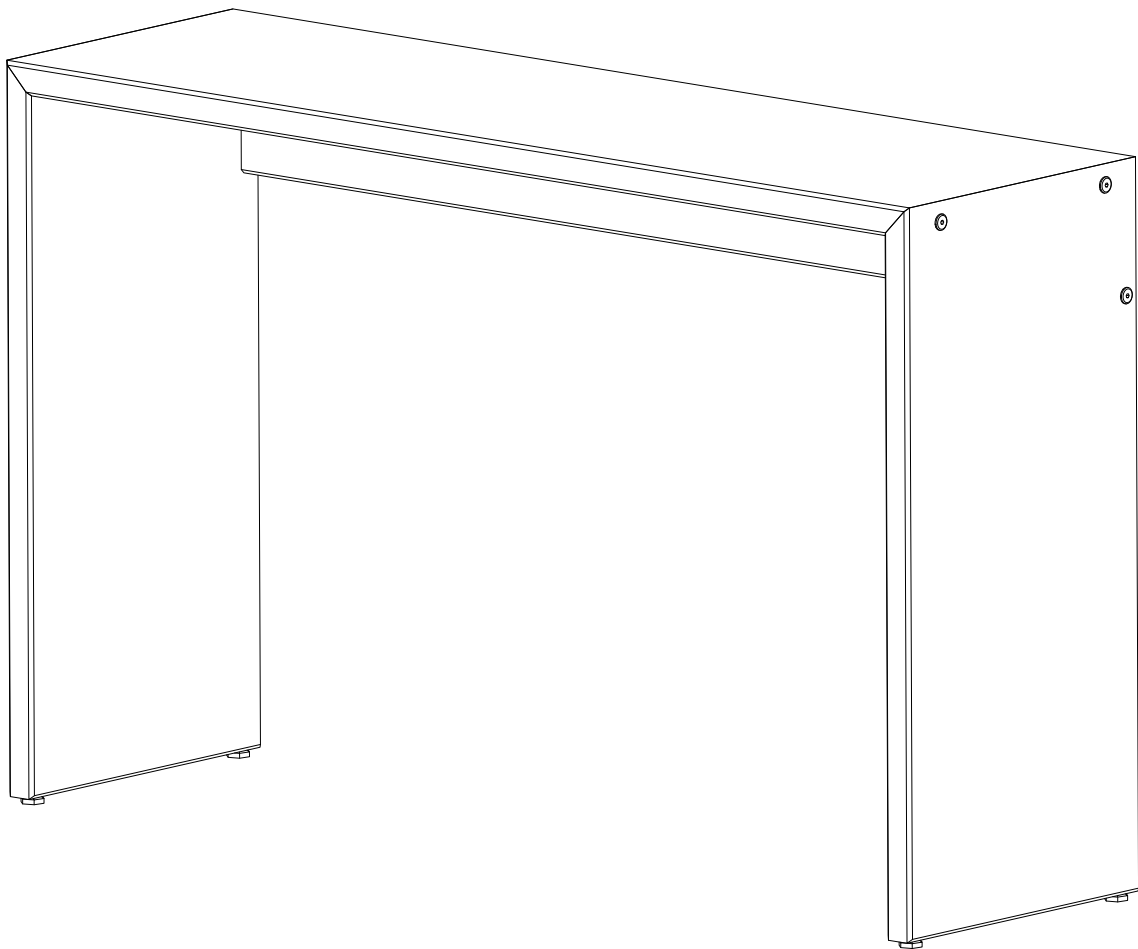




Item # : AF48ALP
Assembly Instructions

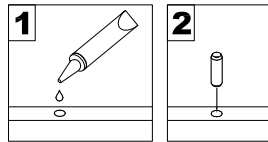


For the most current instructions, additional assembly tips, to report damage or request parts,
Please visit our website at www.walkerredison.com

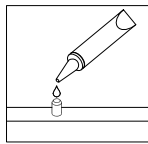
Revised 08/2017

General Assembly Guidelines

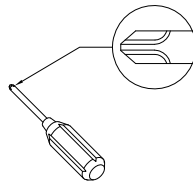
- I. Ensure that all parts and hardware are available before beginning assembly.
- II. Follow each step carefully to ensure the proper assembly of this product.
- III. Two people are recommended for ease in the assembly of this product.
- IV. The three main types of hardware used to assemble this product are : wood dowels , screws and bolts.
- V. The provided glue is to secure wood dowels in place . When first inserting dowels , locate the appropriate hole for the dowel , place a small amount of glue in the hole and insert the dowel . Wipe away excess glue immediately.



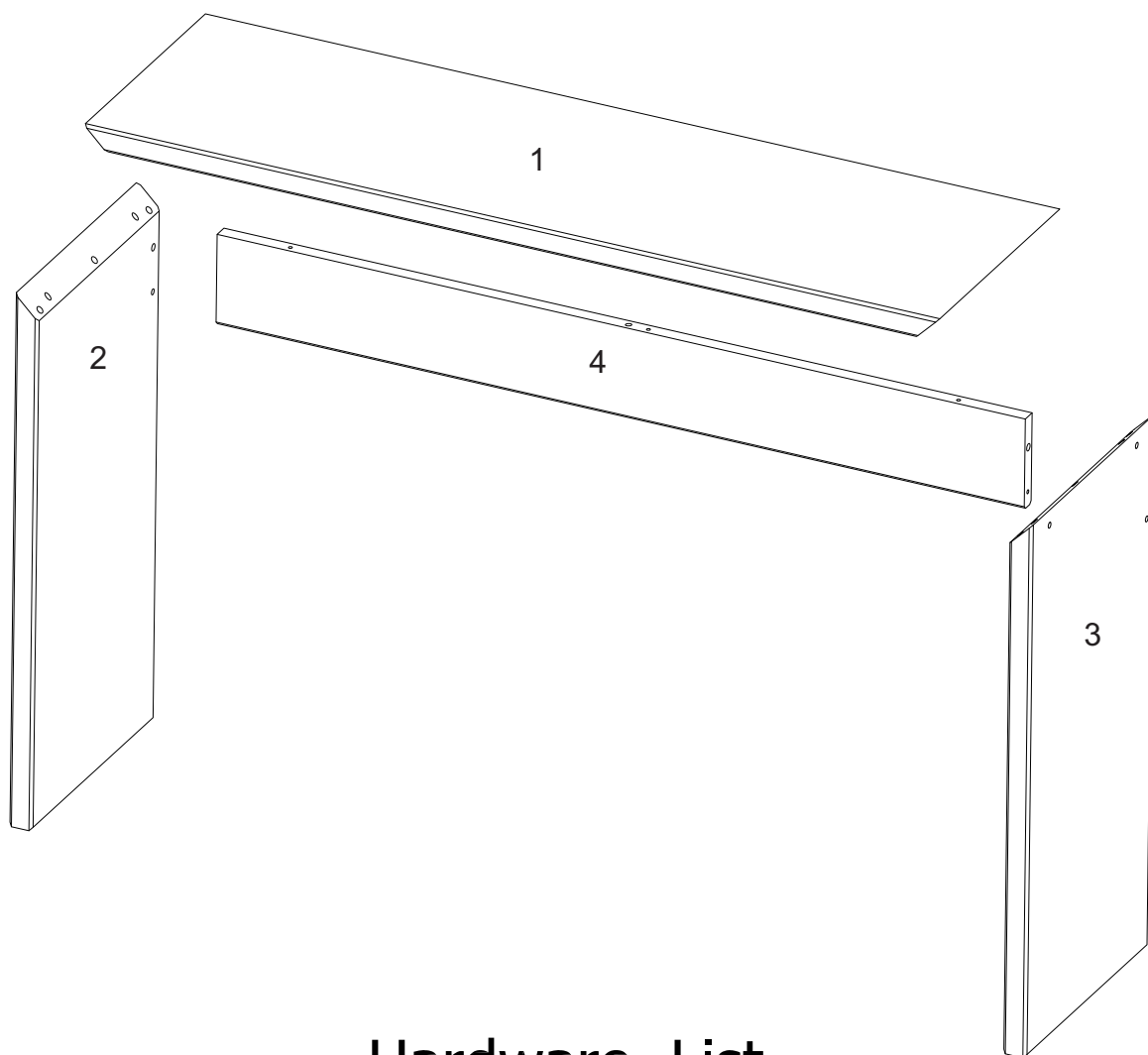
In future assembly steps when dowels are necessary to attach assembly parts together , place a small amount of glue on the end of the dowel before attaching parts together . Wipe away excess glue immediately.



- VI. A Phillips head screwdriver or power tools is required to assembly this product.



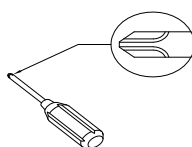
Parts List



Hardware List

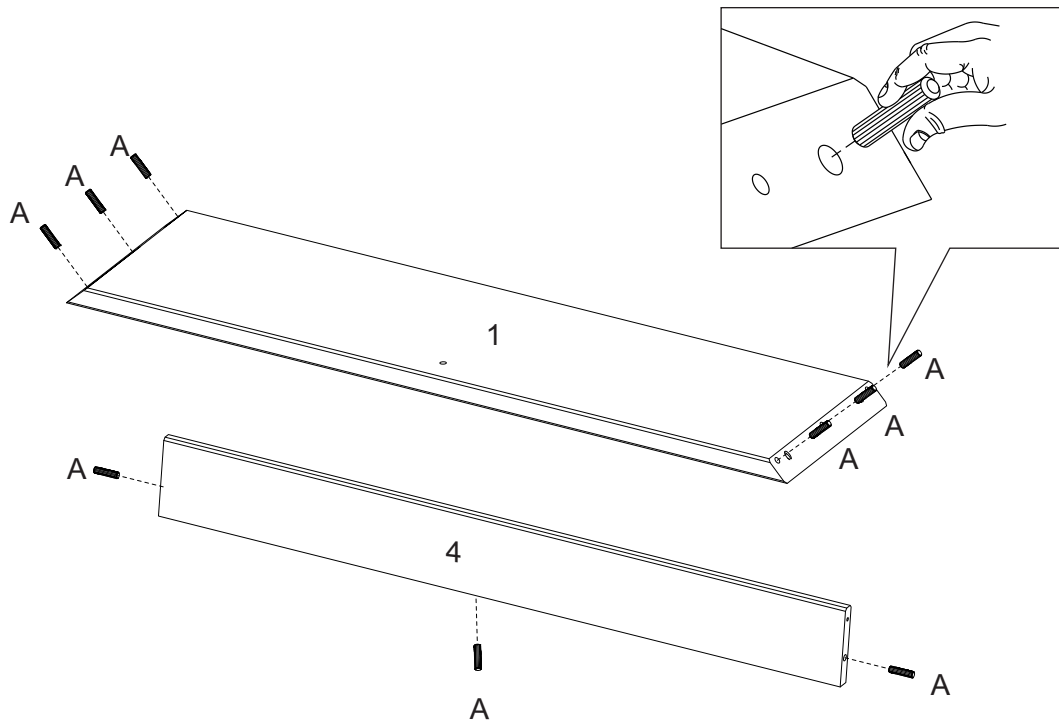
A		Ø10*40mm	Wooden dowel	09	pcs
B		Ø4.0*40mm	Screw	03	pcs
C		Ø7*70mm	Screw	06	pcs
D		M4mm	Hex Key	01	pcs
E			Glue tube	01	pcs
F			Adjustable Foot	04	pcs

A Phillips head screwdriver or power tools is required to assembly this product (Not included).



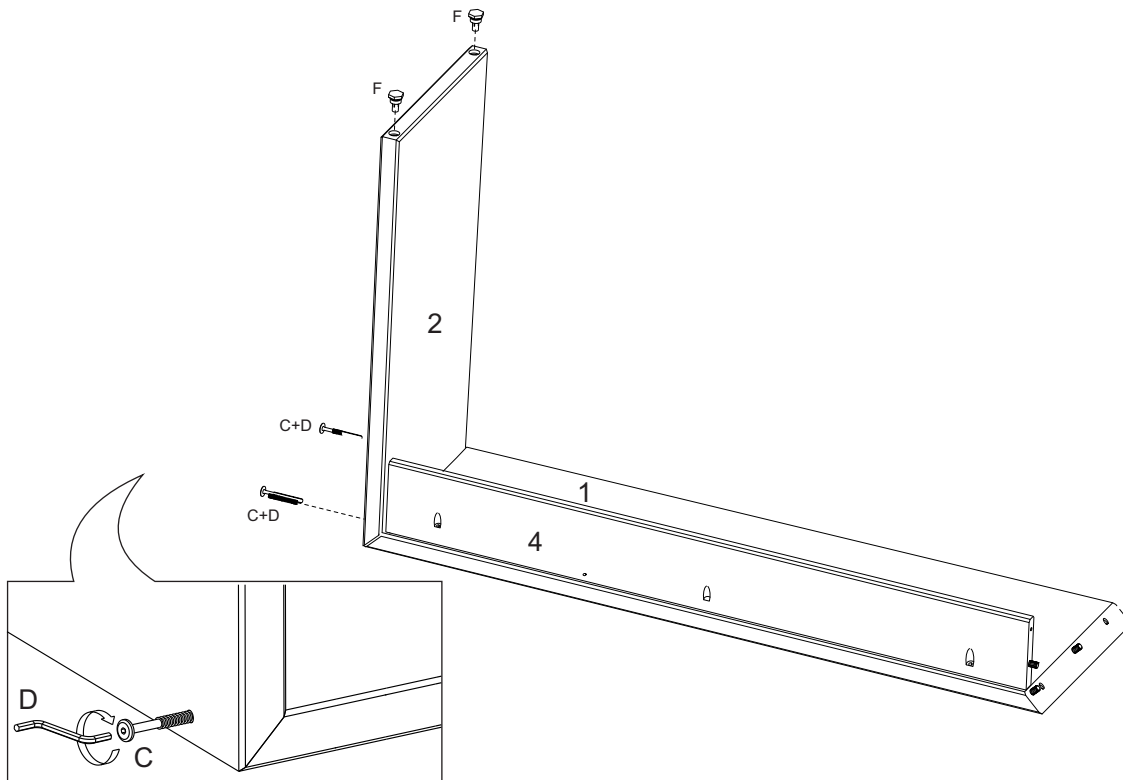
*The hardware quantities listed above are required for proper assembly.
Some extra hardware may also have been included.*

Step 1



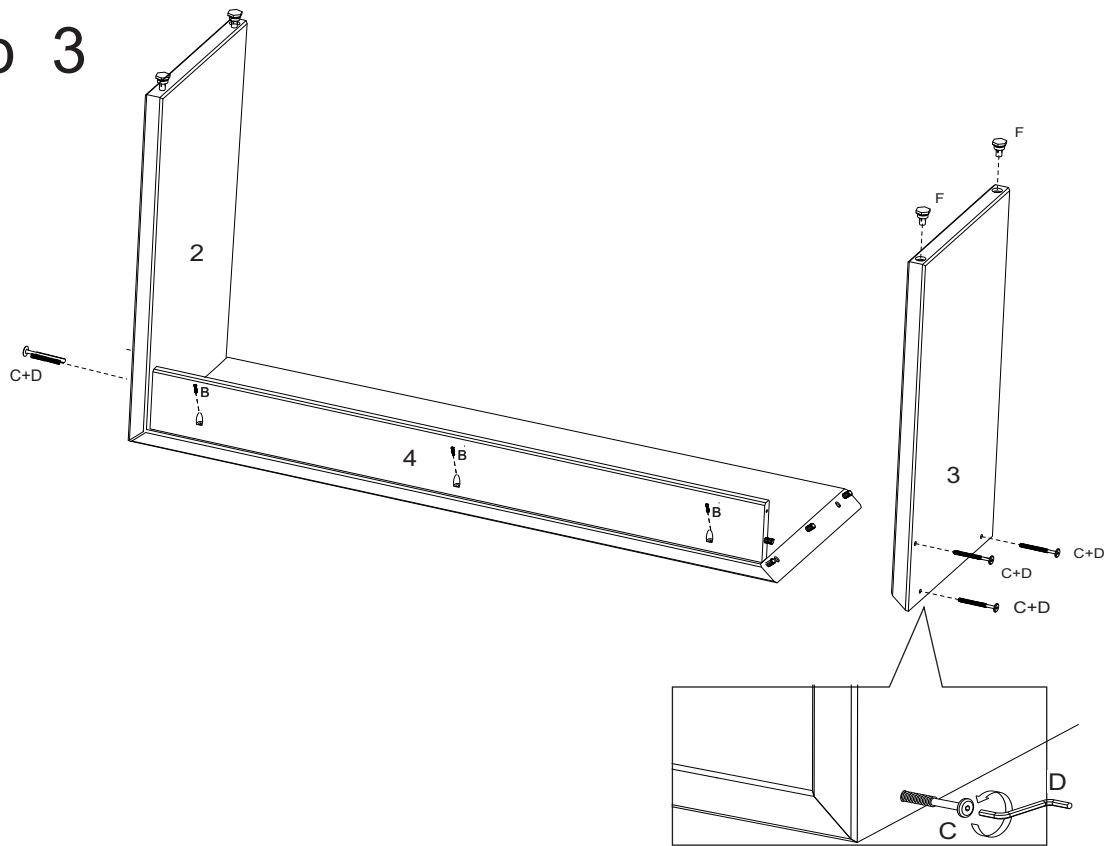
Insert Wooden dowel (A) into top panel (1). And support bar (4).

Step 2



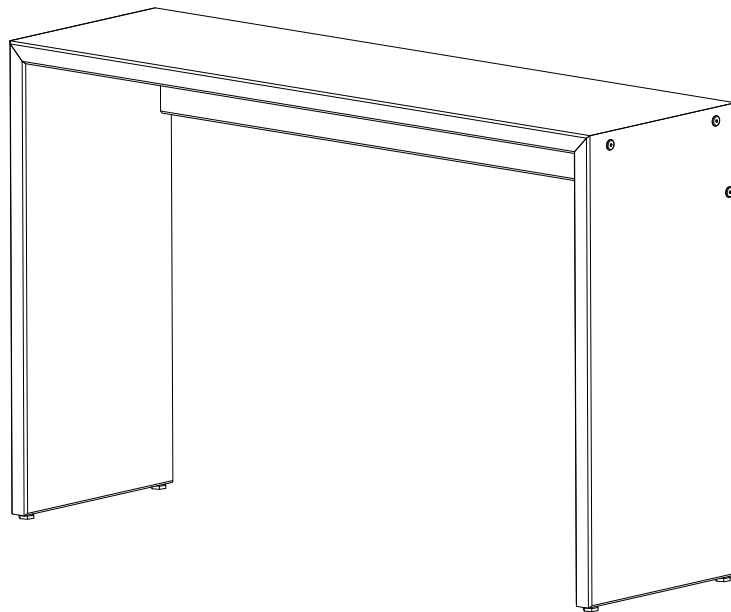
Secure side panel (2) to top panel (1) using screw (C) and hex key (D). Insert adjustable foot (F) into side panel (2). Attach support bar (4) to side panel (2), and top panel (1).

Step 3



Secure side panel (3) to top panel (1) using screw (C) and hex key (D). Insert adjustable foot (F) into side panel (3). Secure side panels (2) and (3) to support bar (4) with screw (C) and hex key (D), then secure support bar (4) to top panel (1) with screw (B).

Step 4



Final Assembly