



## MAINTENANCE AND CARE INSTRUCTIONS

Olympia products are designed and engineered under strict quality standards. Regular and proper care of our products will ensure years of trouble free service. To clean, simply wipe with a damp, soft cloth. Do not use abrasive or harsh cleaners as they may result in finish damage. Regularly remove the aerator and clean any debris inside it.

## TROUBLE SHOOTING

A. If water leaks from the spout outlet:	1. Shut off both hot and cold water supplies.
	2. Remove handle (A1-A4), cap (B), cam & washer (C), and stainless steel ball (D).
	3. Check and replace springs and seats (E).
	4. Reassemble the stainless steel ball (D), cam & washer (C), cap (B), and handle (A1-A4).
	5. If seepage still occurs, replace the stainless steel ball (D).
B. If water leaks from under the handle:	1. Remove handle (A1-A4) and tighten adjusting ring (B) until water has stopped leaking.
	2. If leakage persists, see Trouble Shooting "A".
C. If water leaks under the faucet:	1. Check the aerator is tightened securely and make sure the rubber washer is not damaged before tightening the aerator back.
	2. If leakage persists, check water supply line and copper tubing waterway hookups to make sure they are tightly fastened.
	3. Check if the sealant is intact and its sealing properly.
D. If faucet has low flow:	1. Check the aerator is tightened securely and make sure the rubber washer is not damaged before tightening the aerator back.
	2. Repeat Trouble Shooting "A" and clean any debris trapped in the seats and springs.

## OLYMPIA FAUCETS, INC. LIMITED LIFETIME WARRANTY \*

Olympia Faucets, Inc. warrants its products to the original consumer purchaser to be free from defects in material and workmanship as long as the consumer purchaser owns it. Dated proof of purchase must accompany all warranty claims. PVD finishes carry a lifetime warranty in residential service.

Olympia Faucets, Inc. will replace, free of charge, to the original consumer purchaser, any and all parts that prove defective under normal installation, use, and service. Damage as a result of misuse, abuse, accident, or improper installation, will consequentially void this warranty. Replacement parts can be obtained from your local dealer or directly from Olympia Faucets. Olympia Faucets, Inc. recommends using a certified plumber for all faucet installation and repair.

This warranty is limited to replacement of defective parts only. Incidental and consequential damages, labor charges, repair, or replacement costs are expressly excluded. Some states do not allow the exclusion or limitation of incidental or consequential damages, so the above limitation may not apply to you. This warranty gives you specific legal rights, as you may have other rights of which vary from state to state.

Installation or maintenance and cleaning must be in compliance with instructions furnished with every Olympia product. If you find a problem with your product, please immediately contact your nearest Olympia Faucets, Inc. dealer or sales representative.

\* 2 year limited warranty on commercial and multi-family projects.



## INSTALLATION AND MAINTENANCE INSTRUCTIONS FOR OLYMPIA SINGLE HANDLE LAVATORY FAUCETS

THIS PRODUCT MEETS THE FOLLOWING STANDARDS: ASME A112.18.1 ~ ANSI A117.1 ~ ANSI / NSF 61, SECTION 9 ~ UPC / IAPMO LISTED / ADA COMPLIANT ~ COMPLIES WITH CALIFORNIA LEAD PLUMBING LAW

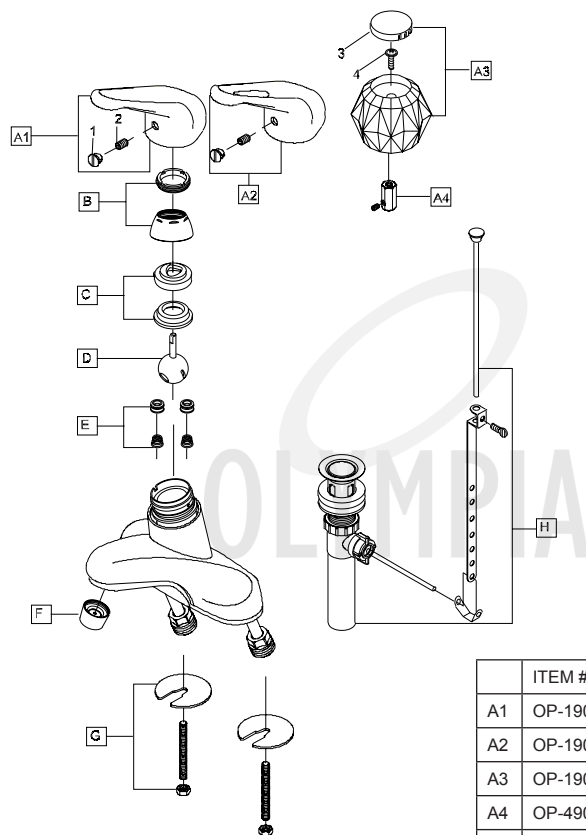
## PRODUCT NUMBERS

<b>#L-6160*</b>	Metal Handle ~ With 50/50 Pop-Up ~ Chrome
<b>#L-6161*</b>	Metal Handle ~ Less Pop-Up ~ Chrome
<b>#L-6162*</b>	Metal Handle ~ With Brass Pop-Up ~ Chrome
<b>#L-6170*</b>	Metal Loop Handle ~ With 50/50 Pop-Up ~ Chrome
<b>#L-6171*</b>	Metal Loop Handle ~ Less Pop-Up ~ Chrome
<b>#L-6172*</b>	Metal Loop Handle ~ With Brass Pop-Up ~ Chrome
<b>#L-6180</b>	Acrylic Ball Handle ~ With 50/50 Pop-Up ~ Chrome
<b>#L-6181</b>	Acrylic Ball Handle ~ Less Pop-Up ~ Chrome
<b>#L-6182</b>	Acrylic Ball Handle ~ With Brass Pop-Up ~ Chrome





Thank you for purchasing this quality product. Olympia products are rigorously tested to provide long service under normal conditions. Prior to installation, familiarize yourself with this parts diagram. Make sure that you have all of the illustrated parts for your Olympia product before installation.



	ITEM #	DESCRIPTION
	A1	OP-190001 Metal Lever Handle
	A2	OP-190002 Metal Loop Handle
	A3	OP-190008 Acrylic Ball Handle
	A4	OP-490023 Acrylic Handle Adapter
	B	OP-490003 Cap & Adjusting Ring
	C	OP-490004 Cam & Washer
	D	OP-390001 Stainless Steel Ball
	E	OP-490041 Springs and Seats
	F	OP-490035 1.5 GPM Aerator
	G	OP-530001 Mounting Kit
	H	OP-590001 Supply Nut
	I	OP-630004 50/50 Pop-Up Drain Assembly
		OP-630002 Brass Pop-Up Drain Assembly
	1	OP-490002 Hot & Cold Indicator
	2	OP-490043 Allen Screw
	3	OP-490021 Acrylic Ball Handle Button
	4	OP-490022 Acrylic Ball Handle Screw



For more care information or trouble shooting inquiries about your Olympia product, please call:  
**OLYMPIA FAUCETS, INC.** (888) 772-7701  
Central Standard Time: 8:00am ~ 7:00pm  
[www.olympiafaucets.com](http://www.olympiafaucets.com)

## INSTALLATION INSTRUCTIONS

### Tools you will need:

- Plumbers Putty
- Teflon Tape
- Screwdriver
- Flexible Supply Lines
- Pipe Wrench
- Adjustable Wrench
- Basin Wrench
- Soft Cloth

### FAUCET INSTALLATION:

1. Carefully shut off both hot and cold water supplies from under the sink. Plug the sink drain with a soft cloth to prevent intrusion of debris or the loss of any faucet parts. If this installation is for a replacement, carefully remove the existing faucet and clean the entire surface of the sink mounting holes.
2. Apply adequate Plumbers Putty along the boundary of the bottom of the Faucet.
3. Gently align the faucet with the sink mounting holes and place the faucet on the sink. Carefully lead both copper tubing waterways through the sink mounting holes. CAUTION: Do not bend the copper tubing waterways as they may result in leakage from the faucet.
4. Thread the Mounting Bolts from underneath of the Faucet. Slide the mounting brackets underneath of sink mounting holes and mounting nuts along the copper tubing waterways. Carefully tighten the mounting nuts to water supply lines with a basin wrench or and adjustable wrench.
5. Connect both hot (LEFT INLET) and cold (RIGHT INLET) waterways. NOTE: If additional adapters or supply lines are required, they may be purchased from the same location where this faucet was purchased. Use with Teflon tape when attaching supply lines to waterways.

### POP-UP DRAIN ASSEMBLY INSTALLATION:

1. Thread mounting nut and bottom gasket of the pop-up drain assembly (I) onto the drain body. Wrap bottom threaded end of the flange with Teflon tape. Apply adequate amount of plumbers putty to the underside of the flange.
2. Gently slip the drain body up through the drain opening. Screw flange onto drain body, holding the drain body in position with the pivot rod opening facing the back of the sink. Tighten the mounting nut securely with a wrench.
3. Place pivot rod in pivot rod opening. Slide pivot nut over pivot rod and thread it onto the drain body. Hand tighten until it is snug. CAUTION: Be careful not to overtighten.
4. With the lift rod in position through the faucet lift rod hole, insert the rod through the lift rod strap and secure with the set screw.
5. Guide the pivot rod through one of the holes on the lift rod strap and secure it with the spring clip, then adjust the height of the lift rod by resetting the set screw.

### FINAL PRODUCT INSTALLATION:

1. Turn on the hot and cold water. Check all around for any minor joint leaks. NOTE: Inspect for any leaks around the connections to the supply lines.
2. Remove aerator (F) from end of spout. Flush both water lines by allowing water to run through for one minute. Replace aerator (F).

**CAUTION: MAKE SURE TO TIGHTEN THE AERATOR SECURELY AFTER FLUSHING THE WATER LINES TO PREVENT FROM FUTURE WATER SEEPAGE UNDER THE BASE PLATE AND SINK.**  
**CAUTION: FOR 50/50 POP-UP DRAIN INSTALLATION DO NOT USE PLUMBERS PUTTY OR ANY OTHER SEALANT IF NEEDED USE TEFLON TAPE INSTEAD.. THERE IS TEFLON GASKET PROVIDED TO CREATE WATERTIGHT SEAL.**