

# INSTALLATION OF BATHROOM HARDWARE

**TECHNOLOGY • ART • LIFE**



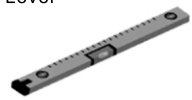



## ATTENTION MATTERS

Please read this installation instruction carefully and install the product according to the steps as follow. If any differences between the object and the illustration, the object received shall prevail.

This manual is applicable to the installation and use of the bathroom pendant sets and single products sold by our company.

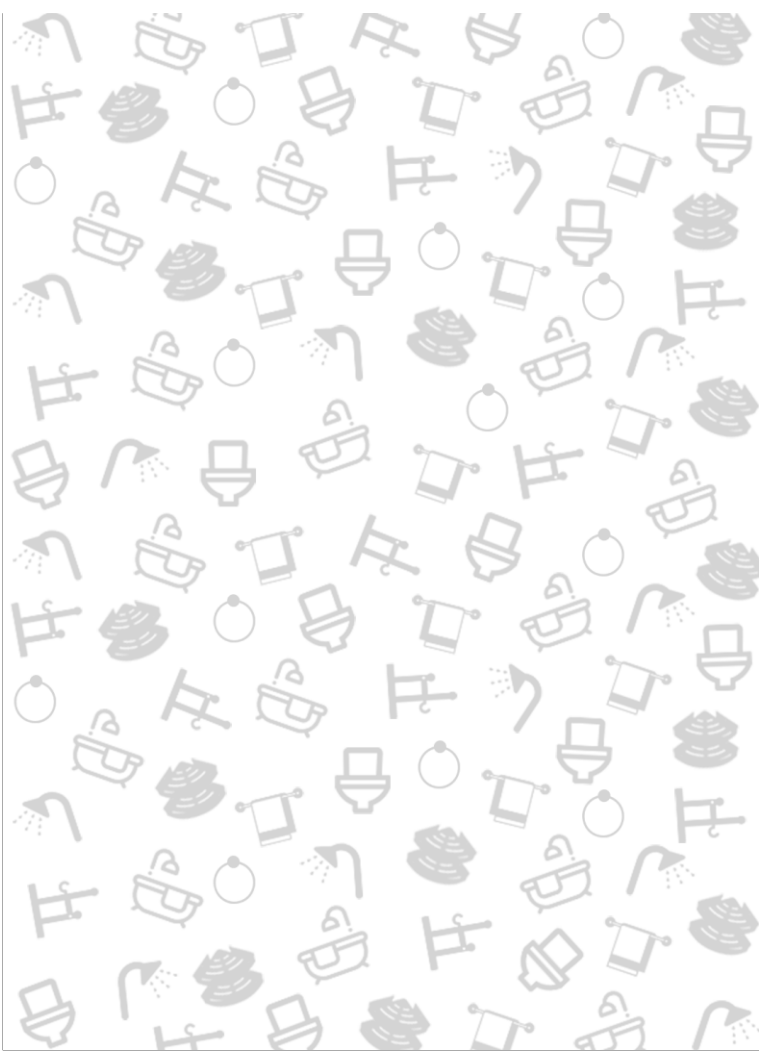
Please use the tools carefully when you install the products, to avoid scratching the surface of the product.

## INSTALLATION TOOLS

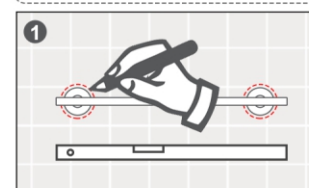
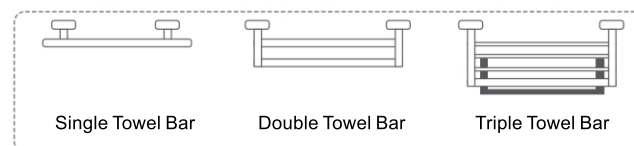
Pencil 	Tape Measure 	Level 
Hammer 	Drill 	Phillips Screwdriver 

## CLEAN AND CARE

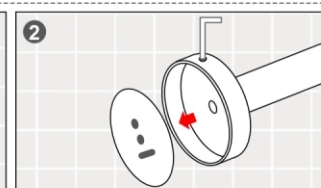
1. Please clean the product regularly to keep it bright and clean.
2. Please Rinse with clean water and wipe dry with soft cotton cloth.
3. Do not use detergent, polishing powder, and other detergents containing coarse particles, such as nylon brush sheet, emery cloth or sandpaper to prevent wear of surface.
4. Do not use any acidic cleaning agent, or coarse cleaning agent or soap to polish.
5. If deep cleaning is needed, please follow the following procedures:
  - a. Use clean water and soft cloth to remove surface dirt;
  - b. Use any of the following detergent to remove surface dirt:
    - Mild liquid cleaner.
    - Colorless glass cleaner or a powder cleaner that does not have a grinding effect and can completely dissolve (and mix as instructed).
    - Polish cleaner that does not contain abrasion.
    - Stubborn dirt can be soaked in hot vinegar and then rubbed with wax or toothpaste or amway hardware cleaner.
    - You can use a fresh lemon slice to wipe the water stains in a circle to remove the stubborn stains; Or use fresh orange peel (the surface part) to wipe the stubborn stains.
  - c. After cleaning, rinse off all the cleaning agents with clean water and wipe dry with soft cotton cloth.



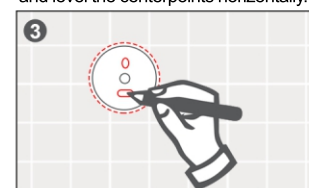
## INSTALLATION STEPS OF TWO-POST PRODUCT



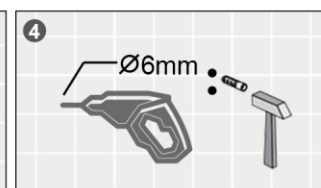
Take the level as the standard, measure and level the centerpoints horizontally.



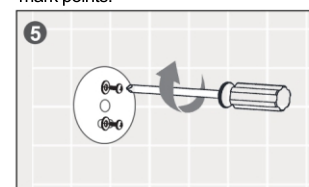
Take out the negative of the product.



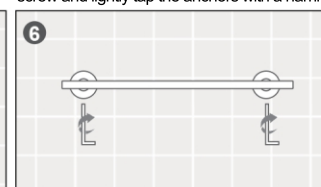
Take the negative of the product as mark points.



Drill 6mm holes with drill, insert the expansion screw and lightly tap the anchors with a hammer.

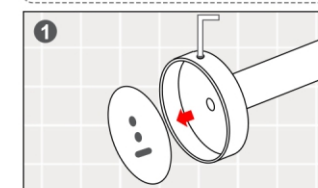


Position the negative of the product over the holes and thread the screws until tight with a phillips screwdriver.

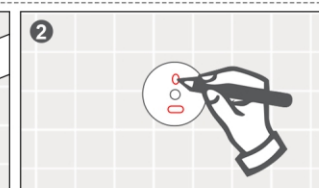


Using the provided Allen wrench, tighten the set screw.  
(The purchased item shall prevail)

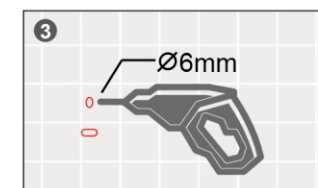
## INSTALLATION STEPS OF SINGLE-POST PRODUCT



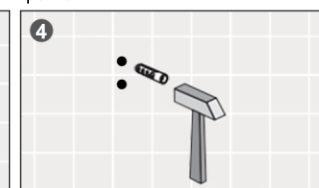
Take out the negative of the product.



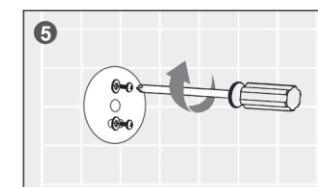
Take the negative of the product as mark points.



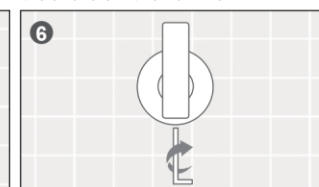
Drill 6mm holes with drill.



Insert the expansion screw and lightly tap the anchors with a hammer.



Position the negative of the product over the holes and thread the screws until tight with a phillips screwdriver.



Using the provided Allen wrench, tighten the set screw.  
(The purchased item shall prevail)