



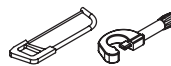
PIONEER INDUSTRIES, INC.
3325 S. Garfield Ave.
Commerce, CA 90040
(800) 338-9468
www.pioneerind.com

INSTALLATION

Tools:



Adjustable
Wrench



Hacksaw &
Pipe Cutter

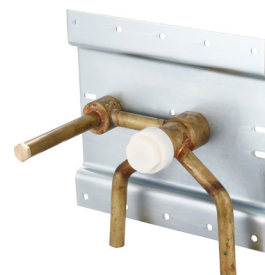


Propane
Torch



Lead-Free
Solder

Model Number: 4200B, 4210B



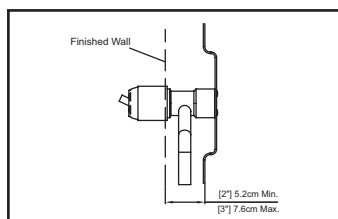
Warnings and Notes:

Check with local plumbing code requirements before installation.
This product should be installed by a local listed plumber.

Do not use plumbers putty on threads.

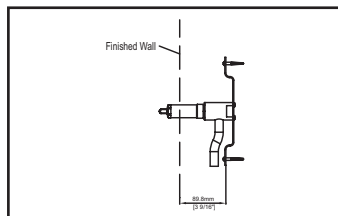
Installation Steps:

Wall-Mount Valve

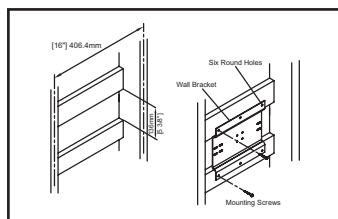


Note* :- The wall bracket requires special framing and support considerations. Please pay special attention to minimum and maximum dimension recommendations noted.

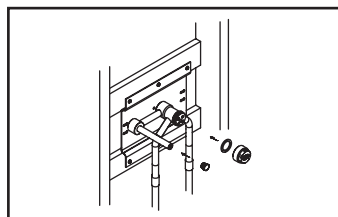
(1a) For 4200B:- Refer to recommended installation distance, improper installation may result in performance and aesthetic issues with the product.



(1b) For 4210B:- Refer to recommended installation distance, improper installation may result in performance and aesthetic issues with the product.



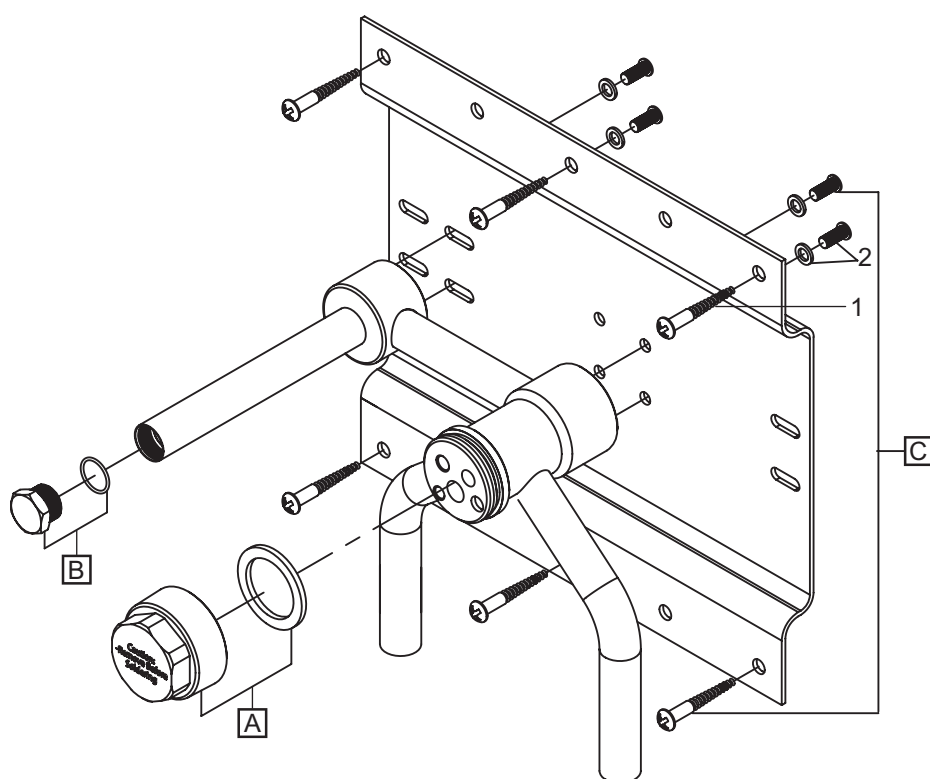
(2) A suggested framing example is shown. Each installation may have different framing requirements than shown. Construct the framing for your installation.



(3) Attach the wall bracket to the framing with six mounting screws provided with the wall bracket. Verify that the installation is correct and leveled. Also verify the wall bracket is firmly secured to the framing.

Exploded Drawing (For 4200B)

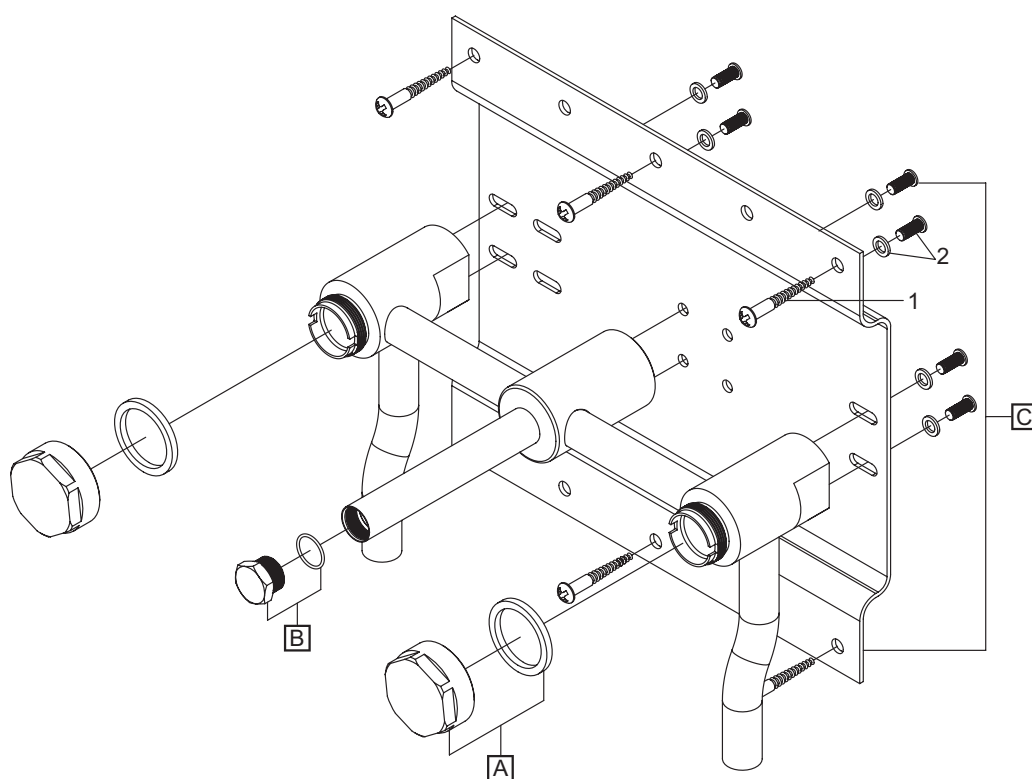
	ITEM #	DESCRIPTION
A	X-4900119	Test Cap
B	X-4900120	Test Plug 9/16" UNEF
C	X-4900054	Mounting Bracket With Screws
1	X-4900055	Mounting Bracket Screws
2	X-4900056	Washers and Bolts



For more care information or trouble shooting inquiries
about your Pioneer product, please call:
Pioneer Industries, Inc. (800) 338-9468
Monday-Friday 8AM to 8PM EST (5AM to 5PM PST)
www.pioneerind.com

Exploded Drawing (For 4210B)

	ITEM #	DESCRIPTION
A	X-4300095	Test Cap
B	X-4900120	Test Plug 9/16" UNEF
C	X-4900054	Mounting Bracket With Screws
1	X-4900055	Mounting Bracket Screws
2	X-4900056	Washers and Bolts



For more care information or trouble shooting inquiries
about your Pioneer product, please call:
Pioneer Industries, Inc. (800) 338-9468
Monday-Friday 8AM to 8PM EST (5AM to 5PM PST)
www.pioneerind.com