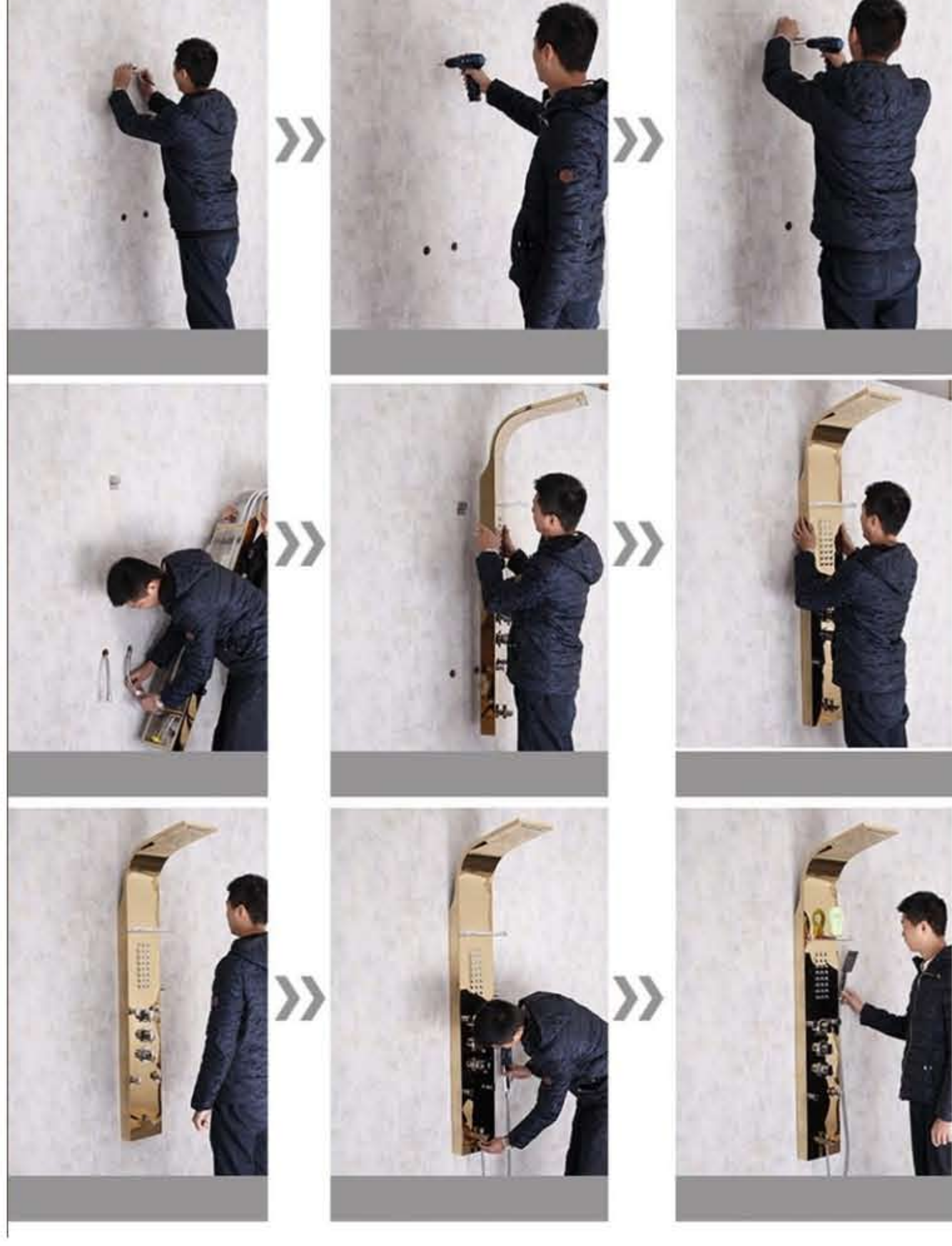


Lenox Shower Panel Column RainFall /WaterFall Shower Head



A. Direct Connect Instructions

IMPORTANT: In order to install this shower panel, simple understanding of plumbing techniques will be necessary. Please contact a professional plumber if you are unfamiliar with plumbing techniques or require assistance.

Prerequisites:

- separate cold and hot water supply lines

NOTE: This shower panel replaces any mixing valve you are currently using.

Step 1
Thank you for your purchase of an AKDY all-in-one shower panel. Begin by roughly measuring the position of the shower panel relative to your height and mark the location desired.

Step 2
Remove the shower panel and locate the position of the mounting brackets (red arrows). Take measurements and then transfer those marks to the location of the wall. Mark the center point of the location of the mounting brackets.



A. Direct Connect Instructions

Step 3
Using a drill, attach the wall mounting brackets with the included hardware. An extra set of hands may be required for the following steps. Lift and locate the hot and cold water lines on the shower panel (red circle).

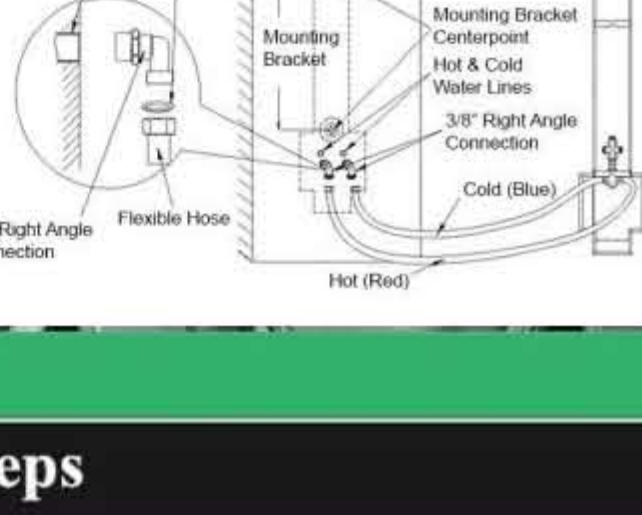
Step 4
Connect the hot and cold water supply lines to the flexible hoses. Be sure to use the included washers. It is recommended a 3/8" right angle connection be installed to better route the flexible hoses (see diagram).

Step 5
Once connected, lift the entire shower panel and hook it to the wall using the mounting brackets. There are two types of mounting brackets used for our shower panels. Check the next page for detailed mounting instructions.

Step 6
Check if the unit is leveled. Test out all shower functions including the water temperature to finish installation.

NOTE: If you're water temperature is either too hot or too cold, please check the hot and cold water lines. The connection may be reversed (cold to hot).

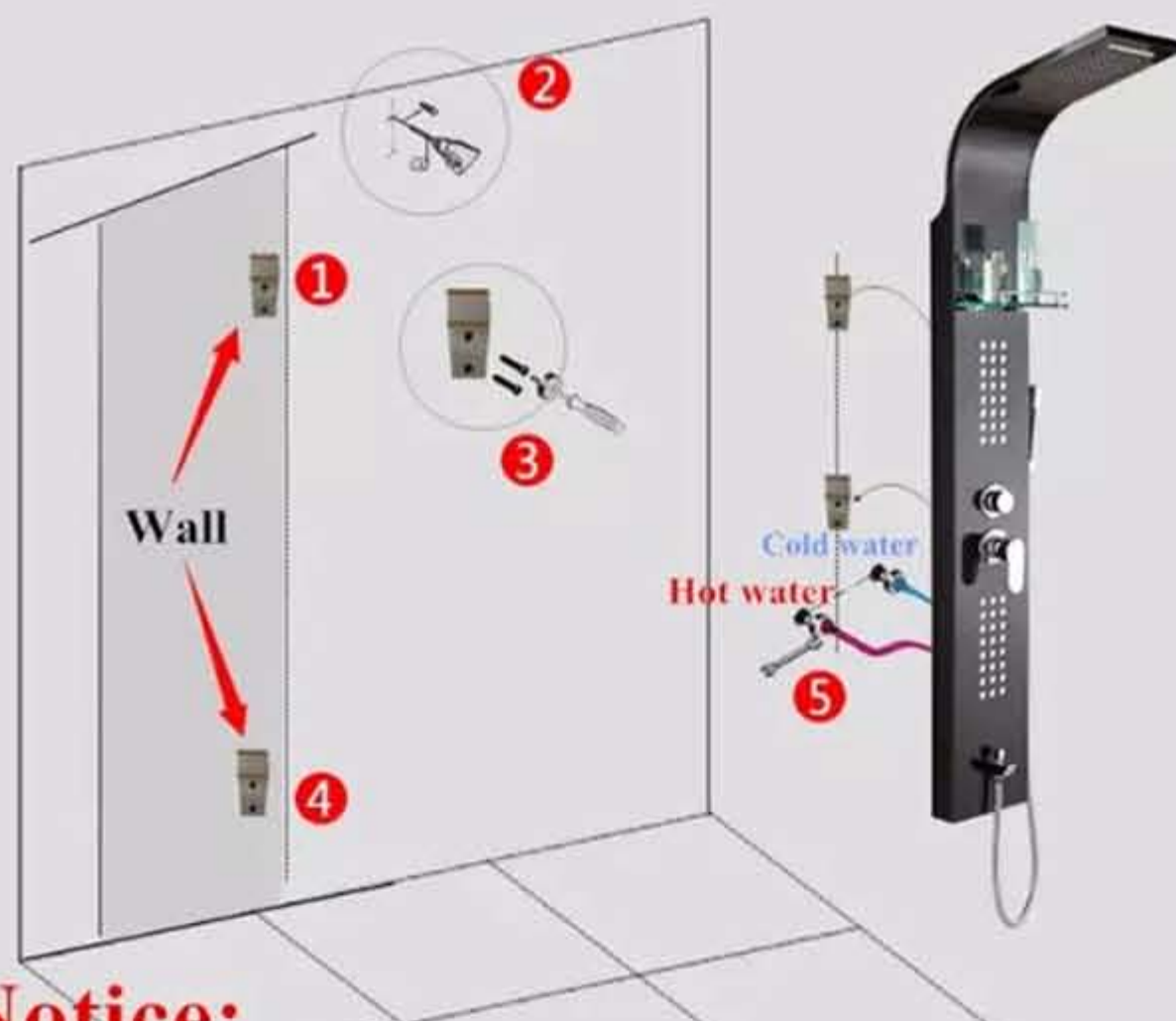
Step 7
Complete the installation by using silicone sealant around the perimeter of the shower panel. Your installation is now complete.



Installation notes

Installation steps

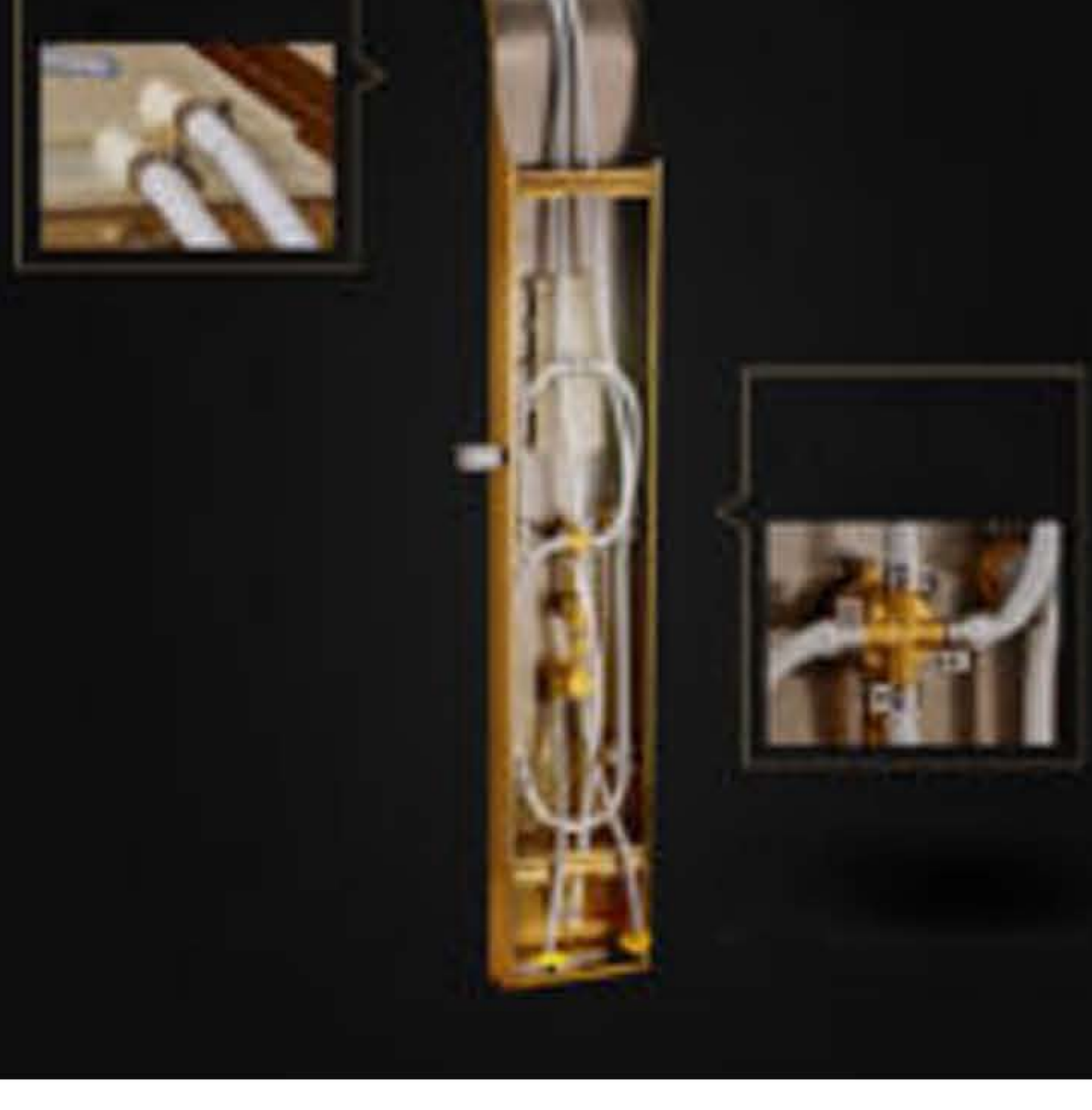
- 1.Fixing the up hook.
- 2.Using the churn drill to make two holes,puting the plastic expansion pipe into the holes.
- 3.Using screws to fix the hook,fixing another hook as this way.
- 4.using the hot and cold water pipe to connect with the hot and cold water inlet.
- 5.Arranging all the pipes,then handing the shower set on the hooks.



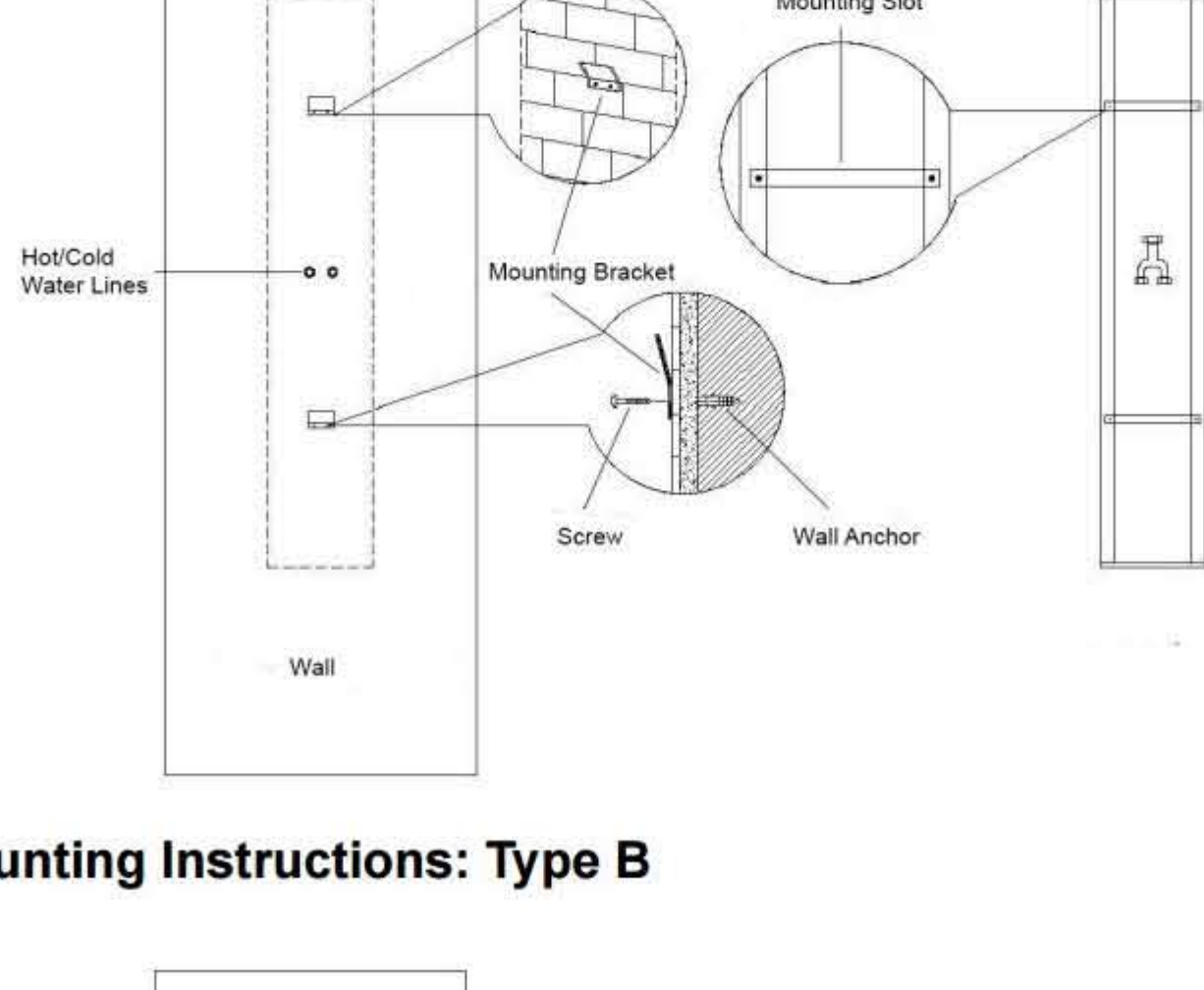
Notice:

- 1.The distance of the hot and cold water inlet is 6-17cm
- 2.The height of the hot and cold water inlet is 20-120cm

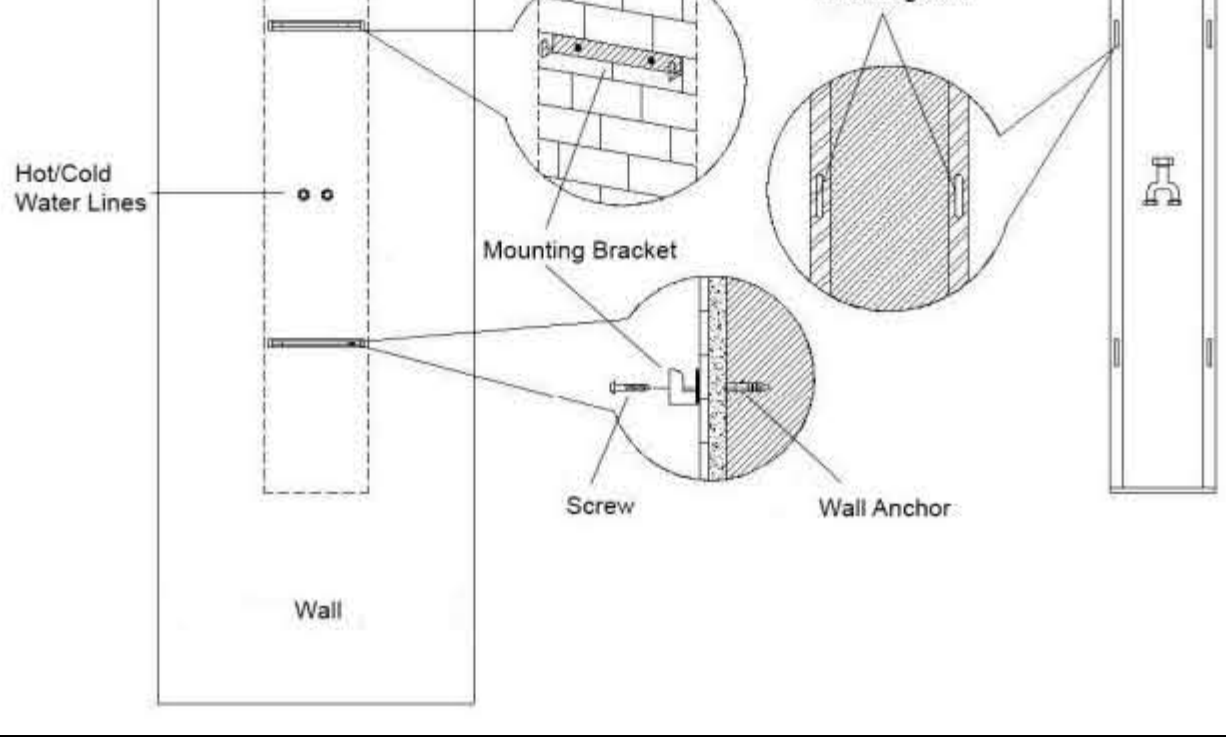
Back Side



Mounting Instructions: Type A



Mounting Instructions: Type B



This General diagram and installation instructions are not intended for any specific model, but is presented as a general guideline for Installations!