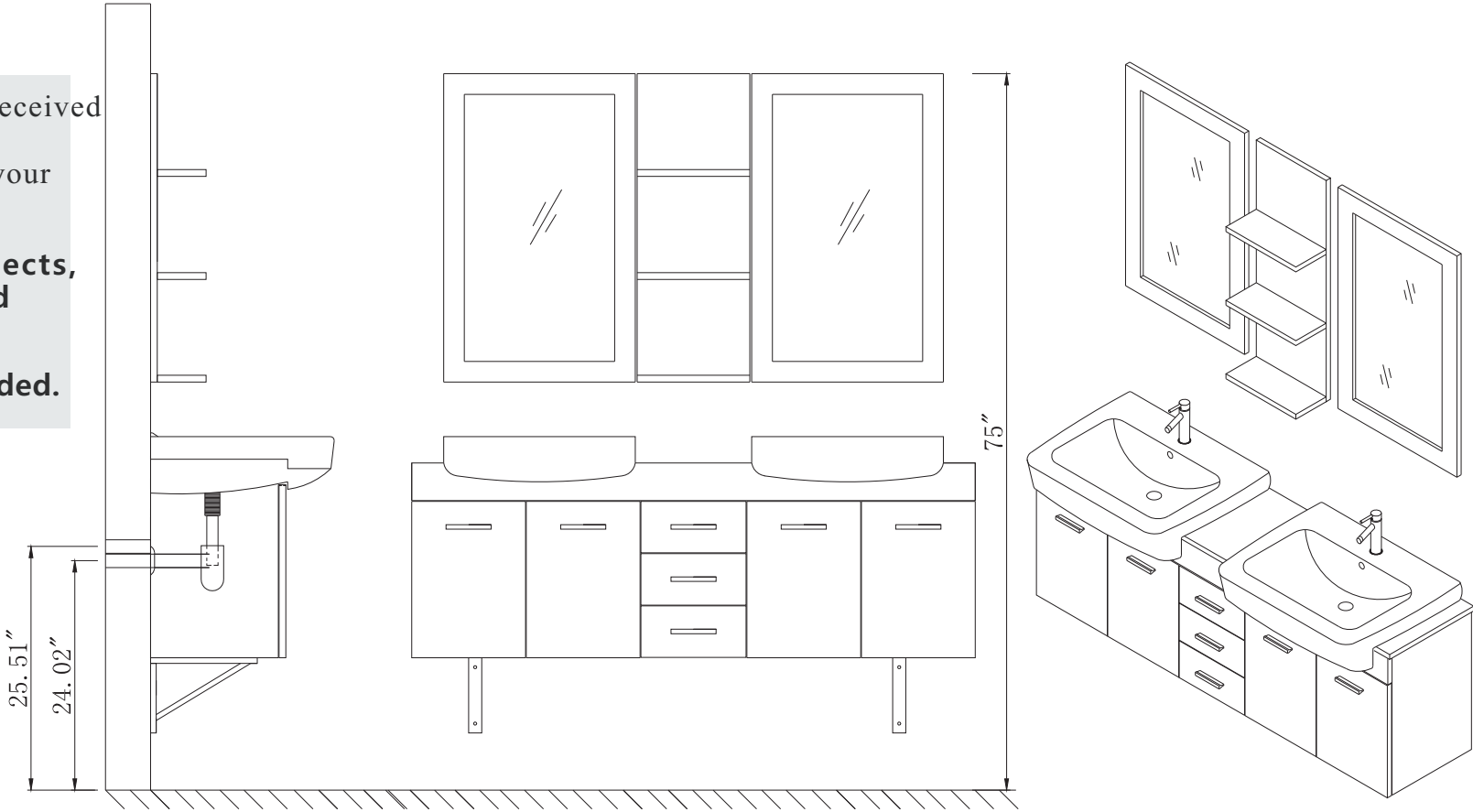
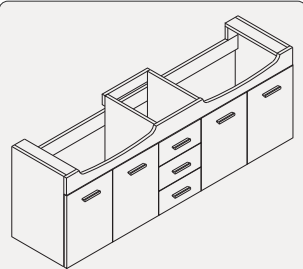
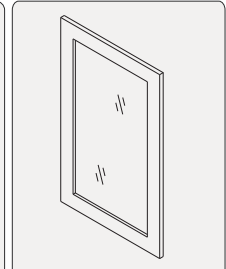
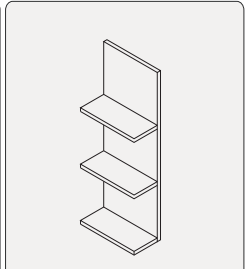
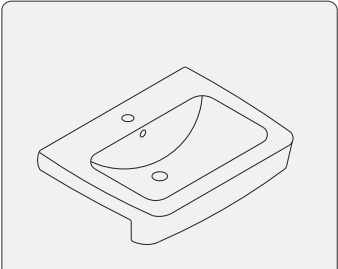
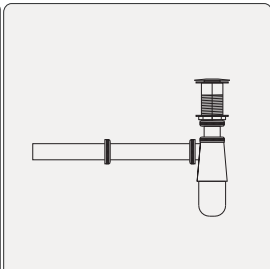
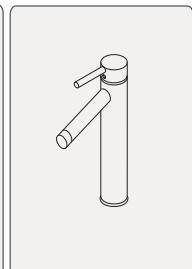
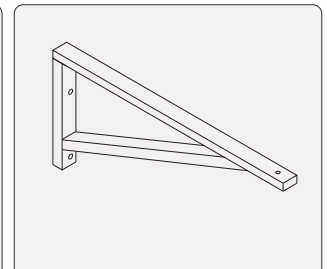
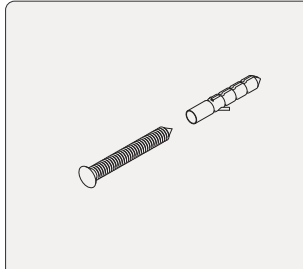


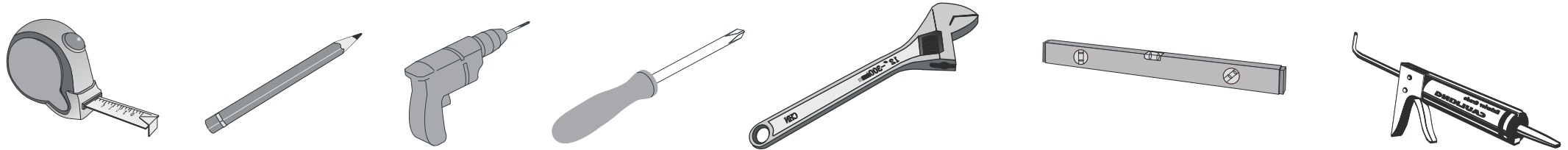
- Prior to **installation** please check received items **against** the **Packing List**
Please report any **missing** items to your local dealer **immediately**.

•Protect all **surfaces** from sharp **objects**,
high heat sources, direct **prolonged**
sunlight and **chemical hazards**.

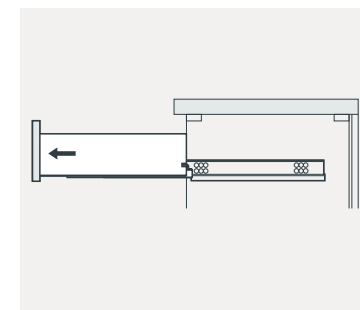
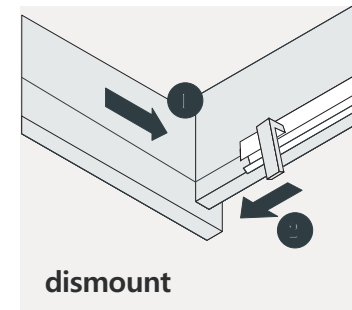
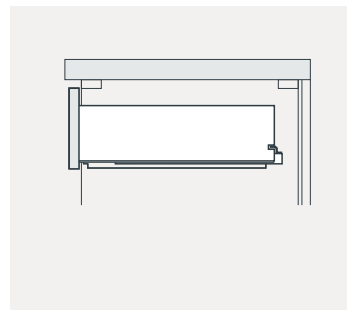
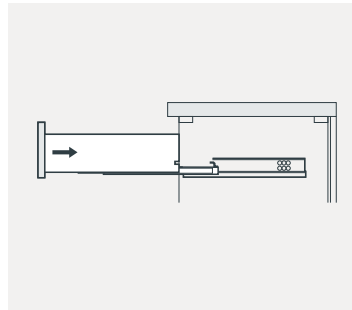
•**Professional** installation **recommended**.
- 

The diagram illustrates the VirtuUSA UM-3059 double vanity unit. The main unit features two ceramic basins, a central storage area with three shelves, and two large cabinets on the sides. Dimensions are provided: a total width of 1504mm, a depth of 360mm, and a height of 518mm. A side view shows the unit's profile with a depth of 25.51 inches and a height of 24.02 inches. An exploded view on the right shows the two mirrors, three wooden shelves, and the two ceramic basins. A faucet and a drain pipe are also shown separately.
- PACKING LIST
- | | | | | | | | |
|--|---|---|---|--|---|---|--|
|  <div>Main cabinet/1</div> |  <div>Mirror/2</div> |  <div>Wooden shelf/3</div> |  <div>Ceramic basin/4</div> |  <div>POP UP+Drain pipe/5</div> |  <div>FAUCET/6</div> |  <div>Matal Bracket /7</div> |  <div>Install screw/8</div> |
|--|---|---|---|--|---|---|--|

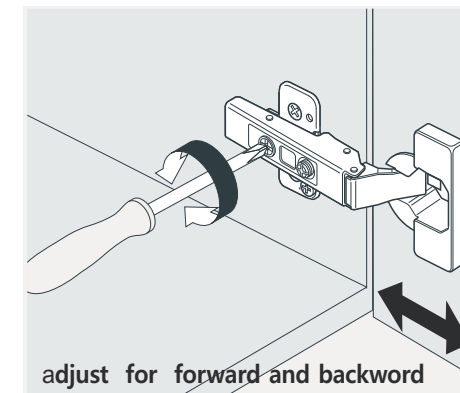
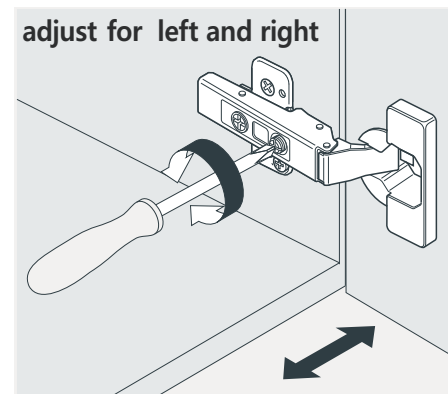
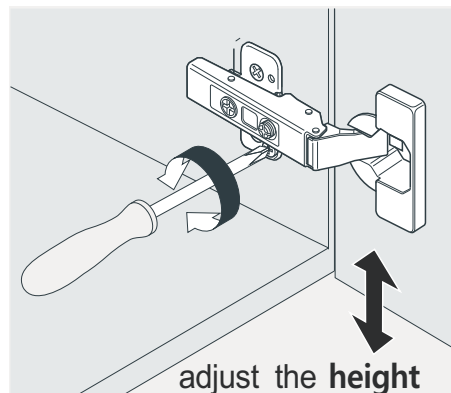
REQUIRED TOOLS



DRAWER SLIDER ATTACHMENT AND DETACHMENT



INSTALLATION AND ADJUSTMENT OF HINGES



INSTALLATION PROCESS

