

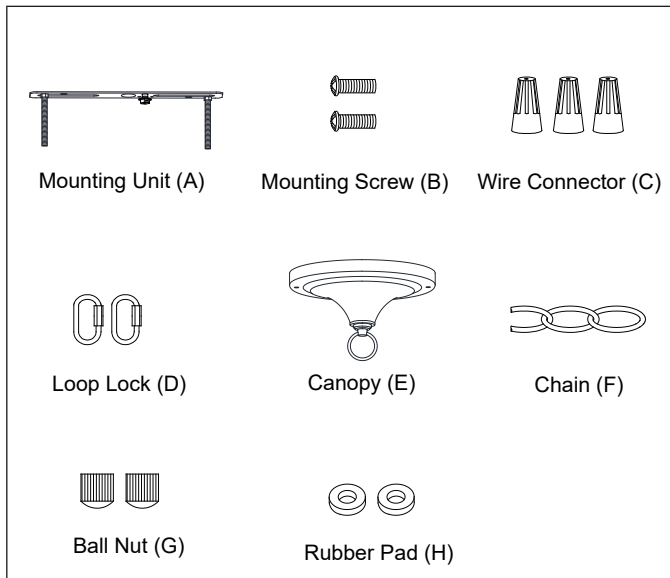
# ASSEMBLY AND INSTALLATION INSTRUCTIONS

T0419

**WARNING:** TO AVOID RISK OF ELECTRICAL SHOCK, BE SURE TO SHUT OFF POWER BEFORE INSTALLING OR SERVICING THIS FIXTURE.

**NOTES:** 1. Before installing, consult local electrical codes for wiring and grounding requirements.  
2. READ AND SAVE THESE INSTRUCTIONS.

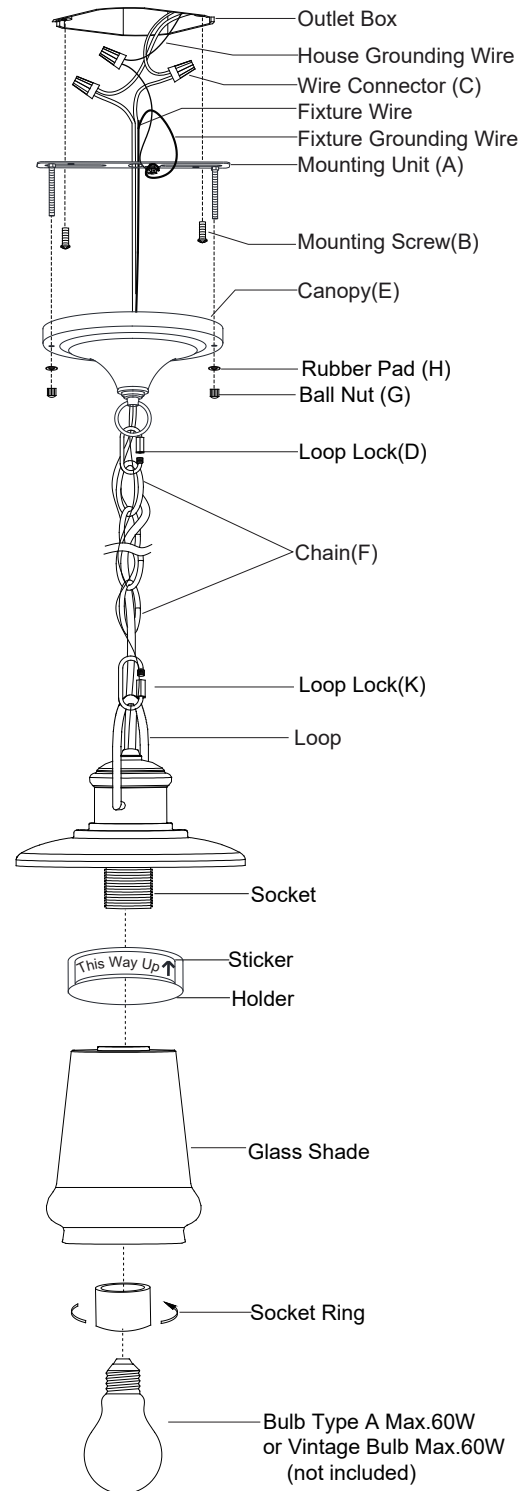
## Hardware Package (included):



## Installation Steps

Turn off the power at fuse or circuit box

1. Carefully unpack the fixture. Lay out all parts on a clean surface.
2. Connect the chain:
  - Determine length of chain needed to achieve desired fixture height. (To remove excess chain section, use pliers to bend link open.)
  - Weave the fixture wires and fixture grounding wire through the chain and canopy.
3. Connect one end of the chain to the loop using a loop lock.
4. Connect another end of the chain to top loop by using another loop lock.
5. Pull out the source wires from the outlet box. Make wire connections using wire connectors as follows:
  - Connector the smooth-coated wire (marked) from the fixture to the black wire from the power source.
  - Connect the ribbed-coated wire (unmarked) from the fixture to the white wire from the power source.
  - Attach the fixture grounding wire to the mounting strap with the green grounding screw, and then connect it to the house grounding wire with a wire connector.Carefully put the wires back into the outlet box.



6. Attach the canopy to the mounting unit, then secure it with two rubber pads and two ball nuts.
7. Install the holder, glass shade to socket using socket ring. ( Make Sure the "Holder" is install with correct way up, Install incorrect way up will result damage to the glass. Remove this sticker after installation is complete.)
9. Install a bulb (not included). Check relamping label at socket area or packaging for maximum allowed wattage.

**Turn on the power at fuse or circuit box**

**The following parts are available for re-order if damaged or missing.**

**Spare Parts List:**



Mounting Unit (A)



Mounting Screw (B)



Wire Connector (C)



Loop Lock (D)



Canopy (E)



Chain (F)

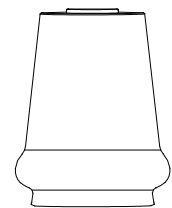


Ball Nut (G)

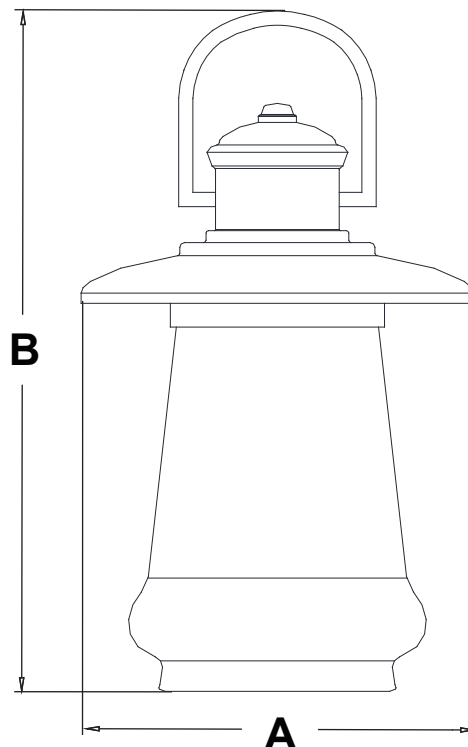


Rubber Pad (H)

Assembly Kit  
5894MM (1SET)



Glass Shade 9983CS



A: 6-1/2"

B: 10-1/2"