

# ALLORA USA® Bathrom Faucet

**A-6560®**  
**Tulip series**

## Features

- Premium material construction for durability and reliability
- Matching Drain Set
- Ceramic dis valves exceed industry longevity standrads.
- 100% Pressure System Tested
- Three hole installation.
- Life time warranty



## Material

- Premium metal construction.
- Allora USA finishes resist corrosion and tarnishing.

## ALLORA USA® Faucet Lifetime Limited Warranty

- Lifetime limited Warranty to the original home owner
- 10 years limited warranty when used in multi-family installation
- 5 year limited warranty when used in commercial installation
- visit [www.alloraus.com](http://www.alloraus.com) for complete details and limitations

**CSA B651**

## Codes/Standards



ASME A112.18.1/CSA B125.1  
NSF 61  
NSF 372

DOE - Energy Policy Act 1992  
ADA  
ICC/ANSI A117.1  
CSA B651

## Available Color/Finishes

*Color tiles intended for reference only.*

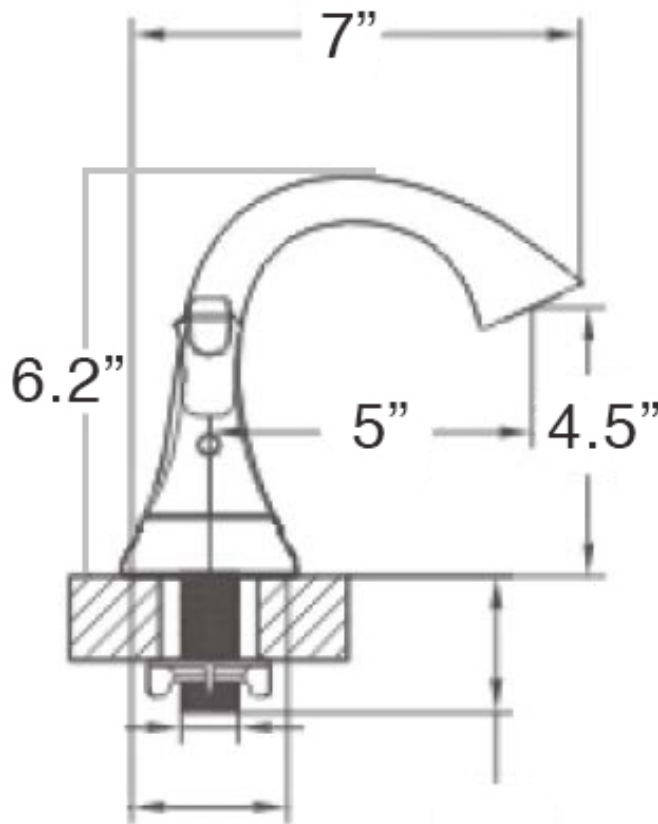
Color	Code	Description
-------	------	-------------

	C	Chrome
	BN	Brush Nickle

# ALLORA USA® Bathroom Faucet

**A-6560®**

Tulip Series



## Technical Information

All product dimensions are nominal.

### Faucet:

Flow rate: 1.8 gal/min (6.8 l/min)

Pressure: 60 psi (4.1 bar)

## Notes

Install this product according to the installation guide.

ADA, OBC, CSA B651 compliant when installed to the specific requirements of these regulations.