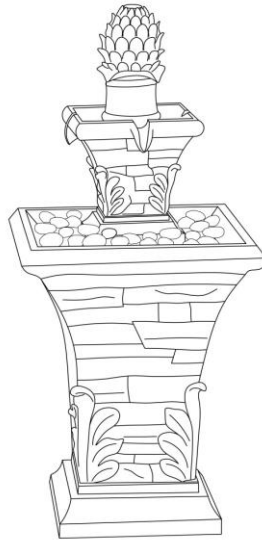


Thank you for choosing Sunnydaze Decor. We stand behind our brand and the quality of the items we sell. Replacement parts or products will be sent at our discretion, within the one-year warranty period. Proof of purchase, with the date of purchase as well as photos of the defective merchandise, must be provided. If you have any questions, comments or concerns please feel free to contact us by phone at: **888-881-4668**. You may also contact us by email: customerservice@serenityhealth.com, or via our webpage at: www.serenityhealth.com/contact-us/



Square 2-Tier Stacked Stone look Outdoor Fountain



PART	DESCRIPTION	QUANTITY		PART	DESCRIPTION	QUNAITITY
A	FOUNTAIN TOPPER	1		E	LED ROPE	1
B	MIDDLE PEDESTAL	1		F	WATER PUMP	1
C	BASE PEDESTAL	1		G	EVA STOPPLE	1
D	PEBBLE STONES	1 BAG		H	ADAPTOR	1

ASSEMBLY INSTRUCTIONS:

Step 1: Place the base pedestal (C) on a level surface. Route the water pump(F)'s power cord out through the plastic tube in the base pedestal(C), lay the water pump(F) in the bottom of the fountain basin the base pedestal(C), and then route the water pump(F)'s power cord through the base pedestal(C), the cord exits through the bottom slot of the base pedestal(C). Lastly insert the EVA stopple(G) in the top of the plastic tube.

Step 2: Insert, twist and lock the fountain topper(A) to the middle pedestal(B), make sure the water tube goes through the plastic tube in the middle pedestal(B).

Step 3: Connect the water tube to the outlet nozzle of the water pump(F).

Step 4: Route the LED rope(E) out from the hole on back side of the middle pedestal(B). Connect the LED rope(E) with the water pump(F).

Step 5: Put the completed assembled upper part of the fountain on the base pedestal(C).

Step 6: Press both ends of the LED rope in the slots that already fixed on the middle pedestal(B), the LED rope(E) will be fixed around the middle pedestal (B).

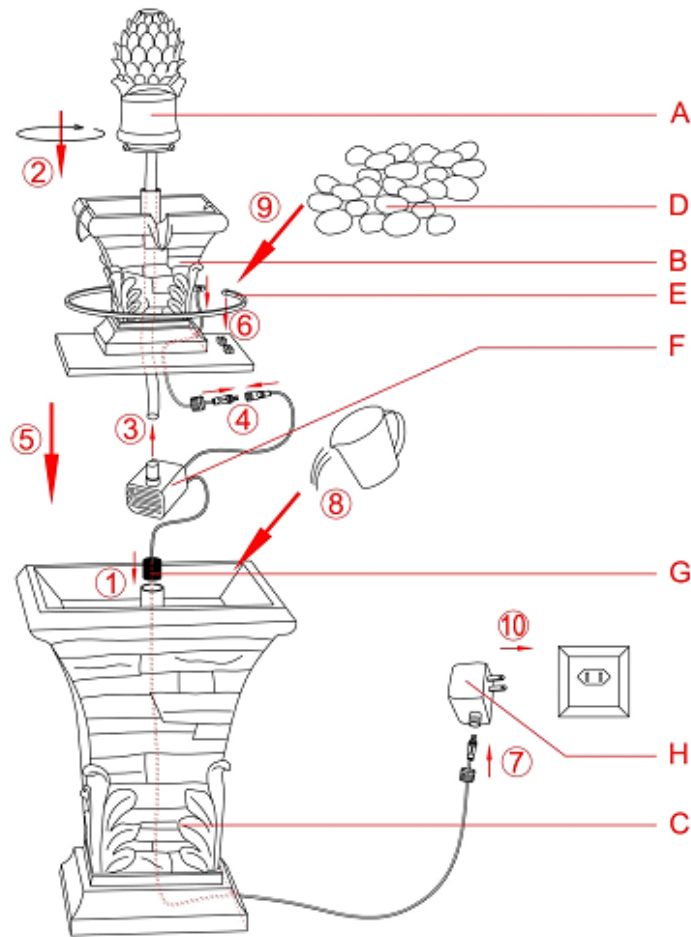
Step 7: Connect the adaptor(H) to the water pump's power cord.

Step 8: Fill the fountain basin in the base pedestal © and the small basin on the middle pedestal (B) with

water. Make sure the water pump (E) is submerged in the water completely.

Step 9: Add included pebble stones on the fountain

Step 10: Plug the pump in and enjoy the water fountain.



WARNING



Be careful not to spill water onto the plug of the pump. Create a drip loop with the power cord before plugging. DO NOT allow the pump to run dry.