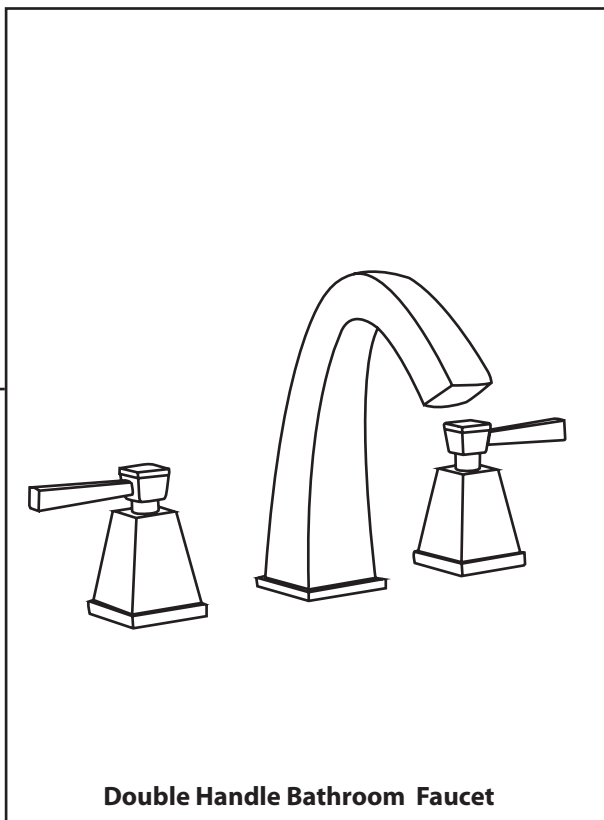


# Installation Instructions & Warranty



**RUVATI®**

## Double Handle Bathroom Faucet



- Brushed Nickel finish
- Kerox™ Ceramic Disc Cartridges
- Solid brass construction
- Up to 2" deck thickness
- 3 hole installation(standard 1-3/8" hole)



**Model: RVF5120BN**  
***Double Handle***  
***Bathroom Faucet***

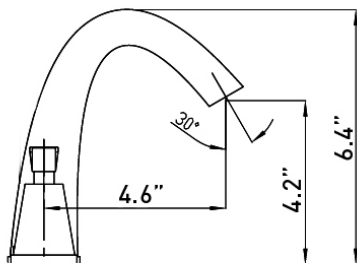
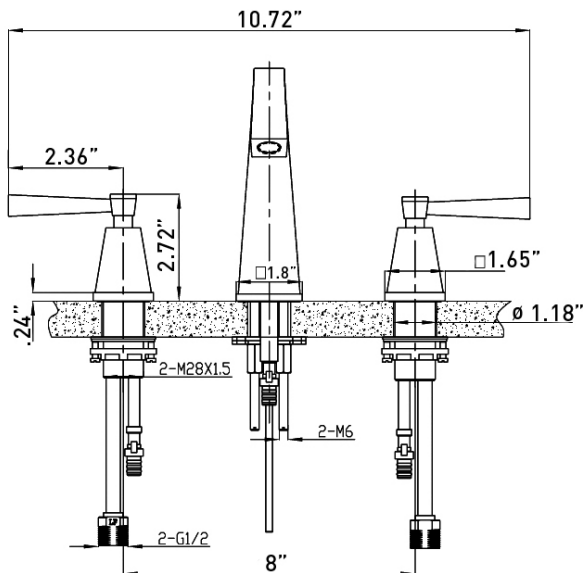


Certified and listed by cUPC to meet Industry Codes  
and Standards for USA & Canada



This product complies with the new federal "lead-free" requirement of the 2014 Reduction of Lead in Drinking Water Act, as well as state legislations in California (AB-1953) and Vermont (S-152).

- Overall Spout Height: 6.4"
- Spout Height: 4.2"
- Spout Reach: 4.6"
- Overall Handle Height: 2.72"
- Handle Length: 2.36"



## Tools Needed



Groove point  
pliers



Adjustable  
wrench



Phillips head  
screwdriver

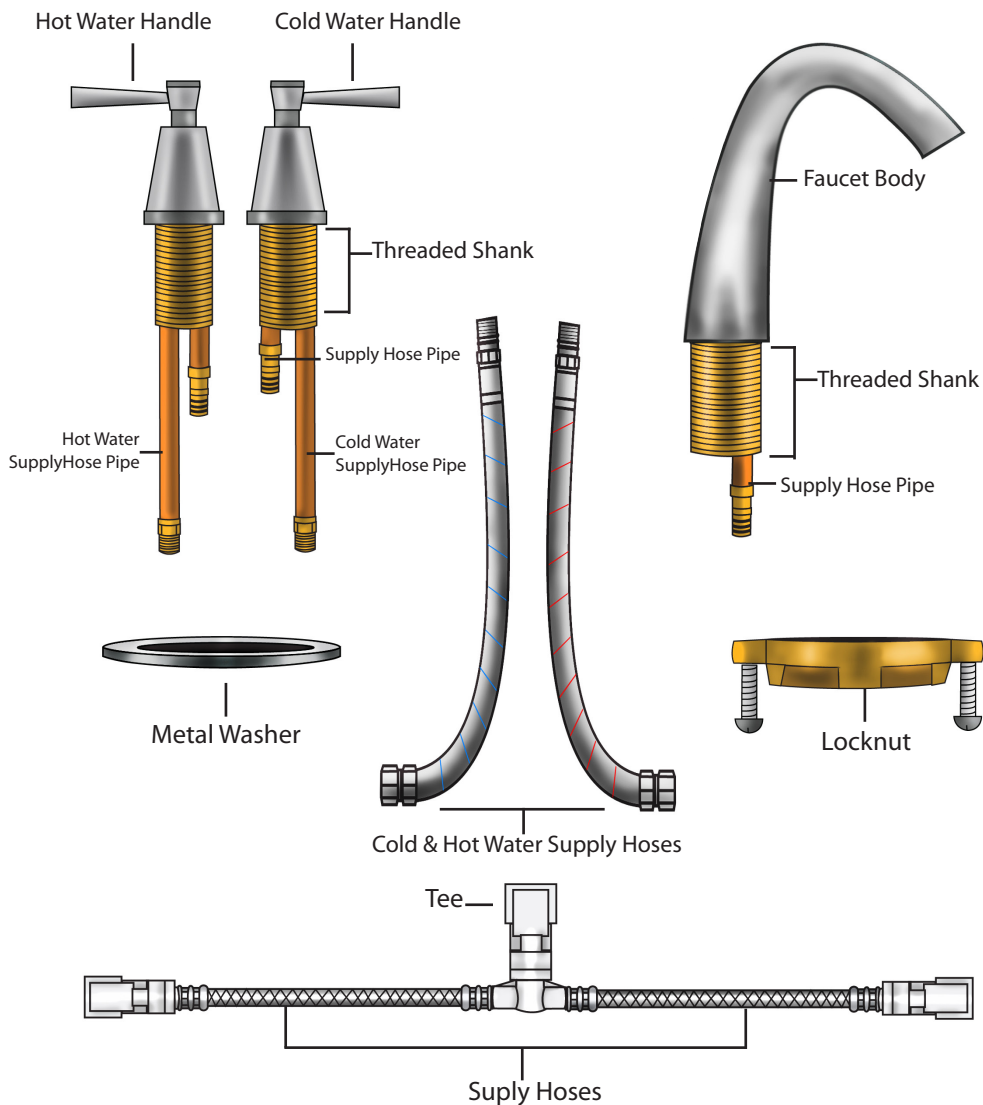
## Safety Tips WARNING

- Ruvati recommends that this product only be installed by a licensed professional.
- Always shut off the water supply before removing the existing faucet and/or installing a new one. Open the hot and cold knobs on the existing faucet in order to release built up pressure.
- Always wear safety glasses when cutting or soldering water supply lines.
- Keep the drain covered to avoid losing parts.
- Ruvati is not liable for any damage to product, countertop, or sink due to improper installation.

## Care and Maintenance

- To preserve the metallic finish of your Ruvati faucet, clean periodically with a non-abrasive cleaner and a soft cloth. Using harsh chemicals or materials such as steel wool can scratch or dull the finish of your faucet and/or void your warranty.
- After installation, keep the area directly below the hose and weight clear of any objects such as bottles and cleaning supplies that may interfere with the functionality of the faucet.

## In the Box



## Installation

**1.** Remove rubber washer, metal washer, and locknut from the threaded shanks of the faucet body and two handles (**Figure 1**). If you look closely, you will find a black square rubber gasket sitting in a groove on the underside of the base of the faucet, just above the threaded shank. Do not remove this square rubber gasket.

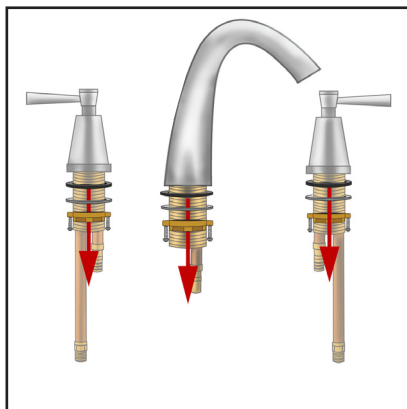


Figure 1

**2.** Place the faucet body in the middle hole of the deck/sink. Then place the handles into the remaining holes of the deck/sink. Make sure the handle with the cold water label is placed in the hole on the right and the handle with the hot water label is placed in the left hole (**Figure 2**). A standard 1-3/8" hole is required for this faucet.

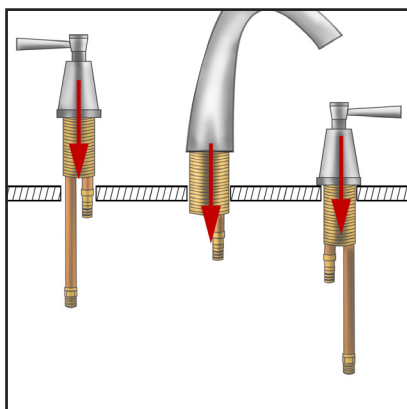


Figure 2

**3.** From underneath the deck/sink, slide the rubber washer followed by the metal washer all the way up the threaded shank of the faucet (**Figure 3**).

**4.** Screw the locknut all the way up the threaded shank of the faucet until tight. Then using a Phillips-head Screwdriver, tighten the screws of the locknut until tight (**Figure 3**).

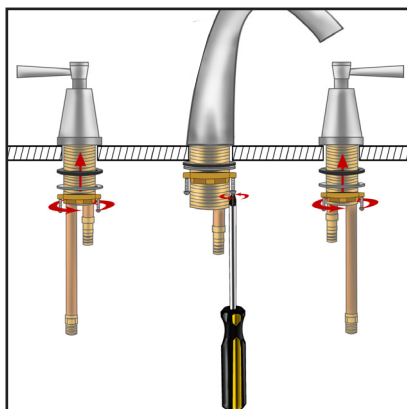


Figure 3

5. Attach the tee to supply hose pipe of the faucet body by inserting the tee onto the end of the supply hose pipe until it will go up no further (**Figure 4**).

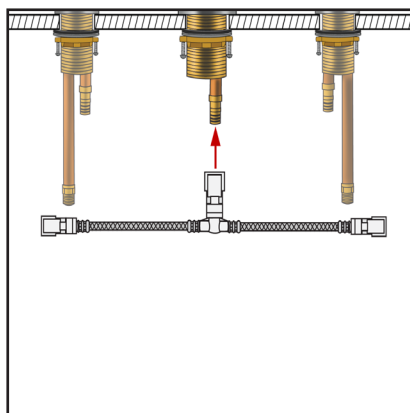


Figure 4

6. Now, connect the cold water supply hose to the end of the cold water supply hose pipe by inserting the supply hose onto the end of the hose pipe until it will go up no further. Do the same for the hot water hose (**Figure 5**).

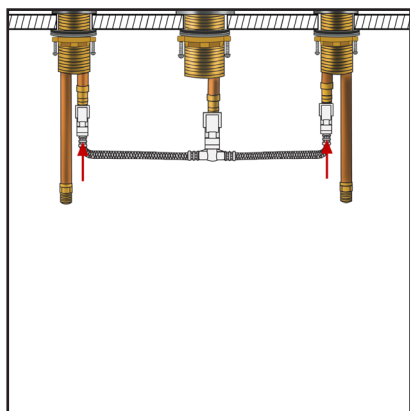


Figure 5

7. Attach the hot and cold water supply hoses to the handles by screwing the end of each hose to the hot/cold water supply pipes. Use an adjustable wrench or a pair of groove point pliers to make sure each end is tight (**Figure 6**).

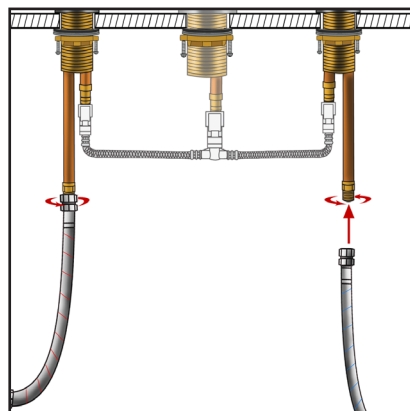


Figure 6

8. Then screw the remaining ends of the hot/cold supply hoses to the corresponding hot and cold water supply using an adjustable wrench or pliers (**Figure 9**).

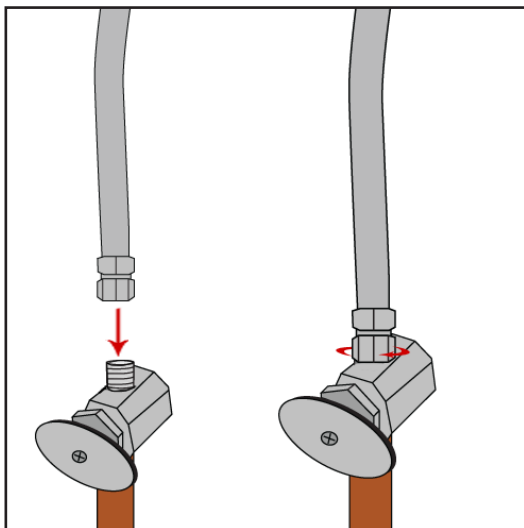


Figure 7

9. Turn water supply on (**Figure 8**). Test the faucet by turning it on and off. Make sure there is good water flow and no leaks. Inspect the faucet above and below the countertop to make sure there are no leaks. If there is a leak, turn the water supply off and contact Ruvati Support.

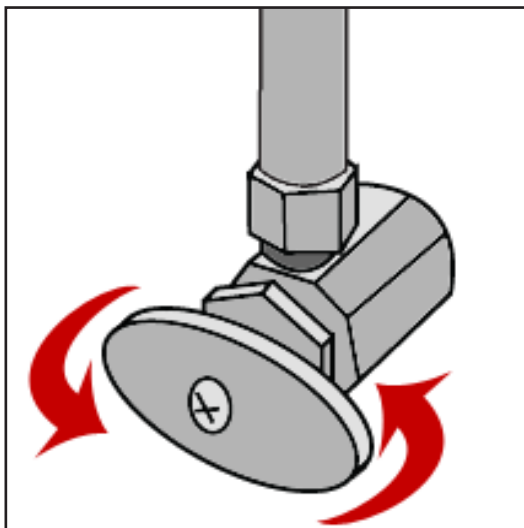
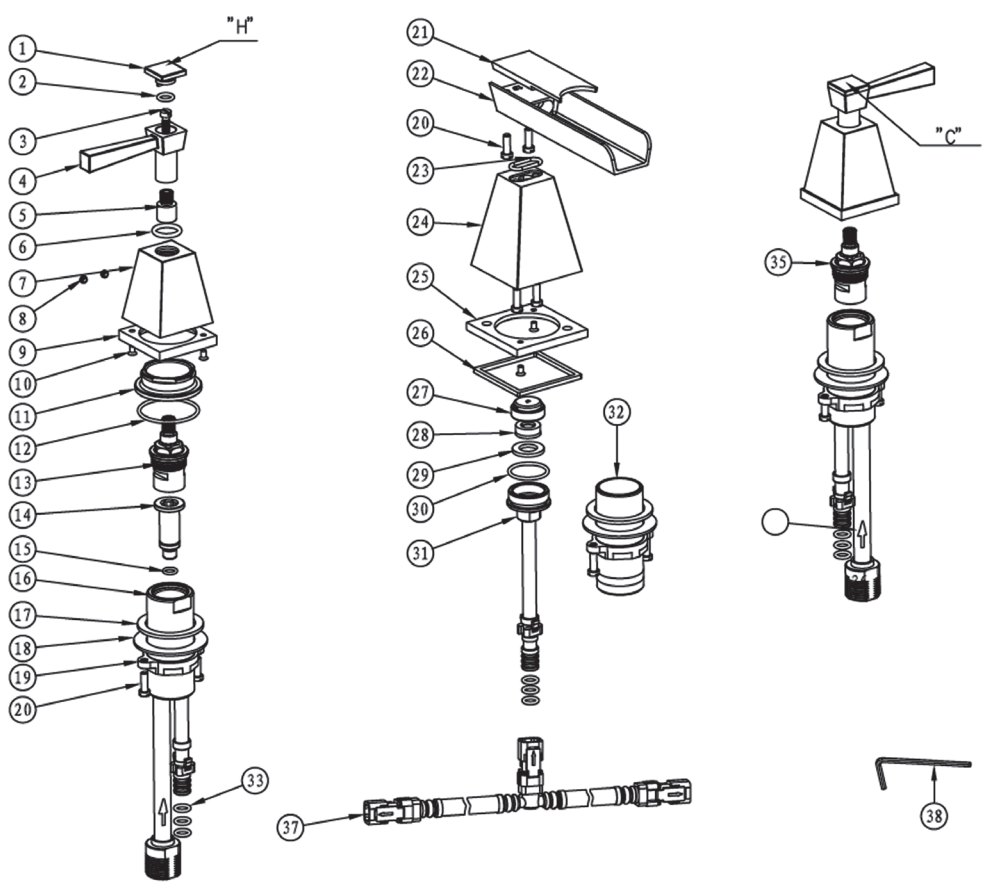


Figure 8

## Faucet Parts Diagram





## Trouble-Shooting Guide

Issue	Cause	Solution
The water will not completely turn off.	There is a dirty, worn out, or damaged washer in the cartridge.	Check to see if the ceramic disc is dirty or damaged by removing the handle and the cartridge.
Water is leaking from under the handle.	The adjusting ring or cap has become loose.	Tighten the adjusting ring or cap.
The aerator is leaking or has an inconsistent water flow pattern.	The aerator does not fit correctly or has become dirty.	Check the rubber packaging of the aerator or replace it.

## RUVATI LIMITED LIFETIME WARRANTY

At RUVATI, we stand behind our products with a limited lifetime warranty on all faucets. We want every RUVATI customer to be a satisfied customer.

**REGISTER YOUR PRODUCT.** By taking just a few minutes to register, you can improve your experience with Ruvati and enjoy more efficient Warranty Support. Visit [www.ruvati.com](http://www.ruvati.com)

Should you experience any defects in materials or workmanship within the warranty period, Ruvati will repair or replace the defective product, subject to the following conditions:

- Any claim made under this warranty must include a copy of a valid proof of purchase showing the date and place of purchase.
- Our obligation under this warranty is to the original purchaser only, and may not be transferred.
- Product replacement does not include shipping costs or labor installation costs.
- This warranty applies to residential installations only.
- Ruvati reserves the right to examine product in question and its installation prior to replacement.
- If an identical replacement product is not available, Ruvati reserves the right to replace the defective product with a similar product.

This warranty relates to defects in manufacture, materials or workmanship in a Ruvati faucet supplied for installation into domestic premises in the United States. It does not extend to:

- Damage resulting from failure to maintain the product in accordance with the Care and Maintenance instructions provided with the product.
- Normal wear and tear, scratches or accidental damage.
- Faults arising from improper use and/or installation.

All incidental or consequential damages are specifically excluded. No additional warranties, express or implied are given, including but not limited to, any implied warranty of merchantability or fitness for a particular purpose. Some states do not allow the exclusion or limitation of incidental or consequential damages or limitations on how long an implied warranty lasts, so the above limitations or exclusions may not apply to you.

This warranty gives customer specific legal rights, and customer may also have other rights which vary from state to state.

When requesting warranty service, you will need to provide:

1. an approved Return Merchandise Authorization number (RMA) issued by Customer Service
2. a dated, valid proof of purchase (payment receipt from an authorized Ruvati reseller)
3. a description of the problem

Items must be properly and safely packed in such a manner to prevent damage to the part or product during shipment. For your safety, please ship via insured carrier which employs package tracking.

After warranty service is completed, any repaired or replacement parts/products will be return shipped via Standard Ground service to the customer free of charge. Upgraded expedited shipment is available for a fee.

Ruvati will not service received items when:

1. The item is inspected and found to be not covered by the warranty.
2. The item is inspected and found to be damaged during shipment due to lack of proper packaging.

Return shipment of such products will be at the expense of the customer.

For products that are discontinued and no longer serviceable and/or replaceable, a pro-rated credit towards a purchase of another similar Ruvati brand product will be issued.

For Warranty Services, please contact:

1-855-4-RUVATI

[www.ruvati.com](http://www.ruvati.com)

[support@ruvati.com](mailto:support@ruvati.com)

Ruvati USA, Inc.

404 W Powell Ln. Ste 505

Austin, TX 78753

# RVF5120BN

---

REGISTER YOUR PRODUCT. By taking just a few minutes to register, you can improve your experience with Ruvati and enjoy more efficient Warranty Support. Visit [www.ruvati.com](http://www.ruvati.com)



Tel. (855)478-8284 • Fax (855)239-8053 • email: [support@ruvati.com](mailto:support@ruvati.com)  
**[www.ruvati.com](http://www.ruvati.com)**