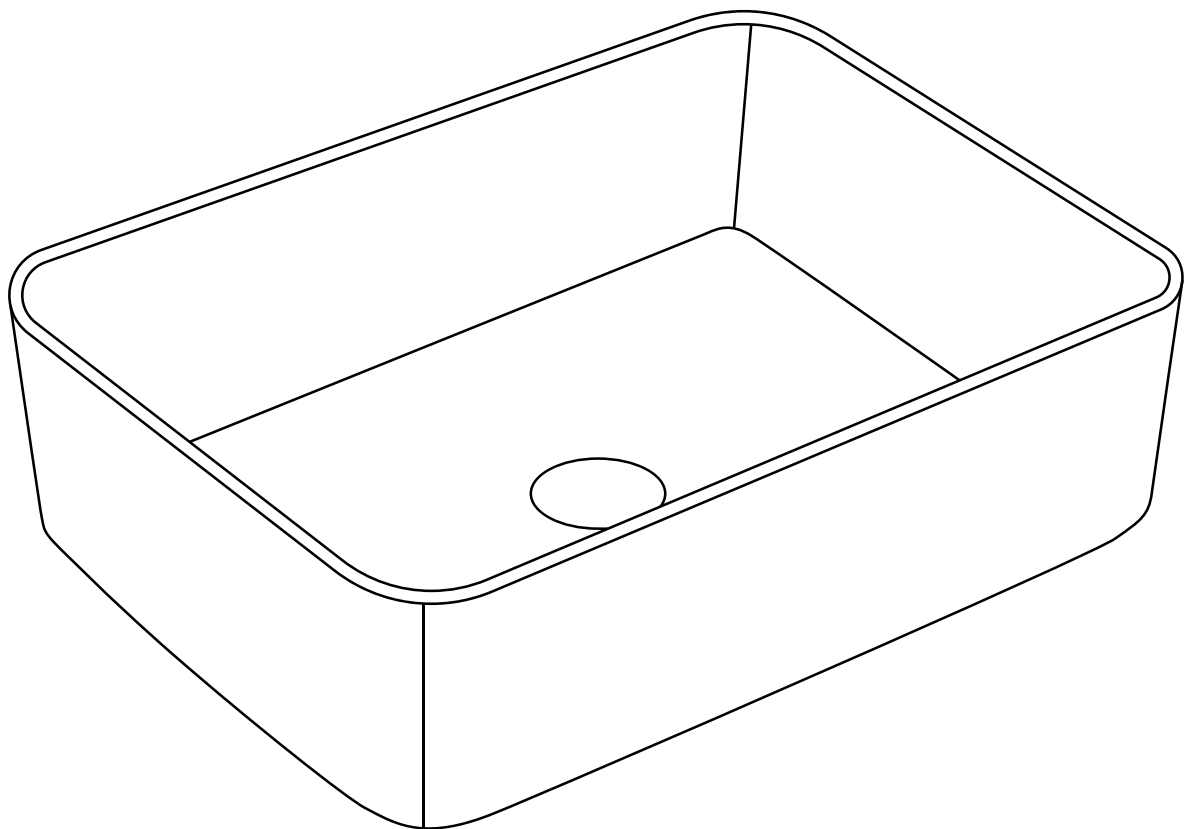


INSTALLATION INSTRUCTION

DeerValley®

Ceramic Vessel Bathroom Sink





Prior to Installation:

- Observe and comply with all building and plumbing codes.
- As our basins are handcrafted and dimensions are approximate, we recommend using the actual basin for the cutout.
- Use 100% Silicone (non-water based) for all installations.
- Ensure adequate space behind the basin for faucet and backsplash, including the full range of motion for faucet handles and spouts.
- Make sure a watertight seal exists on all drain connections.
- Do not place basin directly on floor. After unpacking, place basin on protective material such as packing materials.
- Remember to always use non-abrasive cleaners on DeerValley sinks.

General Recommendations:

Please read installation instructions thoroughly before installing the vessel sink.

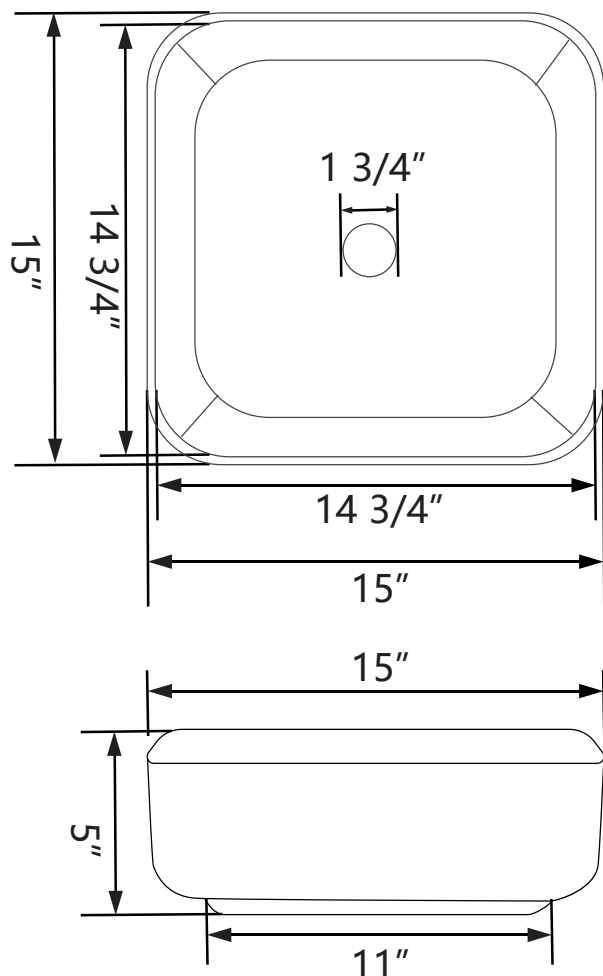
Be sure to use proper tools and always wear proper personal safety accessories for your protection.

**If you have any questions or concerns
please contact us:**

312-626-9466

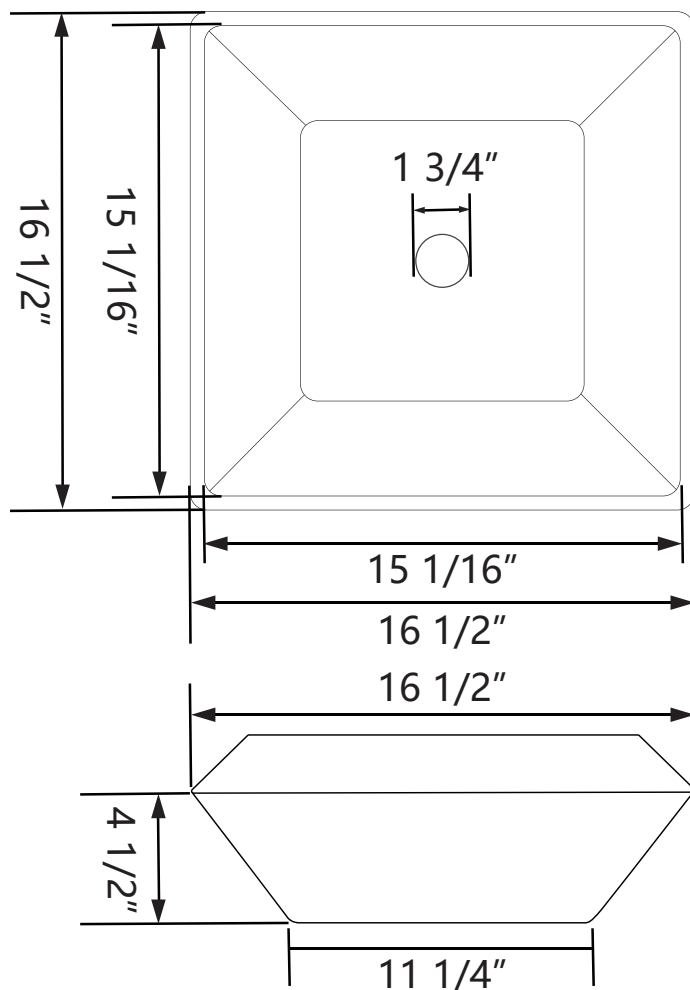
service@deervalleybath.com

1. DIMENSIONS



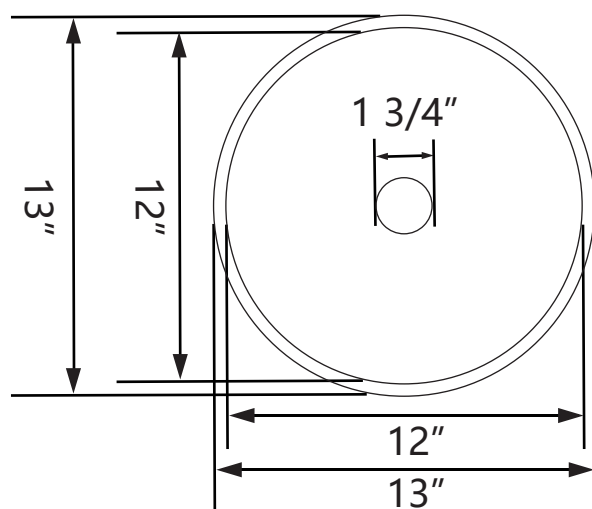
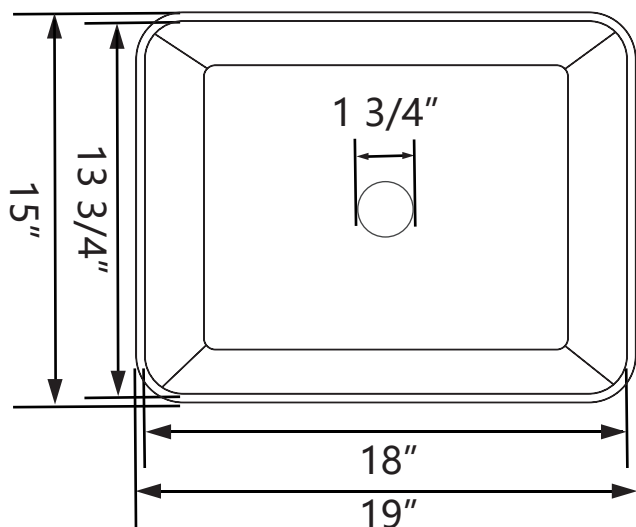
DV-1V021

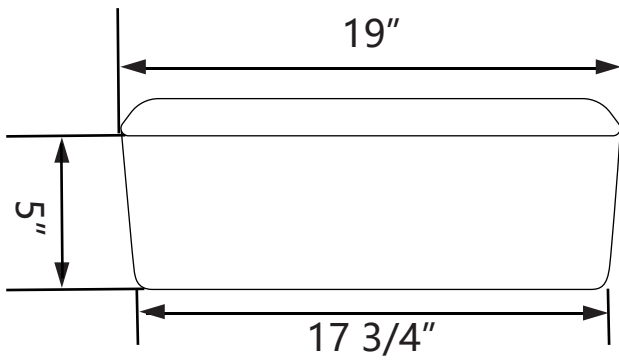
15" * 15" * 5"



DV-1V022S

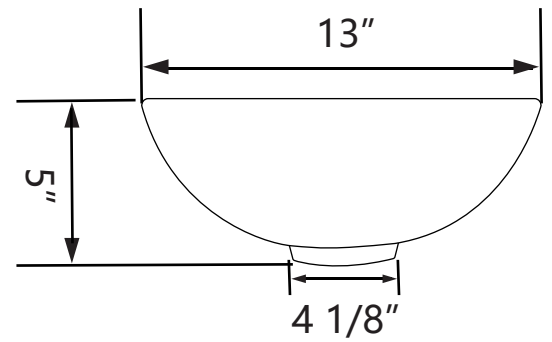
16-1/2" * 16-1/2" * 4-1/2"





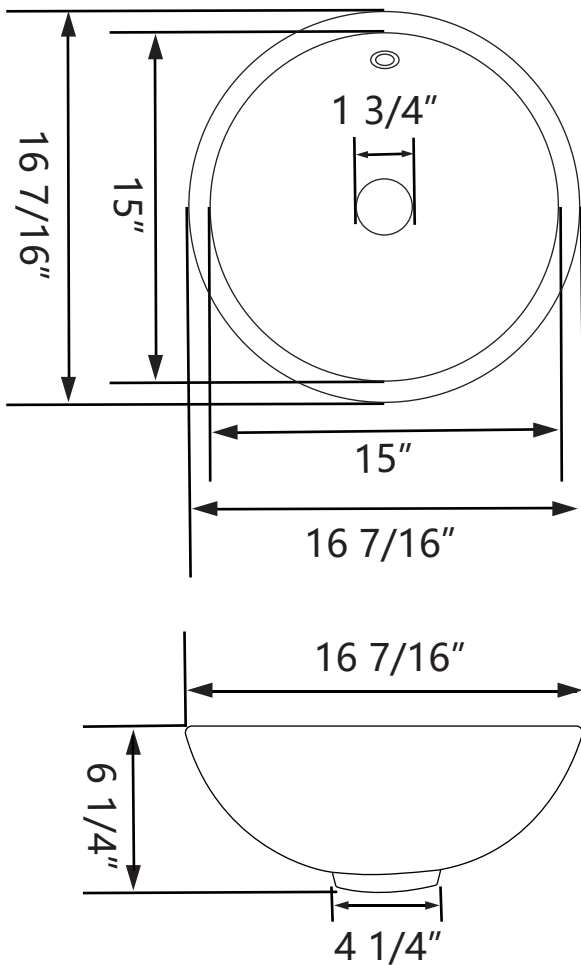
DV-1V031

19" * 15" * 5"



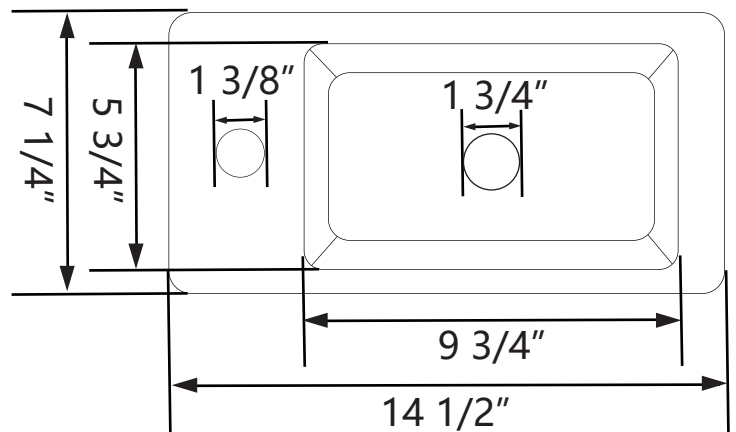
DV-1V061

13" * 13" * 5"



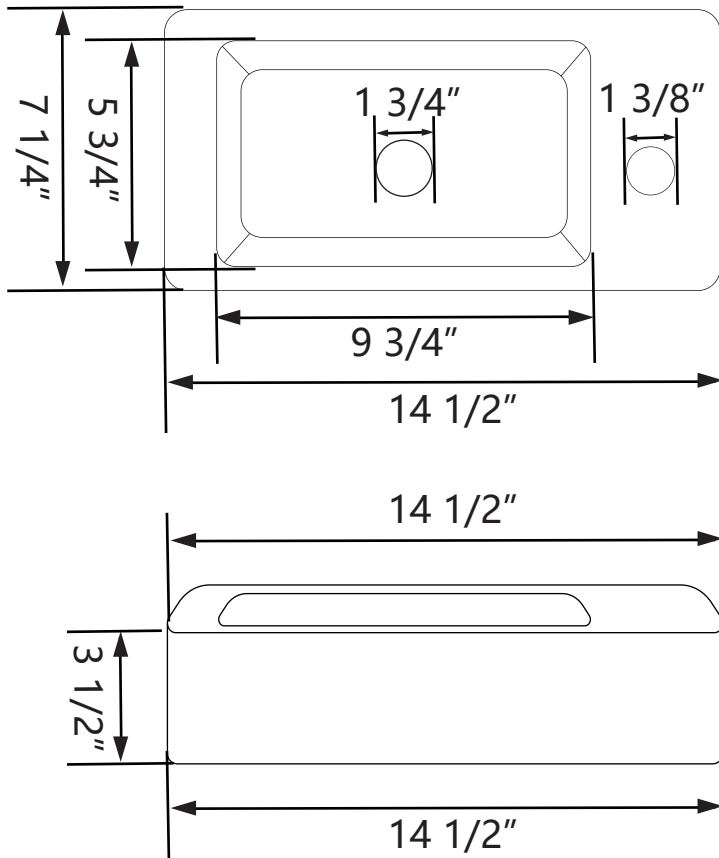
DV-1V062

16-7/16" * 16-7/16" * 6-1/4"



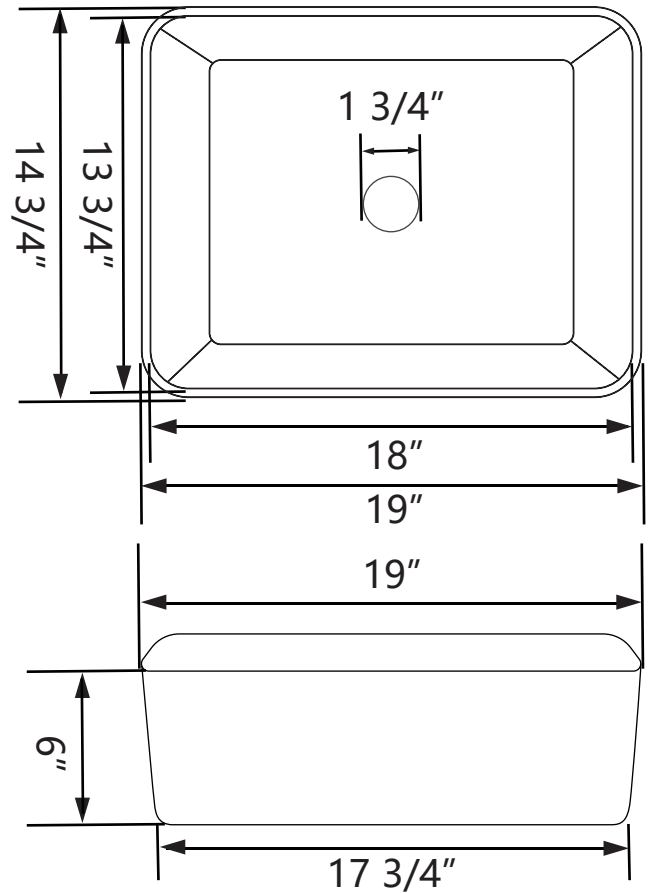
DV-1V081L

14-1/2" * 7-1/4" * 3-1/2"



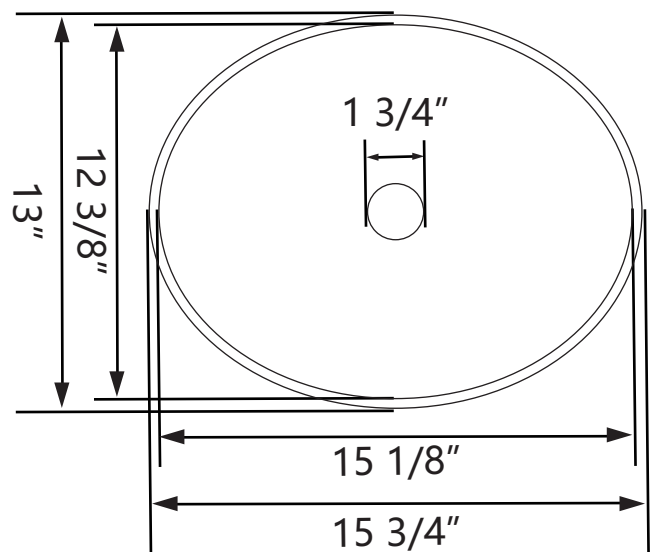
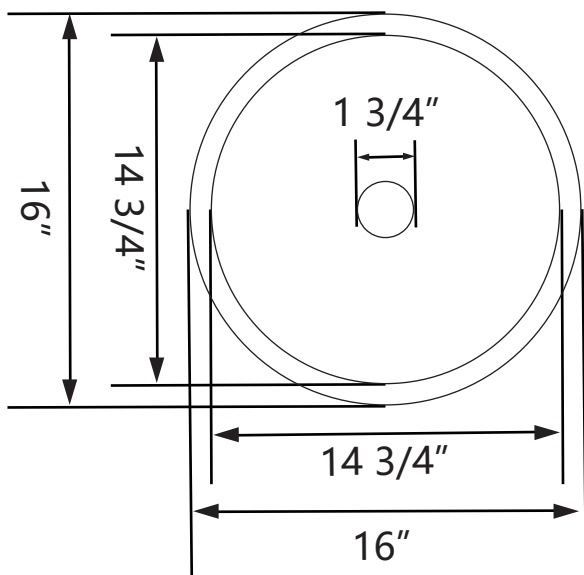
DV-1V081RS

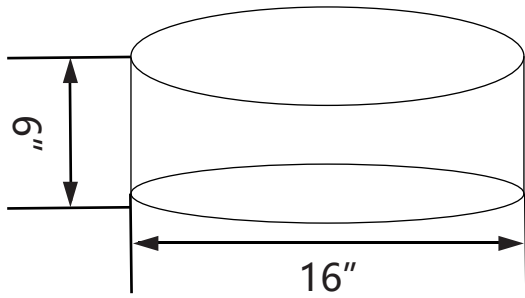
14-1/2" * 7-1/4" * 3-1/2"



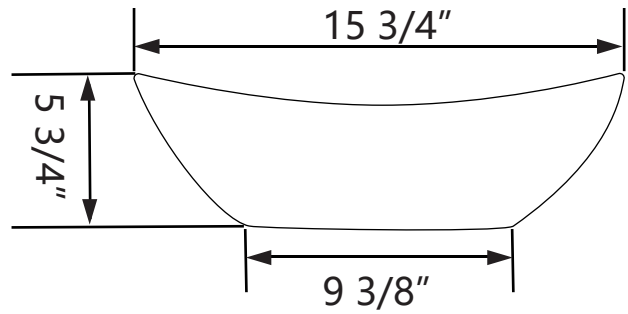
DV-2V031

19" * 14-3/4" * 6"

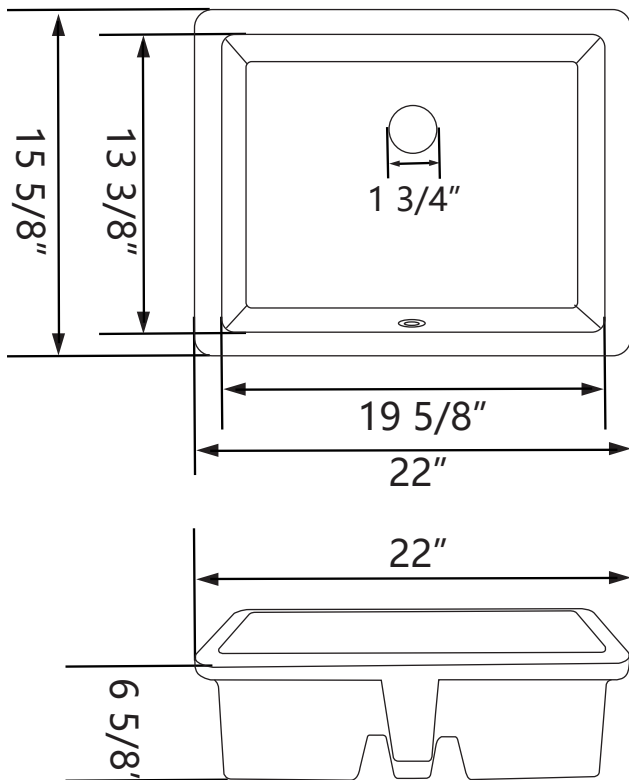




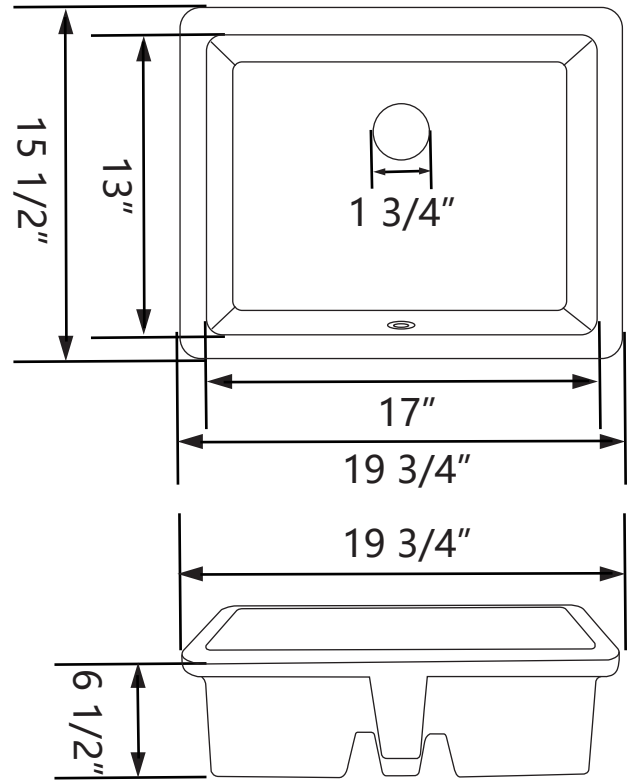
DV-1V063
16" * 16" * 6"



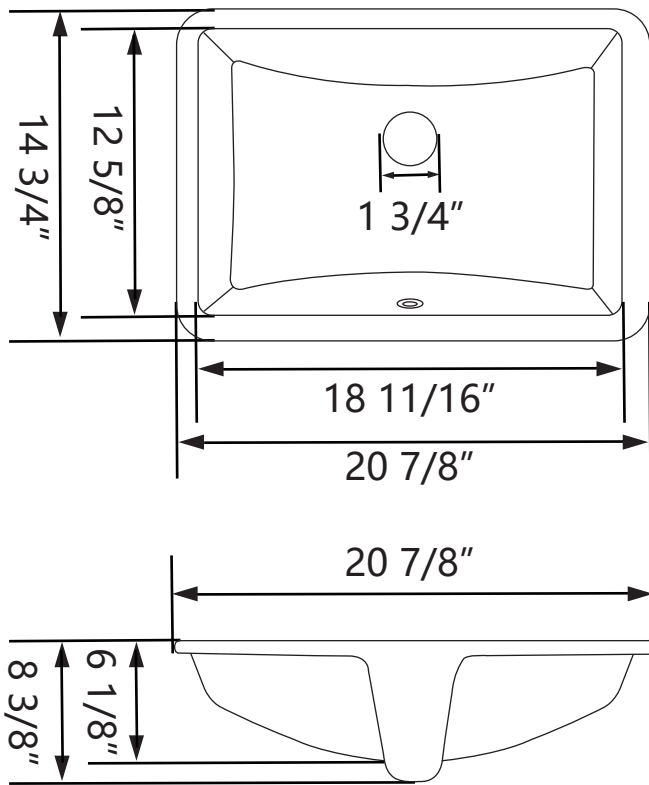
DV-1V051
15-3/4" * 13" * 5-3/4"



DV-1U202
22" * 15-5/8" * 6-5/8"

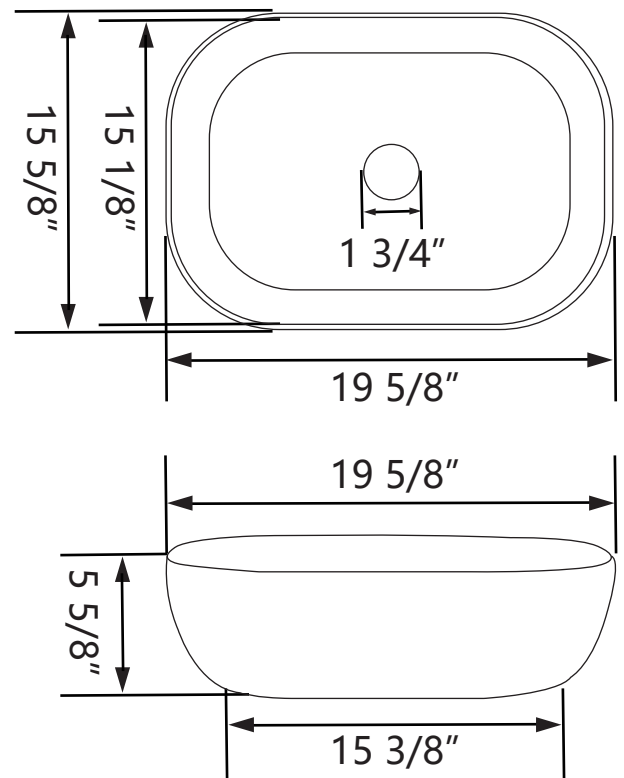


DV-1U201
19-3/4" * 15-1/2" * 6-1/2"



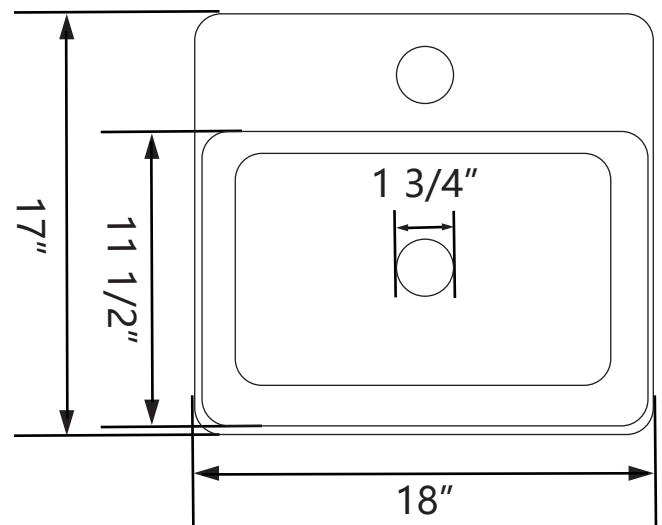
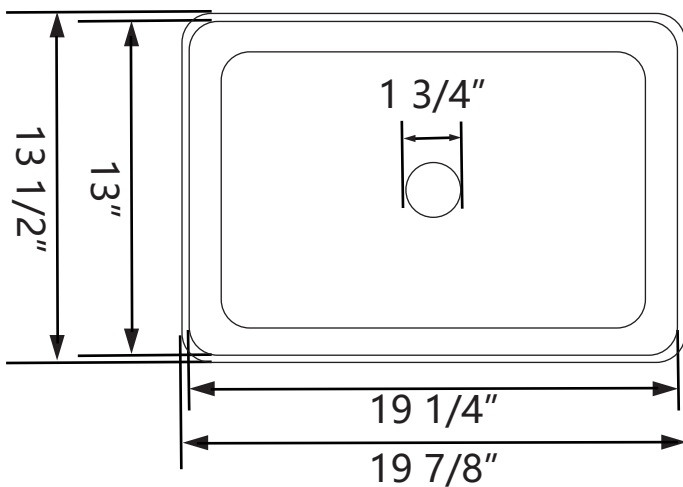
DV-1U101

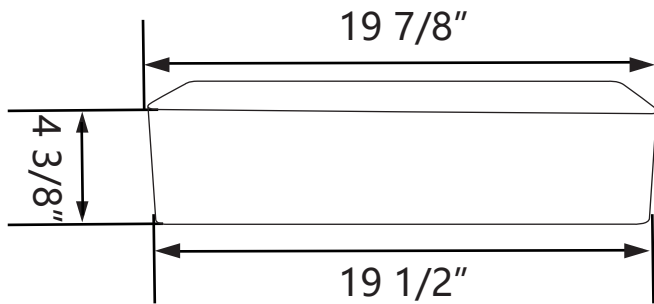
20-7/8" * 14-3/4" * 8-3/8"



DV-1V432

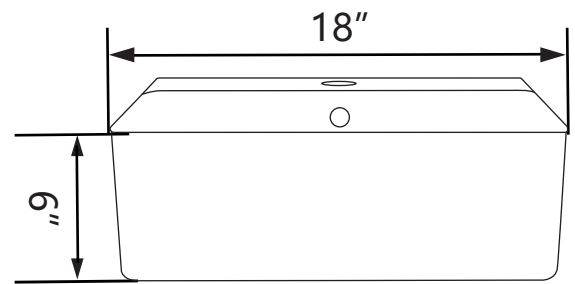
19-5/8" * 15-5/8" * 5-5/8"





DV-1V032

19-7/8" * 13-1/2" * 4-3/8"

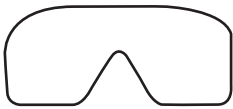


DV-1V231

18" * 17" * 6"

2. INSTRUCTIONS

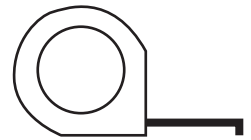
(1) SUGGESTED TOOLS AND MATERIALS



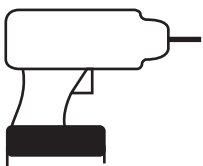
Safety Glasses



Pencil



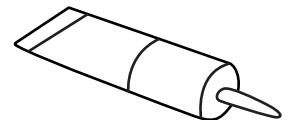
Tape Measure



Drill



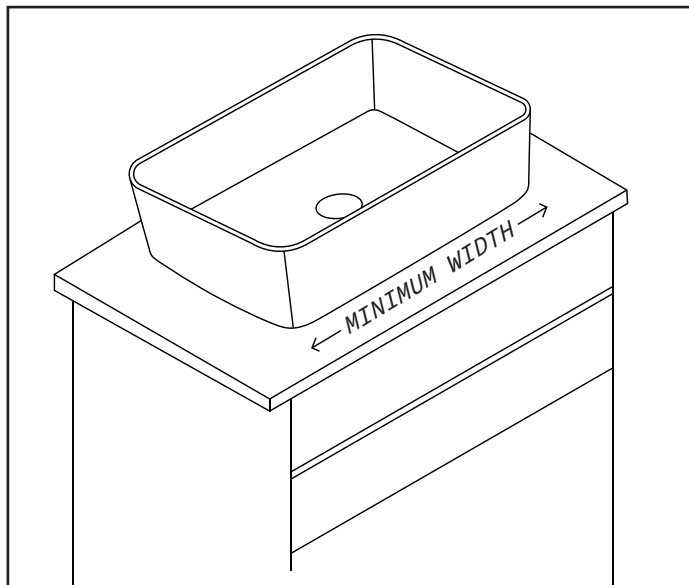
Level



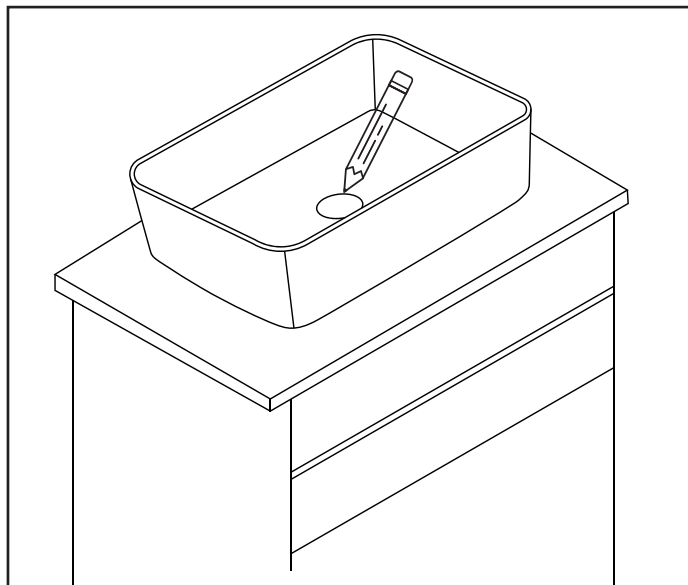
Thread Sealant

- Sealant - We recommend the use of a stone, marble and granite silicone caulk or a general purpose silicone sealant.

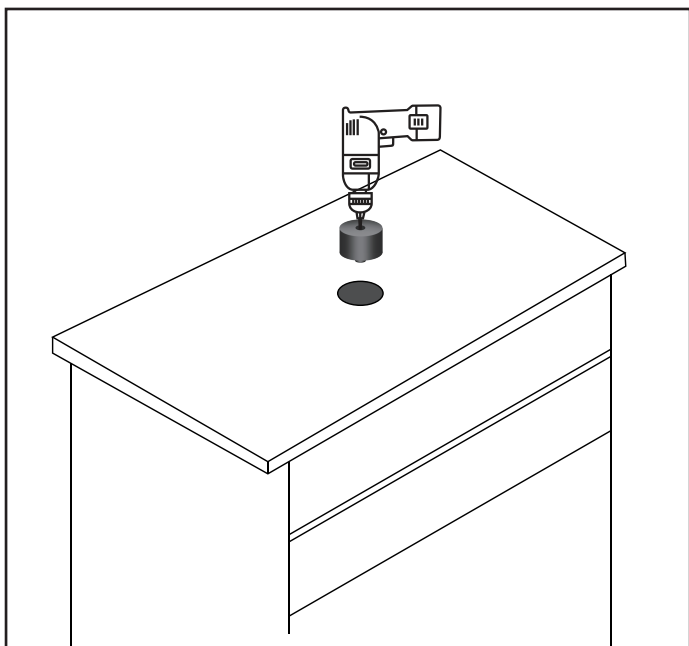
(2) INSTALLATION STEPS



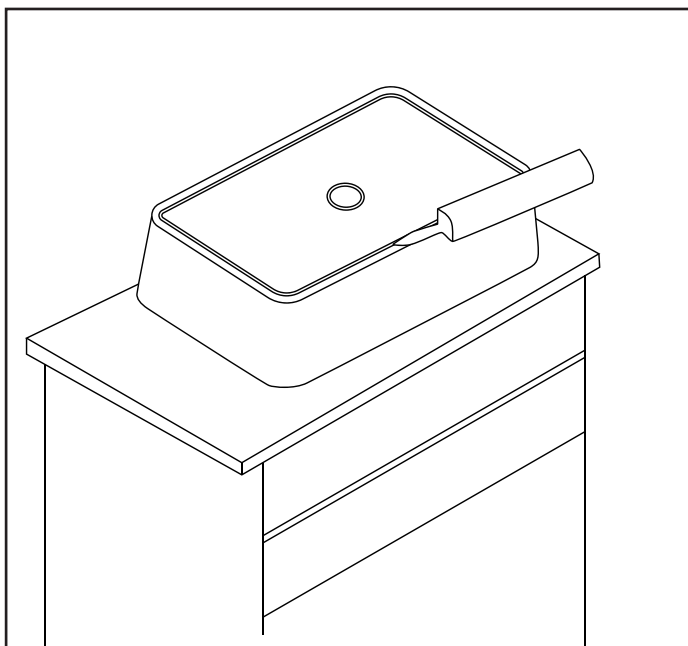
Step1:
Place the vessel sink on the installation countertop and confirm the size of the vessel sink is appropriate to ensure that there is enough space left behind to install the faucet.



Step2:
Mark the drain hole location on the countertop with a pencil.



Step3:
Cut countertop for drain opening. The recommended size of the countertop drain opening is 1 3/4 inches to 2 inches.



Step4:
Put the vessel sink up side down and apply silicone to the bottom edge.