

## VCS1216

### UNDERCOUNTER SINK

Rectangular undercounter mount sink  
Made from vitreous china  
Front overflow

#### ☐ Unglazed Rim

457x365mm  
(18 x 14 3/8")

#### ☐ Glazed underside

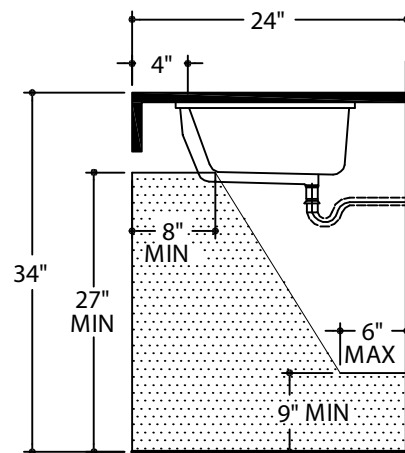
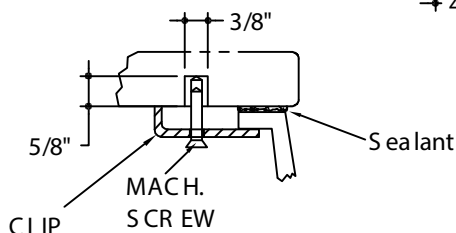
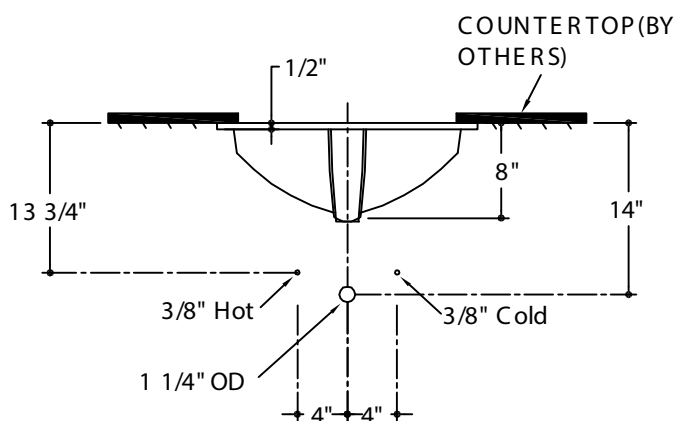
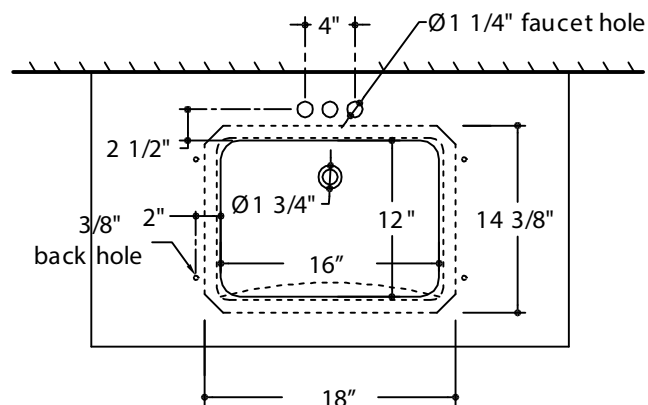
#### Bowl size:

406mm (16") wide  
305mm (12") front to back  
203mm (8") deep

#### Compliance Certifications - Meets or Exceeds the Following Specifications:

ASME A112.19.2  
CSA B45 series

### STANDARD INSTALLATION



### RECOMMENDED ADA INSTALLATION

#### NOTES:

WE RECOMMEND USING BASIN AS A TEMPLATE TO DETERMINE PROPER CONTOUR. CUT COUNTERTOP 38MM (1-1/2") INSIDE BASIN CONTOUR.  
\*DIMENSIONS SHOWN FOR LOCATION OF SUPPLIED AND "P" TRAP ARE SUGGESTED.

▼ UNDERCOUNTER MOUNTING KIT OPTIONAL  
FITTINGS NOT INCLUDED WITH FIXTURE AND MUST BE ORDERED SEPARATELY.  
SEALING COMPOUND SUPPLIED BY OTHERS.