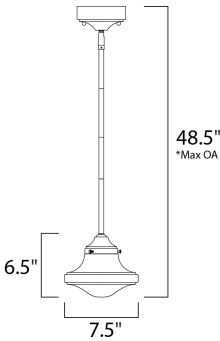




PRODUCT DESCRIPTION

This classic look was updated with modern day styling and technology. Tubular metal frames finished in Satin Nickel support school house glass shades in Satin White. Powered by dimmable LED modules this collection is the perfect marriage of ageless styling and space age technology.



*max overall height

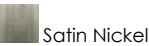
MEASUREMENTS

DIMENSION : 7.5" L x 7.5" W x 6.5" H
MAX OAH : 48.5" OAH
CANOPY : 4.96" W x 2.44" H x 4.96" L
HANGING WEIGHT : 2.87 lb

LAMPING

INPUT VOLTAGE : 120V
LUMENS : 690 Rated
BULB : 1 x 9W LED PCB Integrated , 9W Total
BULB INCLUDED : (Integrated)
DIMMABLE : Triac CL
CRI : 90+ CRI
COLOR_TEMP : 3000K

FINISHES OPTION



GLASS

Satin White SW

MATERIAL

Steel, Opal Glass

RATINGS

cETLus
Dry Location



ADDITIONAL

OPERATING TEMPERATURE:
-20°C (-4°F), 40°C (104°F)

PHOTOMETRIC: Report Found Online

Always consult a qualified electrician before installing any lighting product.



WESTERN DISTRIBUTION CENTER (HEADQUARTER)
253 NORTH VINELAND AVE | CITY OF INDUSTRY, CA 91746
EASTERN DISTRIBUTION CENTER
4200 SHIRLEY DR. | ATLANTA, GA 30336
P. 626.956.4200 | F. 626.956.4225 | maximlighting.com