

OXFORD GARDEN®

NETTE Club Chair

NTRCCPSE (shown with Seafoam Olefin Fabric)

FEATURES

- Cushions feature quick-dry construction with waterproof bag encasing the foam and vented bottoms for drainage.
- Dual-layer straps provide the look and feel of fabric without stretching, ensuring longevity and providing maximum support and comfort
- Leg end caps provide protection against marring and scratching of surfaces
- Easy assembly
- Low-maintenance and ideal for outdoor applications

MATERIALS

Powder-coated aluminum is durable and lightweight. Its rustproof nature ensures furniture will remain beautiful over its lifetime. Composite sling is a mesh fabric woven using PVC coated polyester. Dual-layer structural straps are composed of a soft outer polyolefin weave and supported by an internal polyethylene woven and bonded strap. Solution-dyed olefin is a quick-drying, fade resistant fabric. Soft and lightweight, it is an ideal fabric for outdoor projects.

Seat Height	Assemb. Width	Assemb. Depth	Assemb. Height	Assemb. Weight Lbs.
17.25"	35.5"	35"	30"	29
Carton # of Boxes	Carton Width	Carton Depth	Carton Height	Carton Weight Lbs.
1	37"	37"	22"	40

CONSTRUCTION

Welded aluminum

HARDWARE

Stainless steel

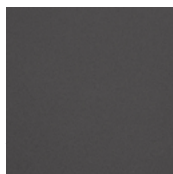
SHIPPING

Ships via small parcel
Knocked down

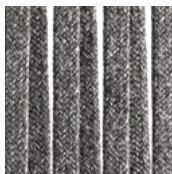
ASSEMBLY

Some assembly required

FRAME



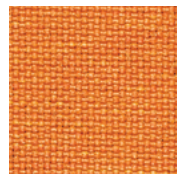
CARBON POWDER COATED ALUMINUM C



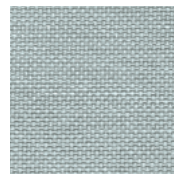
PEWTER DUAL-LAYER STRAP P



QUICK SHIP FABRICS



TANGERINE SOLUTION-DYED OLEFIN TG



SEAFOAM SOLUTION-DYED OLEFIN SF



SALT SOLUTION-DYED OLEFIN SA

QUICK SHIP LUMBAR PILLOW FABRIC

Cushions included. Lumbar pillow (1LP-02SA) is optional and sold separately. Both available for Quick Ship in the options above. Cushions and lumbar pillow also available in custom fabric or Customer's Own Material. Pricing, minimum order quantities, and lead times will vary; please call for more information.

For Quick Ship or Extended Lead Time SKU status, please call 877-866-3331 or email sales@oxfordgarden.com.