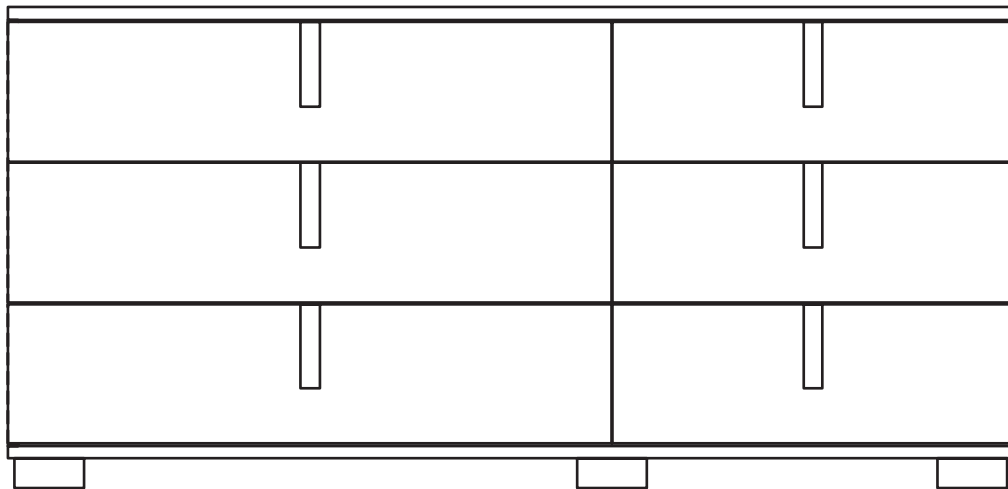




NOBLE DOUBLE DRESSER

ASSEMBLY INSTRUCTIONS



IMPORTANT
ASSEMBLING THIS
UNIT NEEDS
MINIMUM 2 PEOPLE






NO
DON'T USE THE DRILL

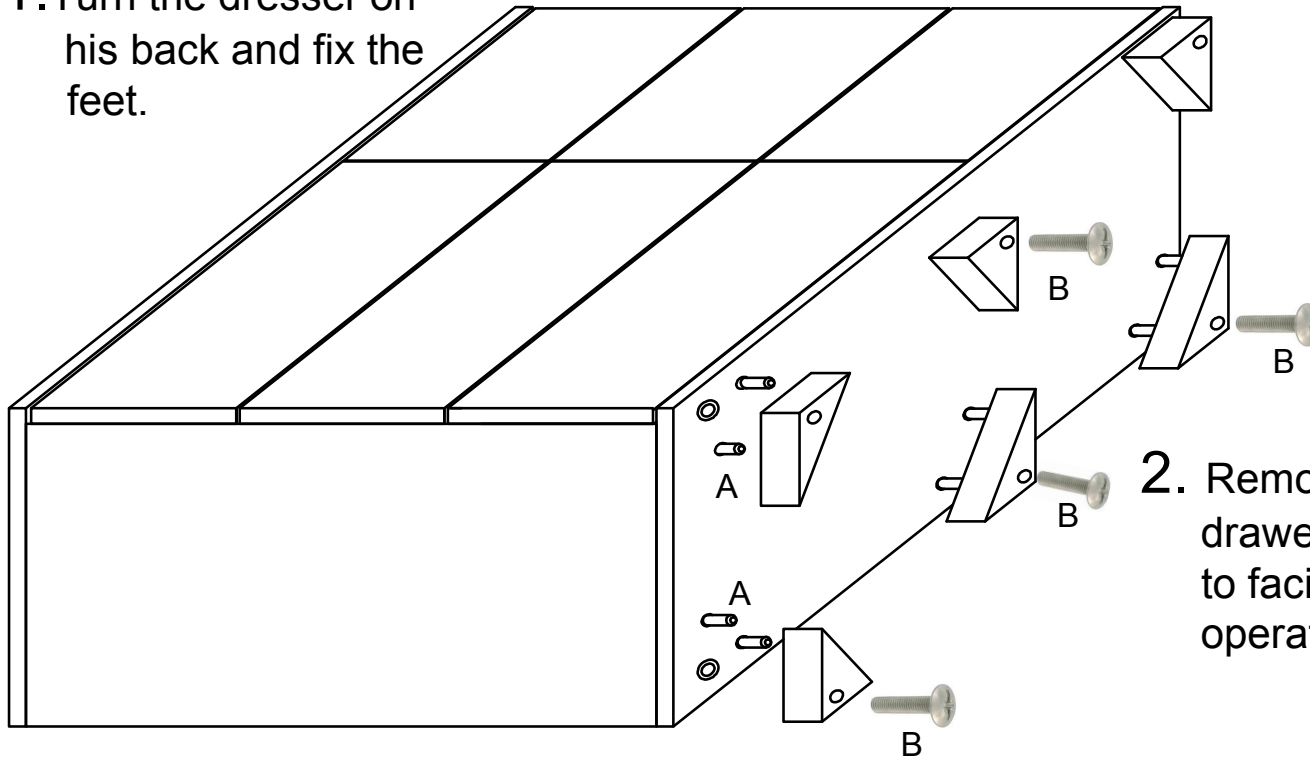


STAR INTERNATIONAL™
FURNITURE, INC.
ESSENTIALS FOR LIVING®

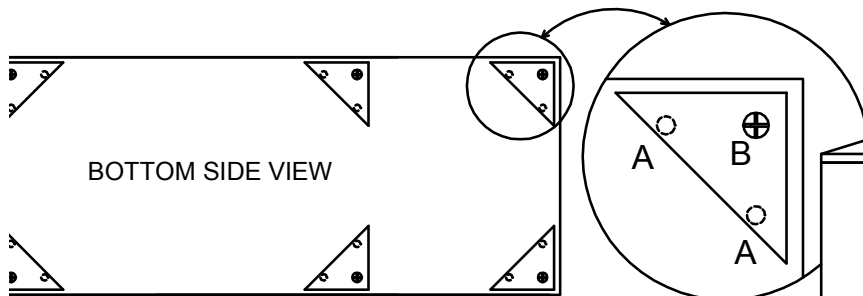
PARTS CHECKLIST

A		Wooden dowels (12pcs)
B		Screw for feet (6pcs)
C		Screw for handles TBL 4MA (12pcs)

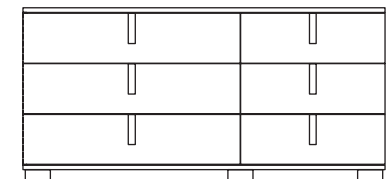
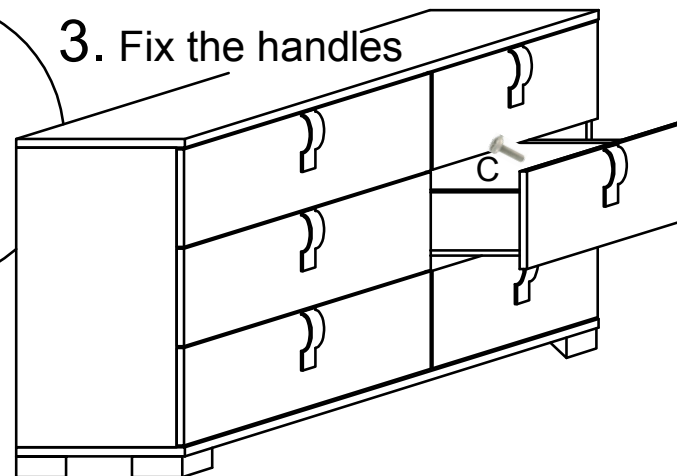
1. Turn the dresser on
his back and fix the
feet.



2. Remove the
drawers in order
to facilitate the
operation



3. Fix the handles



STAR INTERNATIONAL FURNITURE, INC.
19511 PAULING, FOOTHILL RANCH, CA 92610 USA
WWW.STARINTERNATIONALFURNITURE.COM
TEL: 949.858.2100 | FAX: 949.858.2044



HY **STAR INTERNATIONAL** TM
FURNITURE, INC.
ESSENTIALS FOR LIVING [®]

STAR INTERNATIONAL FURNITURE, INC.

19511 PAULING, FOOTHILL RANCH, CA 92610 USA

WWW.STARINTERNATIONALFURNITURE.COM

TEL: 949.858.2100 | FAX: 949.858.2044