



BOUNTYBRASSWARE
Designer Bathroom Fittings



The Pop Down® Sink Drain

WWW.BOUNTYBRASSWARE.US

BBUX: Standard Installation

71310-##

Note: This waste fits sinks WITH or WITHOUT over-flow. This drain fits BOTH types of sinks.

- 1 Bounty Brassware Americas recommends installation by a Licensed Plumber
- 2 Check that sink drain opening is 1-5/8" minimum diameter and that the flange sits neatly in sink drain recess
- 3 Apply non-staining sealant to underside of **FLANGE (B)** sufficient to contact and seal well
Neutral cure silicone sealant is also okay. **WARNING:** Oil-based Plumbers Putty may react with some finishes
- 4 Place **FLANGE (B)** with sealant into sink opening and check that flange/sink seal is good
- 5 **THICK SINKS:** Use only one **RUBBER WASHER (C)**

THIN SINKS: Use 2 **RUBBER WASHERS (C)** on either side of **SPACER (D)**, as shown. Be sure washers are seated correctly

- 6 Carefully screw **BODY (E)** on to **FLANGE (B)** from underside of sink. Make sure **RUBBER WASHER (C)** is correctly seated in the recess on top of lower body. Do not over-tighten. Use rubber-safe lubricant if needed.
Installation Trick: If the bottom of the sink is a very coarse/rough casting, apply a small bead of silicone to the top of the **RUBBER WASHER (C) to seal sink manufacturer's voids and thus create an effective seal.

- 7 Attach **TAIL PIECE (H)** to **BODY (E)** with **NUT (G)** and **TAIL PIECE WASHER (F)** in order shown

- 8 **TAIL PIECE (H)** may need to be trimmed to suit balance of waste system. P-trap and drain accessories not included

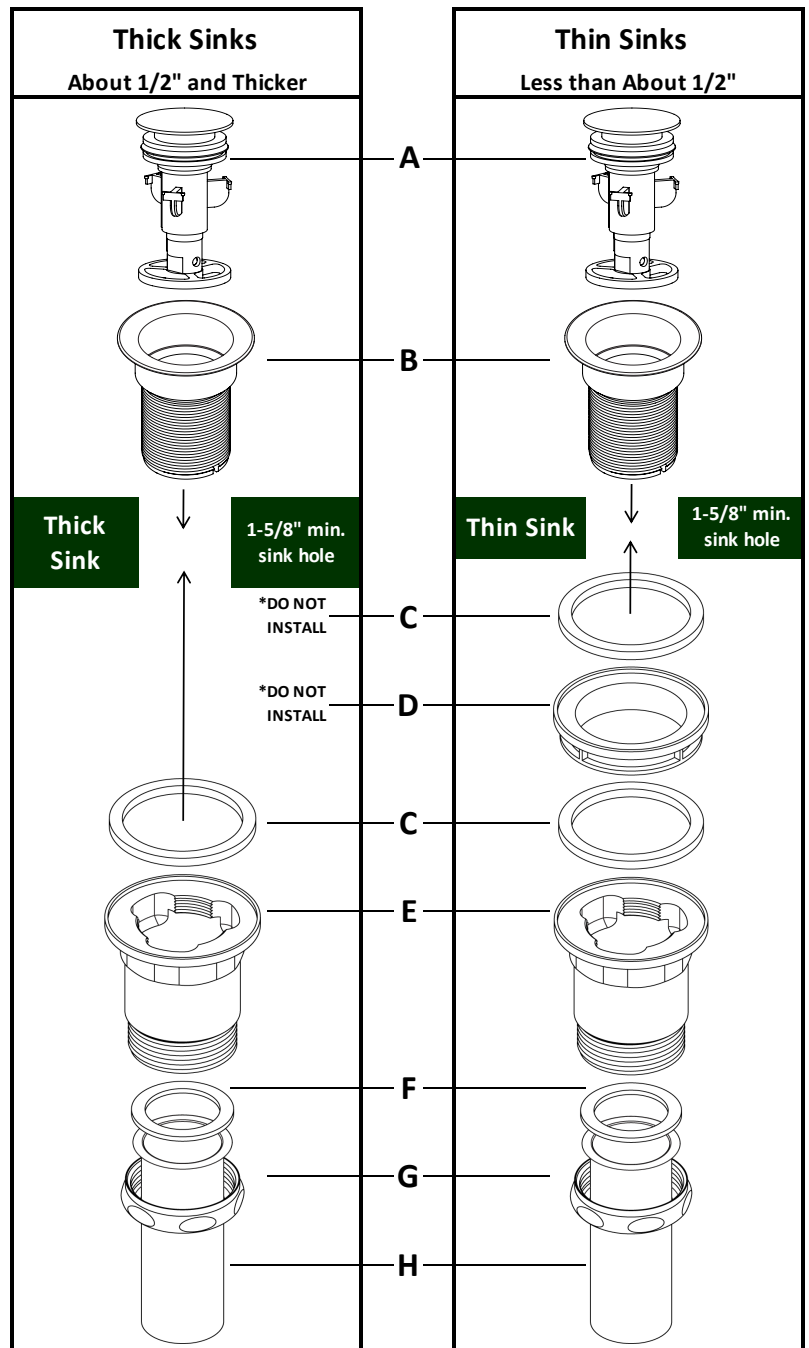
- 9 Install **Cartridge (A)**. Drain is open when flush and closed when down



OPEN



CLOSED



Drawings not to scale

U.S. Patent 9151027

REVISED: 1-Mar-21

BOUNTY BRASSWARE AMERICAS, LLC, THE AMERICA'S DISTRIBUTOR, IS A SOLE AND SEPARATE ENTITY AND IS NEITHER RELATED TO NOR OWNED BY BOUNTY BRASSWARE OF AUSTRALIA

©2016 BOUNTY BRASSWARE AMERICAS, LLC



BOUNTYBRASSWARE
Designer Bathroom Fittings



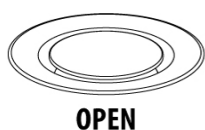
The Pop Down® Sink Drain

WWW.BOUNTYBRASSWARE.US

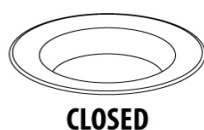
BBUX: Installation with accessory Extension 29356 for extra-thick sinks (only)

Stack our Extensions to suit virtually any sink thickness (sold separately)

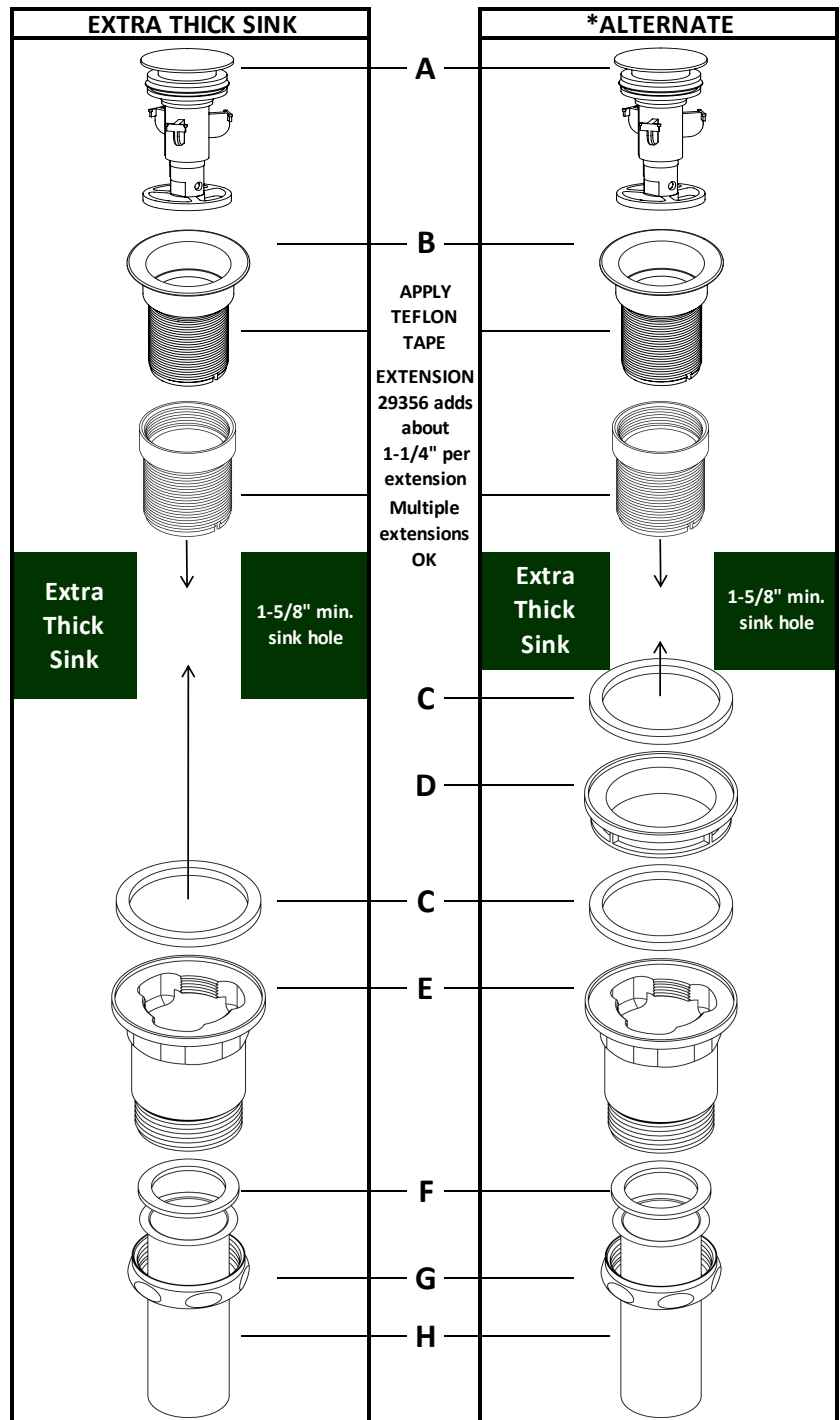
- 1 Bounty Brassware Americas recommends installation by a Licensed Plumber
- 2 Check that sink drain opening is 1-5/8" minimum diameter and that the flange sits neatly in sink drain recess
- 3 Apply non-staining sealant to underside of **FLANGE (B)** sufficient to contact and seal well
Neutral cure silicone sealant is also okay. **WARNING:** Oil-based Plumbers Putty may react with some finishes
- 4 Place **FLANGE (B)** with sealant into sink opening and check that flange/sink seal is good
- 5 Use **EXTENSION(s) 29356** to achieve virtually any sink depth. Apply Teflon thread tape to bottom of **FLANGE (B)** and screw in to top of **EXTENSION**. Your custom installation may require the use of **RUBBER WASHER (C)** and **SPACER (D)**
See ***ALTERNATE** exploded view; far right column
- 6 Carefully screw **BODY (E)** on to **FLANGE (B)** from underside of sink. Make sure **RUBBER WASHER (C)** is correctly seated in the recess on top of lower body. Do not over-tighten
Installation Trick: If the bottom of the sink is uneven or is a very coarse/rough casting, apply a small bead of silicone to the top of the **RUBBER WASHER (C) to seal sink manufacturer's voids and thus create an effective seal
- 7 Attach **TAIL PIECE (H)** to **BODY (E)** with **NUT (G)** and **TAIL PIECE WASHER (F)** in order shown
- 8 **TAIL PIECE (H)** may need to be trimmed to suit balance of waste system. P-trap and drain accessories not included
- 9 Install Cartridge (**A**). Drain is open when flush and closed when down



OPEN



CLOSED



Drawings not to scale

U.S. Patent 9151027

REVISED: 1-Mar-21

BOUNTY BRASSWARE AMERICAS, LLC, THE AMERICA'S DISTRIBUTOR, IS A SOLE AND SEPARATE ENTITY AND IS NEITHER RELATED TO NOR OWNED BY BOUNTY BRASSWARE OF AUSTRALIA

©2016

BOUNTY BRASSWARE AMERICAS, LLC



BOUNTYBRASSWARE
Designer Bathroom Fittings



The Pop Down® Sink Drain

WWW.BOUNTYBRASSWARE.US

BBUX: Assembly & Dimensions

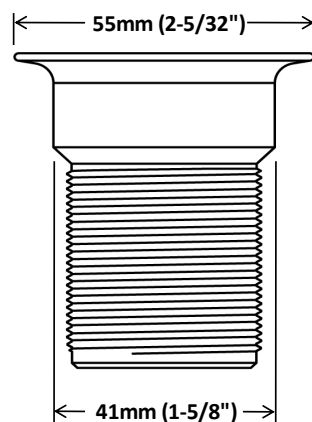
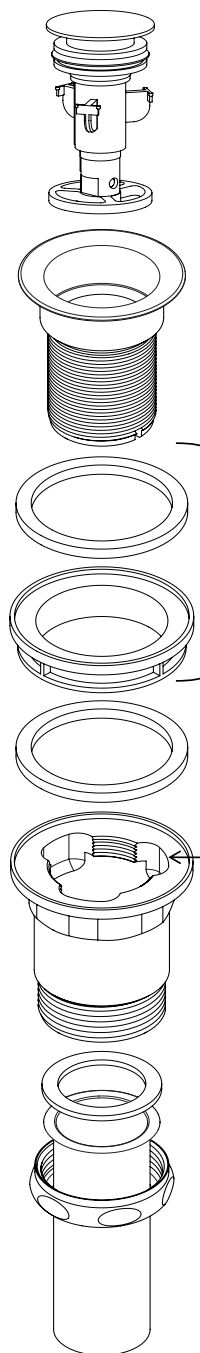
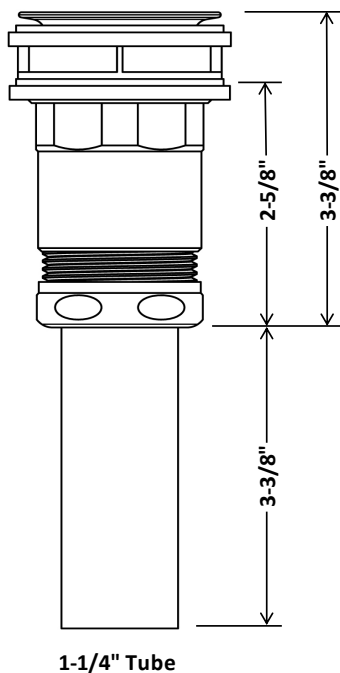
71310-##

Nominal dimensions, shown to nearest 1/16"

Drawings not to scale

PLEASE NOTE:

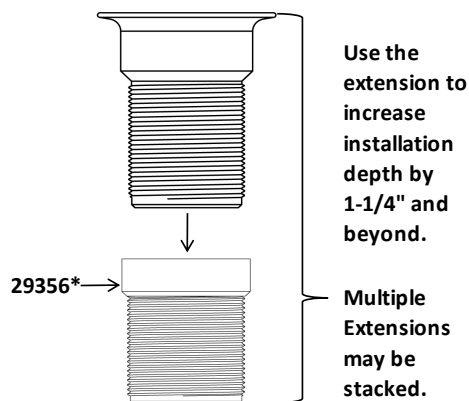
The Pop Down® installs on
sinks WITH or WITHOUT overflow
One drain will suit EITHER application
See overflow ports in exploded view for clarification*



Only install these two for thin-sink applications
(e.g. metal sinks or sink thickness $\leq 1/2"$ ±)

***Over-flow Ports (3)**

Our Pop Down® Drain fits sinks
WITH or WITHOUT over-flow capability



*Extension 29356 Sold Separately

U.S. Patent 9151027

REVISED: 26-Mar-21

BOUNTY BRASSWARE AMERICAS, LLC, THE AMERICA'S DISTRIBUTOR, IS A SOLE AND SEPARATE ENTITY AND IS
NEITHER RELATED TO NOR OWNED BY BOUNTY BRASSWARE OF AUSTRALIA

©2016 BOUNTY BRASSWARE AMERICAS, LLC