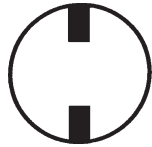
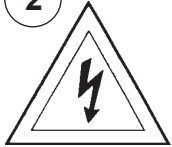


Instructions for electrician STEPS 2 - 21

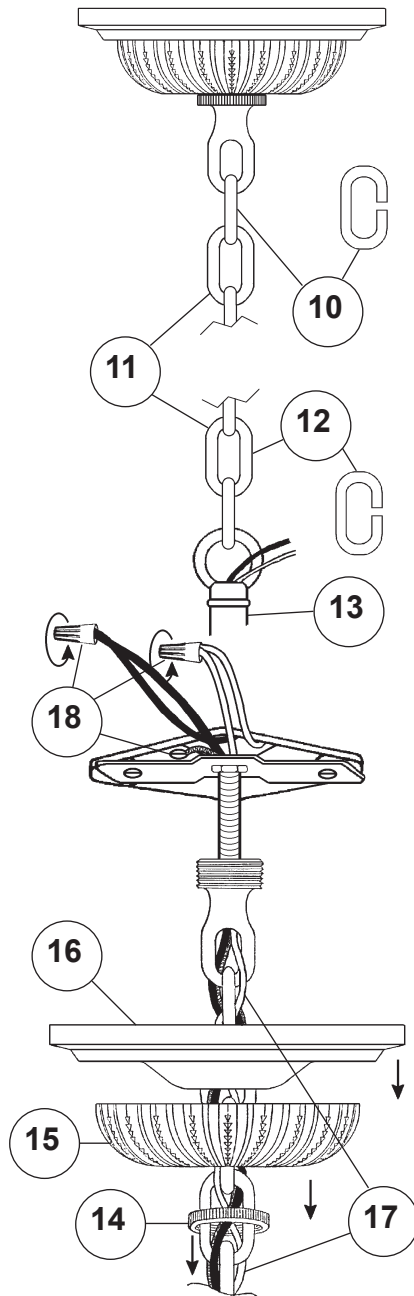
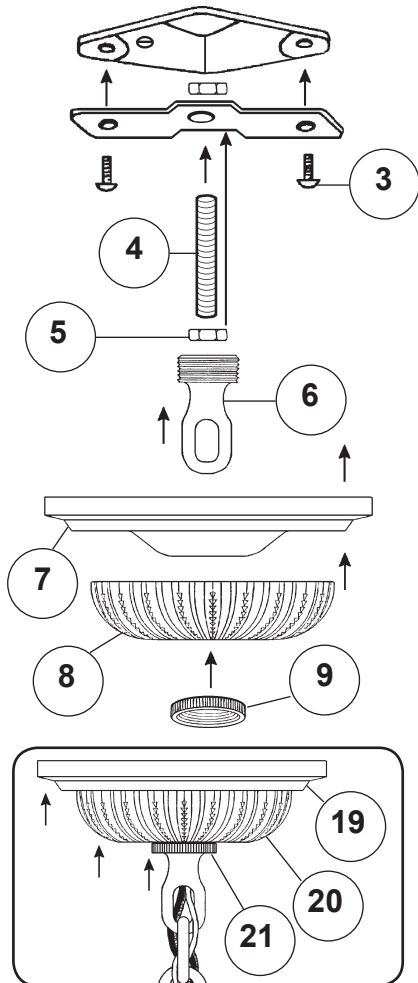
2

WARNING:



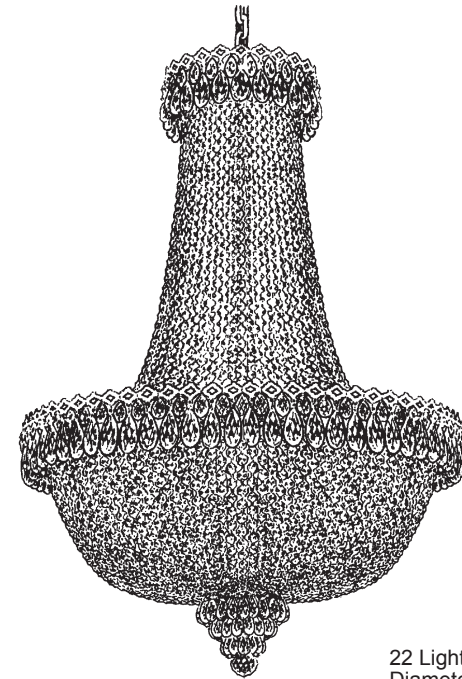
Electrical Danger Turn Power Off

All electrical components must be installed by a licensed electrician in accordance with the National Electric Code and the appropriate local electrical codes.



CHANDELIER 2626-____ TRIM DIAGRAM

(Finish Option)



THIS DESIGN IS THE PROPRIETARY
TRADE DRESS/TRADEMARK OF
SWAROVSKI LIGHTING, LTD.

22 Lights
Diameter: 24"
Body Length: 36"
Hanging Weight: 28 lbs.

SCHONBEK®

See diagram on back page
Follow steps in exact order
Save this trim diagram for future reference

1

IMPORTANT

Person who opens carton should record the
following information for future service.

CODE # _____ Four-digit number on outside of carton.
PACKER # _____ See crystal package label.
ORDER # _____ See crystal package label.

Instructions for crystal trimming STEPS 22 - 35



22

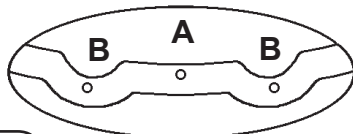
You will need 22 - B10
25 Watts Recommended
60 Watts Max

Install bulb and be sure
to test fixture **BEFORE**
trimming.

23

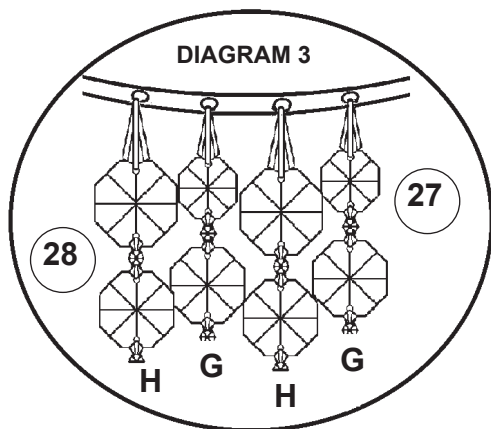
Attach the bottom
finial section by
attaching the jackchain into
the half ball located on the
bottom of the frame.

DIAGRAM 2



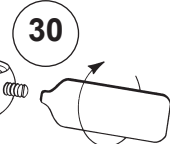
NOTE: Hang drop "C"
from scallop, **NOT**
through the loop on the
gallery.

DIAGRAM 3



Large jewel at top and graduates to a
smaller jewel toward bottom of chain.

2626-__



Tighten With
Tool Provided.

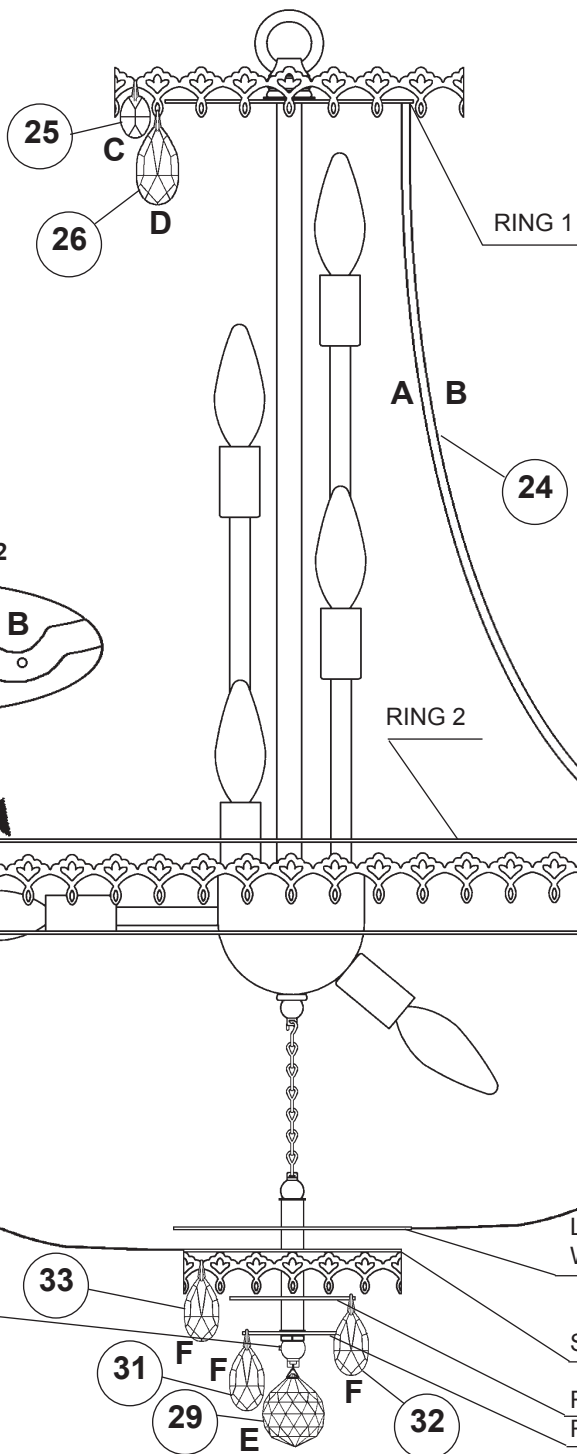
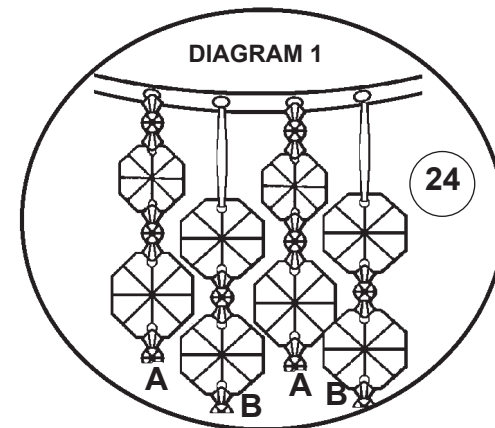


DIAGRAM 1



Small jewel at top and graduates to a
larger jewel toward bottom of chain.

NOTE: Raise the large
finial washer for easier
installation of Chains "H".

