

# JSG Oceana Vessel Sinks

**15" Vessels  
(005-004-xxx)**



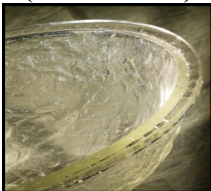
**16" Vessels  
(005-003-xxx)**



**17" Vessels  
(005-005-xxx)**



**Crystal  
(005-xxx-000)**



**Crystal Reflections  
(005-xxx-300)**



**Champagne Gold  
(005-xxx-100)**



**Sea Green  
(005-xxx-200)**



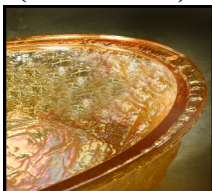
**Black Nickel  
(005-xxx-022)**



**Fawn  
(005-xxx-120)**



**Gold Reflections  
(005-xxx-101)**



**Green Reflections  
(005-xxx-201)**



**Slate  
Blue Reflections  
(005-xxx-344)**



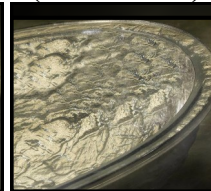
**Blue Reflections  
(005-xxx-140)**



**Cobalt Copper  
(005-xxx-010)**



**Platinum  
(005-xxx-500)**



**24K Gold  
(005-xxx-400)**



*\*Certain colorations are not available in all sink models-see Pricing Catalog\**

JSG Oceana Lustrous coloration samples are only representations of color - not rim style. No two sinks are exactly alike.



215 North 4<sup>th</sup> Street, Jeannette, PA 15644 ph:724.523.5567 fax:724.523.0123 [www.jsgoceana.com](http://www.jsgoceana.com)

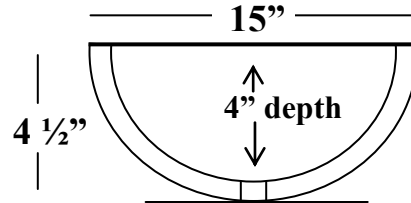
Made in the U.S.A.

# JSG Oceana Vessel Sinks

## Model      Vessel Specifications

### # 004      15" Vessel

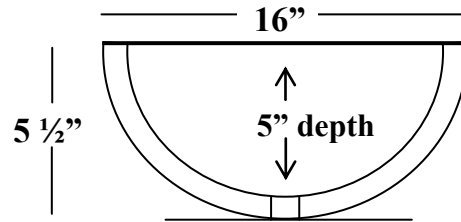
- Inner Rim: 14"
- Rim: Free formed
- Glass Thickness: approx. 1/2"
- Vessel Tolerance: + / - 1/2"
- Weight: 16 lbs.
- Drain Hole: 1 3/4"



---

### # 003      16" Vessel

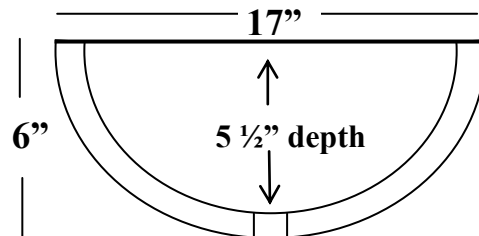
- Inner Rim: 15"
- Rim: Free formed
- Glass Thickness: approx. 1/2"
- Vessel Tolerance: + / - 1/2"
- Weight: 19 lbs.
- Drain Hole: 1 3/4"



---

### # 005      17" Vessel

- Inner Rim: 16"
- Rim: Defined
- Glass Thickness: approx. 1/2"
- Vessel Tolerance: + / - 1/2"
- Weight: 24 lbs.
- Drain Hole: 1 3/4"



All measurements and weights are approximate. JSG Oceana vessels are made using free-form hand process.



215 North 4<sup>th</sup> Street, Jeannette, PA 15644 ph:724.523.5567 fax:724.523.0123 [www.jsgoceana.com](http://www.jsgoceana.com)

Made in the U.S.A.