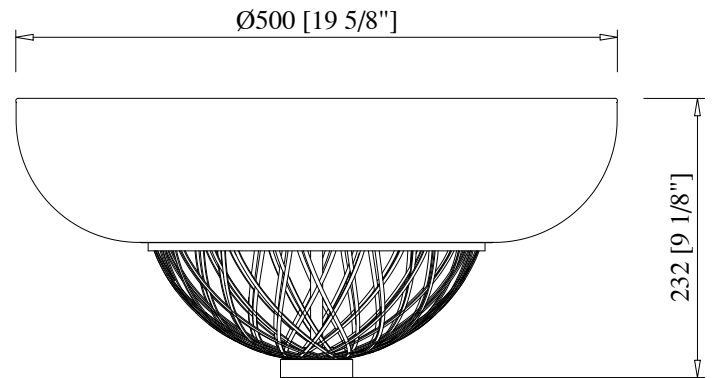
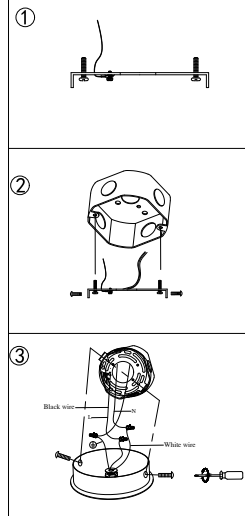
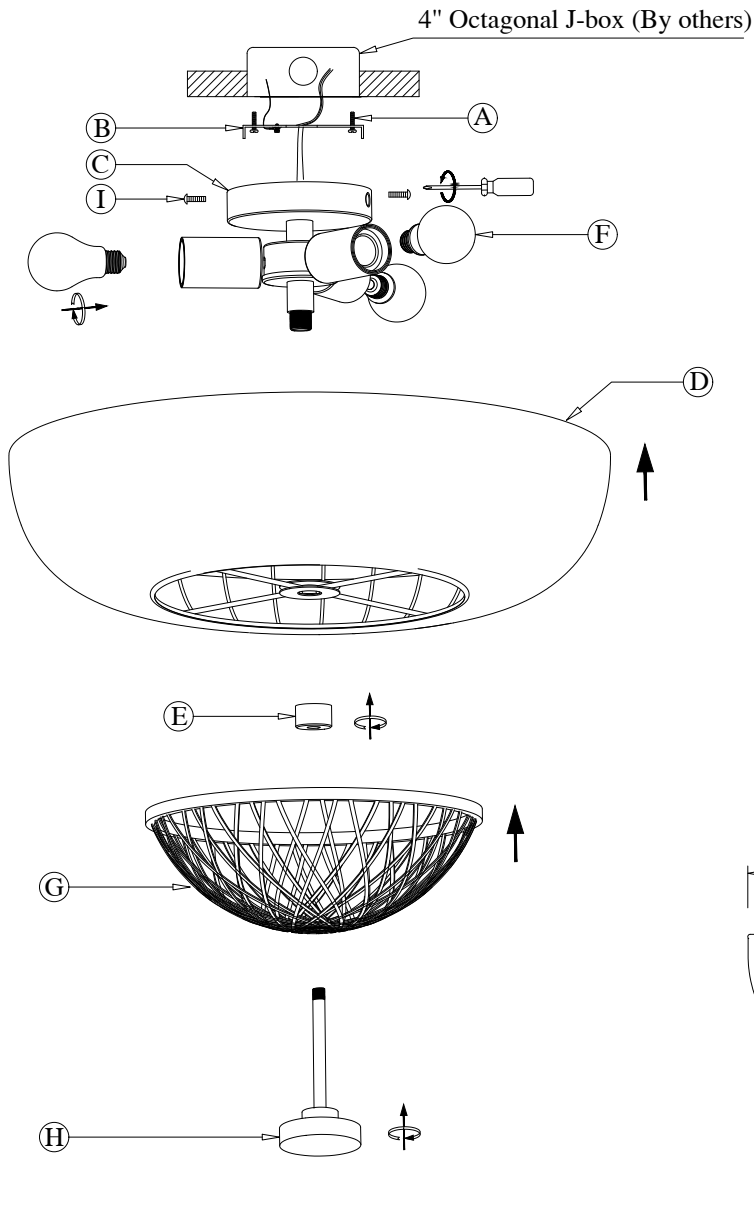


DIAGRAM OF INSTALLATION STRUCTURE

SKU No. :CE1009194

Product Size: Ø19.7"*H9.1"

Light Source: 3 × A19 E26 LED Bulb



- | | | | |
|-------------------------|---------------------------------|----------------------|---------------------------|
| (A) Mounting Screw (2×) | (B) Mounting Plate | (C) Canopy | (D) Fabric Lampshade |
| (E) Hand Nut | (F) E26 LED Bulb
(By others) | (G) Bamboo Lampshade | (H) Hand Stud |
| | | | (I) Round Head Screw (2×) |

Installation instruction

1. Turn off the power.
2. Dismantle the mounting plate subassembly as picture(1) from the lamp fixture body, then install the mounting plate(B) to J-Box with the mounting screws(A).
3. Connect the fixture to a suitable ground in accordance with local electrical codes.
4. Connect the White wire to the neutral power line wire with a wire nut.
5. Connect the Black wire to the hot power line wire with a wire nut.
6. Neatly place all wires and wire nut connections inside the J-box.
7. Install the canopy(C) to ceiling with the round head screws(I).
8. Screw 3×E26 LED bulbs(F) into the the lamp-holder of lamp fixture body.
9. Secure the fabric lampshade(D) onto the lamp fixture body by the hand nut(E).
10. Install the bamboo lampshade(G) onto the lamp fixture body, then tighten it with the hand stud(H).
11. After finish the installation, turn on the power.