






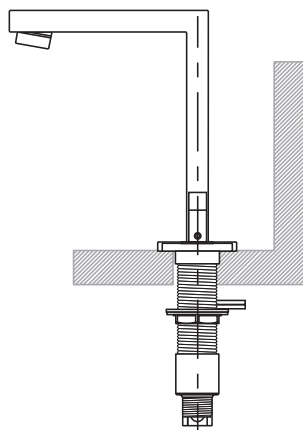
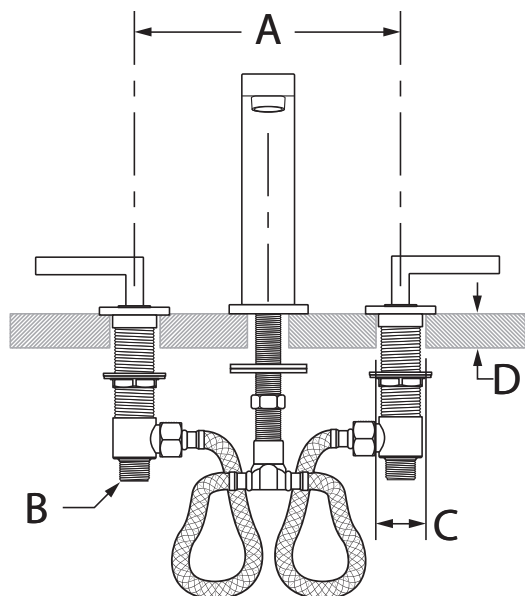
SLW3612PP, SLW3622PP
Two Handle Widespread Lavatory Faucet
Operation & Maintenance Manual



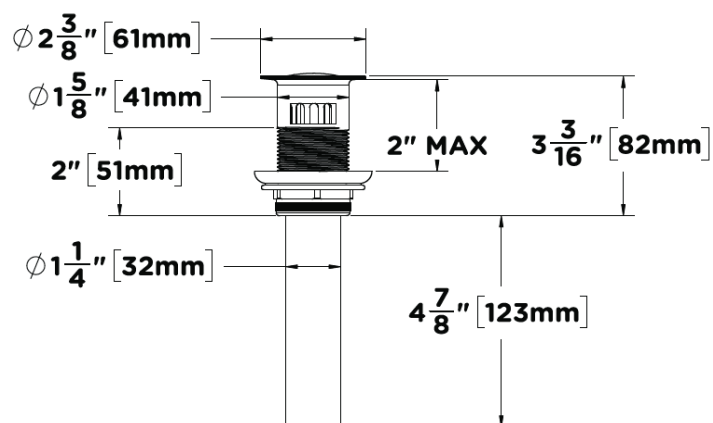
Model Numbers	Feature Highlights
<div><input type="checkbox"/> SLW3612PP Two Handle Widespread Lavatory Faucet with a Push Pop Drain Assembly</div> <div><input type="checkbox"/> SLW3622PP Two Handle Widespread Lavatory Faucet with a Push Pop Drain Assembly</div>	<ul style="list-style-type: none">• 8" to 16" mount configuration• Quarter turn ceramic cartridges• 6-5/8" height (SLW3612PP)• 4" height (SLW3622PP)• Push Pop Drain Assembly• Standard 1.0 gpm (3.8 L/min) flow rate• Faucet shall be metal construction, plated in standard polished chrome finish
Compliance	Warranty
<p>ASME A112.18.1/CSA B125.1</p> <p>NSF/ANSI/CAN 61: Q<1, NSF/ANSI 372</p> <p>WaterSense 1.0 gpm (3.8 L/min)</p> <div></div> <p>⚠ WARNING: This product can expose you to chemicals including lead, which is known to the state of California to cause cancer, birth defects, or other reproductive harm. For more information, go to www.P65Warnings.ca.gov.</p>	<p>Limited Lifetime - to the original end purchaser in consumer/residential installations.</p> <p>10 Years - for commercial/industrial installations. Refer to www.symmons.com/warranty for complete warranty information.</p> <div></div>

SLW3612PP, SLW3622PP

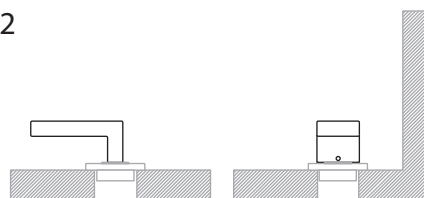
Dimensions



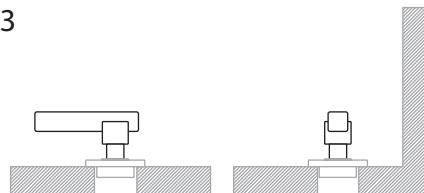
Measurements	
A	Min. 8", 203 mm Max. 16", 406 mm
B	1/2-14 NPSM
C	(3x) Hole size Min. Ø 1-1/4", 32 mm Max. Ø 1-3/8", 35 mm
D	Deck Thickness Ref. Min. 7/8", 22 mm Max. 2-3/8", 60 mm



-H2

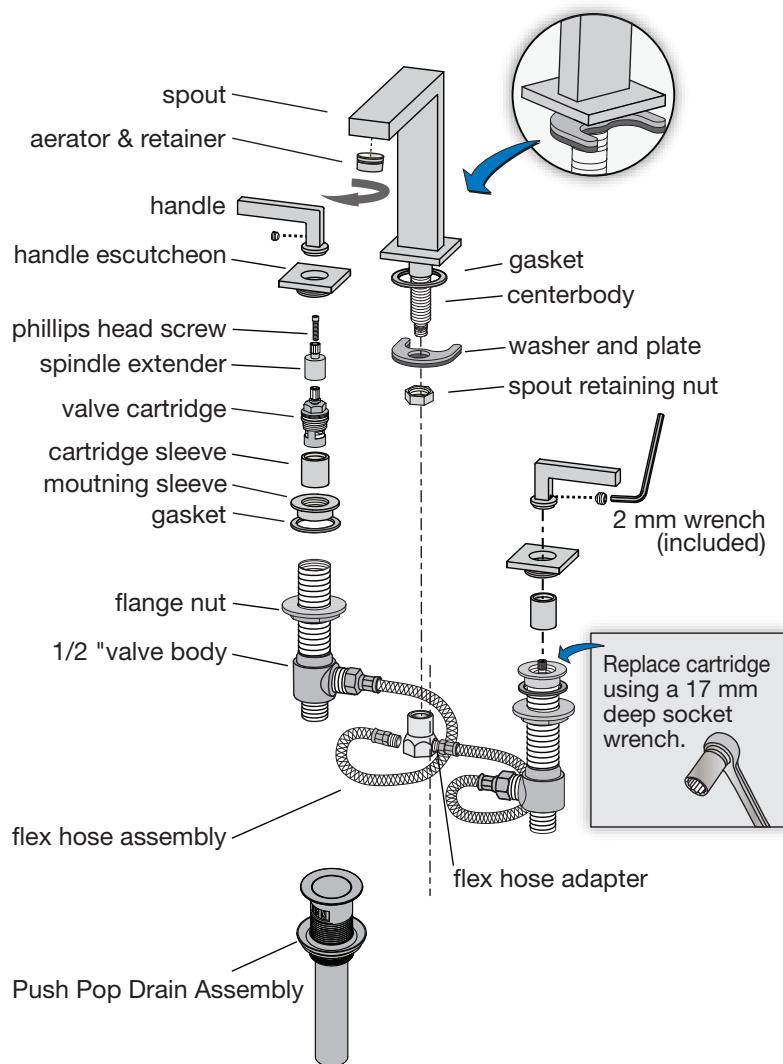


-H3



Note: Dimensions subject to change without notice.

Parts Breakdown



Replacement Parts

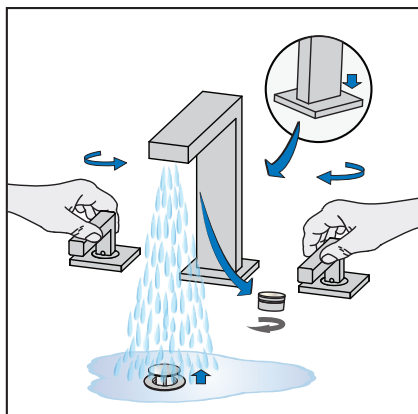
Part Number	Item
RL-149	Handle assembly handle (2) screw (2) escutcheon (2)
LN-15* FLR-110-1.5* FLR-110-1.0*	Aerator & retainer flow rates 2.2 gpm (8.3L /min) 1.5 gpm (5.7L /min) 1.0 gpm (3.8L /min) washer aerator retainer
KN-114 (hot) OFF = CW KN-113 (cold) OFF = CCW	Valve cartridge
RL-148	Mounting hardware kit retainer (2) gasket (2) flex hose (2)
RL324*	Push Pop Drain Assembly

* Note: When ordering replacement parts for faucets with an optional decorative finish, append appropriate three letter finish suffix code to part numbers marked with an asterisk (*).

Tools Required

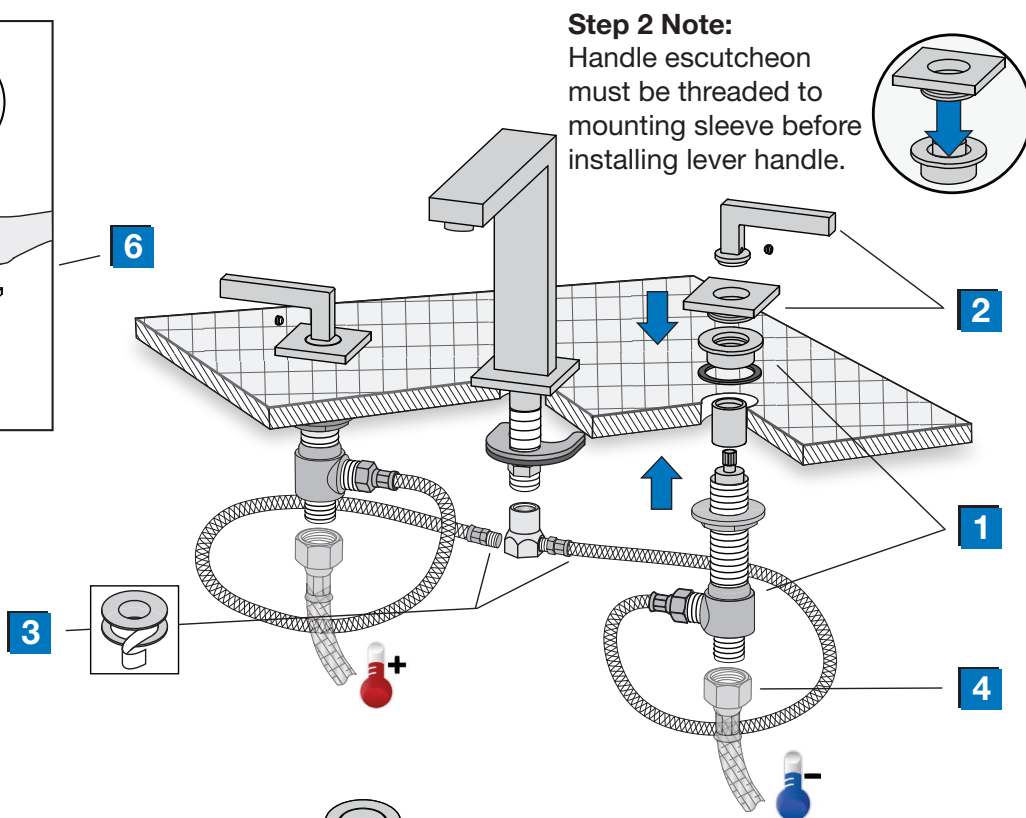
Adjustable Wrench	
Allen wrench (2 mm)	
Plumber Putty	
Phillips Head Screwdriver	
Soft Jaw Pliers	

Quick Install Guide



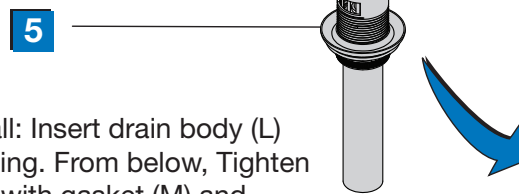
Installation Notes:

- 1) Apply plumber tape to threaded connections as shown in illustration.
- 2) DO NOT use plumber putty or plumber tape on fittings with face seal washers or o-ring seals.
- 3) DO NOT OVERTIGHTEN fittings with face seal washers or o-ring seals.



Step 2 Note:

Handle escutcheon must be threaded to mounting sleeve before installing lever handle.



Step 5 Note:

Push Pop Install: Insert drain body (L) into drain opening. From below, Tighten locking nut (O) with gasket (M) and washer (N) to flange. Tighten tail nut (Y) with washer (X) to secure tail pipe (Q). Do Not overtighten.

