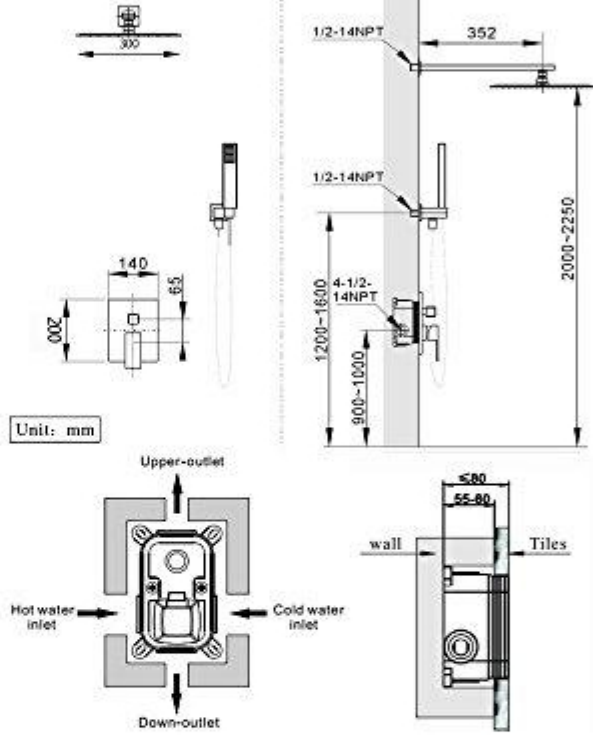


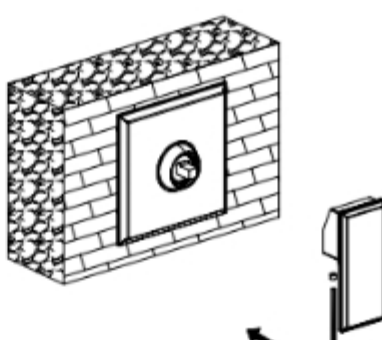
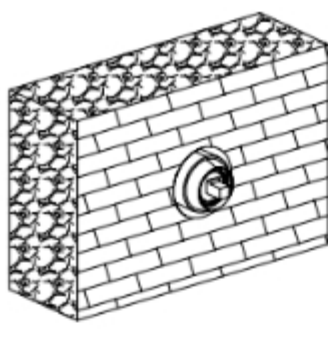
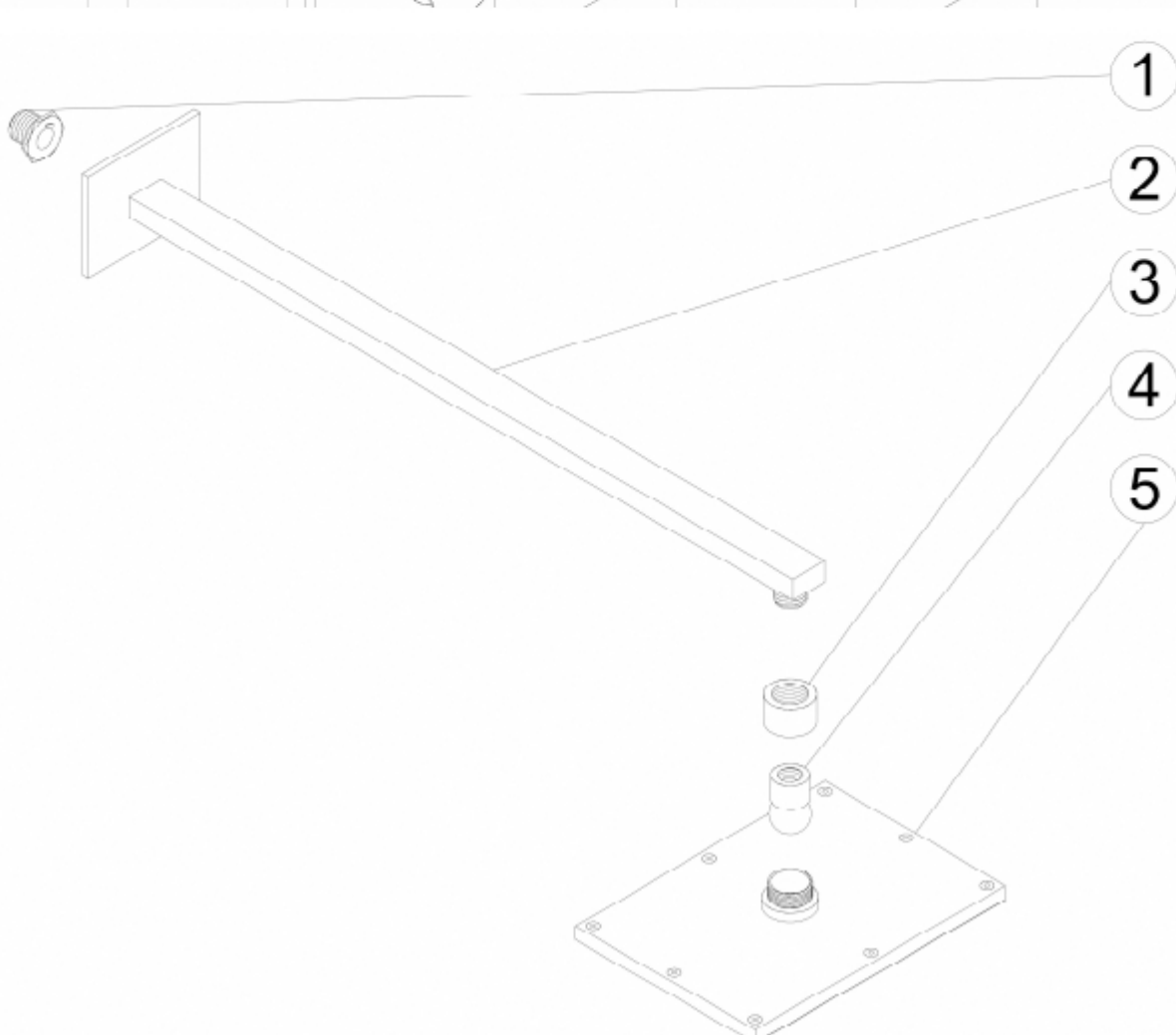
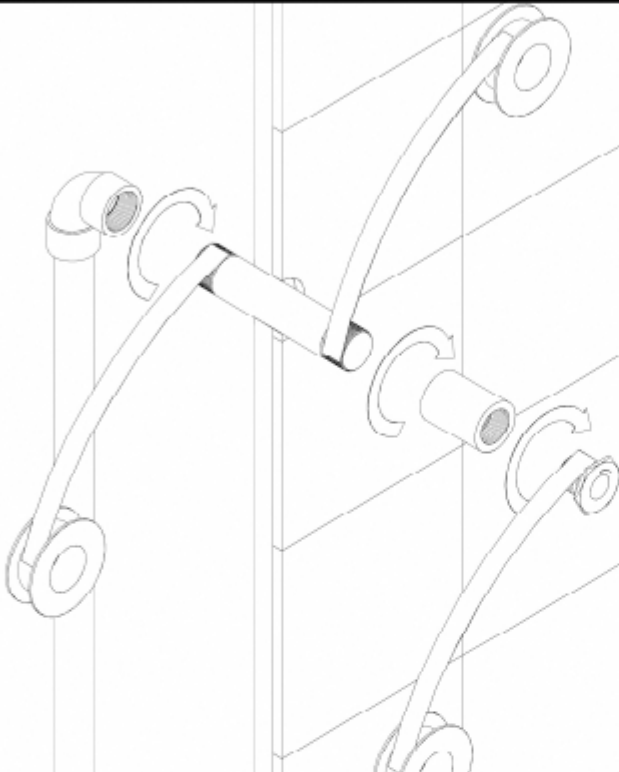
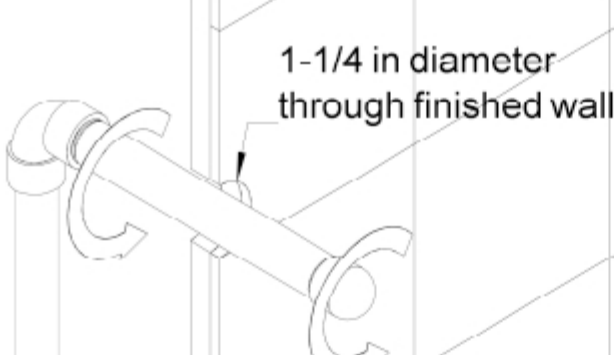
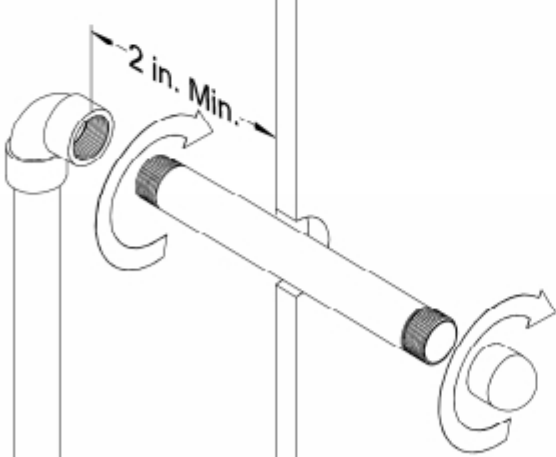
16" Big Rainfall Shower Faucet Wall Mounted Nickel Brushed Shower Single Handle



INSTALLATION INSTRUCTIONS

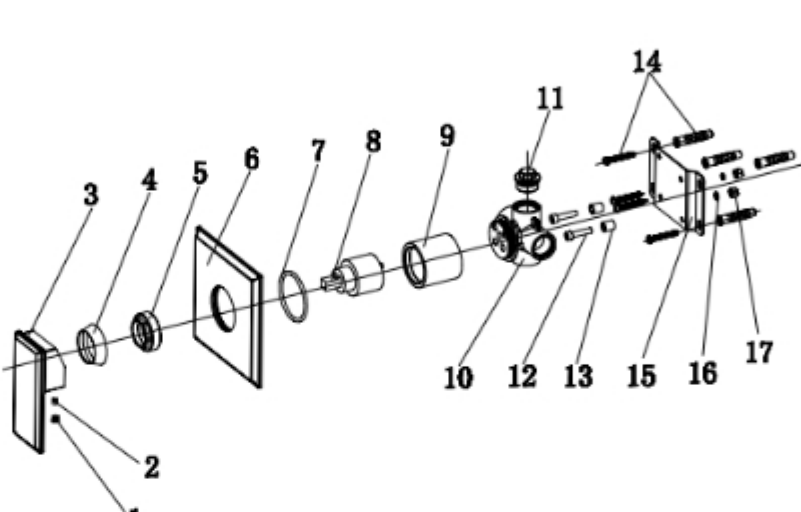


INSTALLATION STEPS

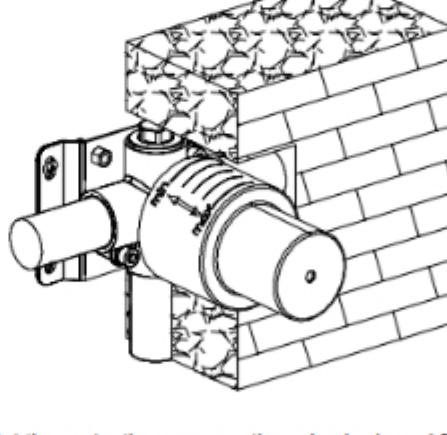
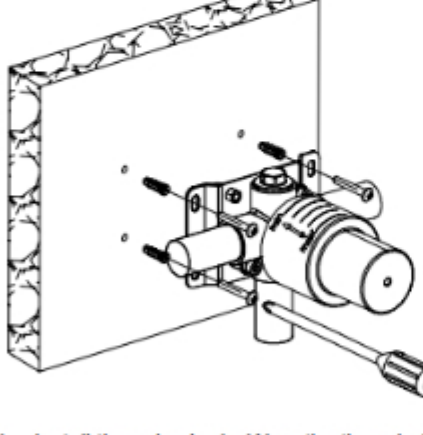


3. When the finished wall is complete, remove the protective cover.
4. Install the escutcheon, and handle. Tighten the set screw with an Allen wrench to secure.
5. Attach the shower arm escutcheon to the shower arm. Wrap the threaded portions of the shower arm with Teflon tape and connect the arm to the shower inlet. Adjust the direction of the water flow as needed. Attach the rainfall shower head to the shower arm.

| | |
|----|-----------------|
| 1 | SD10101000200 |
| 2 | M0105004 |
| 3 | SD15617000100 |
| 4 | SD10117000400 |
| 5 | SD10117000500 |
| 6 | SD15619000300 |
| 7 | OXQ50030 |
| 8 | FX0402 |
| 9 | SD10117000600 |
| 10 | SD10119000800-1 |
| 11 | SD10119000700-1 |
| 12 | M0305022 |
| 13 | SD10119000900 |
| 14 | M0805032 |
| 15 | SD10119001000 |
| 16 | SD10119001100 |
| 17 | M110405 |



INSTALLATION:



1. Install the valve body. Wrap the threaded portion of the joints in Teflon tape and connect the water inlet and outlet.
2. Put the protective cover on the valve body and finish the shower wall.

CARE & MAINTENANCE

For best results, keep the following in mind to retain the high quality finish of your faucets:

- Use a soft, dampened sponge or cloth. On no account should you use an abrasive material such as a brush, scouring pad or steel wool to clean surfaces.
- Test your cleaning agent solution on an inconspicuous area before applying to the entire faucet.
- Wipe surfaces clean and rinse completely with water immediately after applying cleaning agent.
- An ideal cleaning technique is to rinse faucet thoroughly and blot dry any water from the surface after each use.

This General diagram and installation instructions are not intended for any specific model, but is presented as a general guideline for Installations!