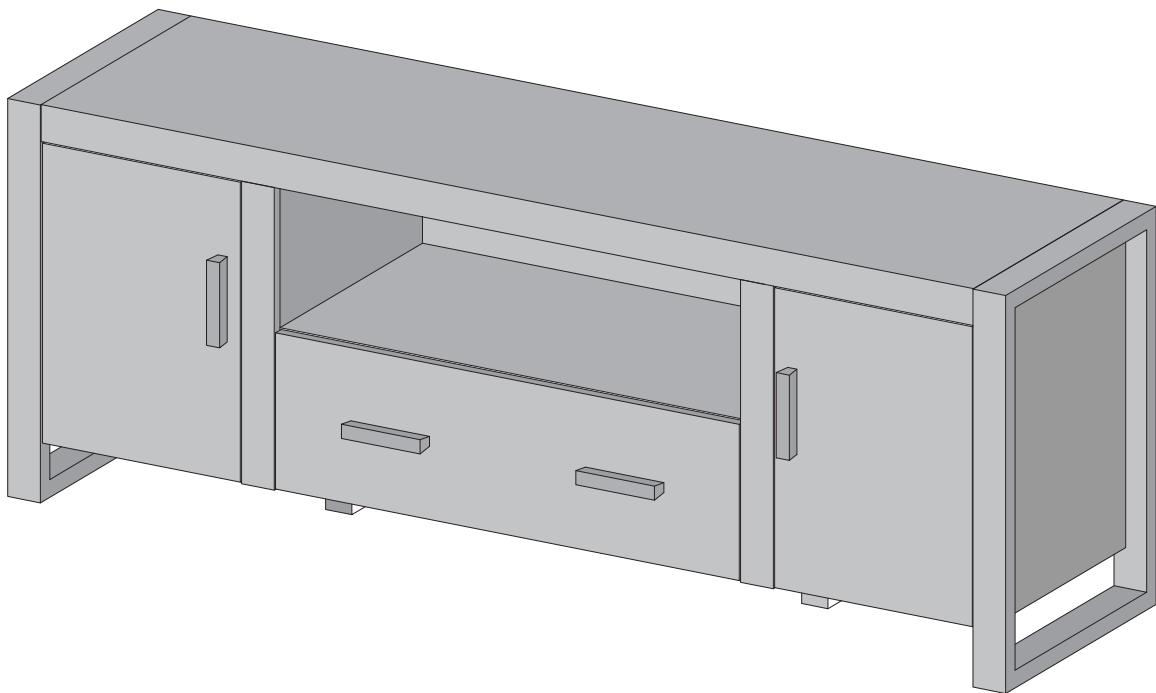




Item # :W60UBC22  
Assembly Instructions

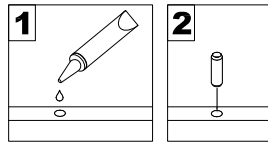


*Please visit our website for the most current instructions, assembly tips, report damage, or request parts. **[www.walkeredison.com](http://www.walkeredison.com)***

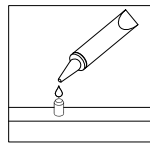
Revised 03/2017

# General Assembly Guidelines

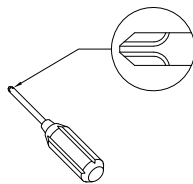
- I. Ensure that all parts and hardware are available before beginning assembly.
- II. Follow each step carefully to ensure the proper assembly of this product.
- III. Two people are recommended for ease in the assembly of this product.
- IV. The three main types of hardware used to assemble this product are : wood dowels , screws and bolts.
- V. The provided glue is to secure wood dowels in place . When first inserting dowels , locate the appropriate hole for the dowel , place a small amount of glue in the hole and insert the dowel . Wipe away excess glue immediately.



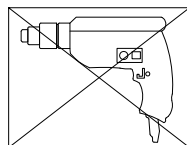
In future assembly steps when dowels are necessary to attach assembly parts together , place a small amount of glue on the end of the dowel before attaching parts together . Wipe away excess glue immediately.



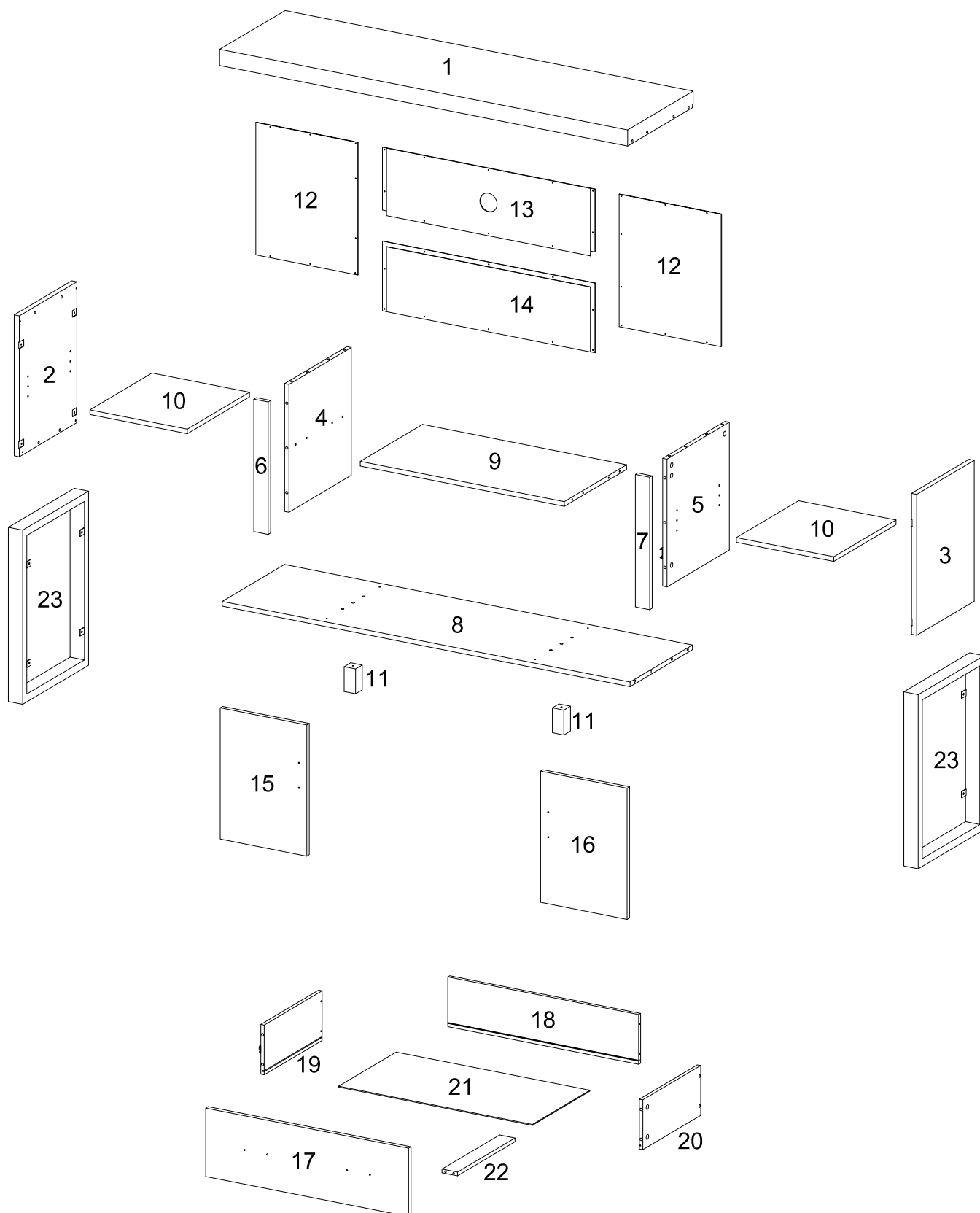
- VI. A Phillips head screwdriver is required for the assembly of this product .




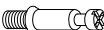



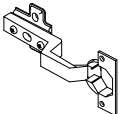
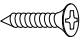

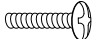

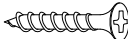
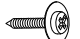



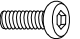

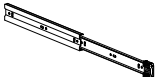
- VII. Power tools should not be used to assemble this product .



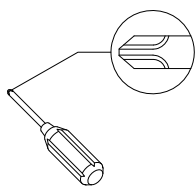
# Parts List



# Hardware List

A		Ø8x30mm	Wooden dowel	24	pcs
B		Ø6x35mm	Cam bolt	25	pcs
C		Ø15x11mm	Cam lock	21	pcs
D		Ø15x9.5mm	Cam lock	4	pcs
E		Ø6x50mm	Bolt	6	pcs
F			Hinge	4	pcs
G		Ø3.5x15mm	Screw	16	pcs
H			Handle	4	pcs
J		Ø4x22mm	Bolt	8	pcs
K		Ø8x5x16mm	Shelf support pin	8	pcs
L		Ø8x4x38mm	Screw	5	pcs
M		Ø7x3x12mm	Screw	25	pcs
N		M4mm	Wrench	1	pc
P		Ø30mm	Sticker	25	pcs
Q			Glue tube	2	pcs
R		Ø6x12mm	Bolt	8	pcs
S		Ø3x12mm	Screw	12	pcs
T			Keyboard tray slider	2	pcs

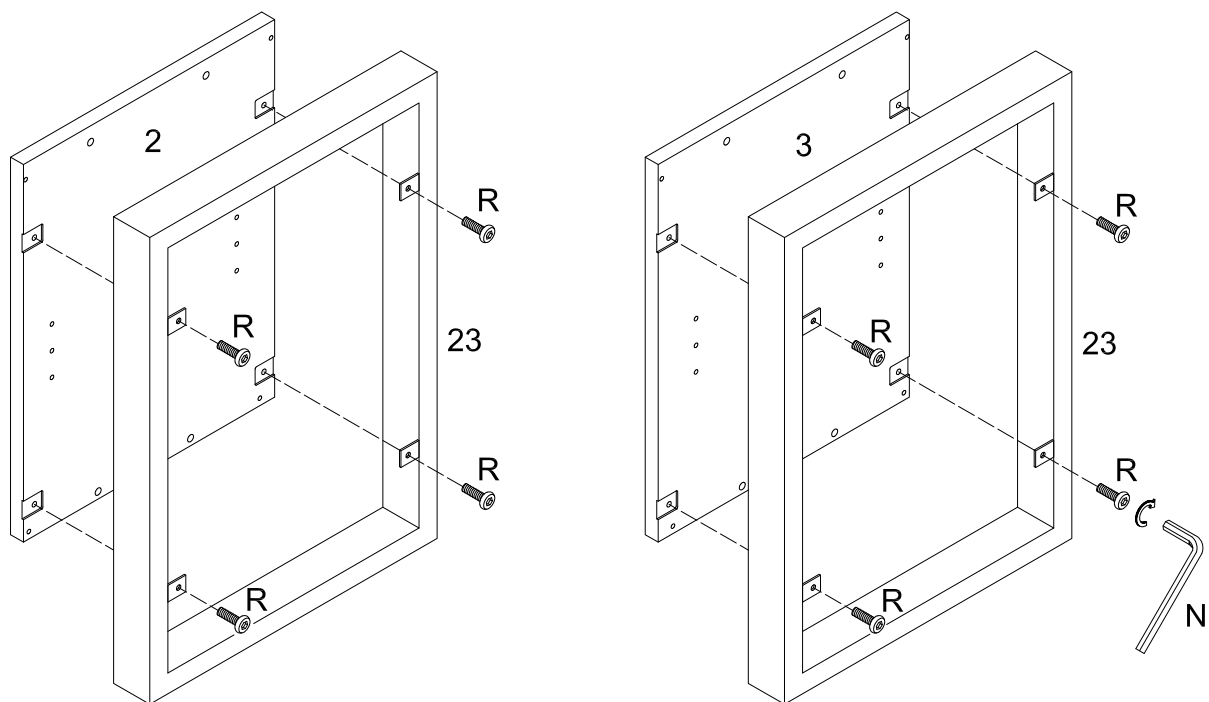
\* Note: This piece comes preassembled for shipping purposes and must be disassembled to complete the TV Stand assembly.



Philips head screwdriver required for assembly  
(not included)

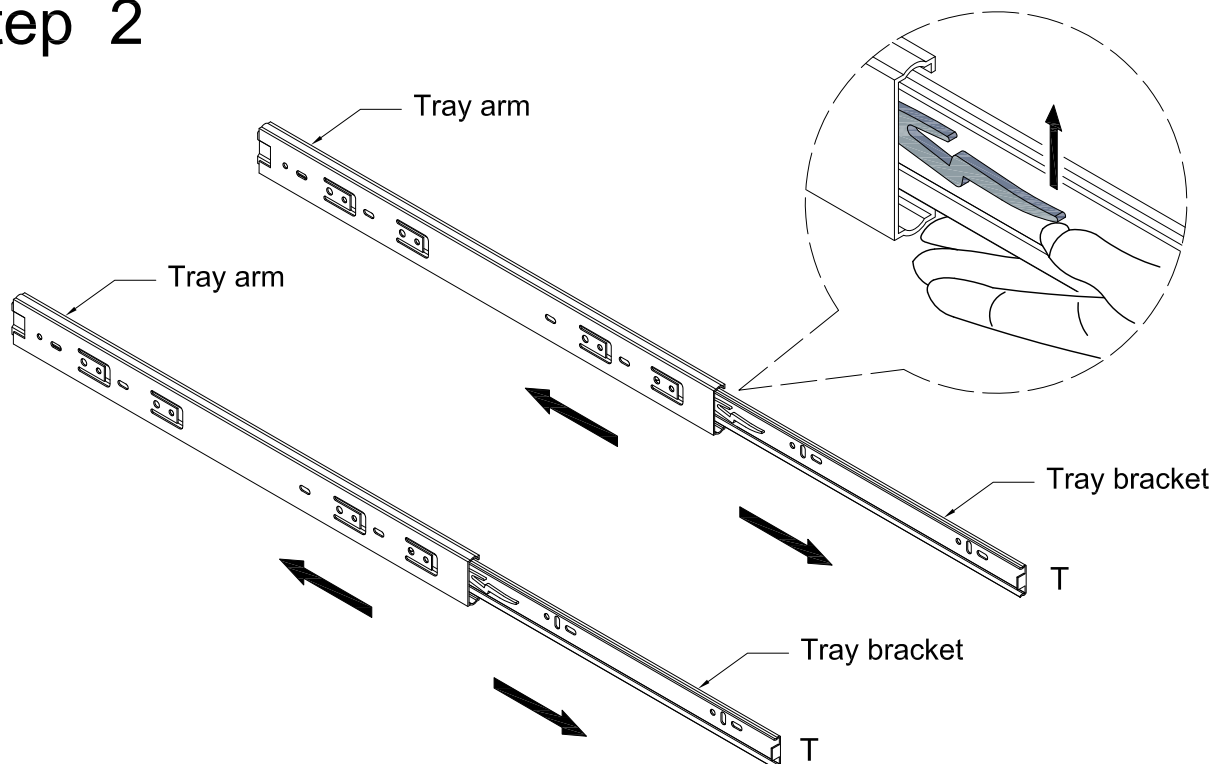
*The hardware quantities listed above are required for proper assembly.  
Some extra hardware may also have been included.*

## Step 1



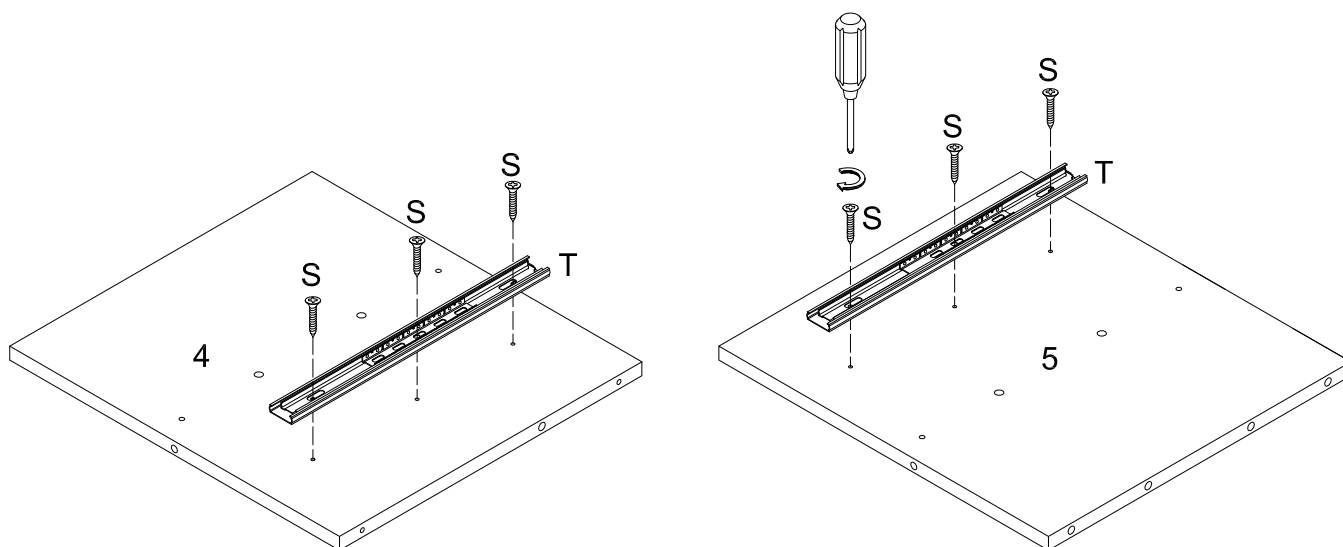
Use wrench (N), bolt (R) to secure the side frame (23) to the side panel (2,3).

## Step 2



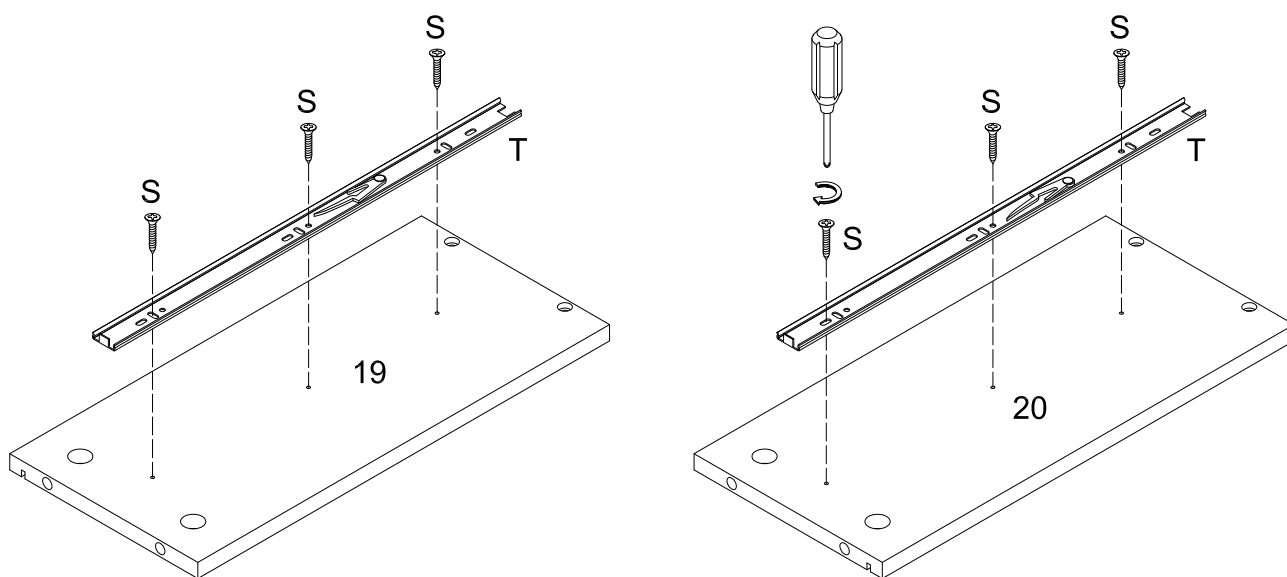
Disassemble keyboard tray slider (T) by sliding the tray arm and tray bracket apart. Depress the small lever of the tray bracket and carefully pull the two pieces apart. Repeat this process for both keyboard tray sliders (T).

## Step 3



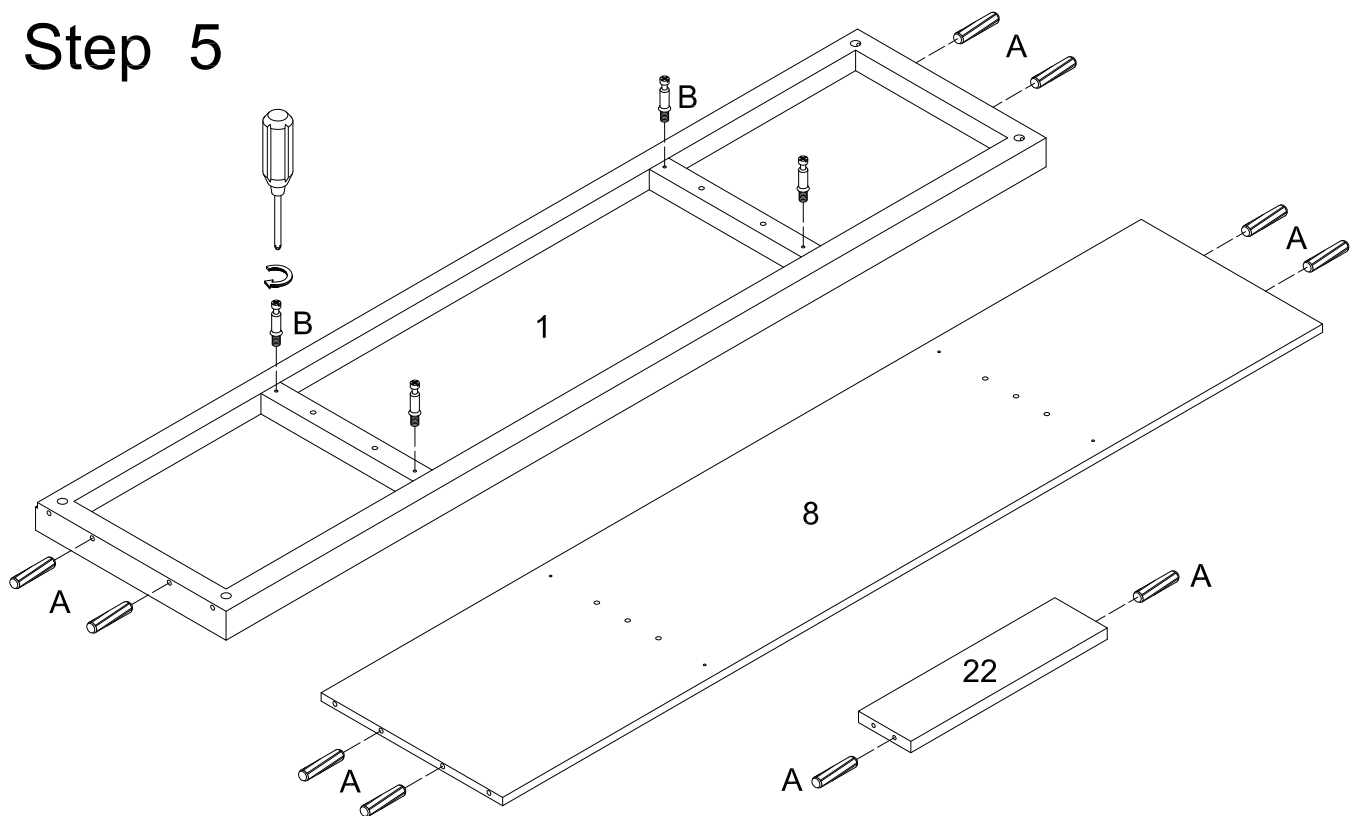
Secure screw (S) to the tray arm of keyboard tray slider (T) to the middle side panel (4,5).

## Step 4



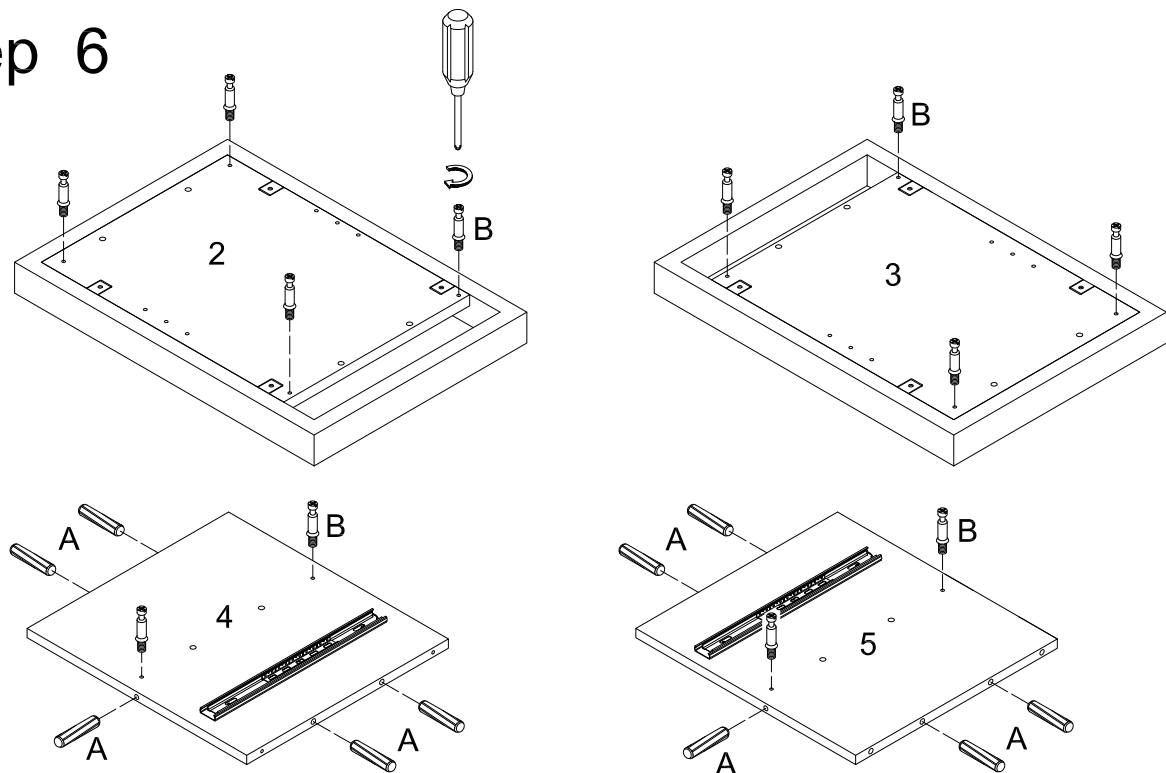
Secure screw (S) to the tray bracket of keyboard tray slider (T) to the drawer side panel (19,20).

## Step 5



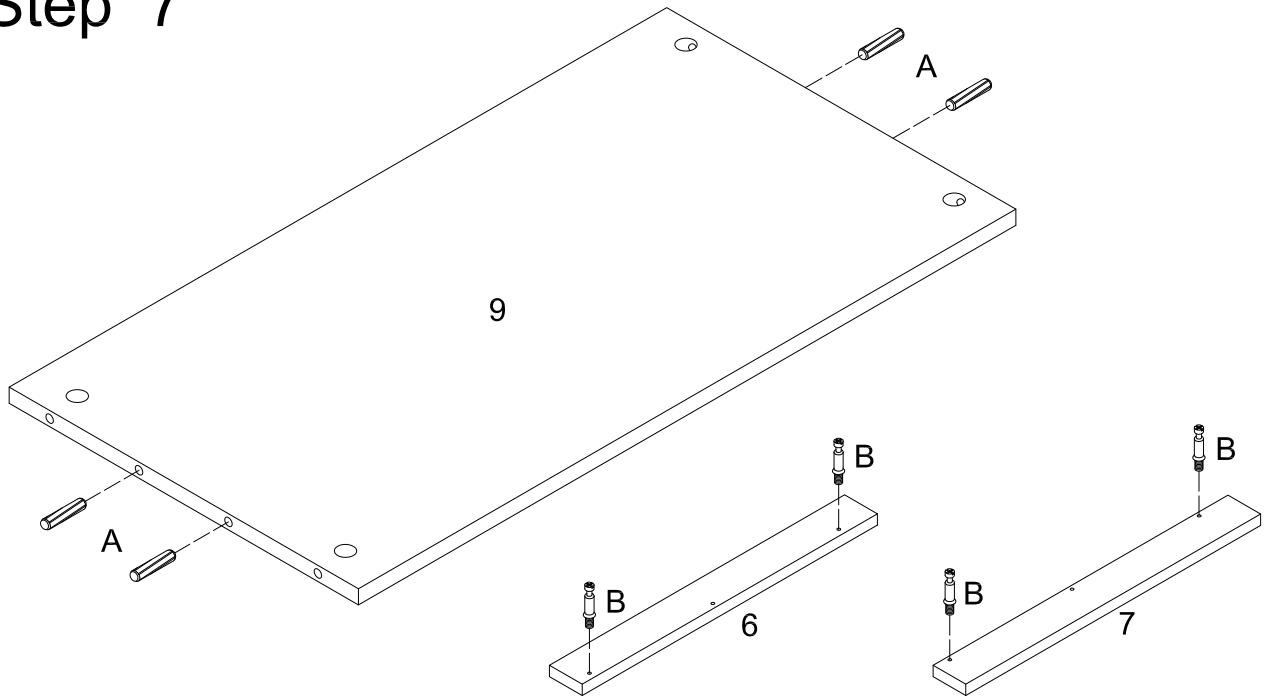
Secure cam bolts (B) into top panel (1). Insert wooden dowels (A) into bottom panels (1,8,22).

## Step 6



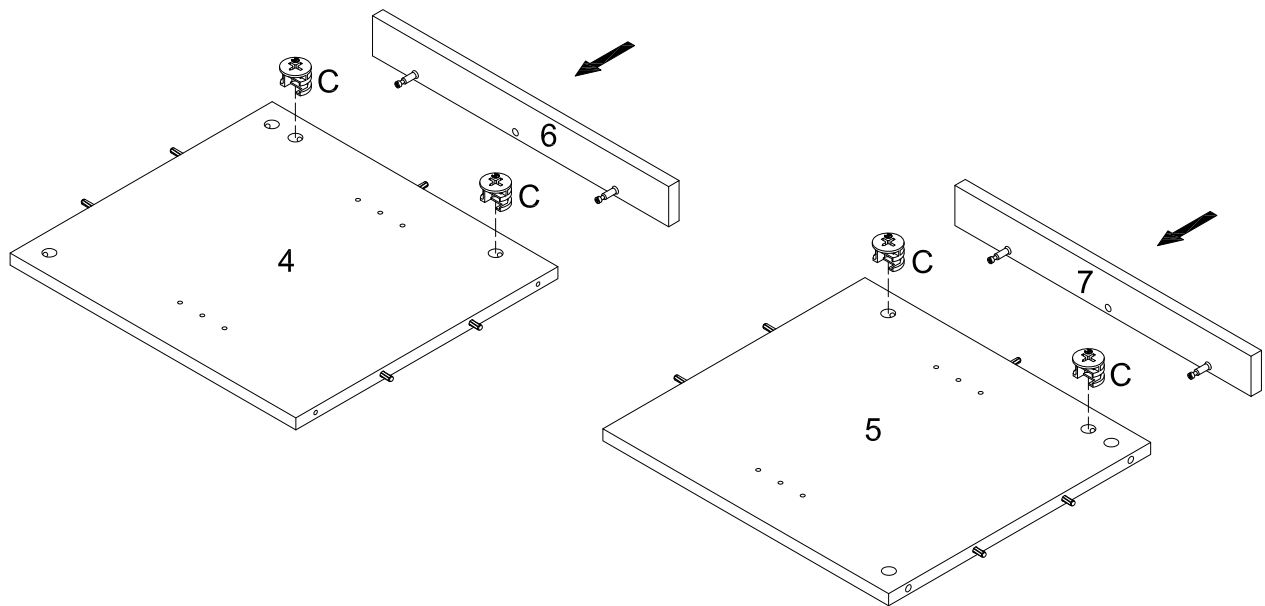
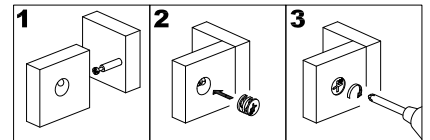
Secure cam bolts (B) into side panels (2, 3, 4, 5). Insert wooden dowels (A) into side panels (4,5).

## Step 7



Insert wooden dowels (A) into panel (9). Secure cam bolts (B) into panels (6, 7).

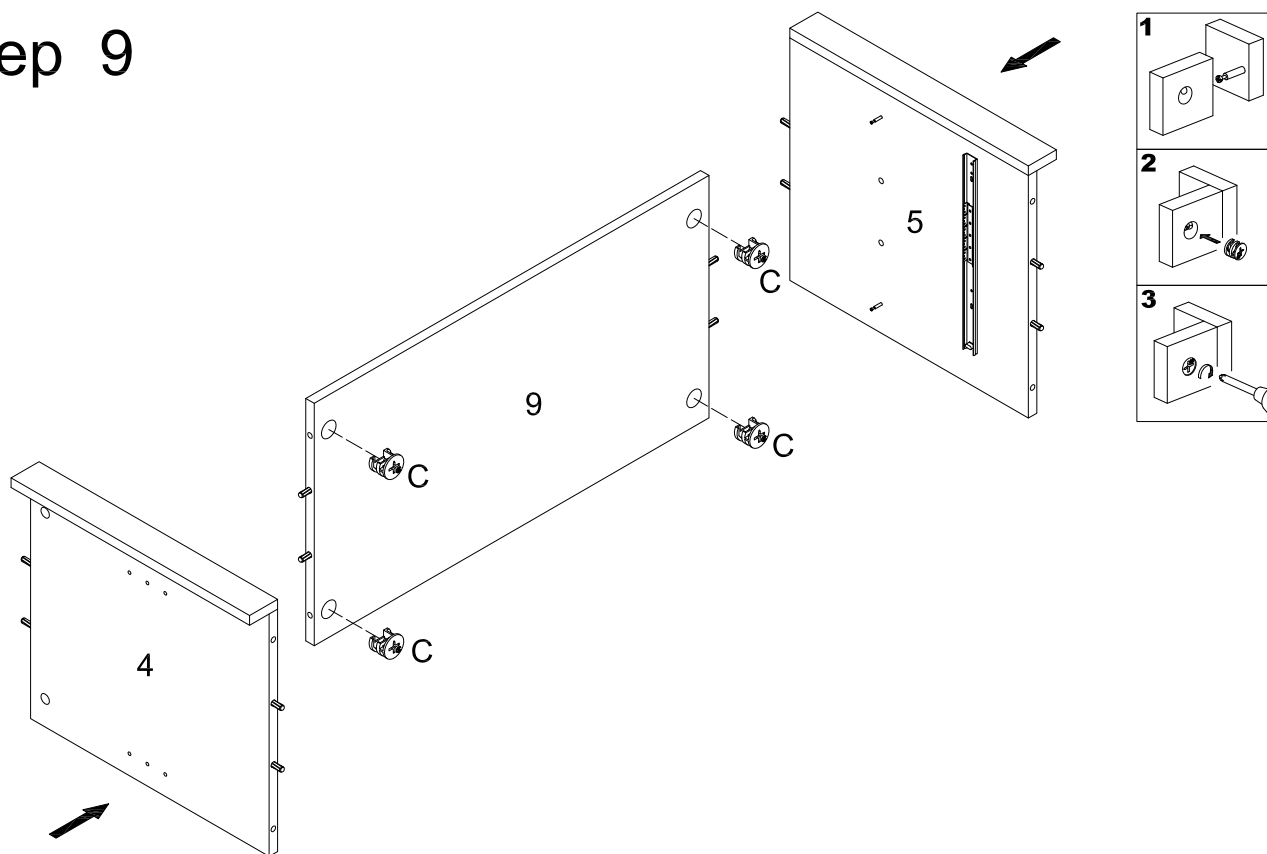
## Step 8



Attach panel (6) to panel (4) using cam locks (C). Attach panel (7) to panel (5) using cam locks (C).

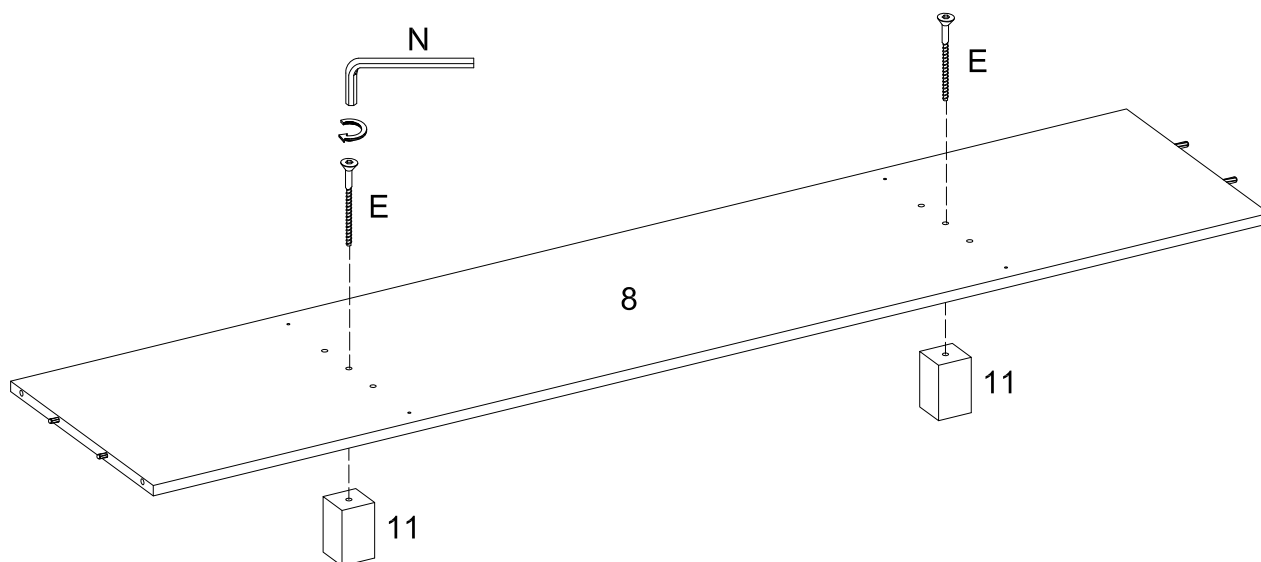


## Step 9



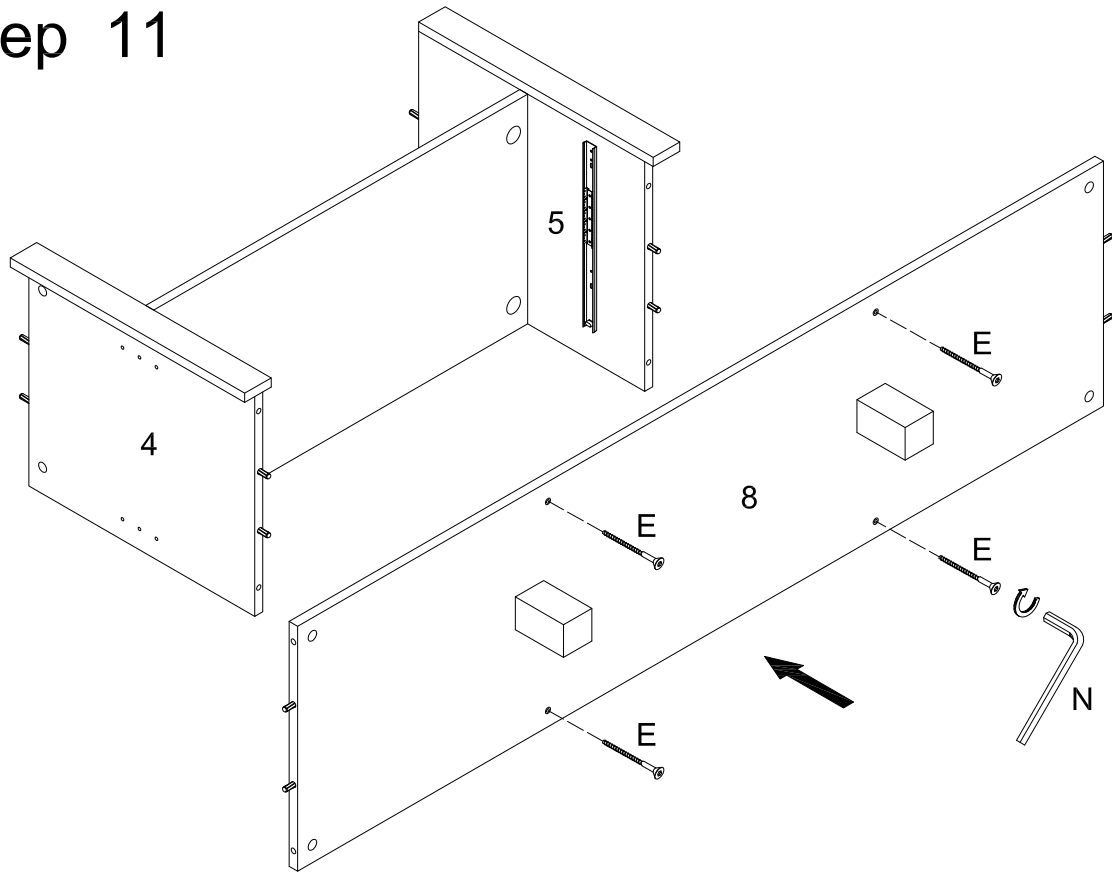
Attach side panels (4, 5) to shelf panel (9) using cam locks (C).

## Step 10



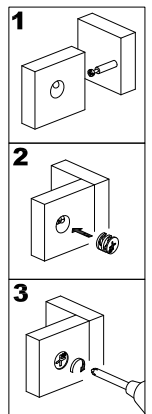
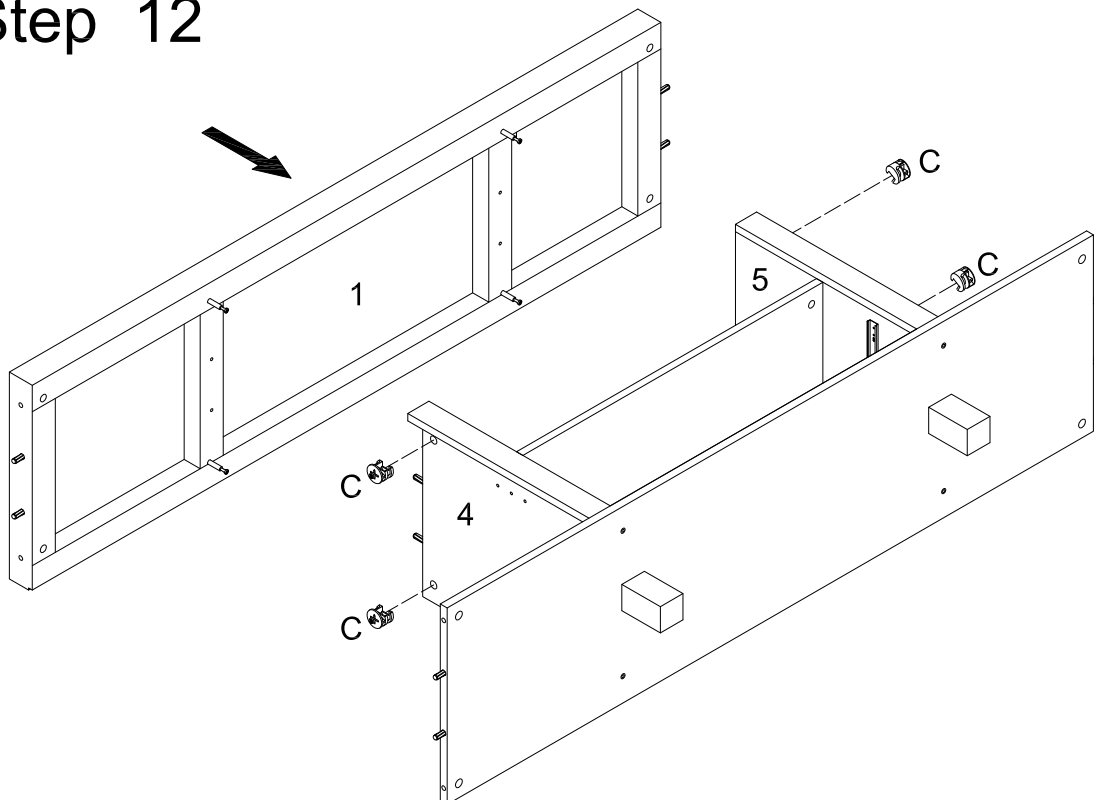
Secure legs (11) to bottom panel (8) using screws (E).

## Step 11



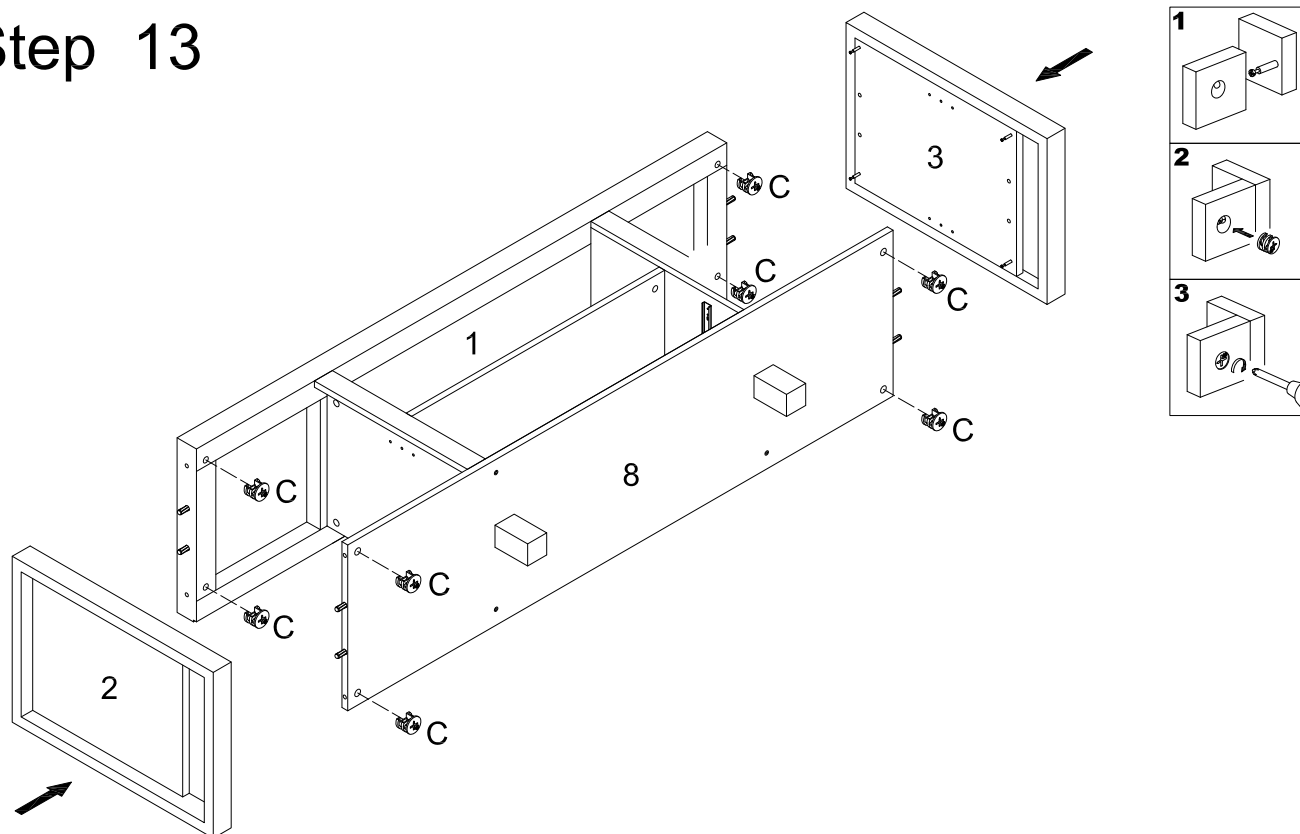
Attach side panels (4,5) to bottom panel (8) using screws (E).

## Step 12



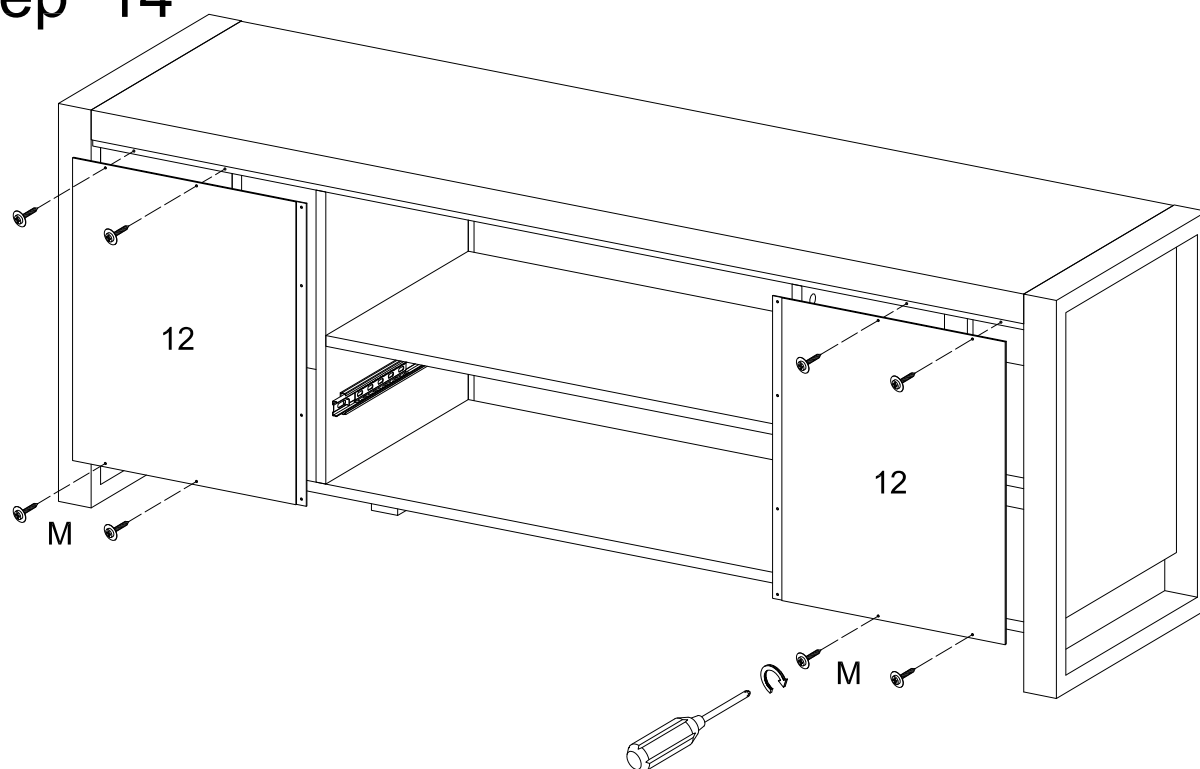
Attach top panel (1) to side panels (4,5) using cam locks (C).

## Step 13



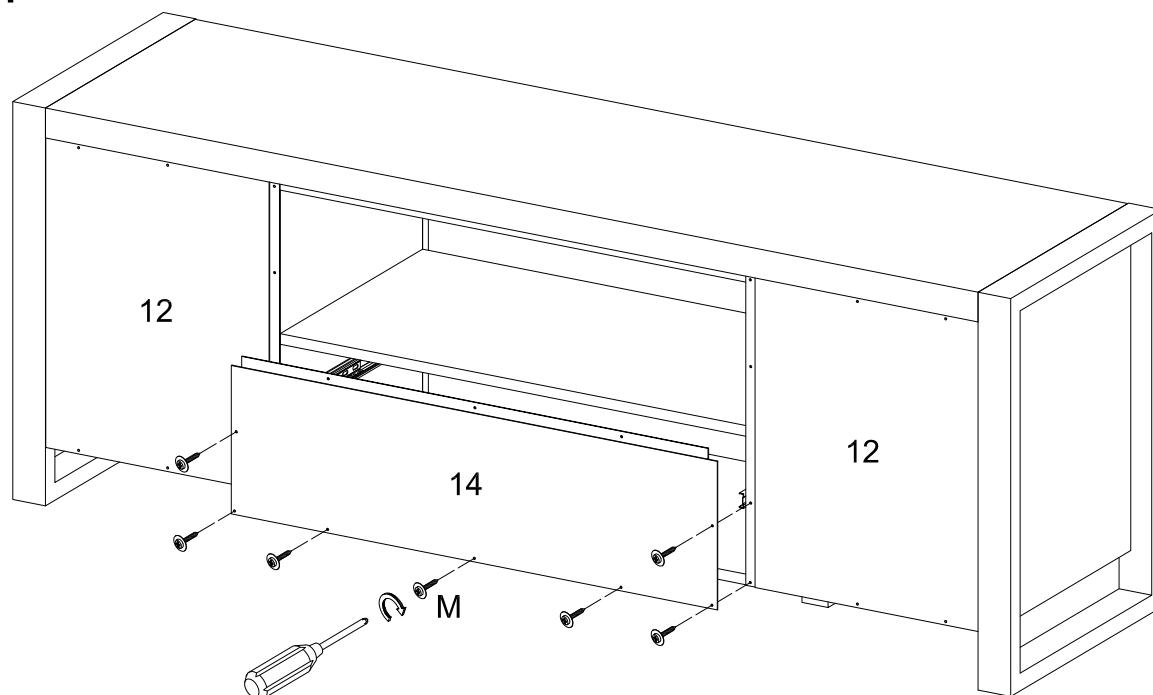
Attach side panels (2,3) to assembled unit using cam locks (C).

## Step 14



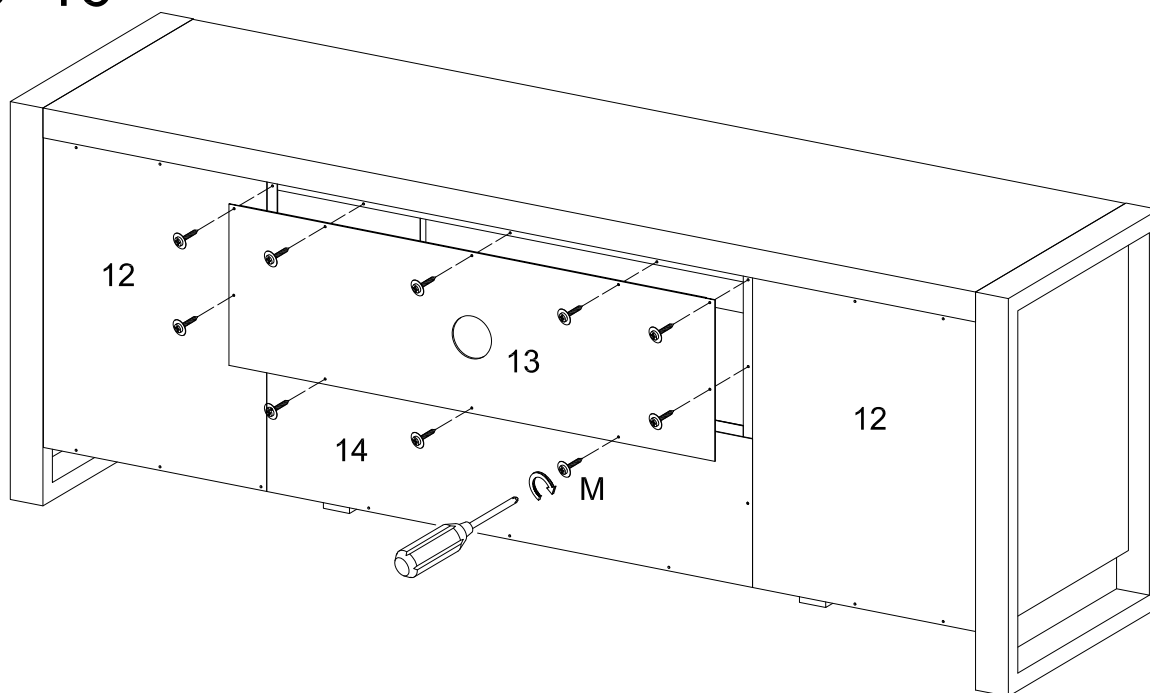
Secure back panels (12) using screws (M).

## Step 15



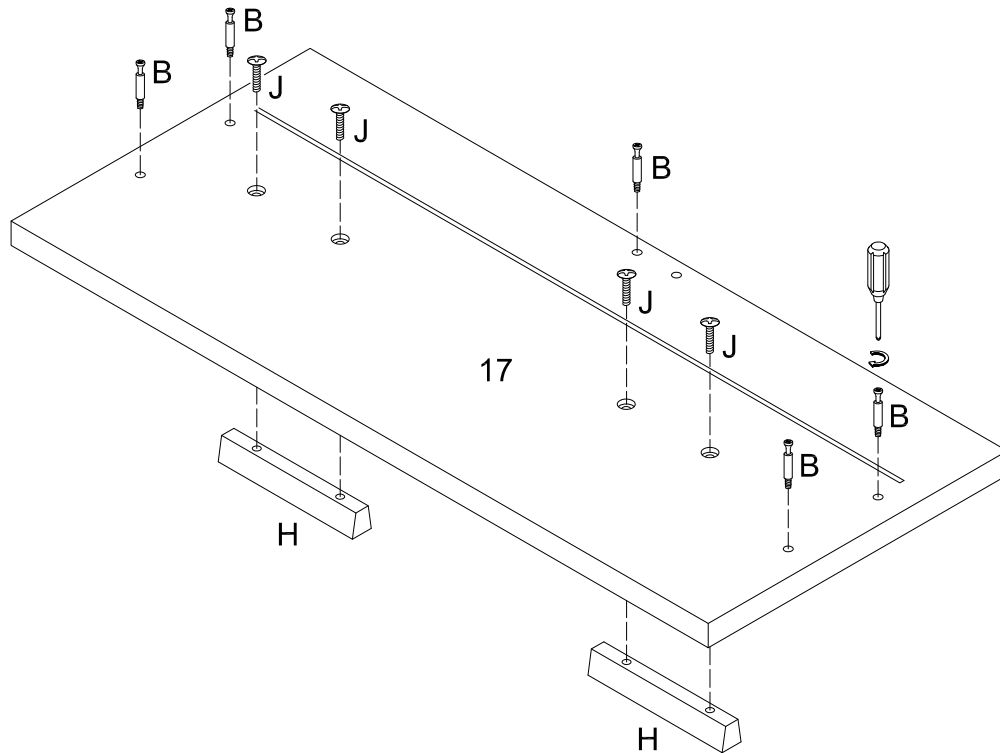
Secure back panel (14) using screws (M).

## Step 16



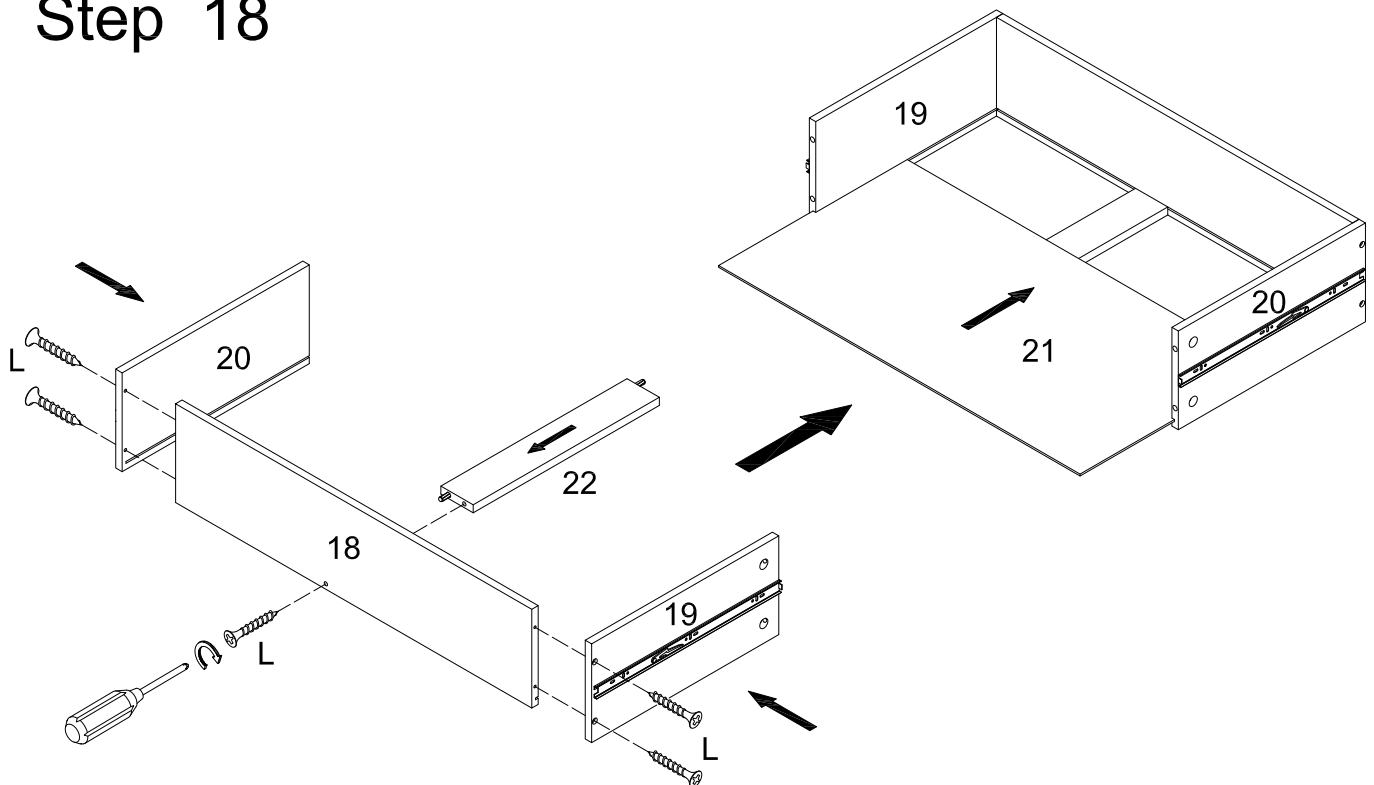
Secure back panel (13) using screws (M).

## Step 17



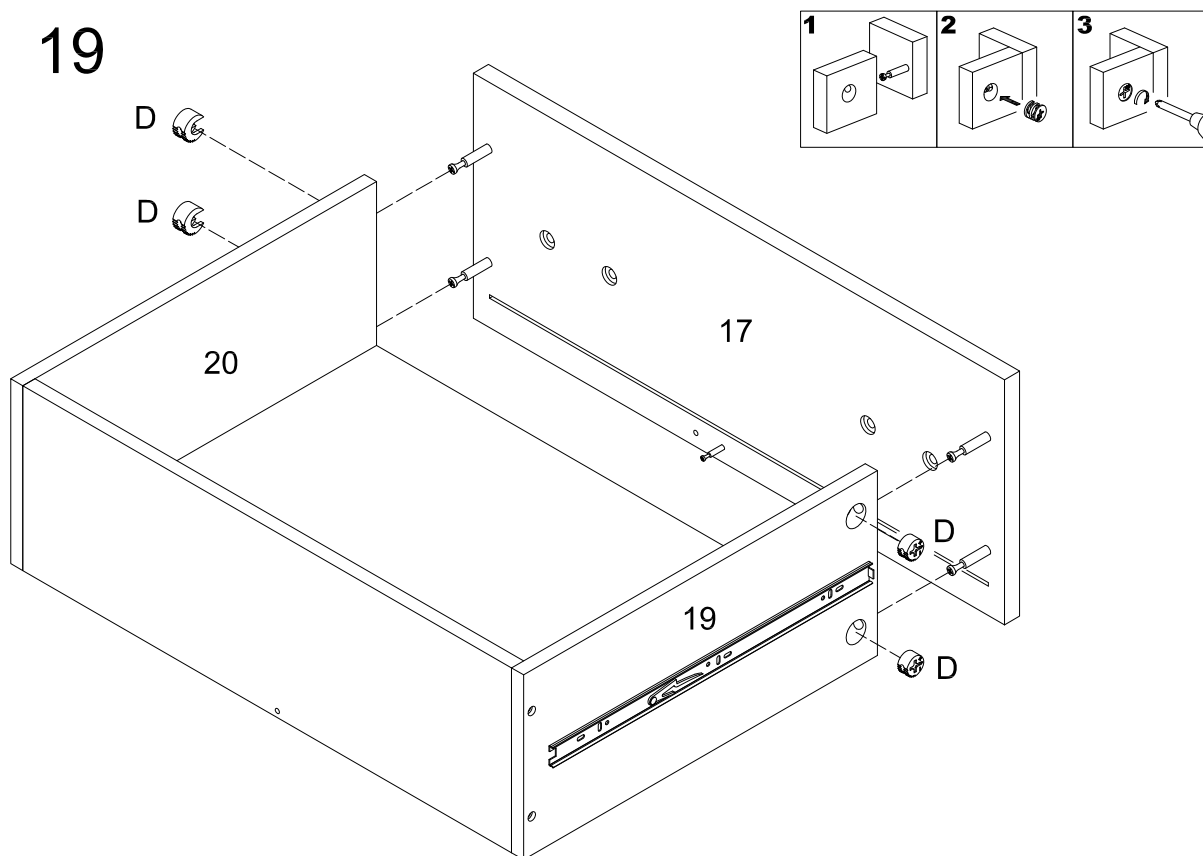
Secure cam bolts (B), attach handles (H) to panel (17) using bolts (J).

## Step 18



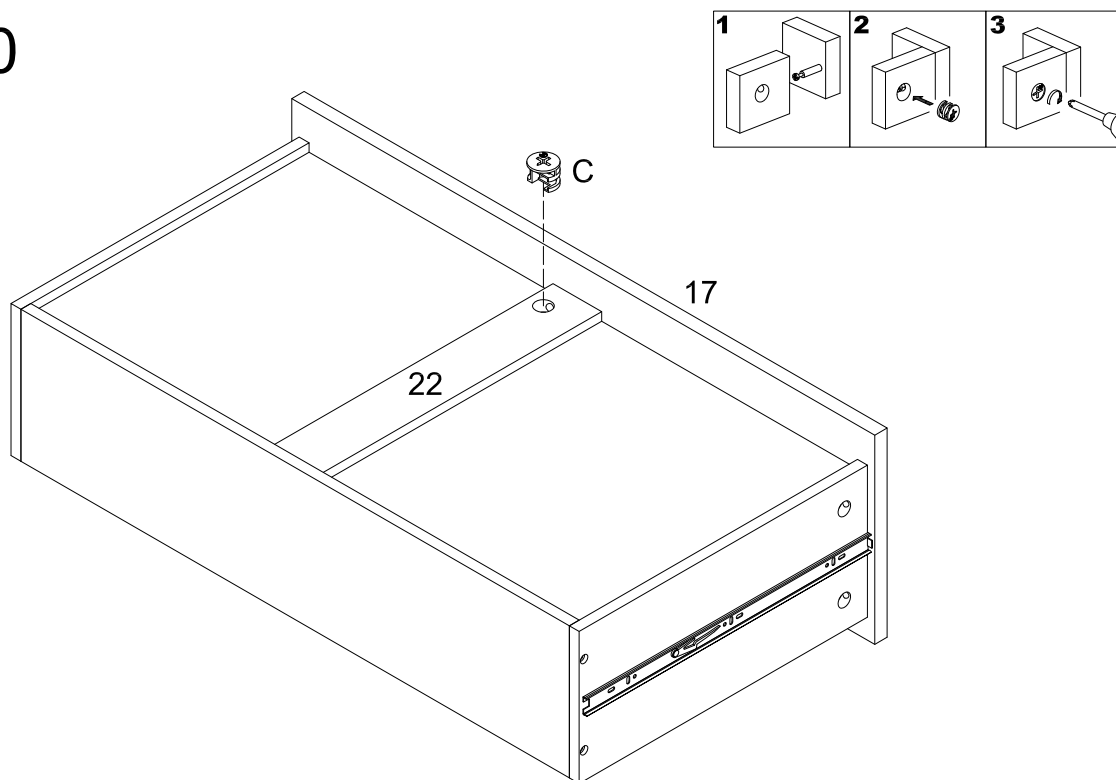
Attach panels (19, 20) to panel (18) using screws (L). Attach support bar (22) to panel (18) using screw (L). Carefully slide panel (21) into the thin grooves as shown in the diagram.

## Step 19



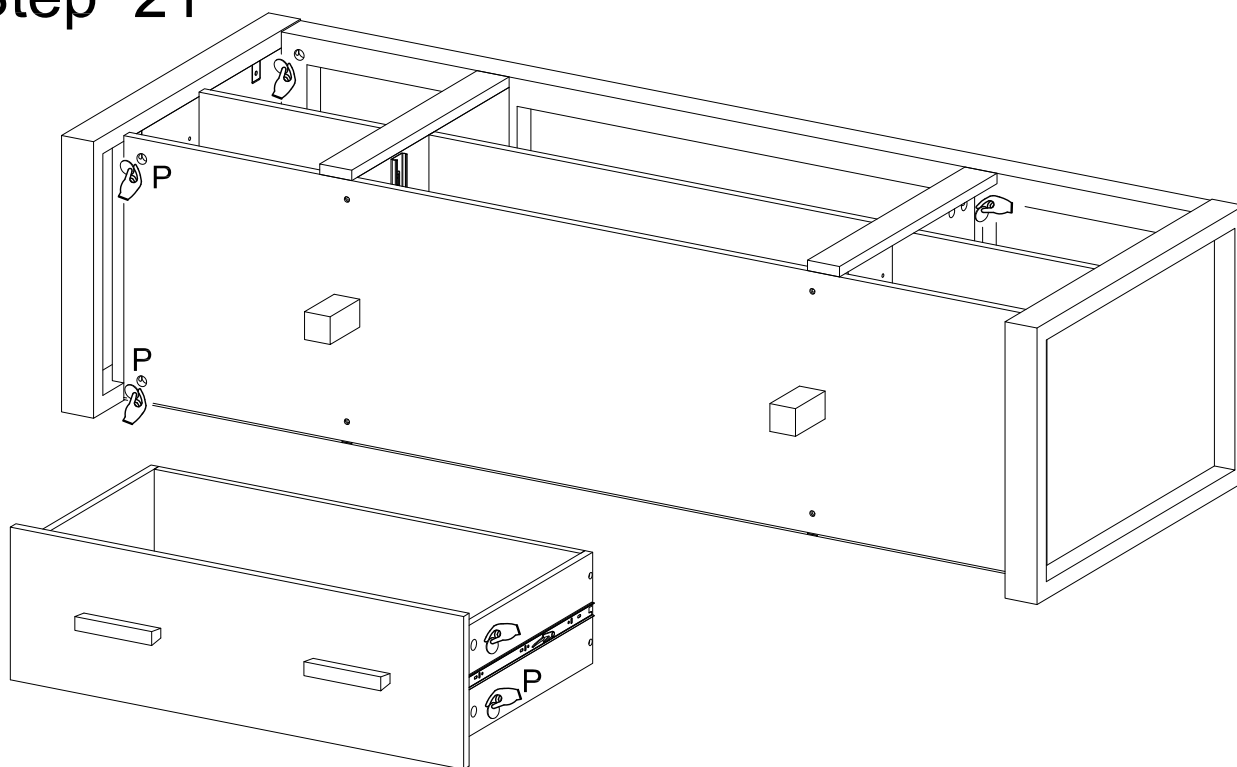
Attach panel (17) to drawer assembly using cam locks (D).

## Step 20



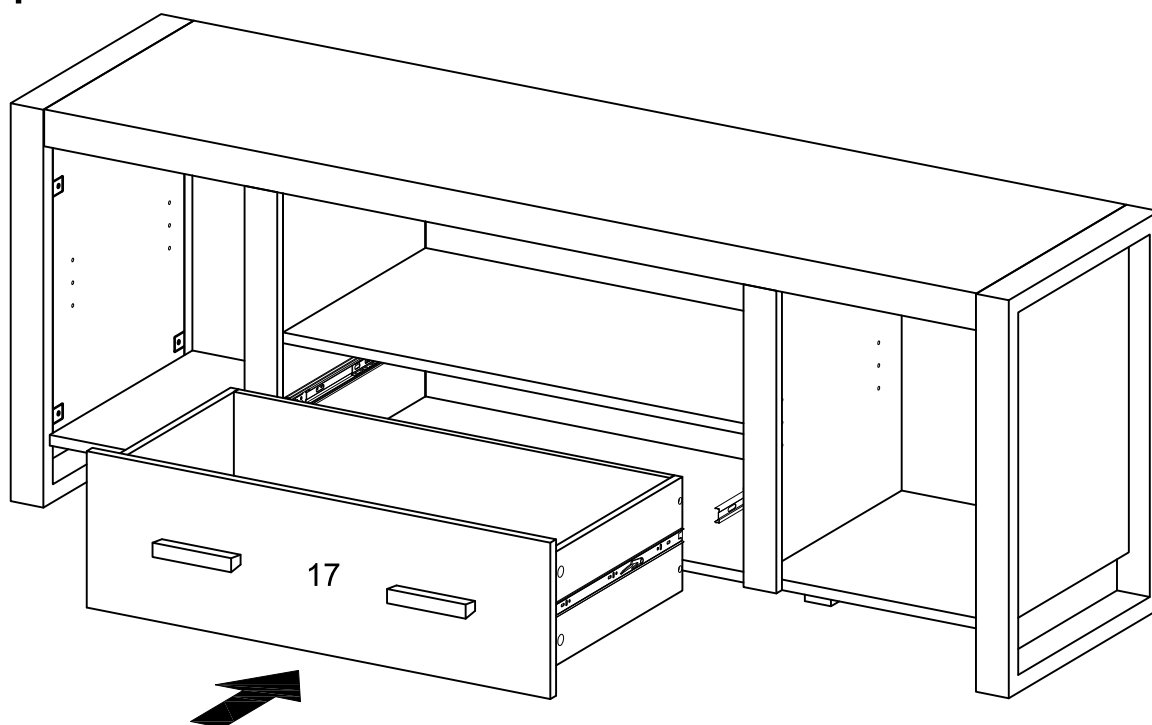
Attach panel (17) to drawer assembly using cam locks (D).

## Step 21



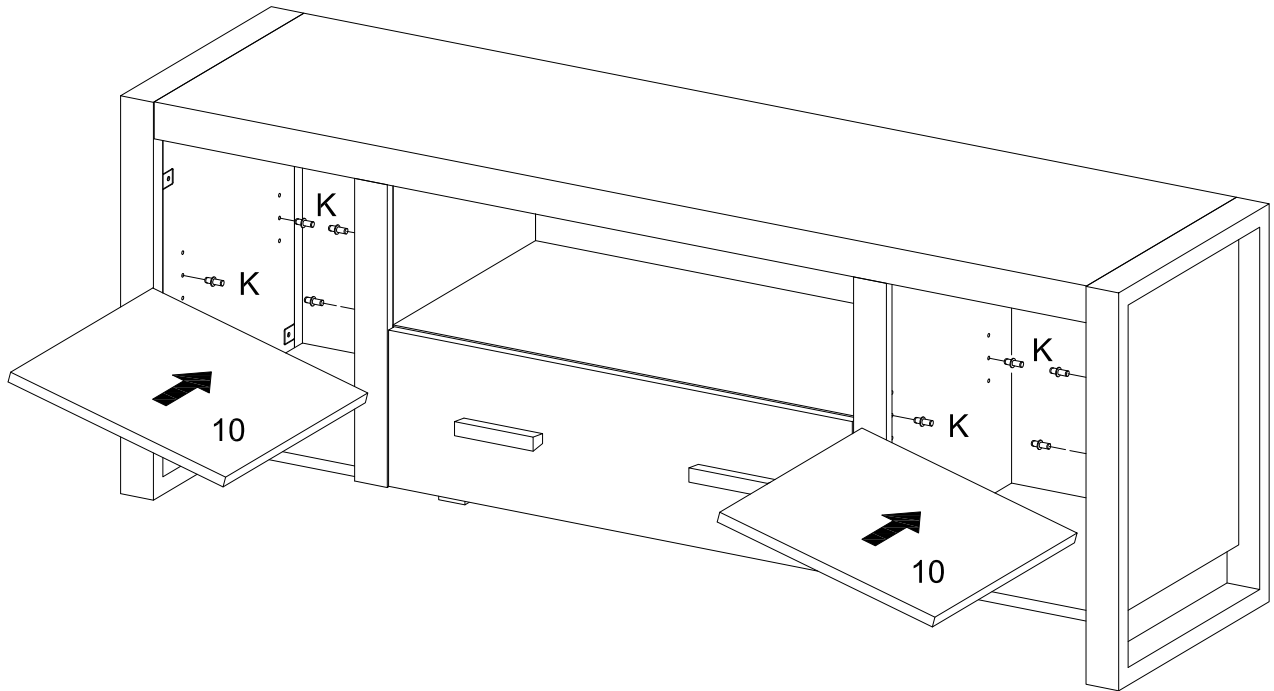
Cover all cam locks using stickers (P).

## Step 22



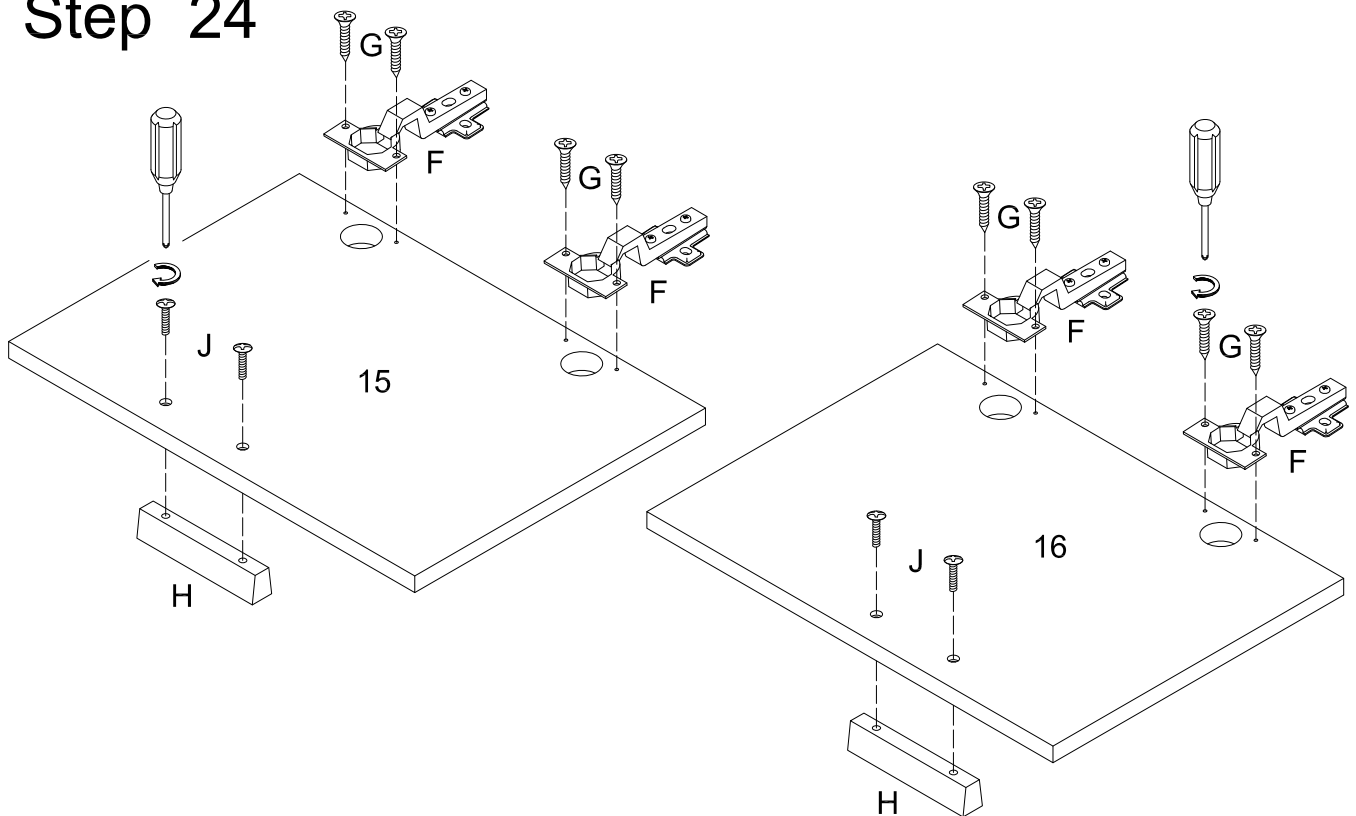
Carefully insert drawer assembly into assembled unit.

## Step 23



Insert shelf support pins (K) and carefully insert shelves (10).

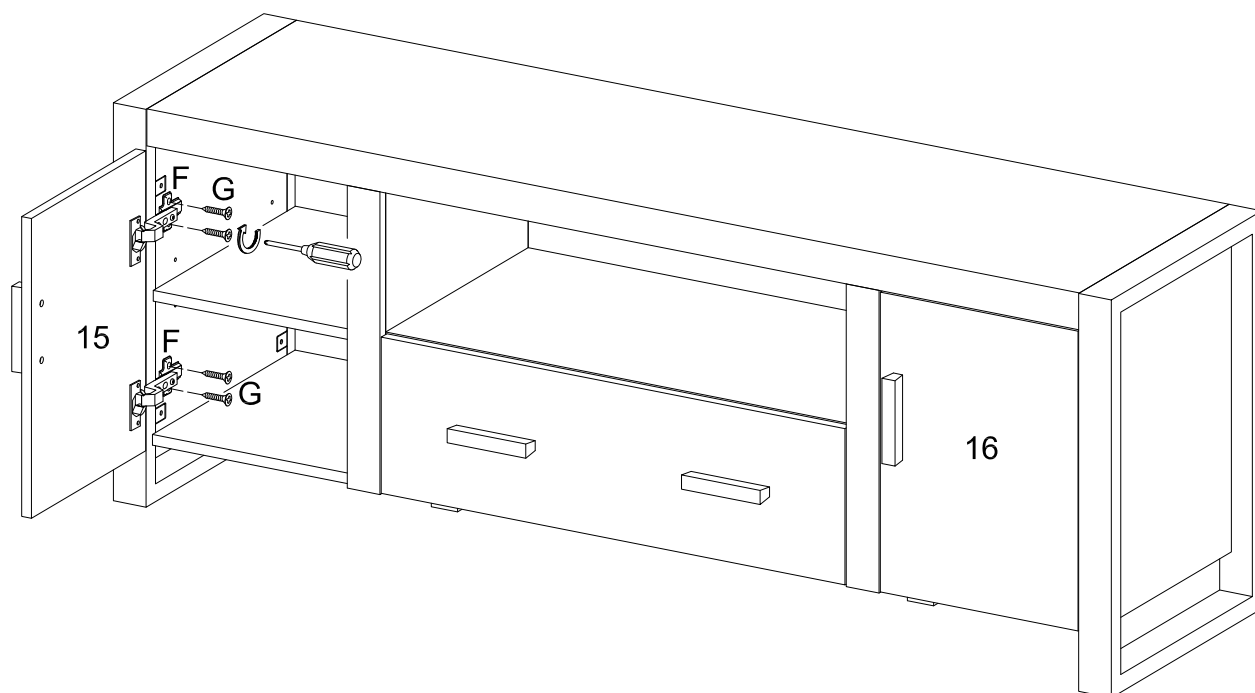
## Step 24



Attach hinge (F) to doors (15, 16) using screws (G). Attach handles (H) using bolts (J).

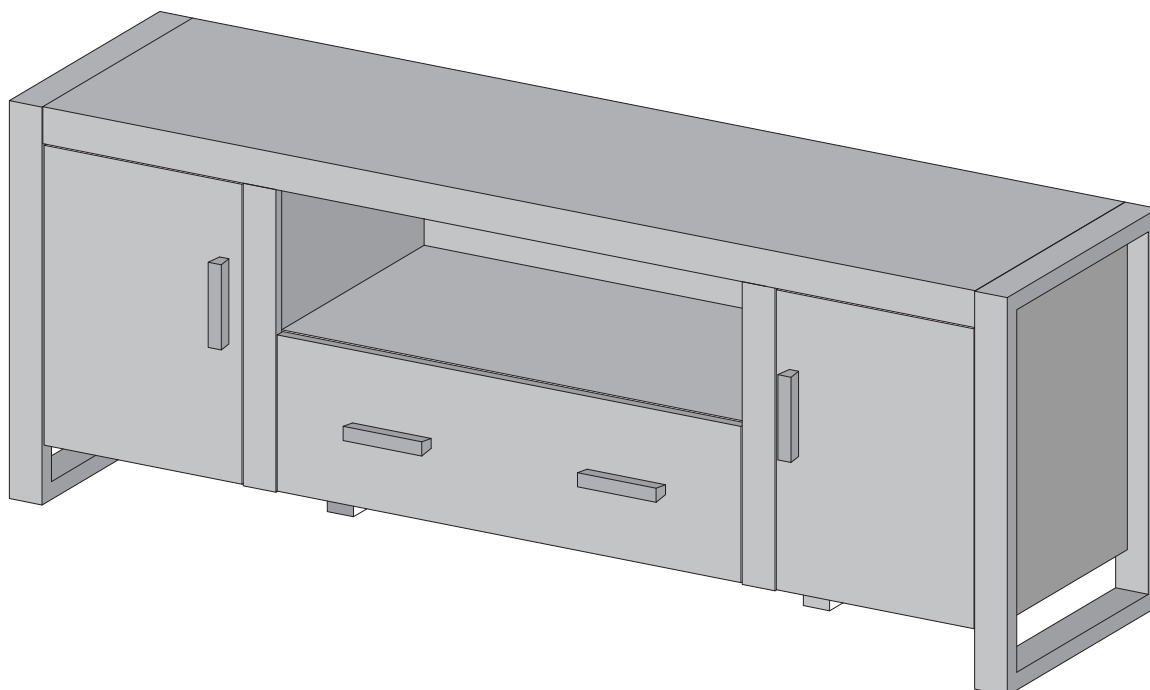


## Step 25



Assemble the wooden leg (15,17) to the front & bottom panel (2,9,11) and secure it with cam lock (C).

## Step 26



## Final Assembly