

CARE AND MAINTENANCE

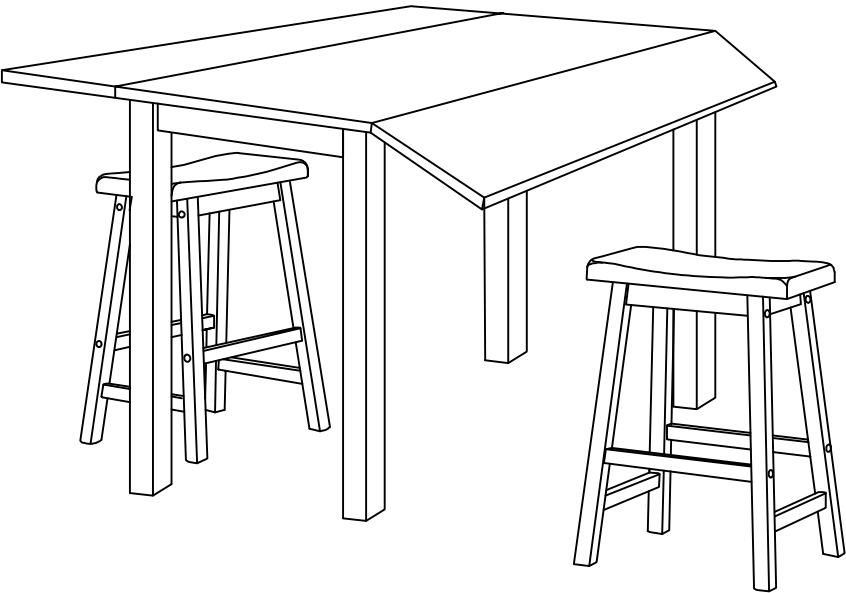
Always use felt pads under all articles to prevent discoloration or softening of the lacquer. Plastic and rubber bases on items can discolor wood. Wipe up spills immediately and avoid common hazards such as hot dishes, harsh solvents and abrasives. Cleaning should be done with a soft lint free cotton cloth dampened with water.



MODEL# AMH8502A
PRODUCT DIMENSION: 36"W X36"L X 36"H

NOTICE

- *Please make sure that you have all parts indicated before you begin assembly of this item
- *This item should be assembled on a soft surface to prevent scratching the finish during assembly
- *This item may require periodic tightening



List Of Parts	QTY
1. Table Top	1
2. Table Leg	4
3. Leg Frame	4
4. Seat	2
5. Stretcher	4

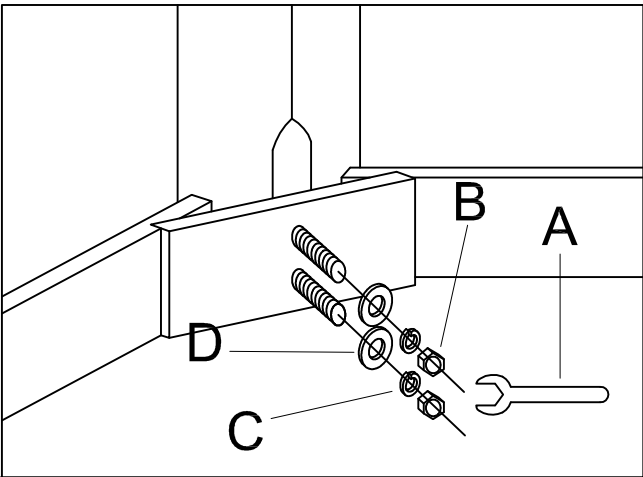
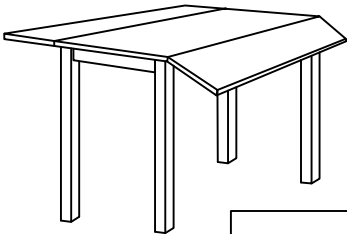
PREPARATION

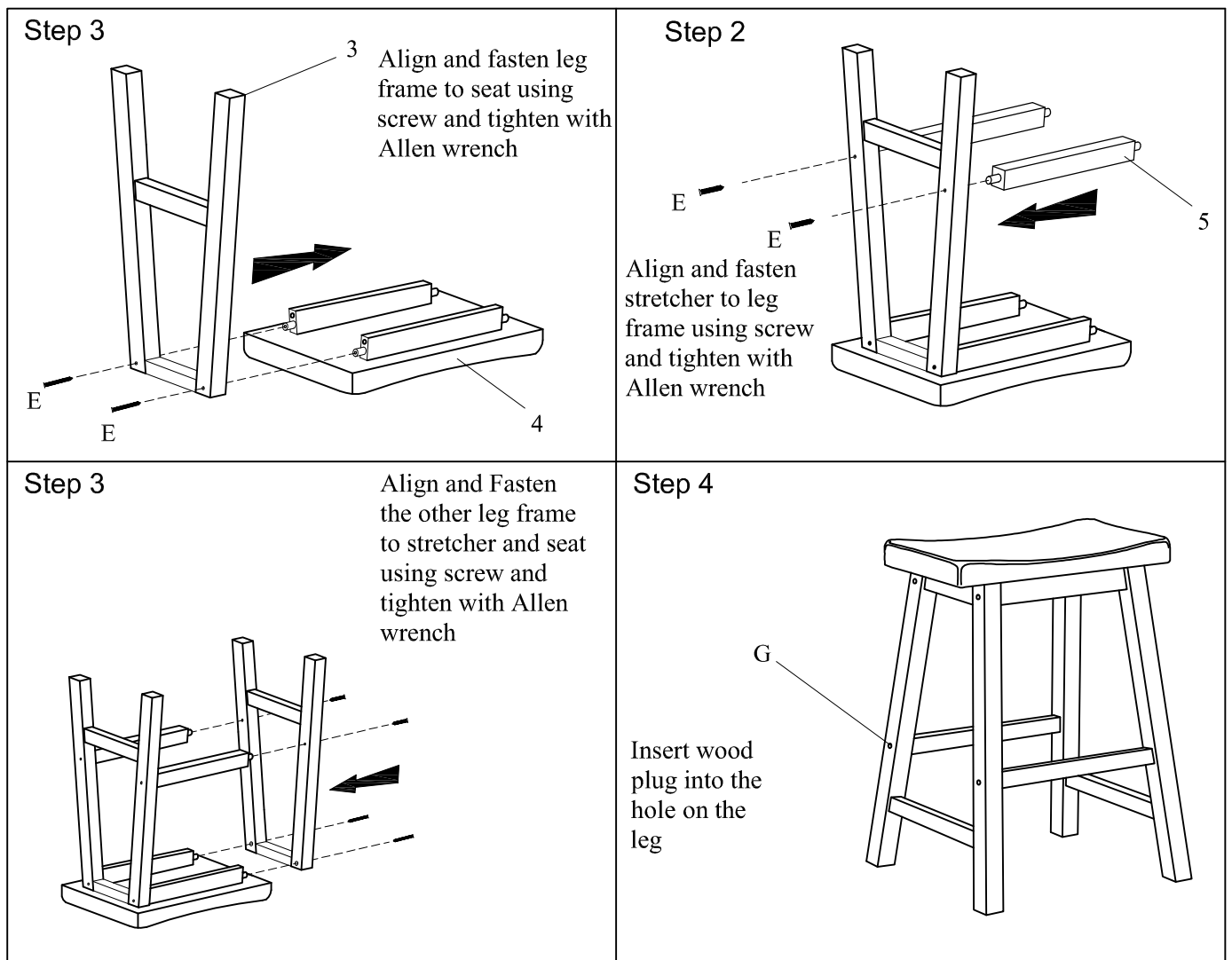
Before beginning assembly of product, make sure all parts are present. Compare parts with package contents list and hardware contents list. If any part is missing or damaged, do not attempt to assemble the product. Estimated Assembly Time:10 minutes. Tools Required for Assembly (included): N/A

HARDWARE LIST	QTY
A. SPANNER	1
B. HEX NUT	8
C. SPRING WASHER	8
D. FLAT WASHER	8
E. Wood Screw	16
F. Allen Wrench	1
G. Wood Plug	16

Step 1: Attach Leg (2) to table Top (1) using Flat washer (D),Spring Washer (C) and Hex Nut (B). Tighten Hex Nut (B) with Spanner (A).

Step 2: Repeat Step 1 to assemble the other three legs(2).





COMPLETE

