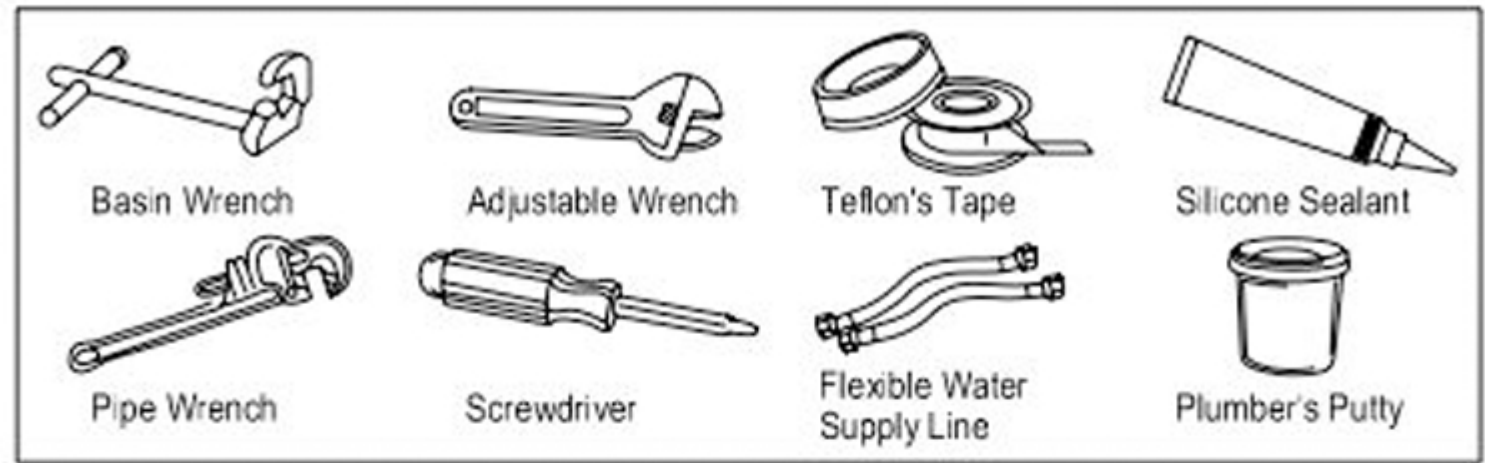


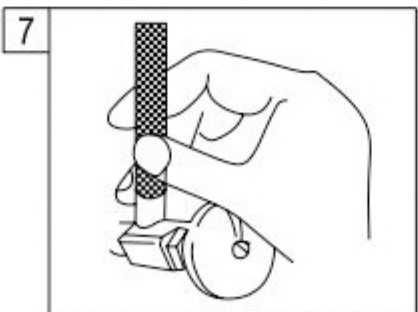
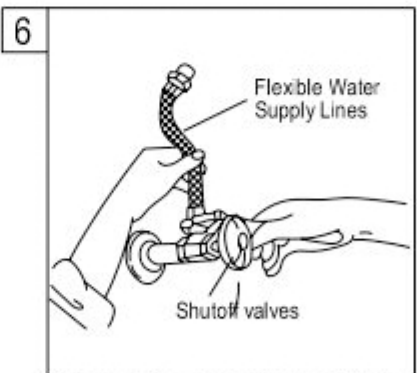
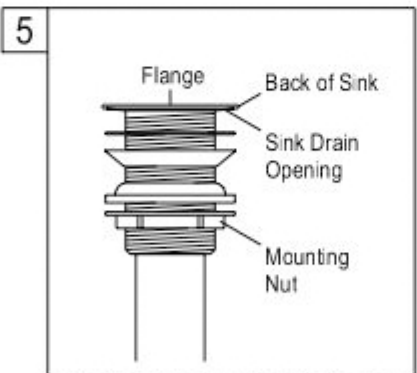
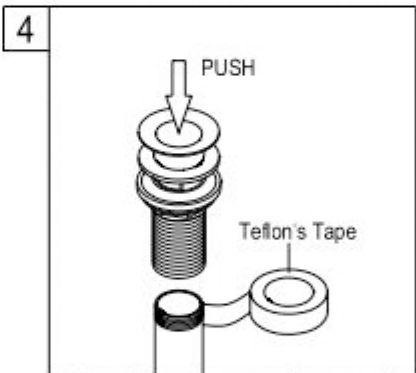
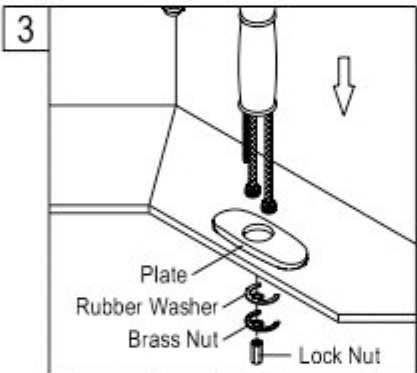
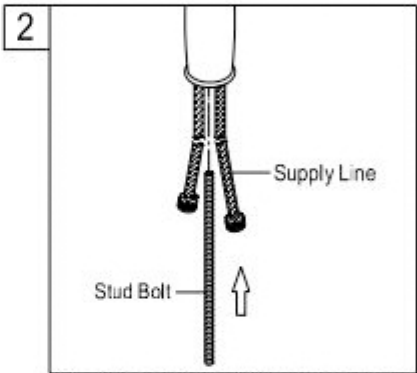
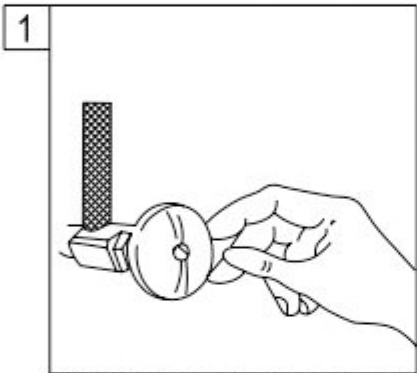
Verona Swan Gold Vanity Sink Faucet



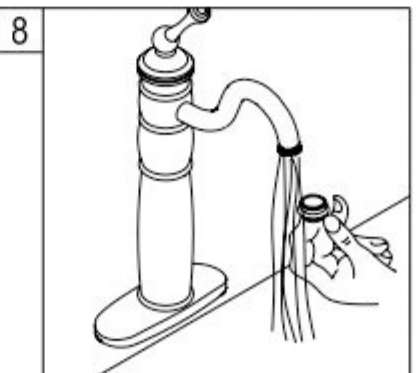
INSTALLATION INSTRUCTIONS



NOTE:
1. USE TEFLON TAPE ON ALL THREADED CONNECTIONS
2. FLUSH LINE BEFORE FAUCET INSTALLATION TO REMOVE DEBRIS IN LINES.
3. NO PLUMBER'S PUTTY ON ANY FINISH TO CORRODE FINISH OF FAUCET SURFACE.



LEGAL DISCLAIMER : Do not connect supply lines to any vibration devise(refrigerator, washing machine, etc)or any un-secured plumbing fixture to cause breakage, leakage and damage.



This General diagram and installation instructions are not intended for any specific model, but is presented as a general guideline for Installations!