

UNDER COUNTER SINK

Oval undercounter mount sink
Made from vitreous China
Front overflow

- ☐ Unglazed Rim
431x368 mm
(17"x14 1/2")
- ☐ Glazed underside

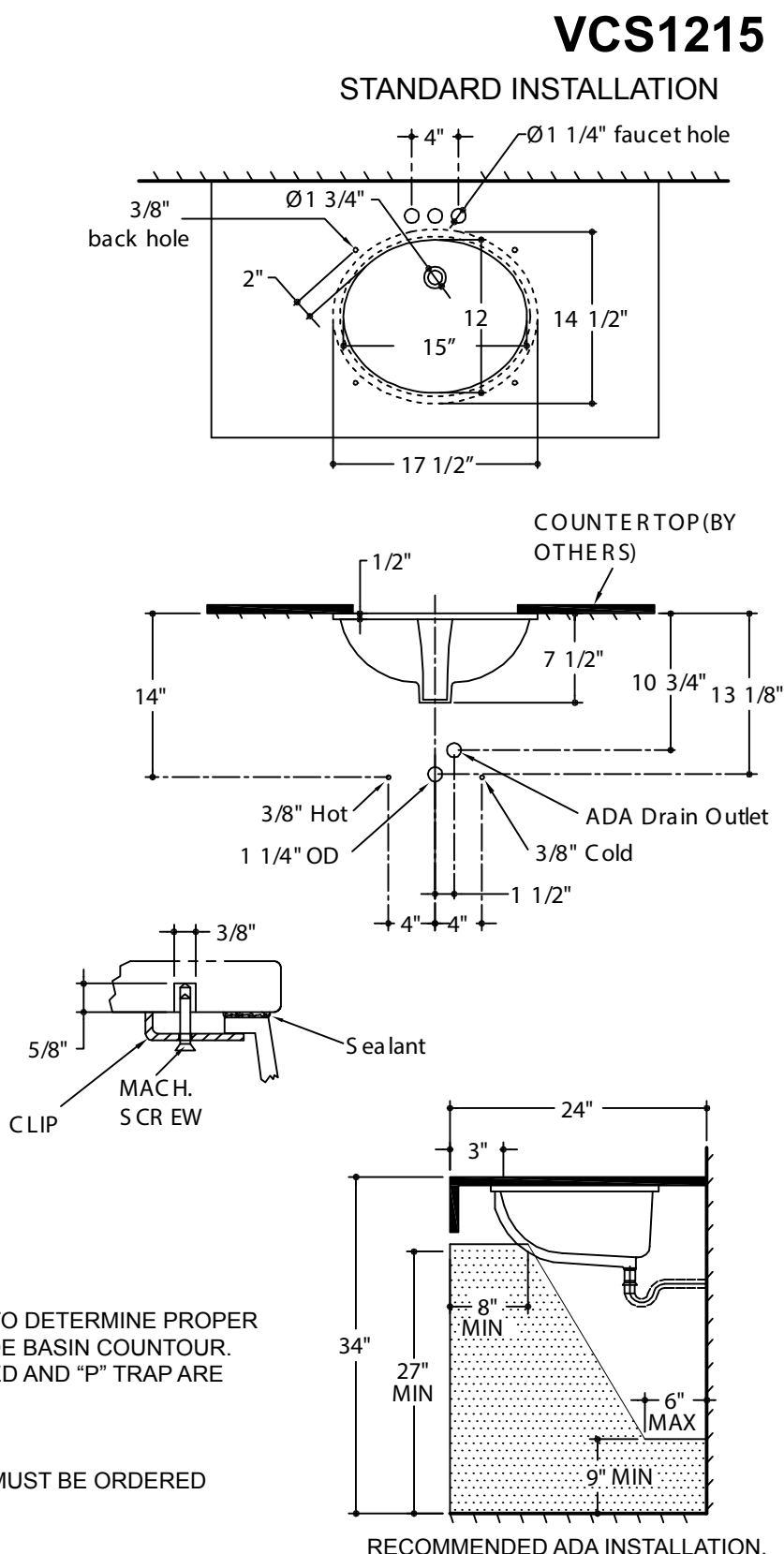
Bowl size:

381mm (15") wide

304 mm (12") front to back

193 mm (7-1/2") deep

Compliance Certifications-
Meets or Exceeds the
Following Specifications:
ASME A 112.19.2
CSA B45 series



Notes:

WE RECOMMENDE USING BASIN AS A TEMPLATE TO DETERMINE PROPER CONTOUR. CUT COUNTERTOP 38 MM (1-1/2") INSIDE BASIN COUNTOUR.
*DIMENSIONS SHOWN FOR LOCATION OF SUPPLIED AND "P" TRAP ARE SUGGESTED.

- ▼ UNDER COUNTER MOUNTING KIT OPTIONAL
FITTINGS NOT INCLUDED WITH FIXTURE AND MUST BE ORDERED SEPARATELY.
SEALING COMPOUNDS SUPPLIED BY OTHERS