



GABRIELLA

B-100
BATHROOM FAUCET

BEFORE YOU BEGIN YOUR INSTALLATION



Shut off
water supply



Flush hot and cold
water supply lines



Required tools



Installation by License
Professional Plumber



Flush the water pipe
before installation



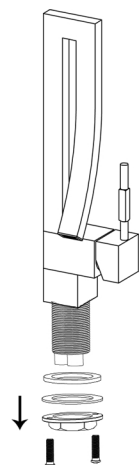
Drawings are for
reference only



Do not disassemble
the body

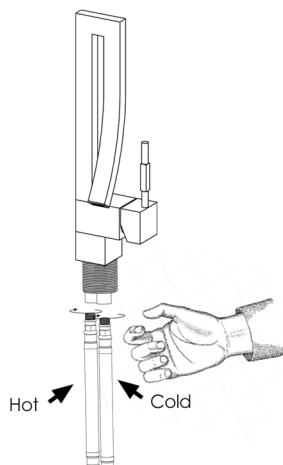
FAUCET INSTALLATION

1



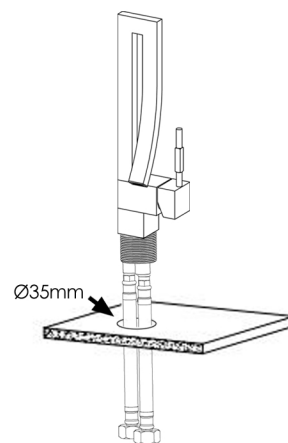
Remove the washer and mounting nut.

2



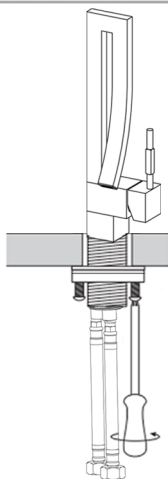
Install hot and cold water
hoses to the faucet.

3



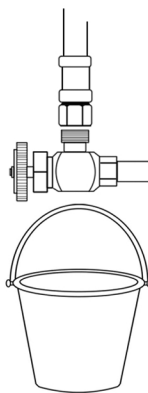
Ensure there is a Ø35mm through-hole
on the counter. Position and insert
faucet into faucet countertop hole.

4



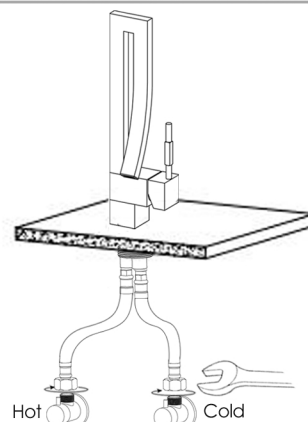
Tighten the mounting nut with the screws until
faucet is firmly secure.

5



Before connecting supply hose,
flush supply valves to clear any
debris. Place a bucket underneath
valves and run water for 5 to 10
seconds. Turn water off.

6



Connect hot and cold water lines
to the inlet pipe and tighten with
a wrench until snug.
Do not over tight.

CARE AND CLEANING

Clean the faucet frequently using mild soap or an on-abrasive cleaner and then quickly rinse with water and dry with soft cloth only.

Using abrasive cleaners, solvents, acid cleaners or any scrubbing detergent, polisher or scraper will damage the finish and void the warranty.

WARRANTY

For additional technical assistance or for any questions or concerns about your faucet's warranty, please contact us.

www.stylishkb.com

care@stylishkb.com

www.stylishkb.com/warranty

+1-855-789-5352

Stylish International Inc Follow us on Instagram! Check out and let us know your comments [stylish.international.inc](https://www.instagram.com/stylish.international.inc)

Products and specifications shown are subject to change without notice. Please contact our technical support at care@stylishkb.com for any further queries, replacement parts requests, etc. ©2019 Stylish® all right reserved.