

# SATURN

## 1904SS-LED

### MEDIUM WALL MOUNT LANTERN

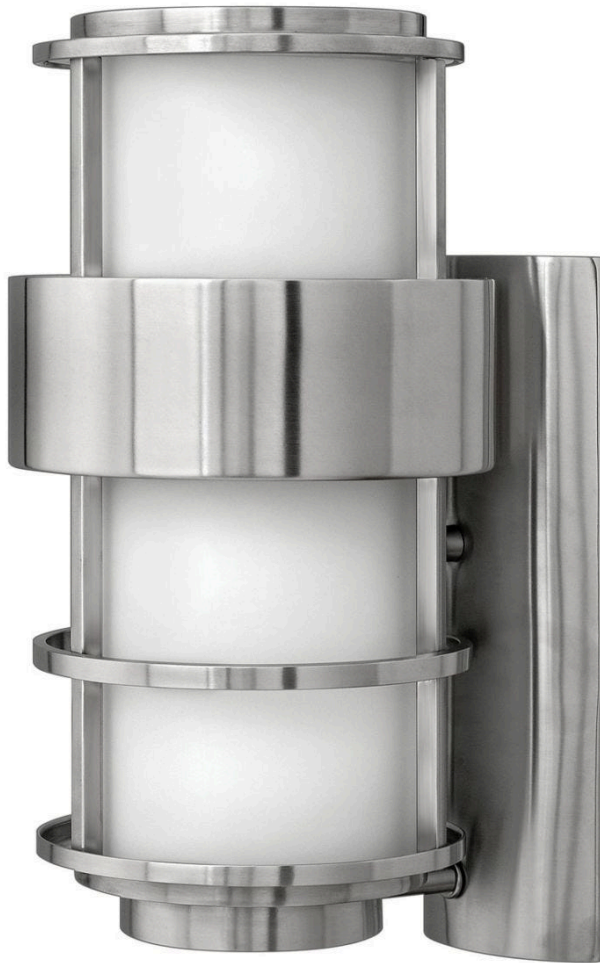
Saturn is a stunning, modern design offering robust construction and intersecting lines that create a striking contrast against the clear seeded glass.

DETAILS	
FINISH:	Stainless Steel
MATERIAL:	Stainless Steel
GLASS:	Etched Opal

DIMENSIONS	
WIDTH:	8"
HEIGHT:	16"
WEIGHT:	6.5lb
BACK PLATE:	4.75"W X 14"H
EXTENSION:	9.5"
TOP TO OUTLET:	9"

LIGHT SOURCE	
LIGHT SOURCE:	Integrated LED
LED NAME:	(2) EL2G16W7WI
WATTAGE:	32w LED *Included
VOLTAGE:	120v
COLOR TEMP:	3000
LUMENS:	2800
CRI:	95
INCANDESCENT EQUIVALENCY:	2 x 100w
DIMMABLE:	Yes - CL Type Dimmer (SSL7A)

SHIPPING	
CARTON LENGTH:	12
CARTON WIDTH:	10.5
CARTON HEIGHT:	18.8
CARTON WEIGHT:	8.5



#### PRODUCT DETAILS:

- Suitable for use in wet (outdoor direct rain or sprinkler) locations as defined by NEC and CEC. Meets United States UL Underwriters Laboratories & CSA Canadian Standards Association Product Safety Standards
- Meets California Energy Commission 2013 & 2016 Title regulations/JA8
- 2 year finish warranty
- LED components carry a 5-year limited warranty
- Bold lines and a clean, minimalist style complement contemporary architecture
- Superior strength and performance

# HINKLEY

HINKLEY  
33000 Pin Oak Parkway  
Avon Lake, OH 44012

PHONE: (440) 653-5500  
Toll Free: 1 (800) 446-5539

[hinkley.com](http://hinkley.com)