

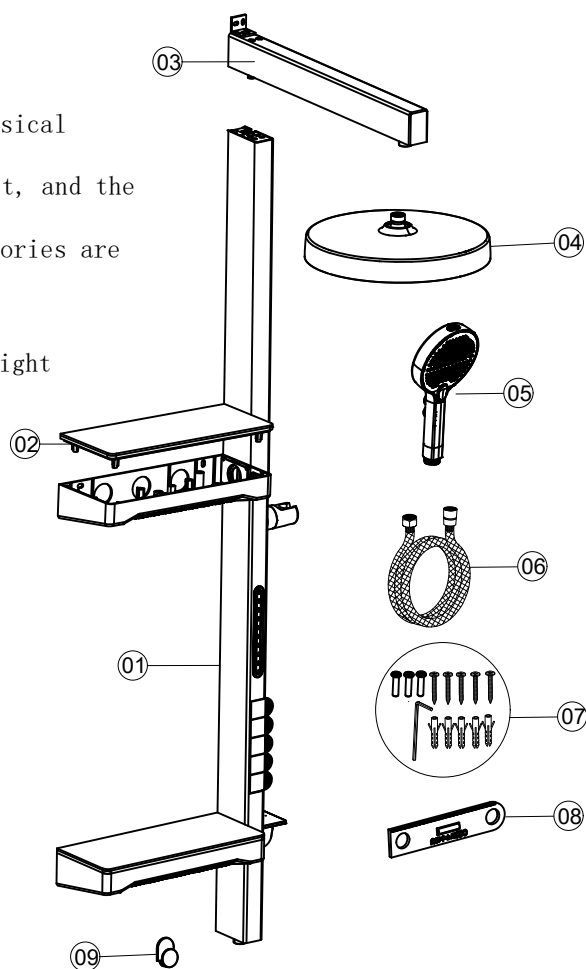
Product introduce

(I) Instructions:

1. After you open the product package, please check the physical objects and the corresponding illustrated accessories;
2. The product shape shall be subject to the physical object, and the schematic diagram is for reference only;
3. Under the condition of not affecting the use, the accessories are subject to change without prior notice;
4. Thank you for choosing our products.

(II) The product list is as follows: Please refer to the right picture

09	hook up	1	ABS	included with the product
08	gradienter	1	ABS	included with the product
07	accessories bag	1	SUS	included with the product
06	1.5m flexible hose	1	SUS	Customer selection
05	handheld shower	1	ABS	Customer selection
04	showerhead	1	ABS	Customer selection
03	shower slide component	1	Al + Cu	
02	glass cover	1	glass	
01	faucet body	1	Al + Cu	
No.	Name	quantity	material	Mark



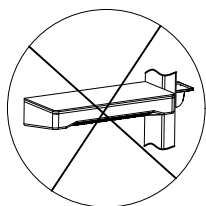
installation matters

(I) Important note

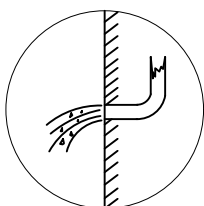
- 1.1 Dynamic pressure: Under 0.1 ± 0.01 Mpa water pressure, basin, washing and kitchen water nozzle (with accessories), flow ≤ 0.15 L/S
- 1.2 Dynamic pressure : $0.3 + 0.02$ Mpa water pressure, bath ≥ 0.33 L/S; Basin, bidet, sink, shower > 0.20 L/S
2. Water inlet temperature the recommended temperature is 4° to 80°

(II) Cautions

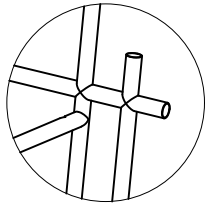
- 1.The faucet heart of the main group, factory has been tested and debugged, please do not disassemble by yourself.
- 2.Before installing the faucet, be sure to remove impurities and sludge from the embedded pipe.
- 3.After installation, please check whether the connections are tightly connected and whether the pipes leak.
- 4.The left side of the pipe installation is hot water, and the right side is cold water. Do not reverse the installation.



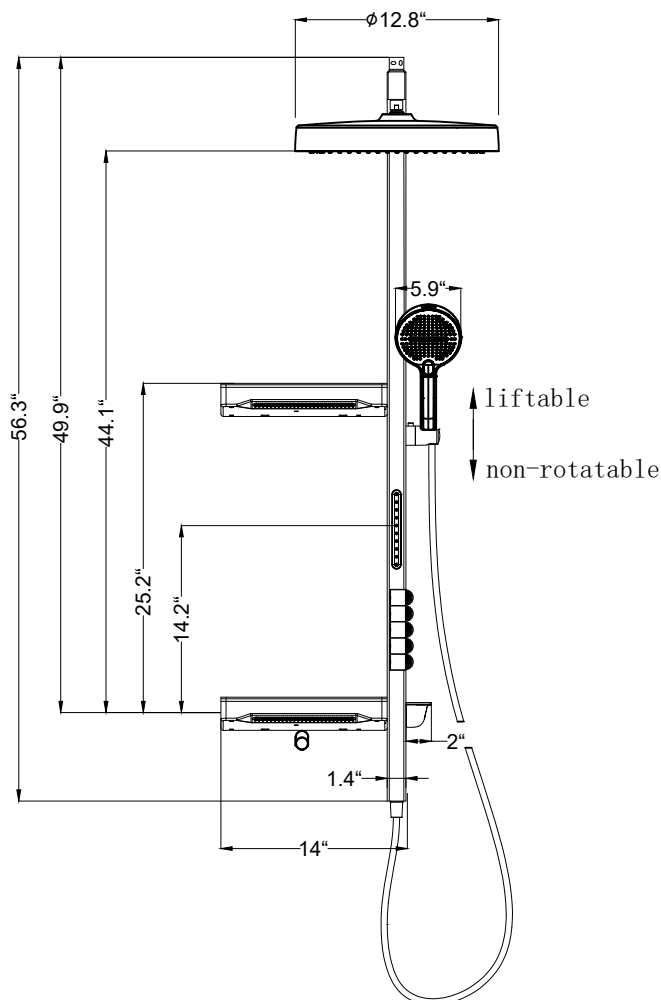
Do not disassemble



flushing pipes

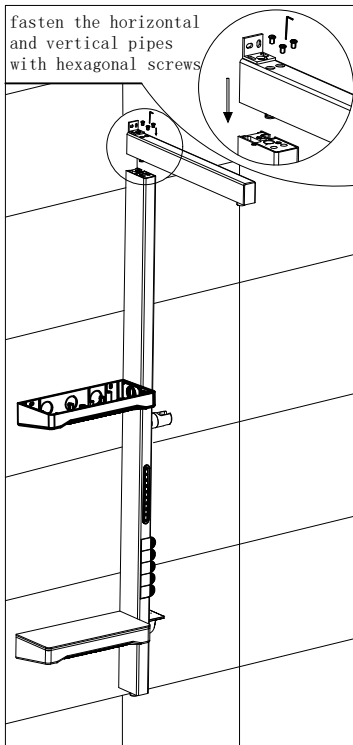


Pipe inspection



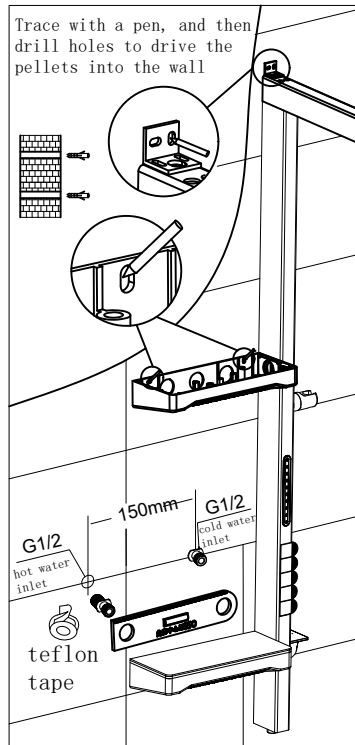
Installation procedure

①



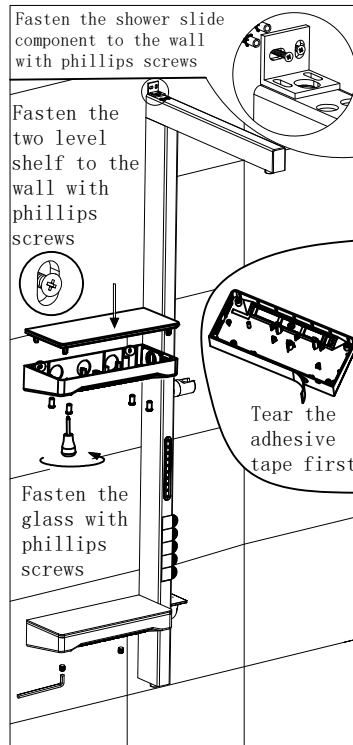
1.1. Connect the shower cross pipe to the main body

②



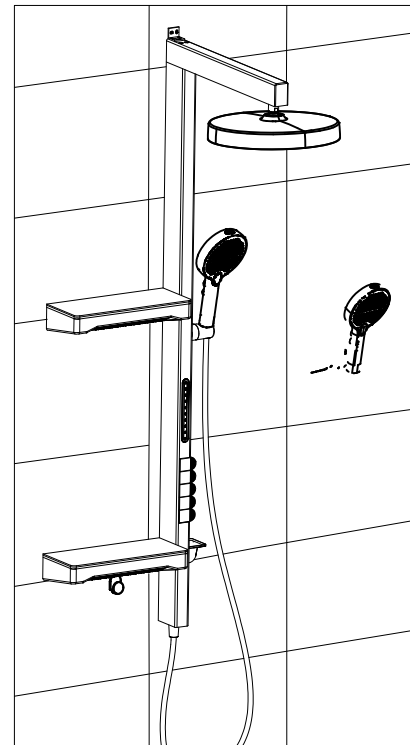
2. Screw the teflon tape on the S-unions and install it on the wall. Measure with a level to ensure that the S-unions remains level
Note: This step does not tear the adhesive tape

③

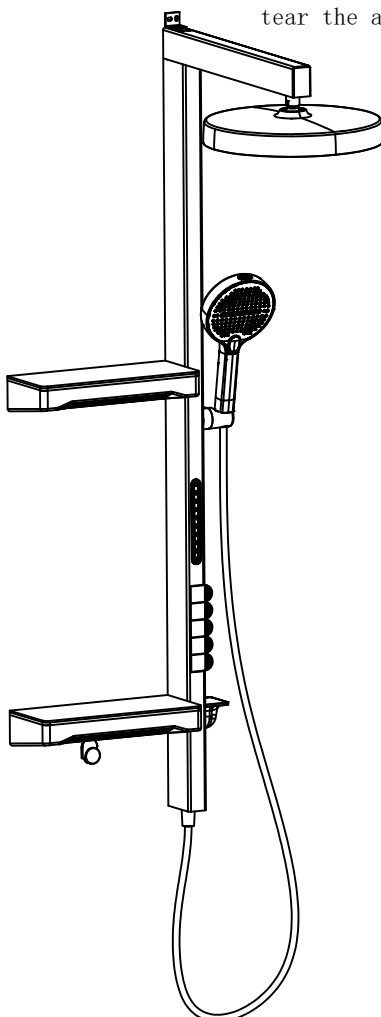


3. Tear the adhesive tape behind the main body and the tube, and then lock the screw

④



4. Install the showerhead and hand held shower. The hook is glued to the bottom position



test

1. Turn off the faucet, open the inlet valve, and check whether there is leakage at each connection;
2. Turn on the faucet, open the inlet valve, convert the diverter to check whether there is leakage;
3. When using, do not force the hose, so as not to crack the hose

maintenance and care

(I)Protect faucet surface

1. Often clean with water, colorless glass cleaner, no abrasive effect, wipe the faucet with soft cotton cloth.
2. Do not use acid detergents, which can erode the surface coating
3. Do not use detergents containing coarse particles such as detergent powder, so as not to wear the product

(II)Clean faucets regularly

1. Under normal water pressure, when the water yield is reduced, please use a small brush to clean the water inlet and outlet parts after soaking in vinegar as shown in the figure

