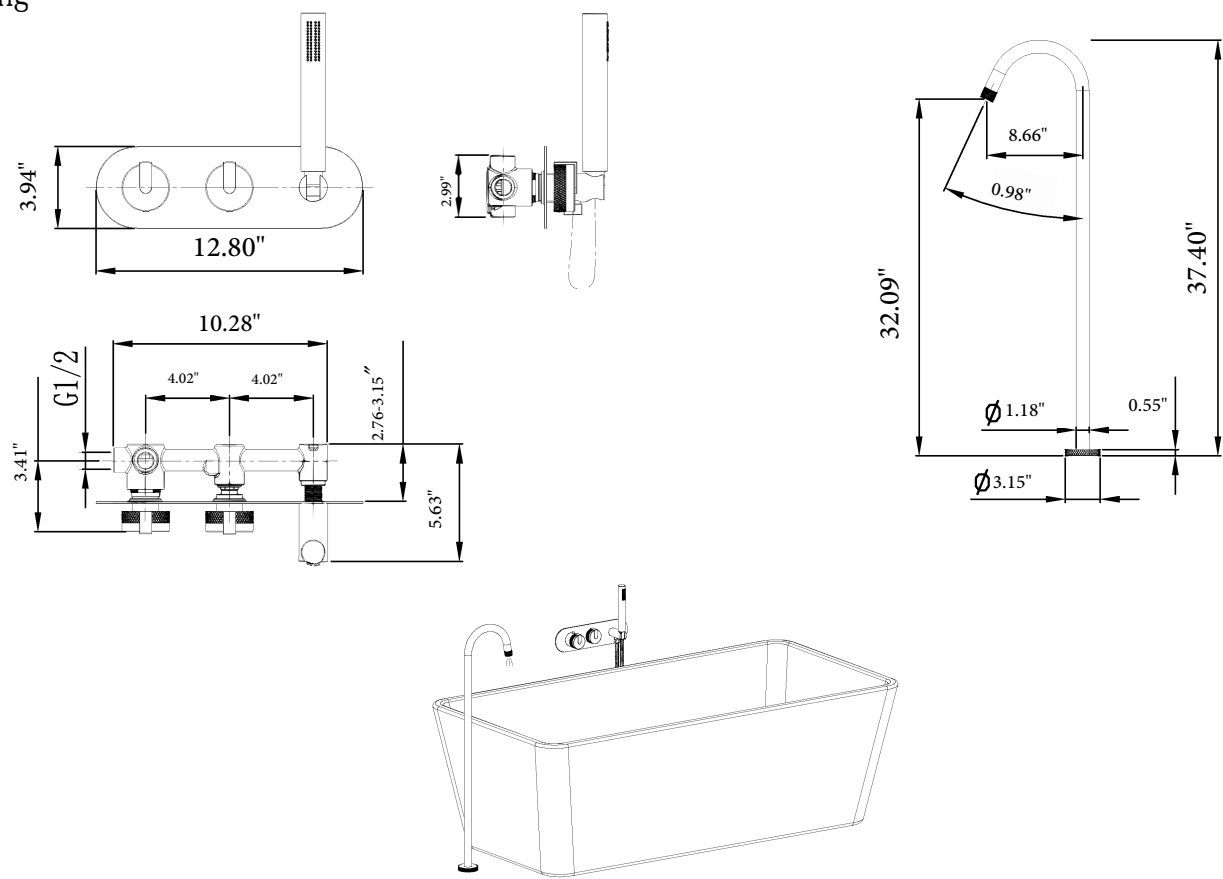
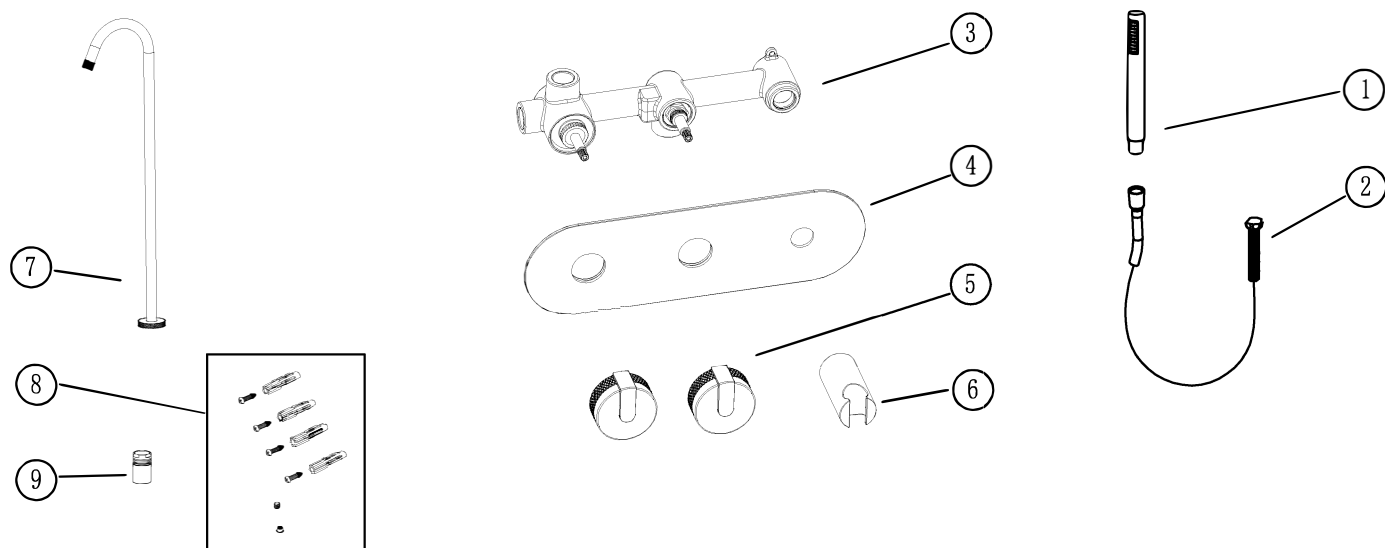


Installation manual

Drawing



Package contents



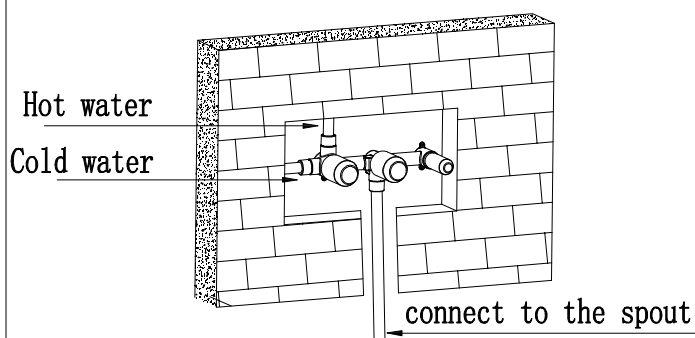
		5	Handle
9	Spout connector	4	Cover for mixer
8	screw	3	Mixer
7	Spout	2	Shower hose
6	Shower holder	1	Hand shower

1, Cut hole at mininum size of 360*200MM in the wall, the width will be 70 to 80mm from the tile surface.

2, Put the mixer into the hole, connect hot water and cold water as below instruction

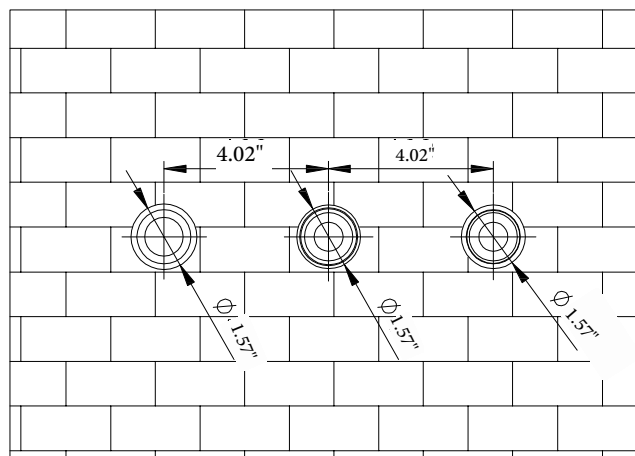
3, After completing installation of the mixer, turn on the water supply valves and allow both hot and cold water to

run at least one minute each. While water is running, check for leaks, especially the connections at the supply lines. Tightening nuts slightly will stop any minor leaks.

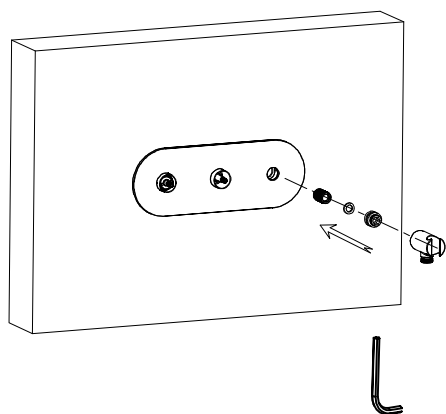


2, Drill the hole on the tile as per below instruction.

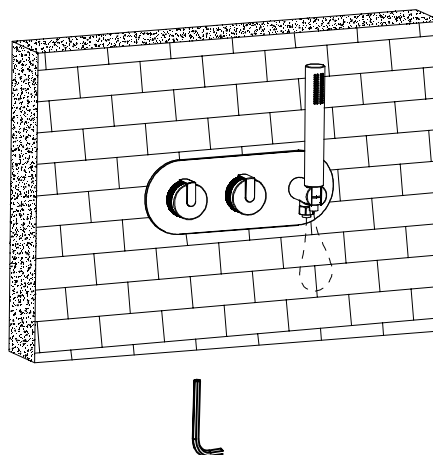
Then close the hole in the wall and attach the ready tile.



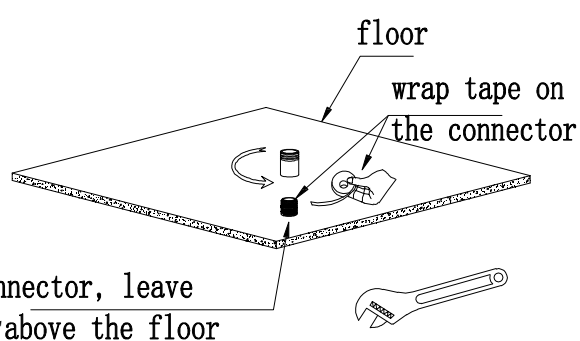
3, Take off the protective cover. Connect the panel cover, shower holder as below shown.



4, Connect the hand shower and shower hose. Attac the two handles by Allen key



5, Start install the flooring type spout



6, Install the spout to the connector by securing the screws as the illustration

