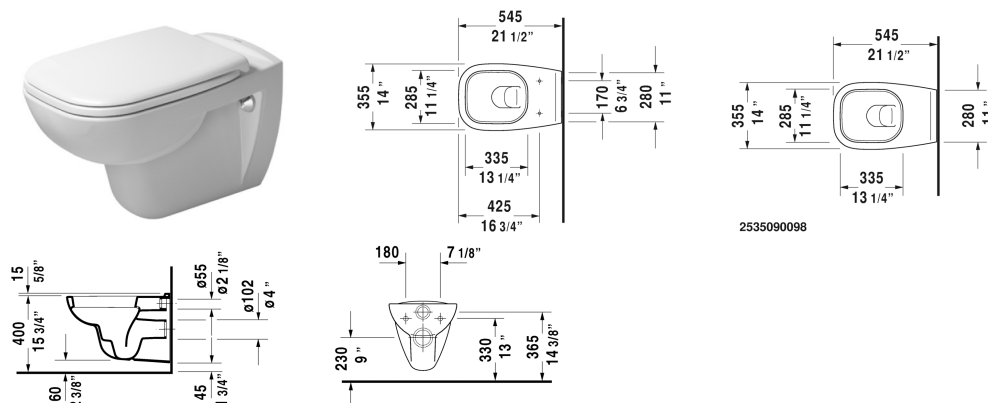


D-Code Toilet wall-mounted # 253509..922

| < 14" Inch > |



| Toilet wall-mounted | Dimension | Weight | Order number |
|--|-----------------------|---------|--------------|
| washdown model, cUPC listed | | | |
| Colors | | | |
| 00 White 20 HygieneGlaze (an antibacterial ceramic glaze that provides almost indefinite effectiveness) | | | |
| Variant | | | |
| 1.6/0.8 gpf | 14" x 21 1/2" Inch | 44.1 lb | 253509..922 |
| Infobox | | | |
| In-wall tank & carrier and actuator plate required for installation / Refer to page XXX, If pre-wall carrier is not used, hardware # 006500 is recommended | | | |
| Hardware for wall-mounted bidet and wall-mounted toilet | Ø 1/2" x 7 1/8" Inch | 0.4 lb | 006500 |
| Noise reduction gasket for wall-mounted toilet | | 0.7 lb | 005020 |
| Geberit in-wall tank and carrier width 19 3/4", depth 5 1/2" height (adjustable) 43" - 47" | 19 3/4" x 5 1/2" Inch | 38 lb | 111335 |
| Sigma 01 flush plate, dual flush White | 9 5/8" x 6 1/2" Inch | | 115770 |
| Suitable products | | | |
| Toilet seat and cover hinges plastic, with slow close, | | | 006739 |
| Toilet seat and cover hinges stainless steel, without slow close, | | | 006731 |

All drawings contain the necessary measurements which are subject to standard tolerances. They are stated in inch & mm and are non-binding. Exact measurements, in particular for customized installation scenarios, can only be taken from the finished ceramic piece.