

FRONT VIEW

SIDE VIEW

NOTE:
SEE REVERSE FOR PRODUCT
SPECIFICATIONS.

**KENROY
HOME**

3723 Regent Boulevard
JACKSONVILLE, FL. 32224
PHONE: 904-642-4340
FAX: 904-642-4150

THIS DOCUMENT AND THE INFORMATION THAT IT DISCLOSES IS THE EXCLUSIVE
PROPERTY OF KENROY HOME. ANY REPRODUCTION OR USE OF THIS
DRAWING IN PART OR IN WHOLE, WITHOUT THE EXPRESS CONSENT OF THE
PROPRIETOR IS PROHIBITED. © 2000 KENROY HOME.

DATE: 03/17/00

SCALE: NONE

DRAWN BY: TVL

REFERENCE:

3 LT. MEDIUM ESTATE

APPROVAL:
03/00

REVISION DATE:
1/4/10 add notes

REVISION DATE:
1/3/2013 change UPC

REVISION DATE:
5/10/2013 add package drawing

REVISION DATE:
11/8/2013 change to CETL

MODEL #:

16313

FINISH:

AP

PAGE:

1 OF 2

PRODUCT SPECIFICATIONS

OVERALL ASSEMBLED DIMENSIONS

HEIGHT— 69.9 CM (27 1/2") WIDTH— 23.5 CM (9 1/4") EXTENSION— 28.6 CM (11 1/4")

- 3 LIGHTS:** CANDELABRA BASE E-12 PHENOLIC SOCKETS. PAINTED ALUMINUM SOCKET COVER IS PROVIDED AND (1) IS 6.4 CM (2 1/2") HIGH AND (2) ARE 5.4 CM (2 1/8") HIGH.

- CAGE:** PAINTED CAST ALUMINUM, 6 SIDED, 23.5 CM (9 1/4") WIDE TOP (POINT-TO-POINT), 20.3 CM (8") WIDE (FLAT-TO-FLAT). 17.1 CM (6 3/4") WIDE BOTTOM (POINT-TO-POINT), 14.6 CM (5 3/4") WIDE (FLAT-TO-FLAT) AND 24 CM (9 1/2") HIGH. ATTACHED TO BACK PLATE WITH (4) 1.3 CM (1/2") DIA. TUBES.

- TOP COVER:** PAINTED CAST ALUMINUM, 6 SIDED, 20.3 CM (8") WIDE (POINT-TO-POINT), 17.8 CM (7") WIDE (FLAT-TO-FLAT) BY 9.5 CM (3 3/4") HIGH.

- BOTTOM COVER:** PAINTED CAST ALUMINUM, 6 SIDED, 15.2 CM (6") WIDE (POINT-TO-POINT), 13.3 CM (5 1/4") WIDE (FLAT-TO-FLAT) BY 4.4 CM (1 3/4") HIGH.

- SUPPLY WIRE:** MUST EXTEND A MINIMUM OF 15.2 CM (6") FROM THE MOUNTING POINT. A GROUND WIRE IS PROVIDED AND EXTENDS THE SAME LENGTH AS THE SUPPLY WIRES. WIRES MUST BE LEAD FREE.

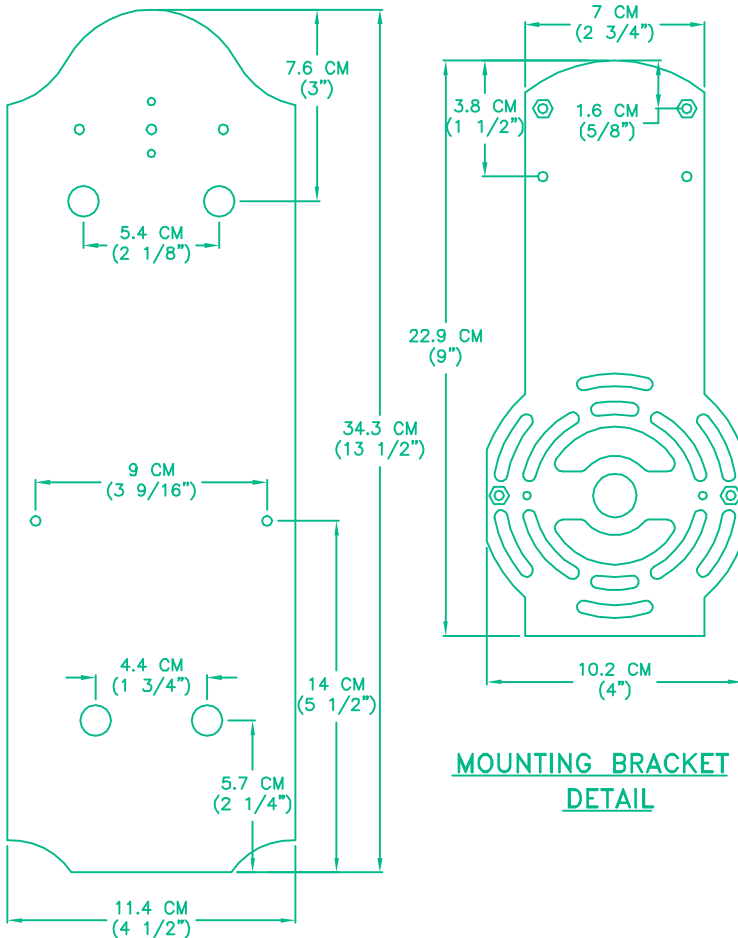
- LABELS:** CETL, MANUFACTURING DATE, MODEL # AND COUNTRY OF ORIGIN LABELS PROVIDED IN CANOPY. RELAMPING LABEL FOR 60 WATTS PROVIDED ON ONE CANDLE.

PACKAGING AND SHIPPING DETAILS

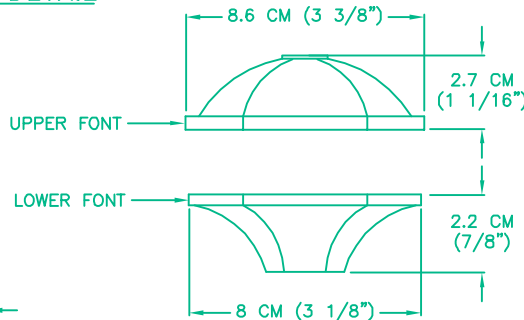
- THE FIXTURE IS DISASSEMBLED FOR SHIPPING. EACH PART IS WRAPPED IN A PLASTIC BAG AND PACKED IN ITS OWN CARDBOARD CARTON.
- HARDWARE PACKS #3 AND 7 ARE PROVIDED. MOUNTING BRACKET PROVIDED AS SHOWN WITH (4) SCREWS, (4) NUTS AND (4) CAP NUTS. ALL PARTS SHOULD BE SECURED SO THEY CAN NOT MOVE DURING SHIPPING.
- ENTIRE LANTERN IS WRAPPED IN PLASTIC WITH A SMALL BAG OF SILICA GEL PLACED INSIDE.
- THE CARTON IS MADE OF A DOUBLE WALL CORRUGATED CARDBOARD "A MA A". THE INNER PACKING IS DIE-CUT CARDBOARD OR STYROFOAM SUFFICIENT FEDEX AND ISTA-3A DROP TEST REQUIREMENTS. EXTERIOR SURFACE IS BROWN KRAFT.
- EACH CARTON SHALL BE PRINTED WITH A LINE DRAWING AND THE KENROY HOME NAME AND LOGO, MODEL NUMBER AND FINISH, EACH CARTON SHALL BE PROVIDED A UPC LABEL. THE UPC BAR CODE AS FOLLOWS: AP=053392081478.

OTHER DETAILS

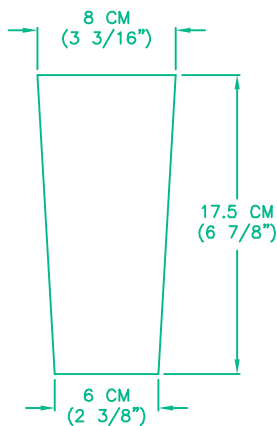
- MODEL 16313AP INSTALLATION INSTRUCTIONS ARE TO BE PACKED WITH FIXTURE.
- ASSEMBLY TIME: 15 MINUTES.
- DIMS OF BOX: 31.5 CM (12-7/16") LENGTH x 26 CM (10-1/4") WIDTH x 49.5 CM (19-1/2") HEIGHT. (CUFT.: 1.4")
- NET WEIGHT: 8.4 LBS. GROSS WEIGHT: 11.3 LBS.
- THIS ITEM MUST BE UL APPROVED FOR WET LOCATION, THE CETL NUMBER IS 4007242.



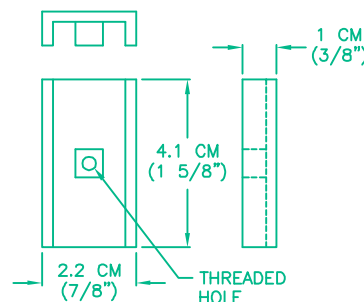
BACKPLATE DETAIL



FONTS DETAIL



GLASS DETAIL
PANEL IS 3 MM THICK



SCROLL COVER
MATERIAL IS 3 MM THICK