

ASSEMBLY INSTRUCTIONS

(For LD1031A-52)

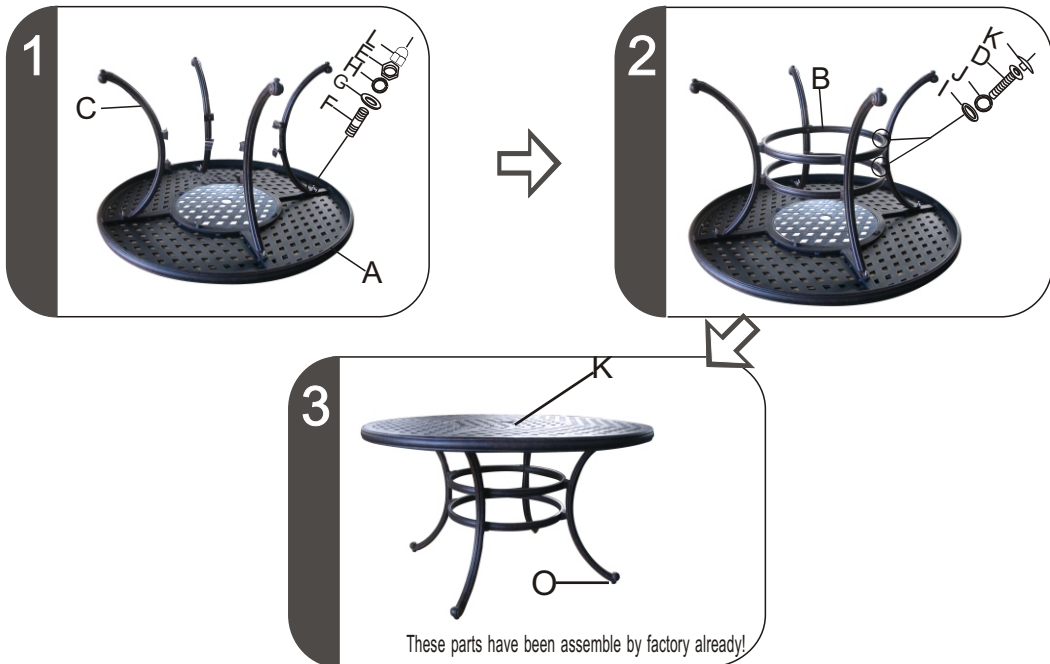
ATTENTION:

1. Please read these instructions carefully before assembly.
2. Aluminum is soft metal over tighten may strip threads or break the part.
3. DO NOT use power tools.
4. Check parts against the parts list to make sure you have all parts needed for proper assembly.
5. Familiarize yourself with the inventory of parts and the accompanying illustrations to ensure safe and proper assembly.

Assembly steps:

1. Turn the table top(A) upside down on the soft clean surface. Loosely attach the legs(C) to the table top(A) with bolts(F), big flat washers(G), lock washers(H) nuts(E)and nut caps(L)using the wrench(N). Tighten the bolts at this time.
2. Loosely attach the center ring(B) to the legs(C). Note that the recessed end of plate goes on the leg last at each corner. Secure using small flat washers(I), small lock washers(J), screws(D) and PVC covers(K) using the wrench(M).
3. Tighten all the bolts and nuts completely. DO NOT over tighten the nuts and bolts.
4. Turn the table onto its legs and put center tray on the table top. Use the adjuster feet to level the tables.

Warning : DO NOT use acid or alkaline washing liquid to clean the product.



Parts list	Parts picture	Description	Qty	Parts list	Parts picture	Description	Qty
A		Table top	1	D		Screw	8
B		Center ring	2	E		Nut	4
C		Table leg	4	F		Bolt	4
O		Foot leveler	4	G		Big flat washer	4
K		Umbrella cover	1	H		Big lock washer	4
				I		Small flat washer	8
				J		Small lock washer	8
				K		PVC cover	8
				L		Nut cap	4
				M		Wrench	1
				N		Wrench	1

Made in China

*** DO NOT OVER TIGHTEN**

*** NO POWER TOOLS**

*** NO SOCKET DRIVERS**

