



### MAINTENANCE AND CARE INSTRUCTIONS

Olympia products are designed and engineered under strict quality standards. Regular and proper care of our products will ensure years of trouble free service. To clean, simply wipe with a damp, soft cloth. Do not use abrasive or harsh cleaners as they may result in finish damage. Regularly remove and clean minor debris from the aerator.

### OLYMPIA FAUCETS, INC. LIMITED LIFETIME WARRANTY \*

Olympia Faucets, Inc. warrants its products to the original consumer purchaser to be free from defects in material and workmanship as long as the consumer purchaser owns it. Dated proof of purchase must accompany all warranty claims. PVD finishes carry a lifetime warranty in residential service.

Olympia Faucets, Inc. will replace, free of charge, to the original consumer purchaser, any and all parts that prove defective under normal installation, use, and service. Damage as a result of misuse, abuse, accident, or improper installation, will consequentially void this warranty. Replacement parts can be obtained from your local dealer or directly from Olympia Faucets. Olympia Faucets, Inc. recommends using a certified plumber for all faucet installation and repair.

This warranty is limited to replacement of defective parts only. Incidental and consequential damages, labor charges, repair, or replacement costs are expressly excluded. Some states do not allow the exclusion or limitation of incidental or consequential damages, so the above limitation may not apply to you. This warranty gives you specific legal rights, as you may have other rights of which vary from state to state.

Installation or maintenance and cleaning must be in compliance with instructions furnished with every Olympia product. If you find a problem with your product, please immediately contact your nearest Olympia Faucets, Inc. dealer or sales representative.

\* 2 year limited warranty on commercial and multi-family projects.



## INSTALLATION AND MAINTENANCE INSTRUCTIONS FOR OLYMPIA SINGLE HANDLE DIVERTER SETS

### PRODUCT NUMBERS

**#P-2240** Lever Handle

**#P-2250** Lever Handle

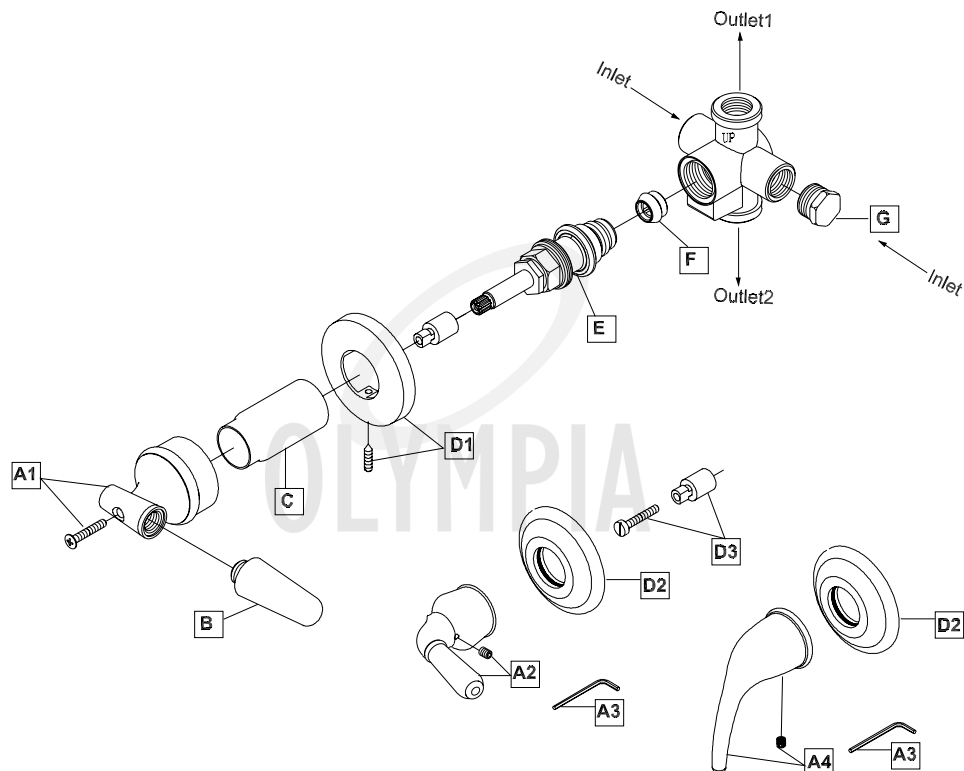
**#P-2260** Lever Handle

ADA





Thank you for purchasing this quality product. Olympia products are rigorously tested to provide long service under normal conditions. Prior to installation, familiarize yourself with this parts diagram. Make sure that you have all of the illustrated parts for your Olympia product before installation.



	ITEM #	DESCRIPTION
A1	OP-160001	Handle Hub (For P-2250)
A2	OP-140009	Lever Handle(For P-2240)
A3	OP-490011	3/32" Allen Wrench (For P-2240)
A4	OP-160002	Lever Handle(For P-2260)
B	OP-490017	Chrome Insert (For P-2250)
C	OP-460005	Sleeve
D1	OP-460004	Flange (For P-2250)
D2	OP-460002	Flange(For P-2240, P-2260)
D3	OP-460001	Handle Adapter (For P-2240)
E	OP-360001	Diverter Stem
F	OP-440014	Brass Seat
G	OP-440020	Valve Plug

## INSTALLATION INSTRUCTIONS

### Tools you will need:

- Plumbers Putty
- Teflon Tape
- Screwdriver
- Plumber Sealant

### VALVE INSTALLATION:

1. Position valve 2" to 3½" deep from center of valve to finish wall
2. Align valve with inlet and outlet ports to desired positions.
3. Rough in valve, applying pipe sealant or teflon tape to pipe when threading into any port of diverter valve. Caution:-This is not control valve or mixing valve. It is only transfer or diverter valve which can divert mixed water from outlet1 to outlet2.

### DIVERTER TRIM INSTALLATION:

1. Slide chrome flange (D1-2) to finish wall and tighten set screw (For P-2250).  
WARNING: DO NOT OVER-TIGHTEN SET SCREW.
2. Apply caulk around outside edge of flange.
3. Align splines on the handle adapter to alignment that will allow handle to be positioned in vertical mode if provided.
4. Place handle (A1, A2, A4) on adapter and tighten screw.



For more care information or trouble shooting inquiries about your Olympia product, please call:  
**OLYMPIA FAUCETS, INC.** (888) 772-7701  
Central Standard Time: 8:00am ~ 7:00pm  
[www.olympiafaucets.com](http://www.olympiafaucets.com)